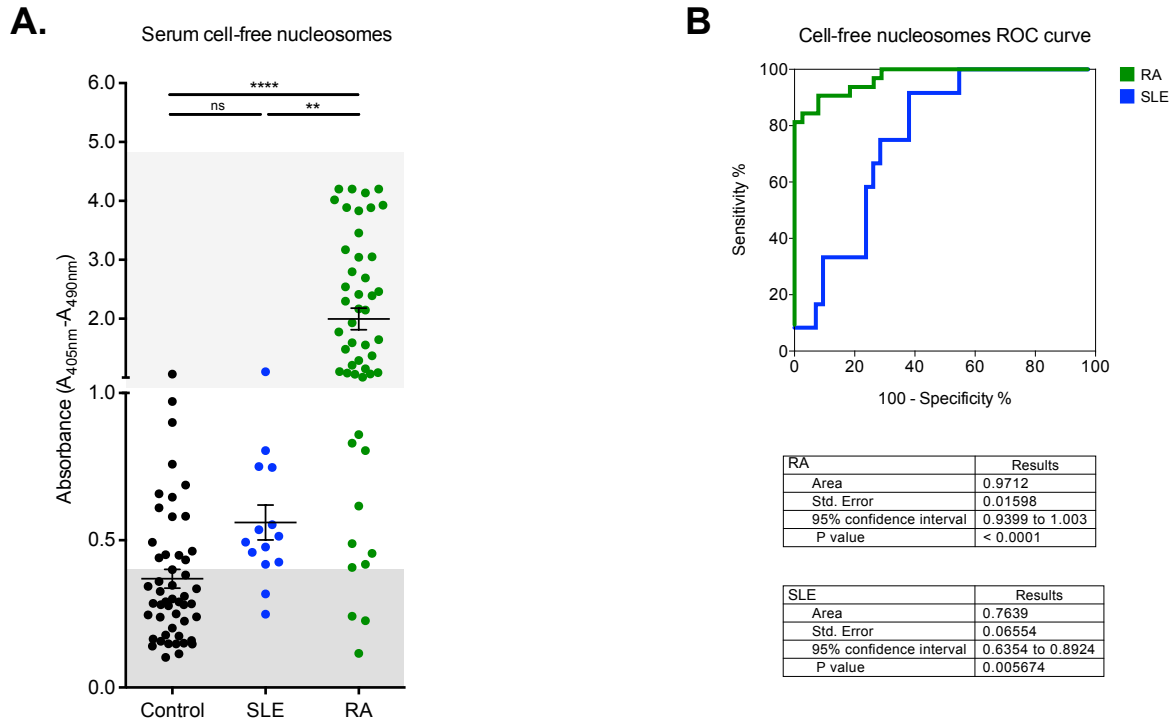


### Additional Figure 3



**Additional Figure 3.** Elevated serum levels of NETs components, in RA patients have potential clinical utility. **(A)** Cell-free nucleosome levels in plasma and serum from healthy matched blood donors (n=50), patients with SLE (n=14) and patients with RA (n=39) determined by ELISA. **(B)** ROC analysis of cell-free nucleosomes in serum of patients with RA, patients with SLE and healthy controls. \*\*P < 0.01, \*\*\*\*P < 0.0001, n.s.: statistically not significant, Mann-Whitney U test; PMN: polymorphonuclear leukocytes; PBMC: peripheral blood mononuclear cells.