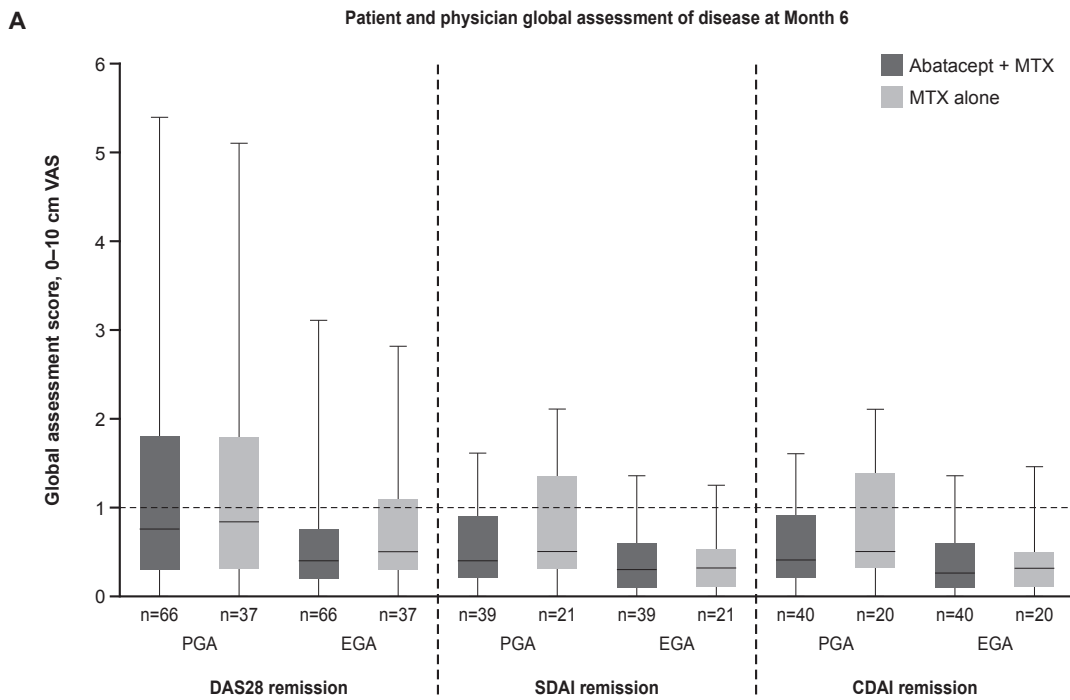
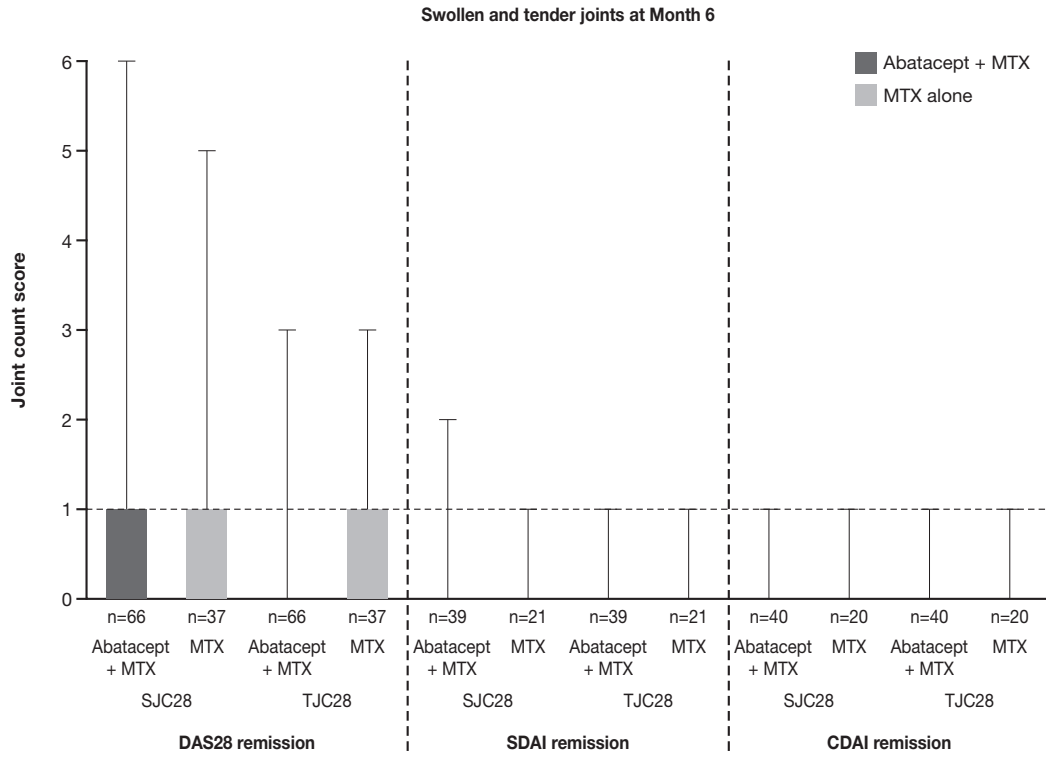


Supplementary Figure 3 Core set variables for patients in remission.

Data are based on patients with data available at baseline, Month 6 and Month 12. Data presented are min, Q1, median, Q3 and max values from bottom to top of the box plot, respectively. Dotted line indicates ACR-EULAR Boolean remission criteria cut-off of ≤ 1 for SJC, TJC, PGA and CRP (mg/dL). ACR = American College of Rheumatology; DAS28 remission = DAS28 (CRP) < 2.6 ; SDAI remission = SDAI ≤ 3.3 ; CDAI remission = ≤ 2.8 . CDAI = Clinical Disease Activity Index; CRP = C-reactive protein; DAS28 = disease activity score using 28 joint counts; EGA = evaluator's global assessment; EULAR = European League Against Rheumatism; MTX = methotrexate; PGA = patient global assessment; SDAI = Simplified Disease Activity Index; SJC = swollen joint count; TJC = tender joint count; VAS = visual analog scale.



B**C**