

Additional file 2

**Bovine cartilage co-cultured with synovium and fibrous joint capsule increases aggrecanase and matrix metalloproteinase activity**

Per Swärd, Yang Wang, Maria Hansson, L Stefan Lohmander, Alan J. Grodzinsky, André Struglics

Fig. S2

(A) FFGV

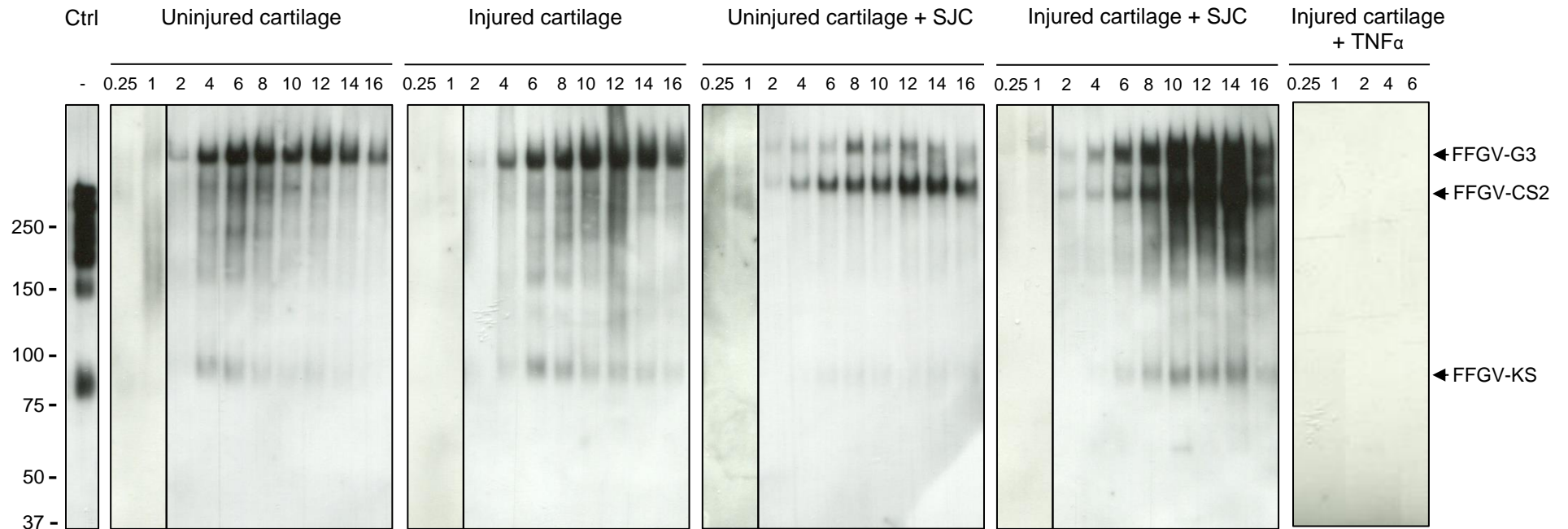


Fig. S2

(B) ARGS

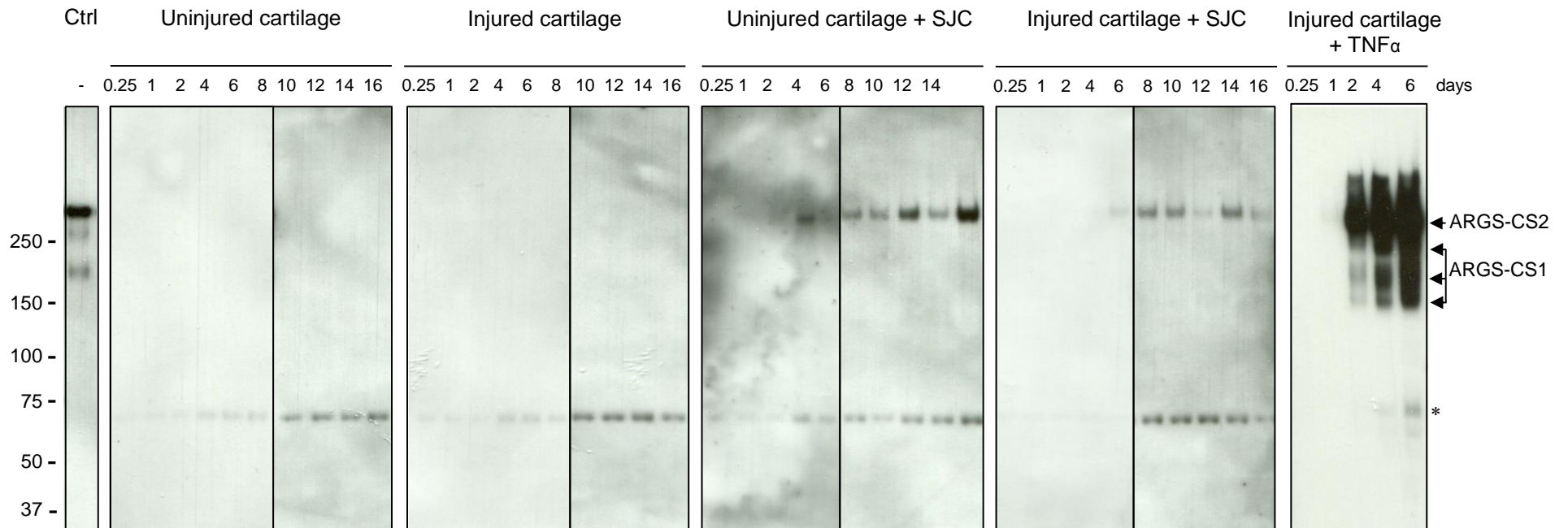
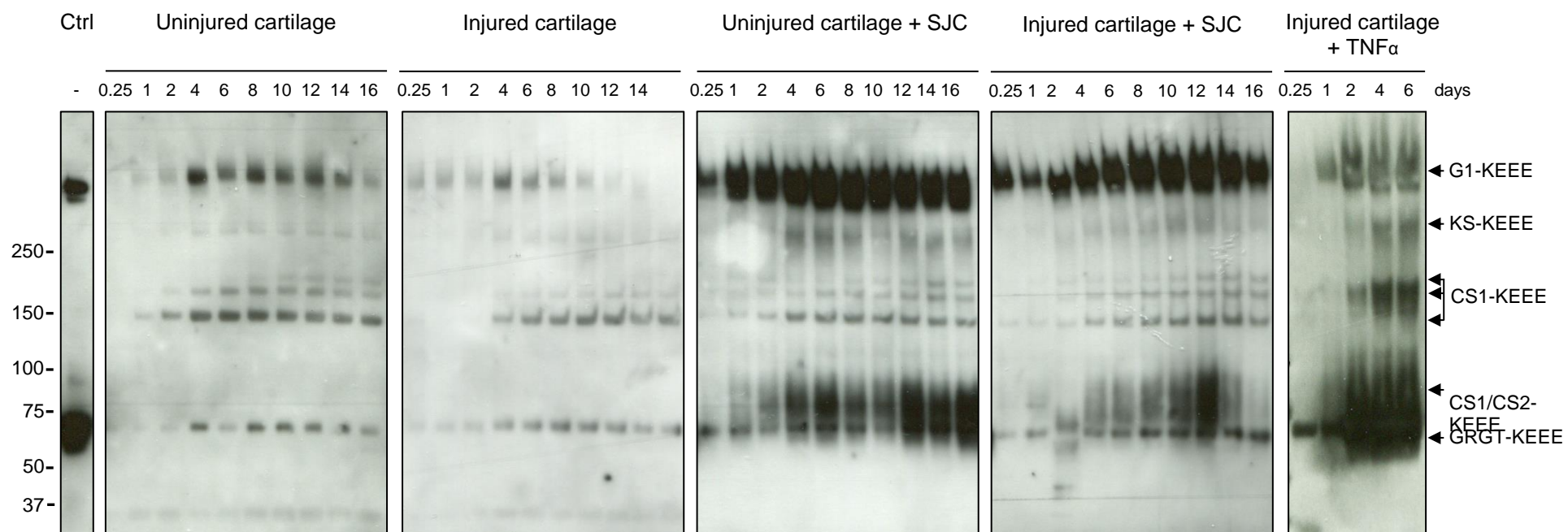


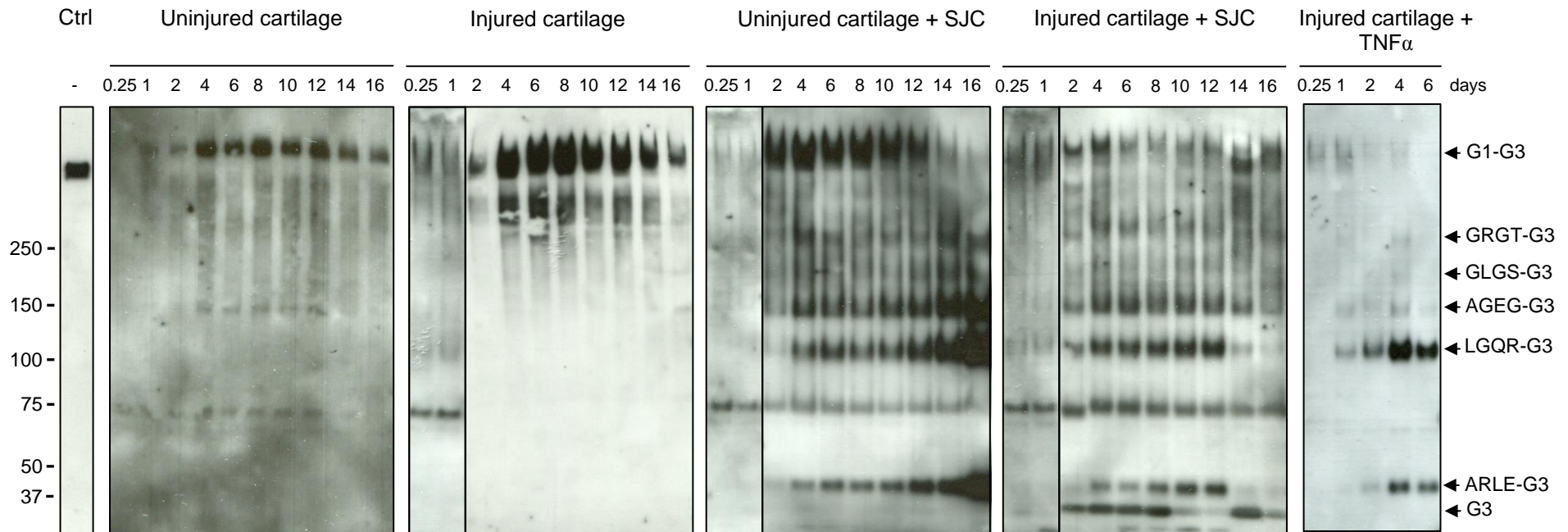
Fig. S2

(C)



# Fig. S2

## (D) G3



**Figure A2. Anti-FFGV (A), -ARGS (B), -KEEE (C) and -G3 (D) Western blot of medium samples.** Medium from cartilage explant cultures were collected at different time points (0.25 to 16 days), deglycosylated and run (40 – 53  $\mu$ l medium/lane) on 3-8% Tris-acetate SDS-gels and applied for Western blot. Representative Western blots images from full-sized blotted gels are shown. Band marked by \* is considered to be a false-positive immunoband since it could not be blocked by the corresponding immunopeptide. Ctrl, positive controls and standards: bovine aggrecan A1D1-fraction digested with MMP-3 for 24h (A), or with ADAMTS-4 for 24h (B), or with ADAMTS-4 for 10 min (C); bovine aggrecan A1D1-fraction (D). SJC, synovium-joint capsule.