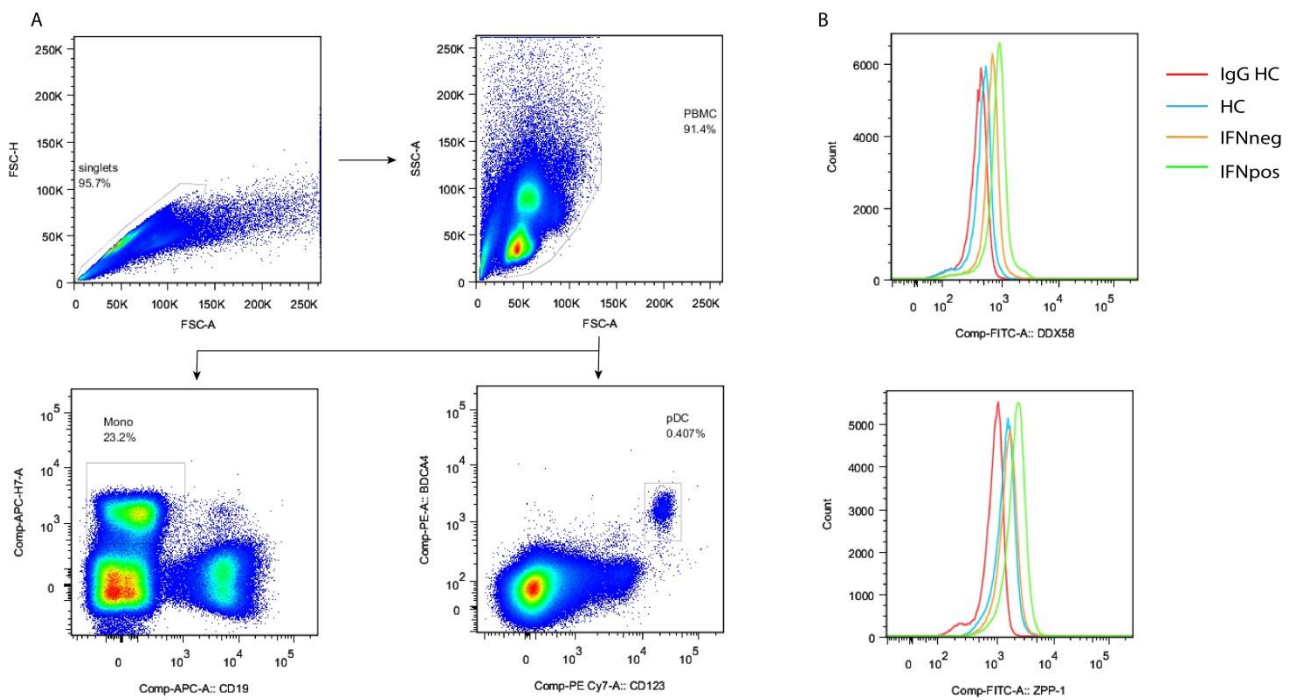


Additional file 2: Gating strategy and representative histogram



Additional figure S2: A) Gating strategy for CD14⁺ monocytes and CD123/BDC4⁺ pDCs. PBMCs were gated after removal of doublets and dead cells. Within the PBMC fraction, CD14⁺ monocytes were gated and CD123/BDC4⁺ pDCs **B)** representative histogram of protein expression levels (top: DDX58/RIG-I, bottom: ZBP-1).