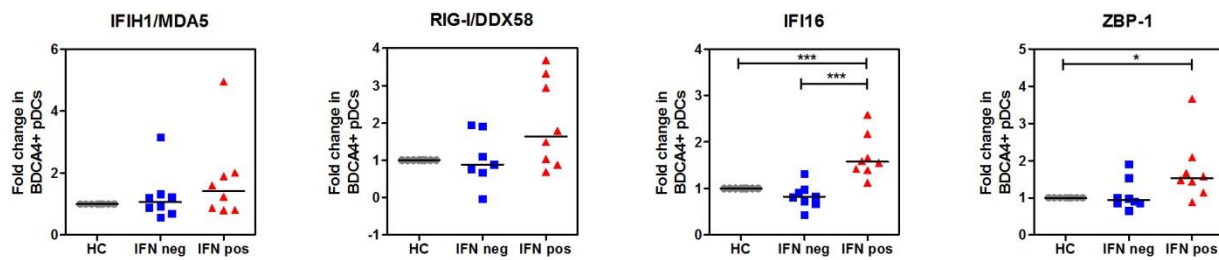


Additional file 3: RLR and DBR protein expression in pDC of cSLE patients



Additional figure S3: Flowcytometric analysis of MDA5, RIG-I, IFI16 and ZBP-1 in pDCs of IFNpos cSLE patients (n=8), IFNneg cSLE patients (n=8) and healthy controls (n=8). Each symbol represents an individual sample. To compare the three groups One-way ANOVA was used. Data represented in fold change compared to HC. * $p < 0.05$; ** $p < 0.01$; *** $p < 0.001$; **** $p < 0.0001$.