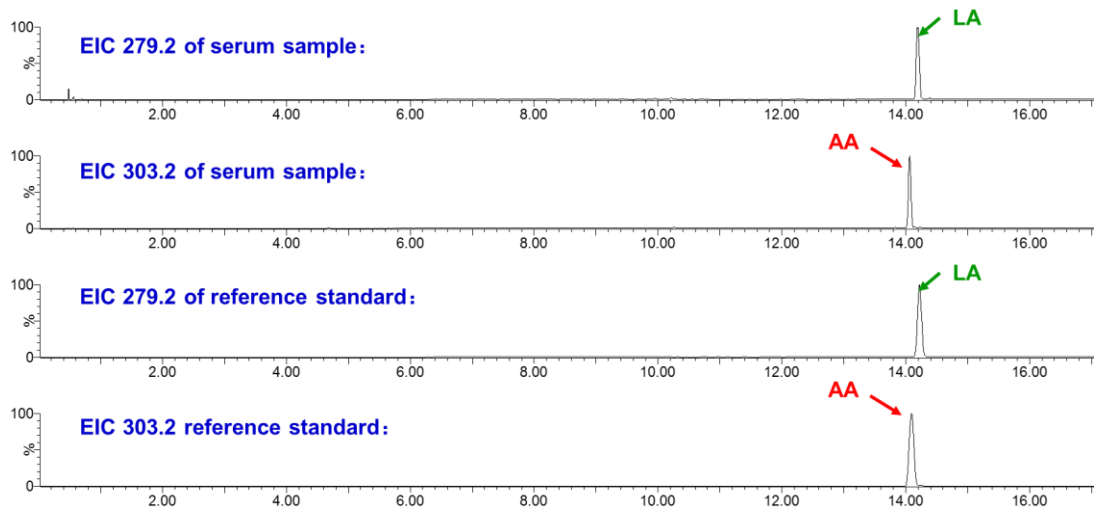
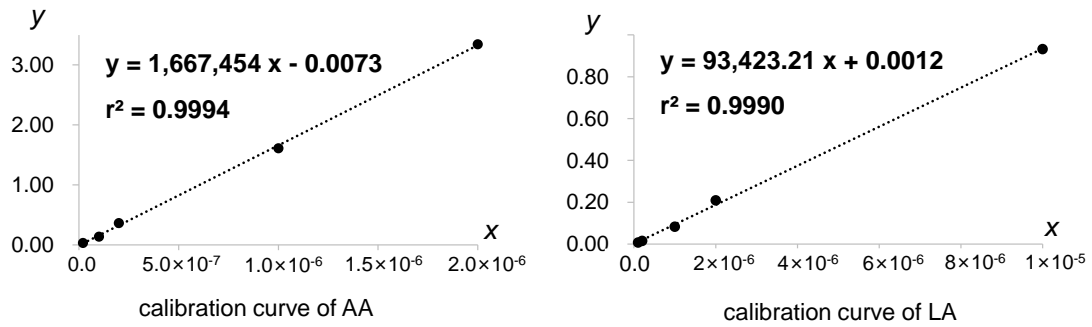


A



B



C

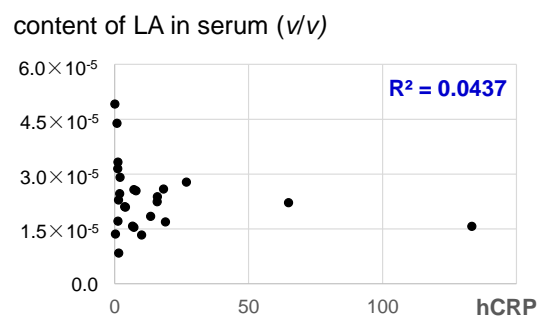
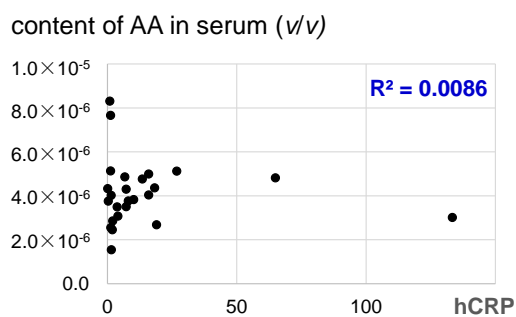
Contents of LA and AA in BD and HC samples

sample ID	sex*	age	hCRP	ESR	BDCAF 2006	IgG	IgA	IgM	content of AA (v/v)	content of LA (v/v)
BD-1	M	19	64.91	53	4	10.76	3.1	1.22	0.00048%	0.00222%
BD-2	F	16	15.92	36	2	19.37	4.1	1.1	0.00050%	0.00238%
BD-3	F	56	6.68	26	4	17.04	3.72	0.61	0.00049%	0.00157%
BD-4	M	45	18.23	18	1				0.00044%	0.00259%
BD-5	M	33	26.77	81	2	27.04	3.01	1.51	0.00051%	0.00278%
BD-6	M	25	133.34	32	3	14.39	3.48	1.1	0.00030%	0.00157%
BD-7	M	31	15.88	15		16.26	4.71	0.83	0.00040%	0.00224%
BD-8	M	42	18.99	20	2	11.29	3.42	1.37	0.00027%	0.00169%
BD-9	F	43	7.2	44	1	14.73	3.35	1.63	0.00035%	0.00154%
BD-10	M	30	13.47	53	1	18.94	1.64	1.41	0.00048%	0.00184%
BD-11	F	23	10.09	25	2	14.26	4.56	1.52	0.00038%	0.00133%
BD-12	F	32	8	7	2	10.7	2.06	1.32	0.00038%	0.00254%
BD-13	M	38	0.86	10	3	15.93	5.15	1.21	0.00083%	0.00439%

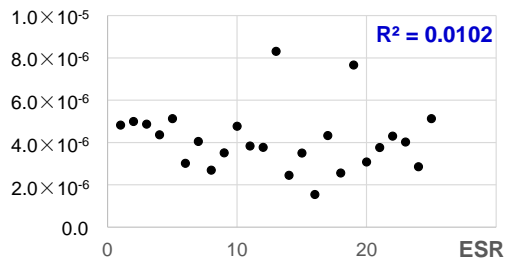
BD-14	M	55	1.86	3	1				0.00025%	0.00246%
BD-15	F	19	3.73	20	2				0.00035%	0.00211%
BD-16	F	15	1.5	14	2	15.98	2.84	1.43	0.00015%	0.00084%
BD-17	F	23	0.06	2	2				0.00043%	0.00491%
BD-18	F	45	1.26	20	3	10.48	1.82	2.09	0.00026%	0.00171%
BD-19	F	40	1.18	12	2	13.14	1.78	1.54	0.00077%	0.00314%
BD-20	M	34	4.03	11	2	13.84	3.09	1.47	0.00031%	0.00209%
BD-21	F	13	0.29	5	1	12.27	2.29	2.58	0.00038%	0.00136%
BD-22	M	24	7.22	6	4	10.5	2.23	0.46	0.00043%	0.00257%
BD-23	M	67	1.44	14	4	13.87	2.15	2.09	0.00040%	0.00229%
BD-24	F	46	2.03	15	4	11.35	5.06	1.15	0.00029%	0.00291%
BD-25	F	46	1.22	8	1	12.61	3.71	0.51	0.00051%	0.00332%
HC-1									0.00020%	0.00127%
HC-2									0.00020%	0.00111%
HC-3									0.00021%	0.00178%
HC-4									0.00022%	0.00128%
HC-5									0.00026%	0.00108%
HC-6									0.00007%	0.00142%
HC-7									0.00016%	0.00091%
HC-8									0.00024%	0.00121%
HC-9									0.00017%	0.00210%
HC-10									0.00025%	0.00113%
HC-11									0.00016%	0.00108%
HC-12									0.00021%	0.00169%
HC-13									0.00021%	0.00142%
HC-14									0.00024%	0.00165%
HC-15									0.00017%	0.00146%
HC-16									0.00013%	0.00162%
HC-17									0.00018%	0.00182%
HC-18									0.00030%	0.00185%
HC-19									0.00006%	0.00084%

* Note: M, male; F, female.

D



content of AA in serum (v/v)



content of LA in serum (v/v)

