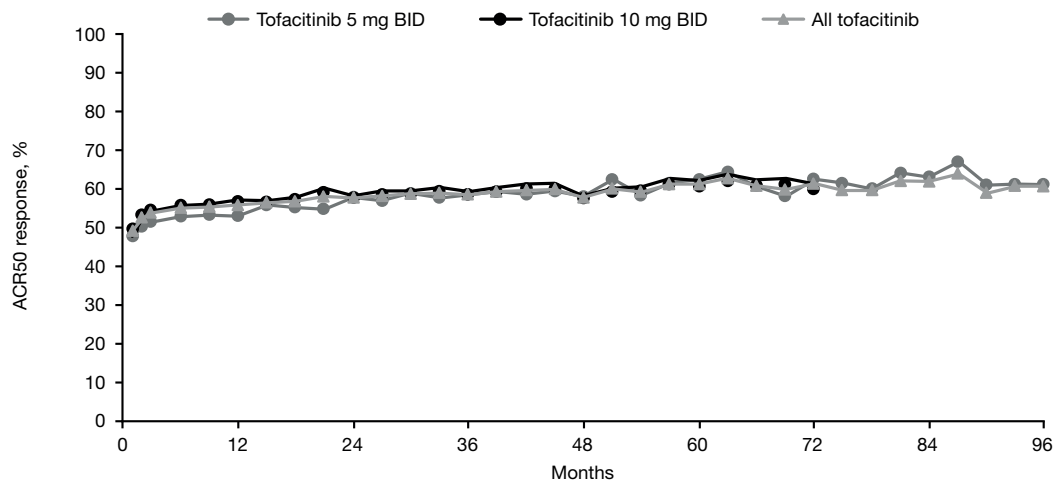
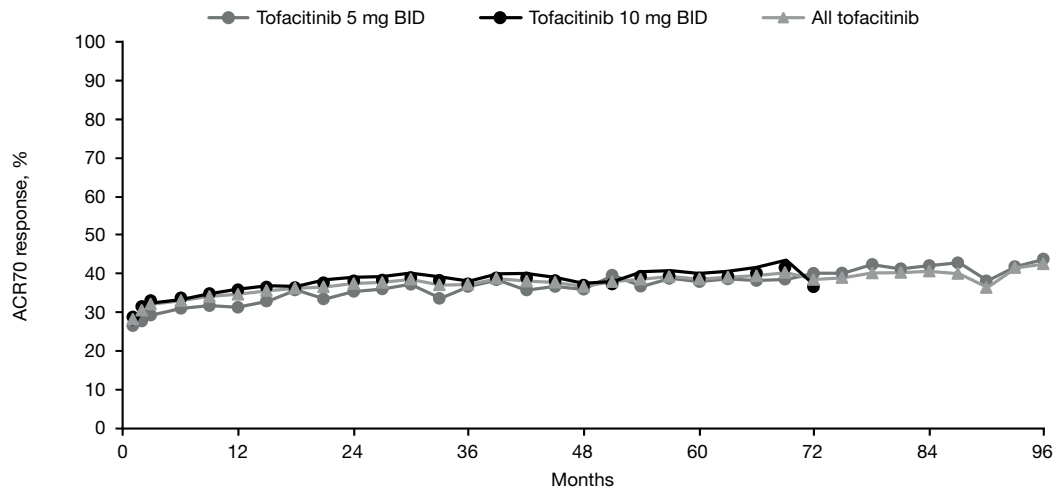


a

	0	12	24	36	48	60	72	84	96
5 mg, N =	1114	972	824	730	581	411	339	271	144
10 mg, N =	3307	2891	2464	2157	1486	920	287		
All, N =	4421	3863	3288	2887	2067	1331	626	315	160
n/N (%)	1	12	24	36	48	60	72	84	96
Tofacitinib 5 mg BID	531/1114 (47.7)	515/972 (53.0)	476/824 (57.8)	427/730 (58.5)	337/581 (58.0)	257/411 (62.5)	212/339 (62.5)	171/271 (63.1)	88/144 (61.1)
Tofacitinib 10 mg BID	1639/3307 (49.6)	1640/2891 (56.7)	1421/2464 (57.7)	1262/2157 (58.5)	856/1486 (57.6)	558/920 (60.7)	172/287 (59.9)	24/44 (54.6)	9/16 (56.3)
All tofacitinib	2170/4421 (49.1)	2155/3863 (55.8)	1897/3288 (57.7)	1689/2887 (58.5)	1193/2067 (57.7)	815/1331 (61.2)	384/626 (61.3)	195/315 (61.9)	97/160 (60.6)

b

	0	12	24	36	48	60	72	84	96
5 mg, N =	1114	972	824	730	581	411	336	271	144
10 mg, N =	3307	2891	2464	2157	1486	920	287		
All, N =	4421	3863	3288	2887	2067	1331	626	315	160
n/N (%)	1	12	24	36	48	60	72	84	96
Tofacitinib 5 mg BID	297/1114 (26.7)	305/972 (31.4)	292/824 (35.4)	268/730 (36.7)	209/581 (36.0)	156/411 (38.0)	136/339 (40.1)	114/271 (42.1)	63/144 (43.8)
Tofacitinib 10 mg BID	953/3307 (28.8)	1036/2891 (35.8)	940/2464 (38.2)	807/2157 (37.4)	550/1486 (37.0)	358/920 (38.9)	105/287 (36.6)	14/44 (31.8)	5/16 (31.3)
All tofacitinib	1250/4421 (28.3)	1341/3863 (34.7)	1232/3288 (37.5)	1075/2887 (37.2)	759/2067 (36.7)	514/1331 (38.6)	241/626 (38.5)	128/315 (40.6)	68/160 (42.5)