

Figure 1A. ApoE in rat CSF

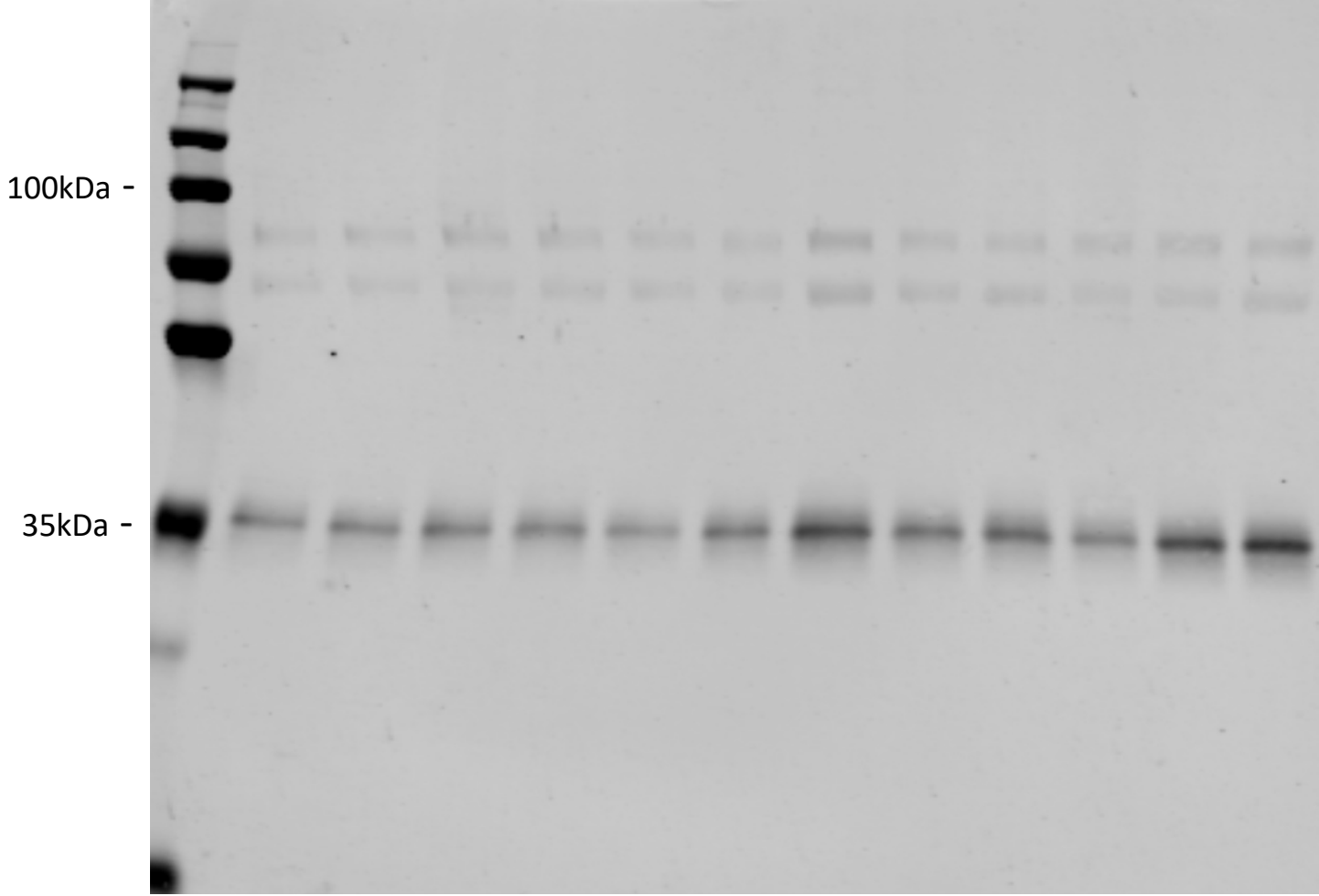
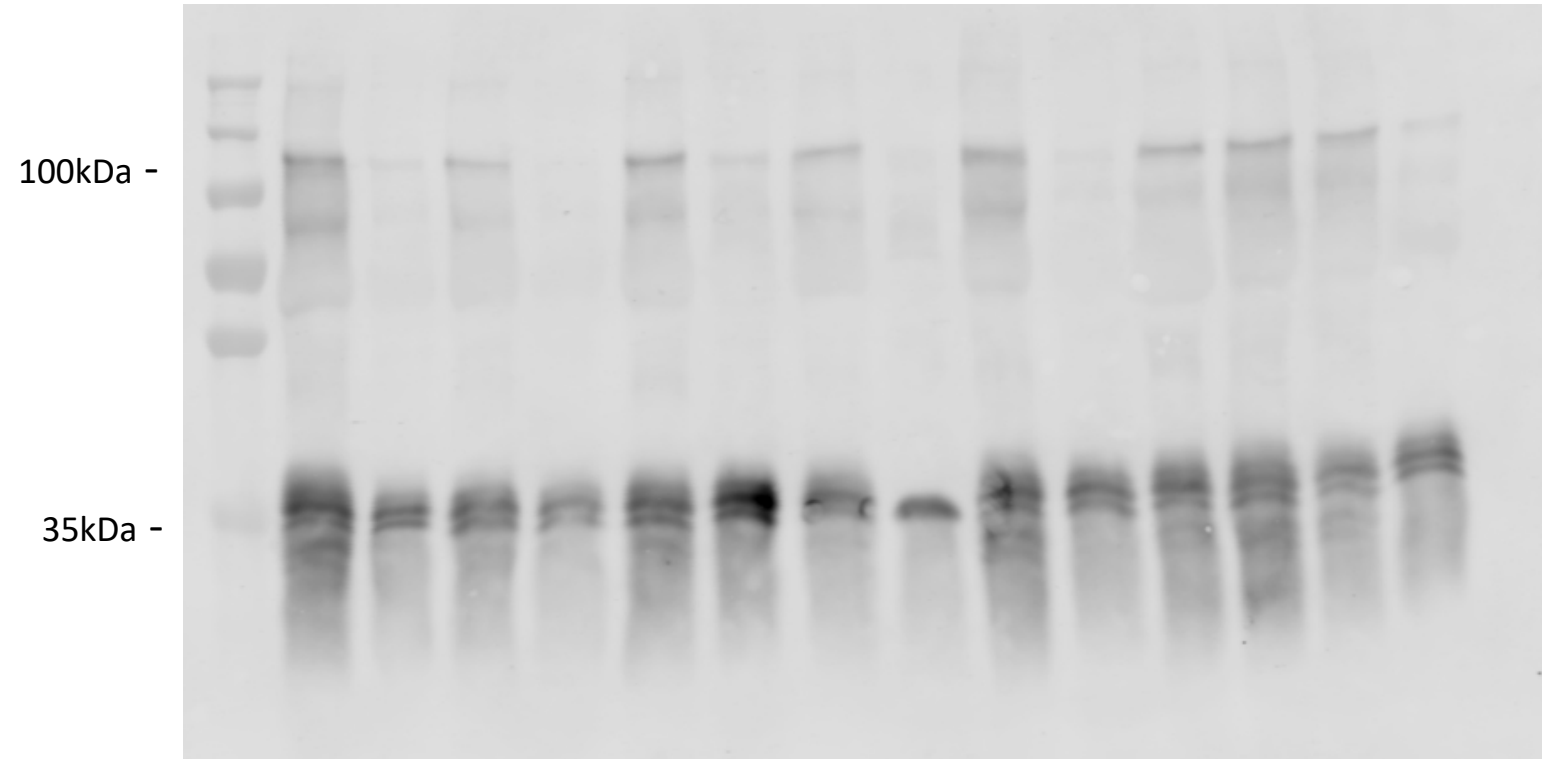
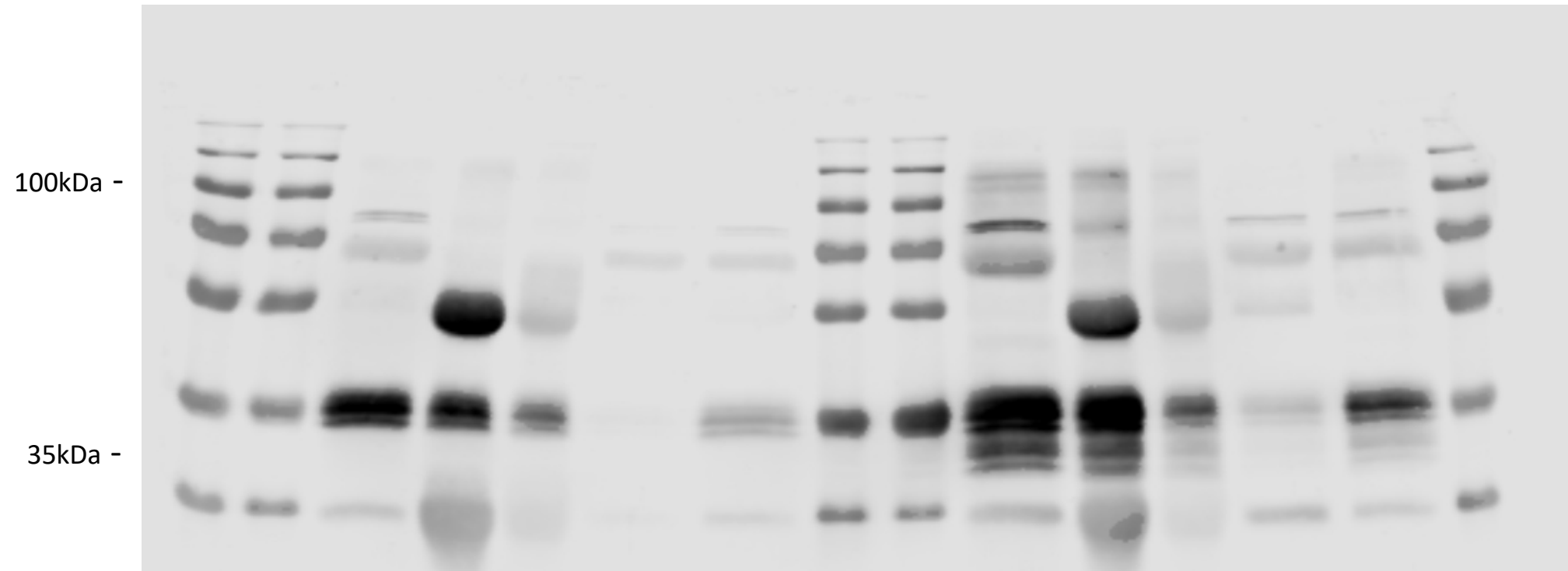


Figure 2A. ApoE in human CSF



Lanes 3, 4, 11, 14 and 15

Figure 2B. ApoE immunoprecipitation in human CSF



Lanes 3, 4, 6, 10, 11 and 13 used

Figure 2C. ApoE deglycosylation in human CSF

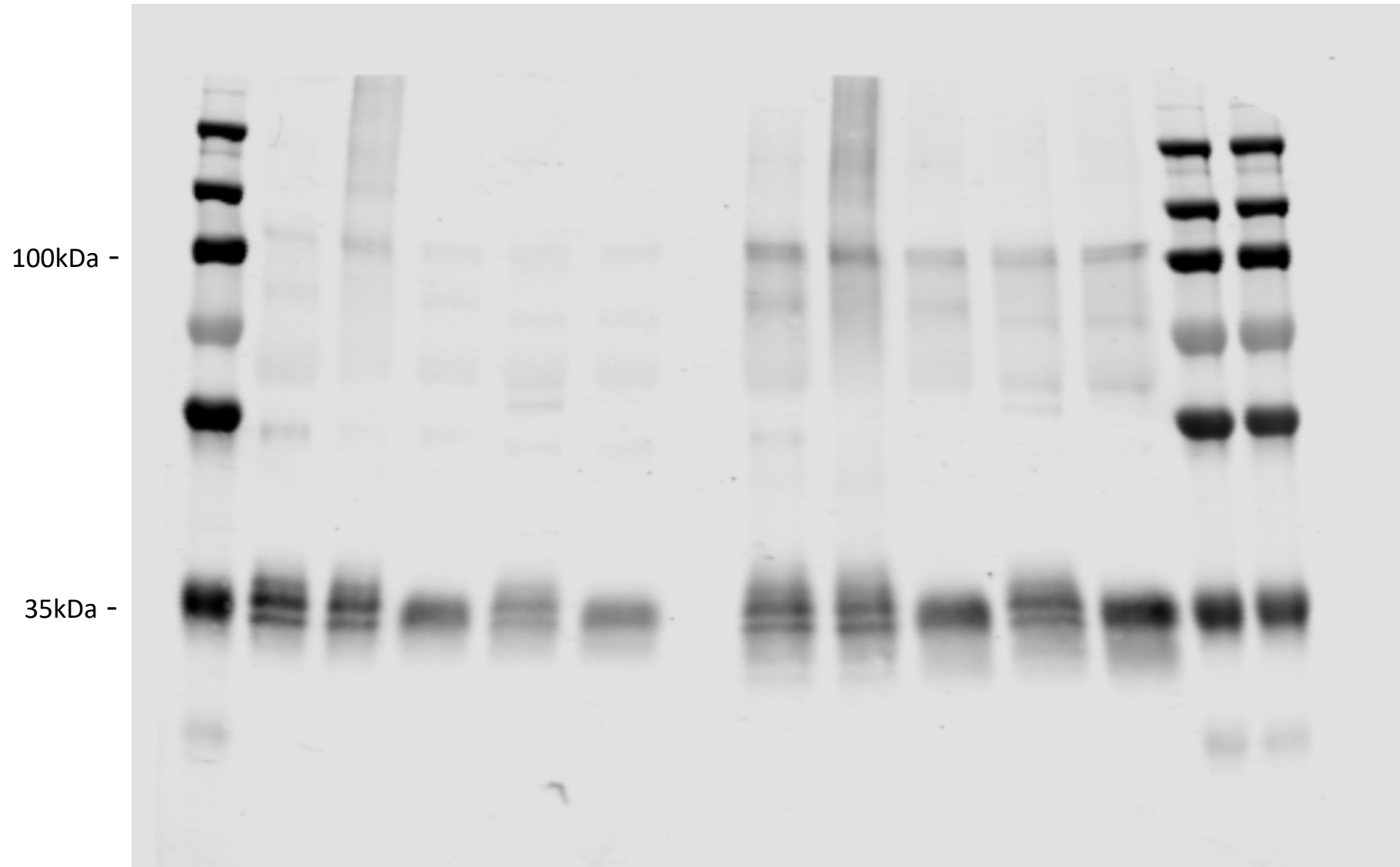
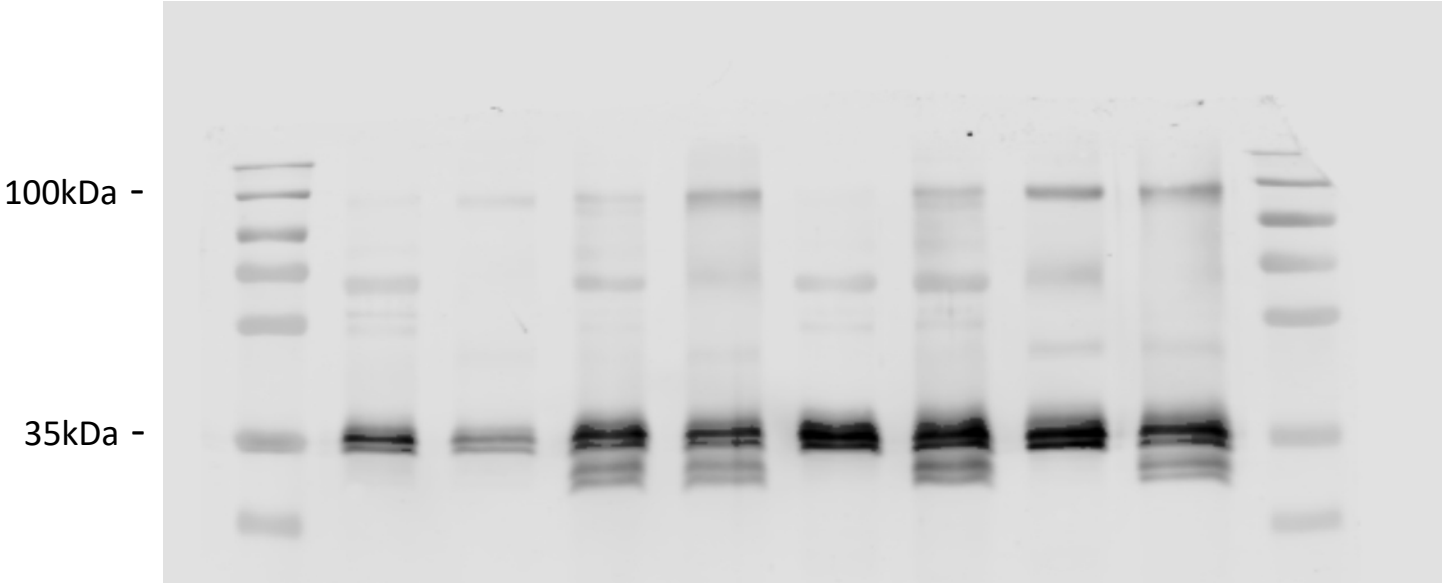


Figure 3A. ApoE under reducing and non-reducing conditions using standard anti-apoE antibody in human CSF



Lanes 5-8 used

Figure 3B. ApoE under reducing and non-reducing conditions using anti-apoE4 antibody in human CSF

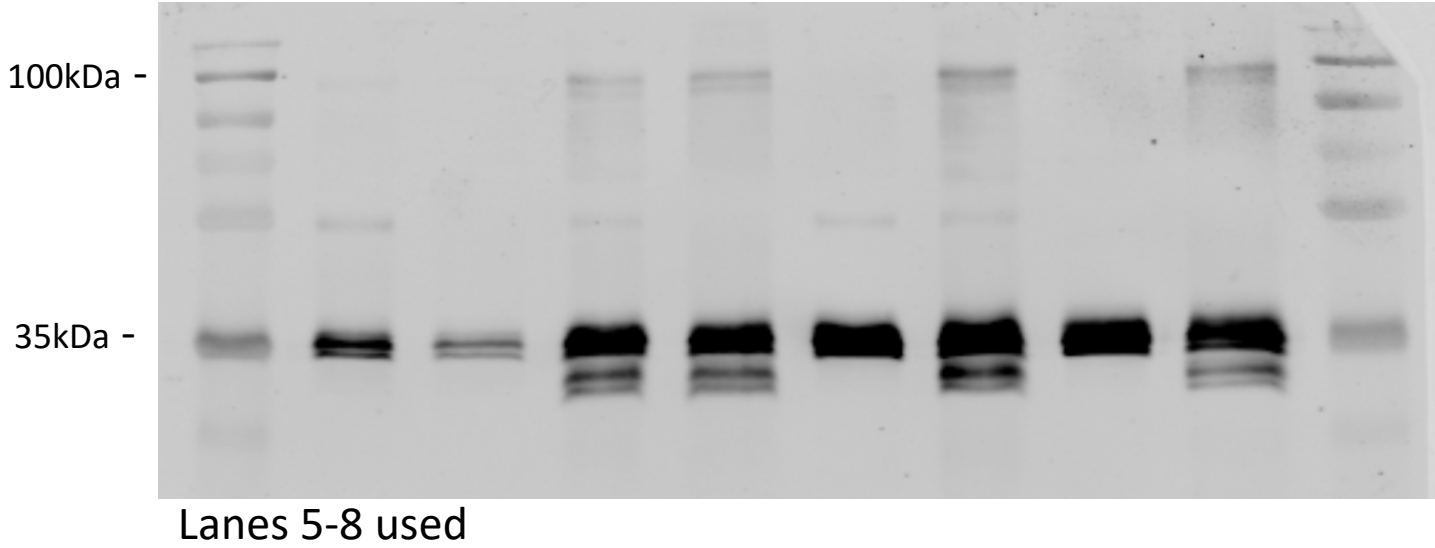
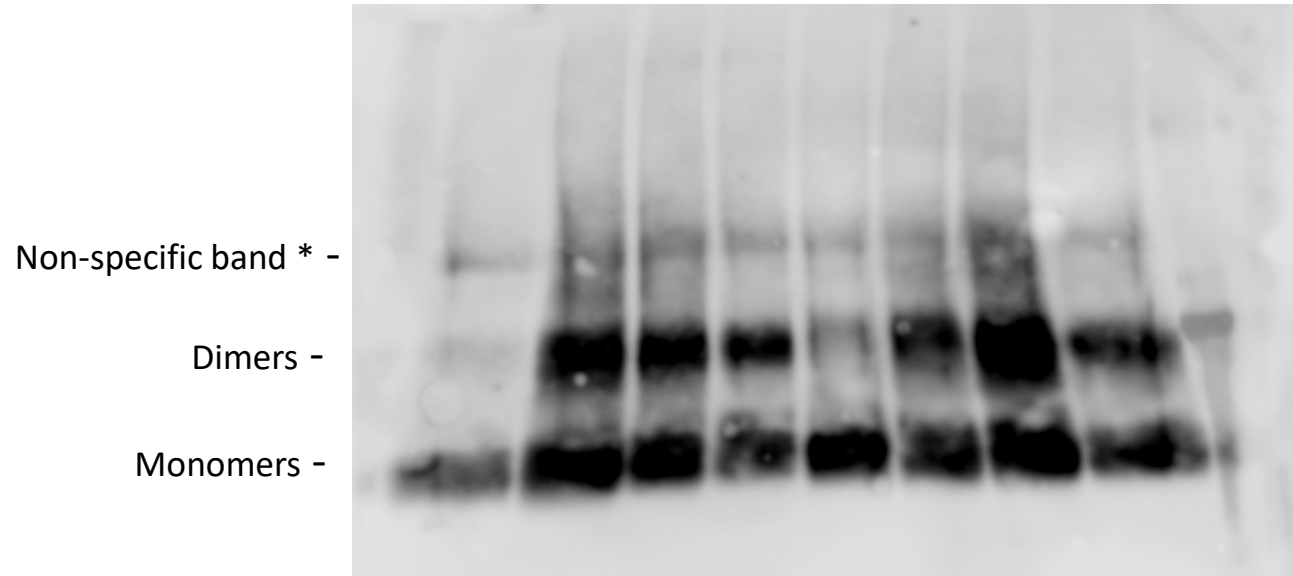
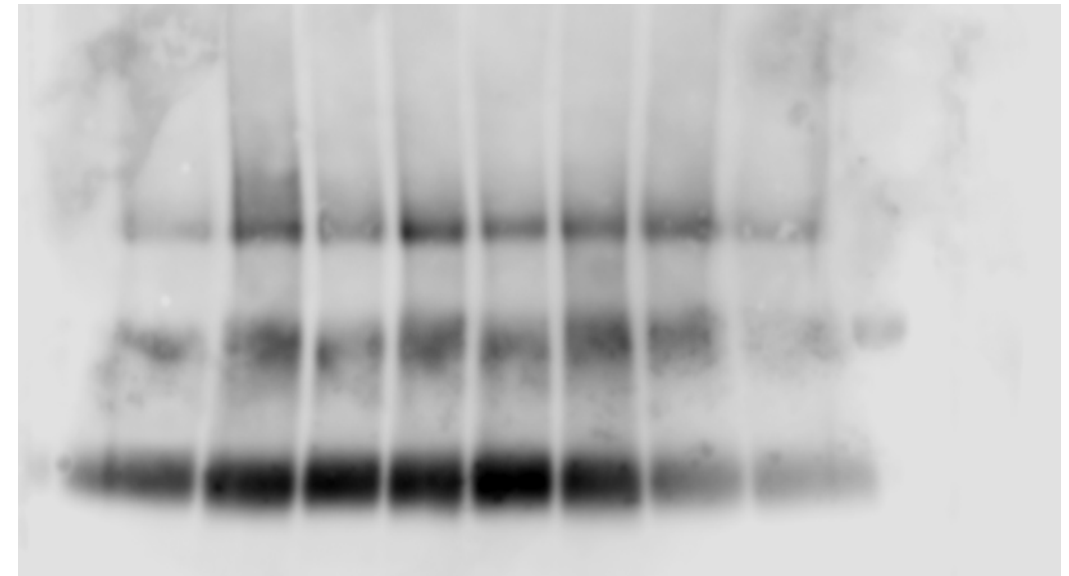


Figure 3C. ApoE under native conditions in human CSF

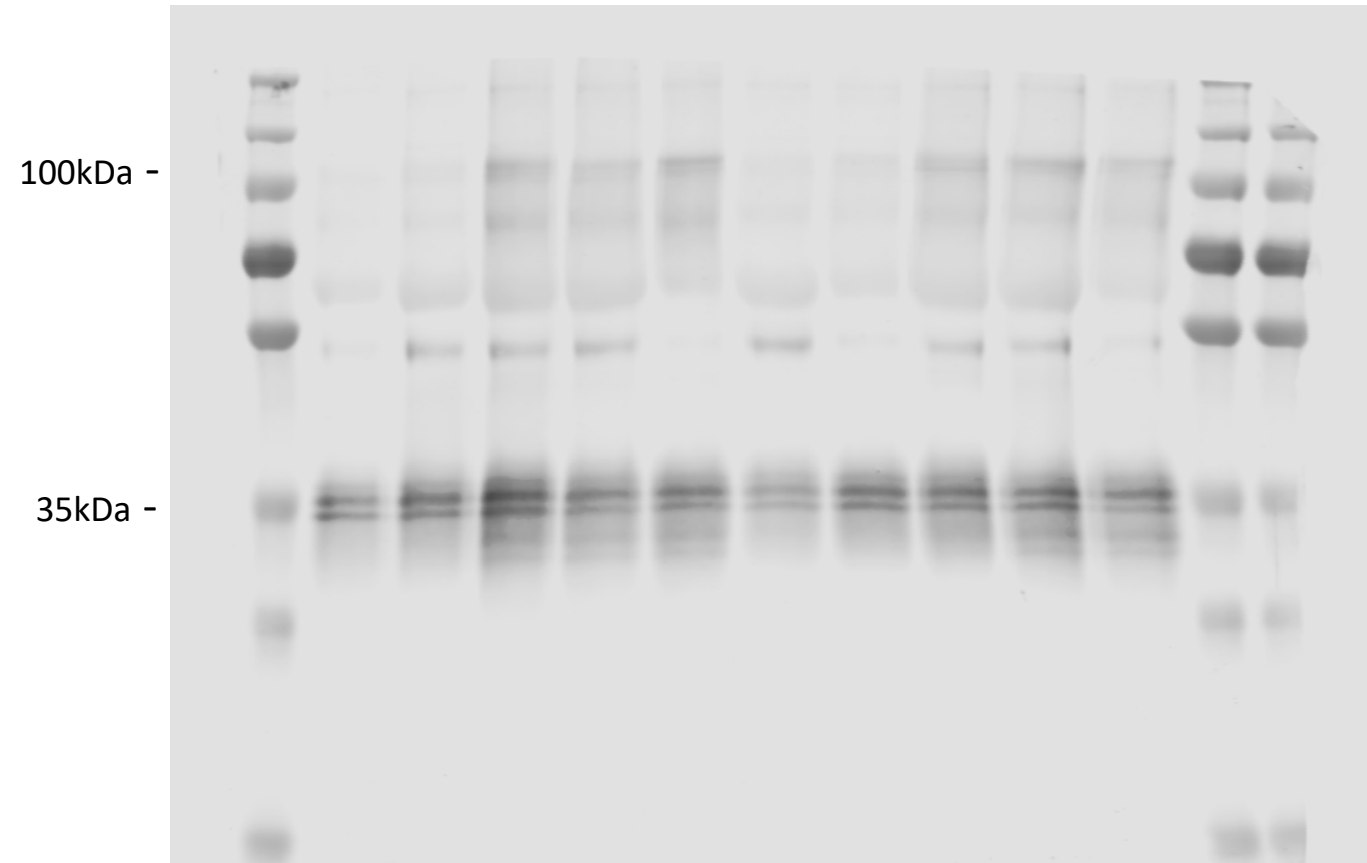


Lanes 3, 4 and 5 used



Lanes 5 and 6 used

Figure 4A. Representative blot of apoE in human CSF from the Gothenburg cohort



Lanes 2, 3, 4, 5 and 6 used

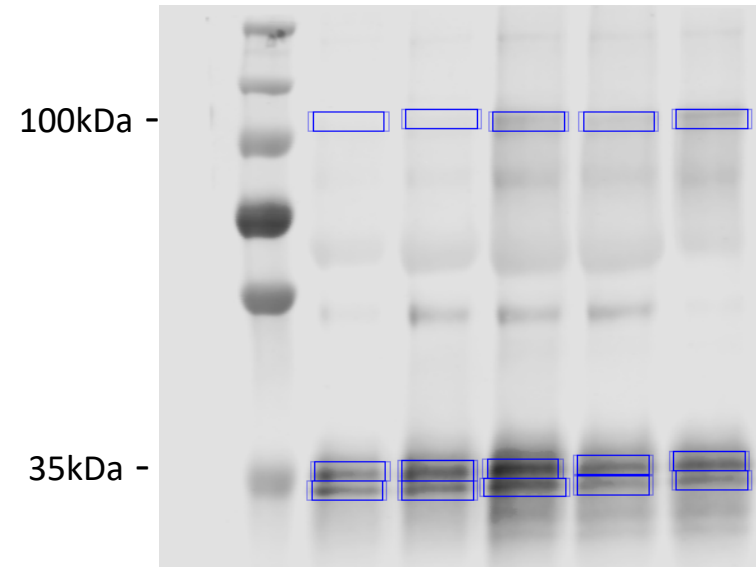
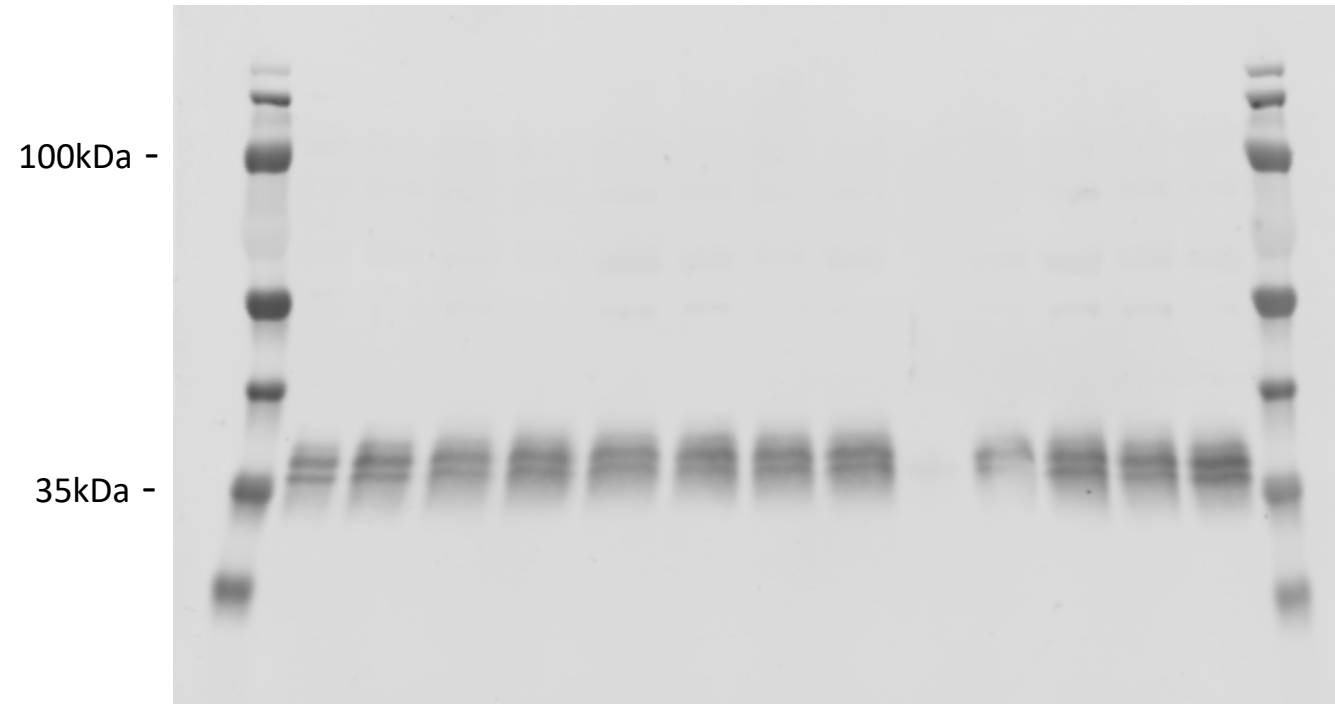


Figure 5A. Representative blot of apoE in human CSF from the Barcelona cohort



Lanes 3, 4, 12, 13 and 14 used