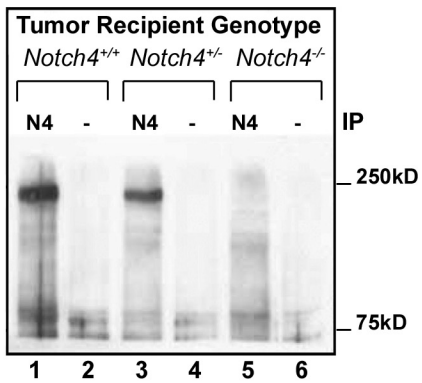


Supplementary Figure 1



Supplementary Figure 1: Mammary glands from *Notch4*^{-/-} mice exhibit no detectable *Notch4* protein expression. *Notch4* immunoprecipitation-immunoblot analysis on mammary tissue lysates from wild-type (lane 1), *Notch4*^{+/-} (lane 3), and *Notch4*^{-/-} (lane 5) mice shows a lack of *Notch4* protein in *Notch4*^{-/-} mice. Lanes 2, 4 and 6 are the same samples immunoprecipitated with a control rabbit IgG.