

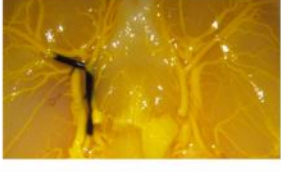
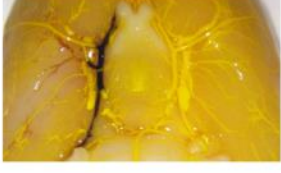
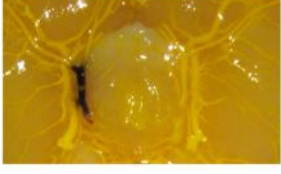
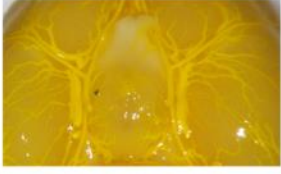
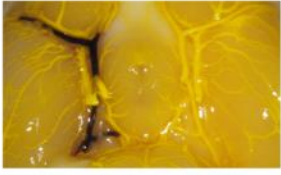
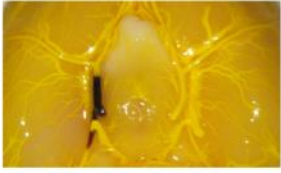
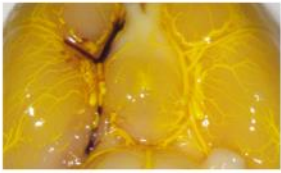
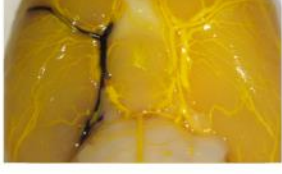
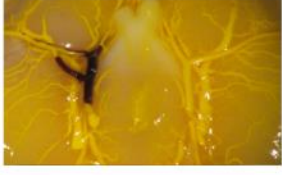
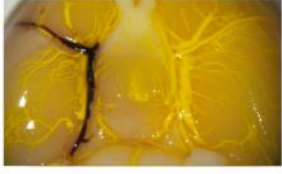
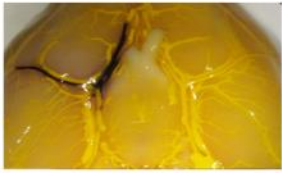
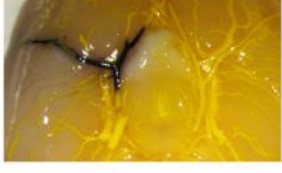
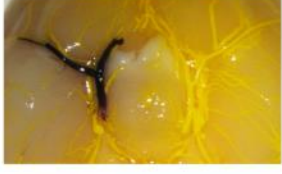
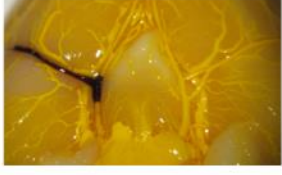
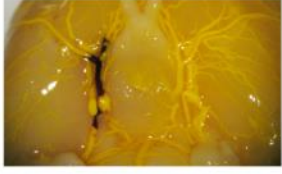
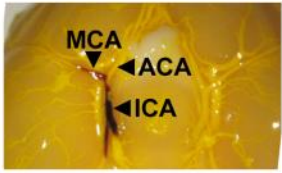
**Additional File. Vascular filling and clot presence (Study 2).** Vessels were perfused post-mortem with Microfil (yellow) to visualise the vasculature and clot presence (black). All animals are presented. (A) shows the vasculature from the view of the circle of willis, (B) shows the corresponding lateral surface of the right hemisphere. Vessels labelled are: middle cerebral artery (MCA), anterior cerebral artery (ACA) and internal carotid artery (ICA). Images of all brains can be viewed in the supplemental data. Treatment groups were saline, tPA or ultrasound insonation with tPA and BR38 microbubbles (U/S + tPA + BR38).

A

Saline

tPA

U/S + tPA + BR38



**B**

Saline

tPA

U/S + tPA + BR38

