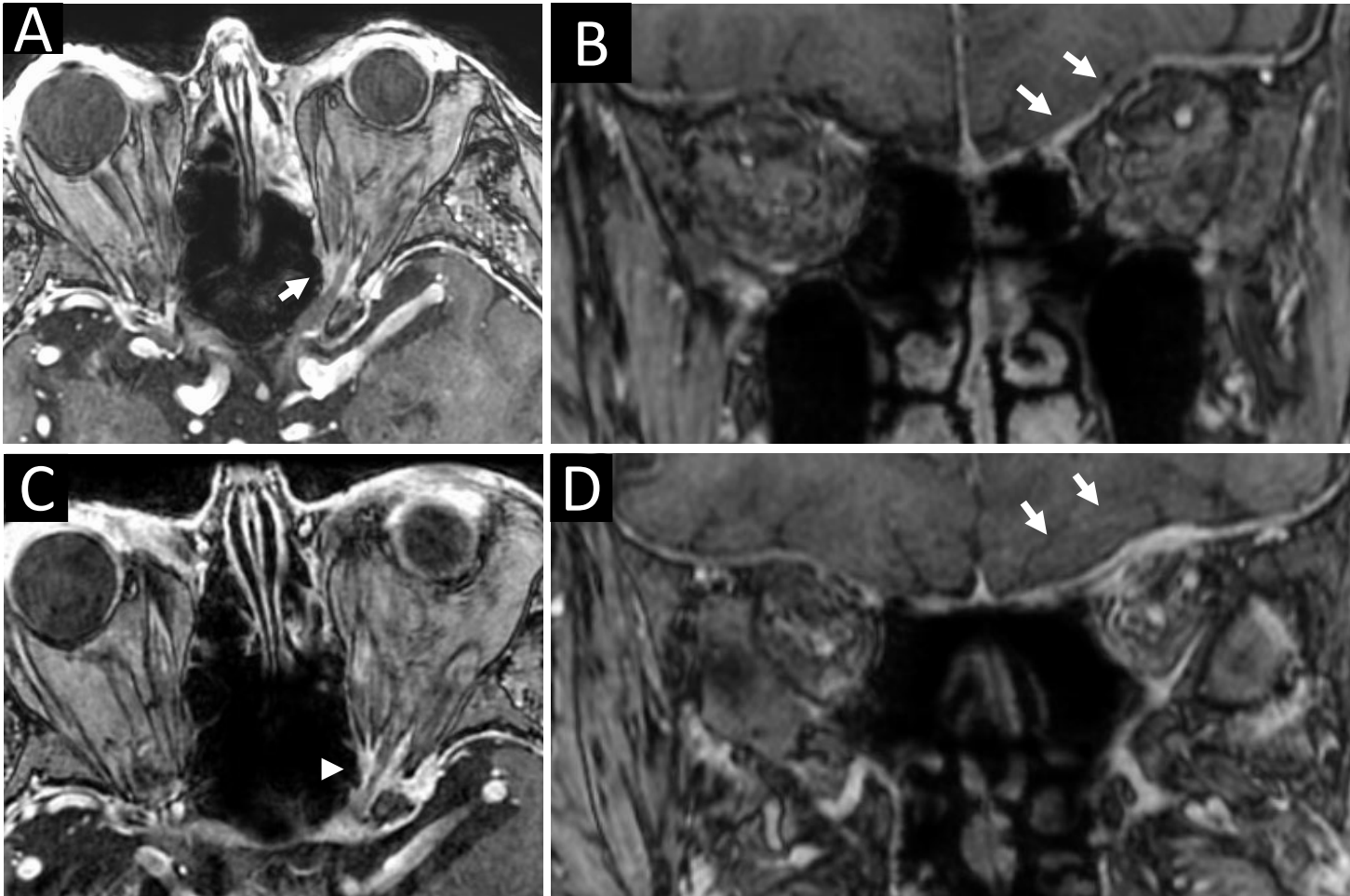


Supplemental Figure



Additional file 1: Figure. Contrast-enhanced MRI images during remission and recurrence
A, B: MRI images at the time of remission, taken 2 weeks after the start of treatment.
C, D: MRI images taken for follow-up, one week before the patient realized his vision had deteriorated for the recurrence.

White arrows indicate enhanced dura of the bottom of left frontal cortex (B, D) . The enhancement in (D) appears thicker and stronger than that of in (B).

White arrow head points enhancement surrounding mildly enhanced the optic nerve (C).