

Supplementary materials

Supplementary Table S1: Insulin dose at baseline and month 6 in the modified intent-to-treat (mITT) population (pooled data from EDITION 1, 2 and 3)

		Baseline insulin dose (U/kg/day)		Insulin dose at month 6 (U/kg/day)		Change from baseline to month 6 (U/kg/day)	
		Gla-300	Gla-100	Gla-300	Gla-100	Gla-300	Gla-100
		n=912	n=902	n=792	n=778	n=792	n=778
Age	<65 years	0.50 ± 0.31	0.50 ± 0.31	0.86 ± 0.37	0.77 ± 0.32	0.36 ± 0.26	0.26 ± 0.23
		n=323	n=329	n=280	n=277	n=280	n=277
	≥65 years	0.49 ± 0.30	0.50 ± 0.28	0.80 ± 0.35	0.73 ± 0.32	0.31 ± 0.23	0.23 ± 0.21
BMI	<30 kg/m ²	0.44 ± 0.31	0.44 ± 0.30	0.78 ± 0.37	0.69 ± 0.35	0.33 ± 0.26	0.24 ± 0.25
		n=909	n=941	n=788	n=803	n=788	n=803
	≥30 kg/m ²	0.51 ± 0.30	0.52 ± 0.31	0.87 ± 0.36	0.78 ± 0.31	0.35 ± 0.25	0.25 ± 0.22
Age at onset of diabetes	<40 years	0.55 ± 0.34	0.54 ± 0.33	0.92 ± 0.42	0.79 ± 0.31	0.35 ± 0.25	0.25 ± 0.24
		n=314	n=302	n=263	n=259	n=263	n=259
	40–50 years	0.51 ± 0.30	0.52 ± 0.30	0.86 ± 0.34	0.77 ± 0.33	0.35 ± 0.25	0.24 ± 0.24
		n=455	n=493	n=396	n=432	n=396	n=432
	>50 years	0.45 ± 0.28	0.46 ± 0.29	0.79 ± 0.34	0.72 ± 0.32	0.34 ± 0.25	0.25 ± 0.21
		n=461	n=433	n=409	n=363	n=409	n=363
Diabetes duration	<10 years	0.41 ± 0.27	0.41 ± 0.28	0.80 ± 0.33	0.73 ± 0.32	0.38 ± 0.26	0.29 ± 0.23
		n=474	n=491	n=407	n=406	n=407	n=406
	≥10 years	0.55 ± 0.31	0.56 ± 0.31	0.87 ± 0.38	0.78 ± 0.32	0.32 ± 0.24	0.22 ± 0.22
		n=756	n=737	n=661	n=648	n=661	n=648

Data presented as mean ± SD. BMI, body mass index; mITT, modified intent-to-treat; SD, standard deviation.

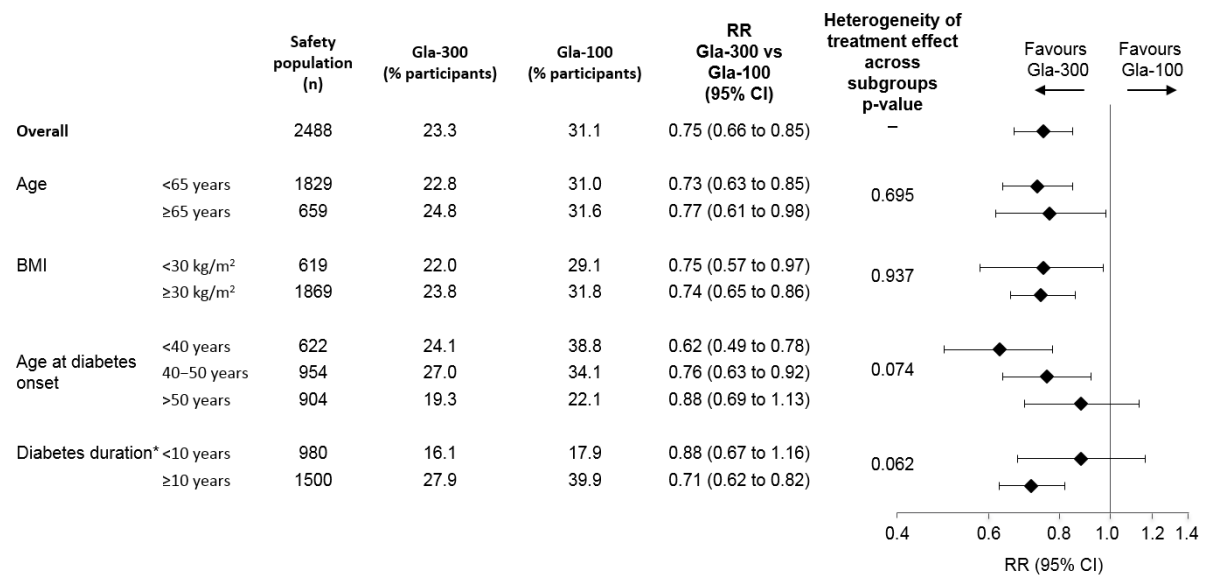
Supplementary Table S2: Baseline characteristics of population included in patient-level meta-analysis of people with Type 2 DM by subgroup, by age at onset of diabetes subgroups (pooled data from EDITION 1, 2 and 3)

	Age at onset of diabetes					
	<40 years		40–50 years		>50 years	
	Gla-300	Gla-100	Gla-300	Gla-100	Gla-300	Gla-100
Age	50.5 ± 9.4	49.8 ± 9.3	57.9 ± 6.8	57.5 ± 6.8	65.1 ± 6.0	65.7 ± 6.3
Weight, kg	104.7 ± 25.6	102.7 ± 23.4	101.0 ± 22.2	101.1 ± 21.7	95.6 ± 20.7	96.4 ± 20.1
BMI, kg/m ²	36.0 ± 7.6	35.3 ± 6.8	35.0 ± 7.0	35.3 ± 6.5	33.6 ± 6.2	33.9 ± 5.9
eGFR*, mL/min/1.73 m ²	86.41 ± 22.08	85.94 ± 20.54	79.61 ± 19.23	78.61 ± 21.43	73.59 ± 19.09	73.89 ± 18.96

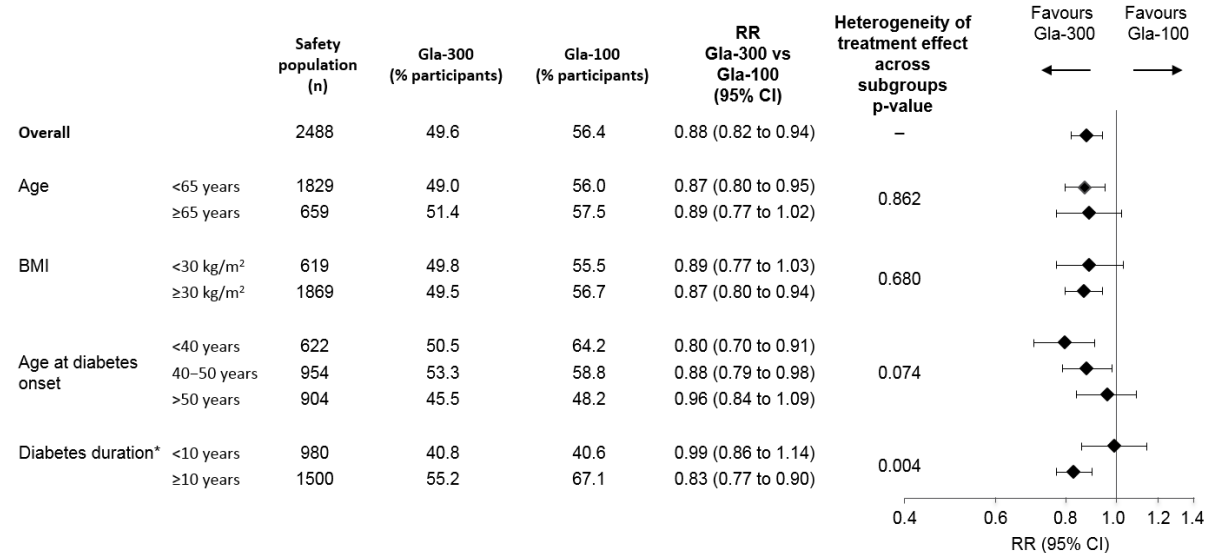
*eGFR was calculated using the modification of diet in renal disease formula. Values are mean ± standard deviation unless otherwise stated. BMI, body mass index; eGFR, estimated glomerular filtration rate; Type 2 DM, Type 2 diabetes

Supplementary Figure S1: Relative risk of experiencing documented symptomatic (≤ 3.9 mmol/L [≤ 70 mg/dL]) hypoglycemia a) during the night (00:00–05:59 h) and b) at any time of day (24 h), over 6 months of treatment by subgroup (% participants with one or more event; safety population; pooled data for EDITION 1, 2 and 3)

a)



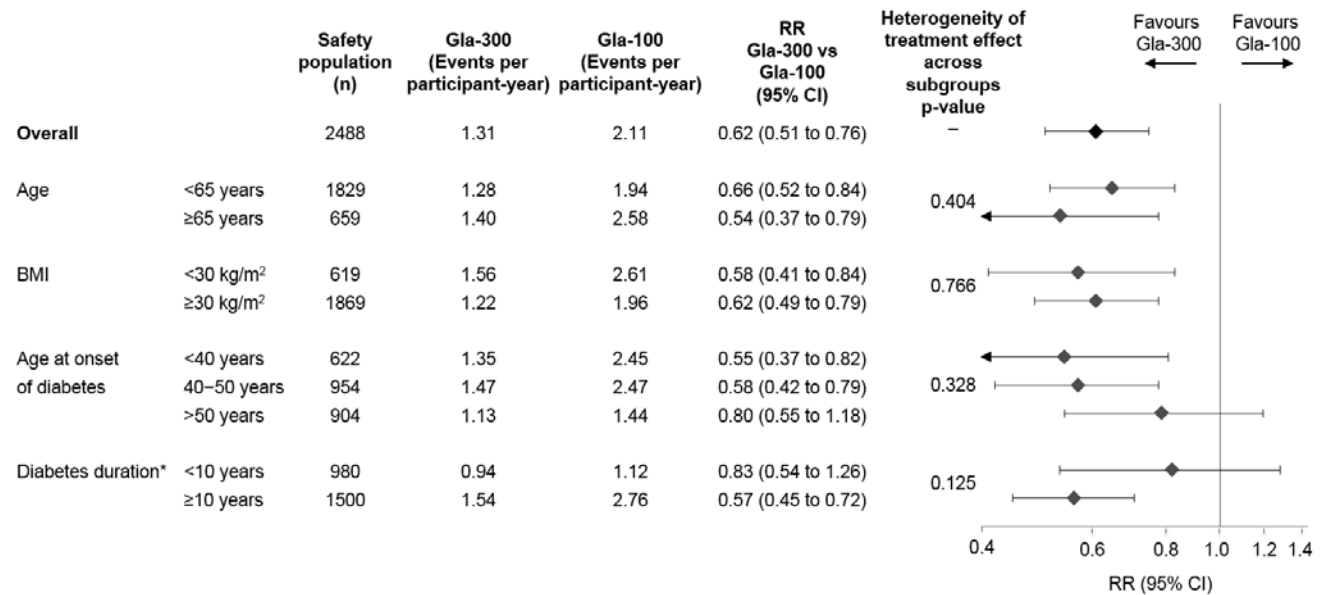
b)



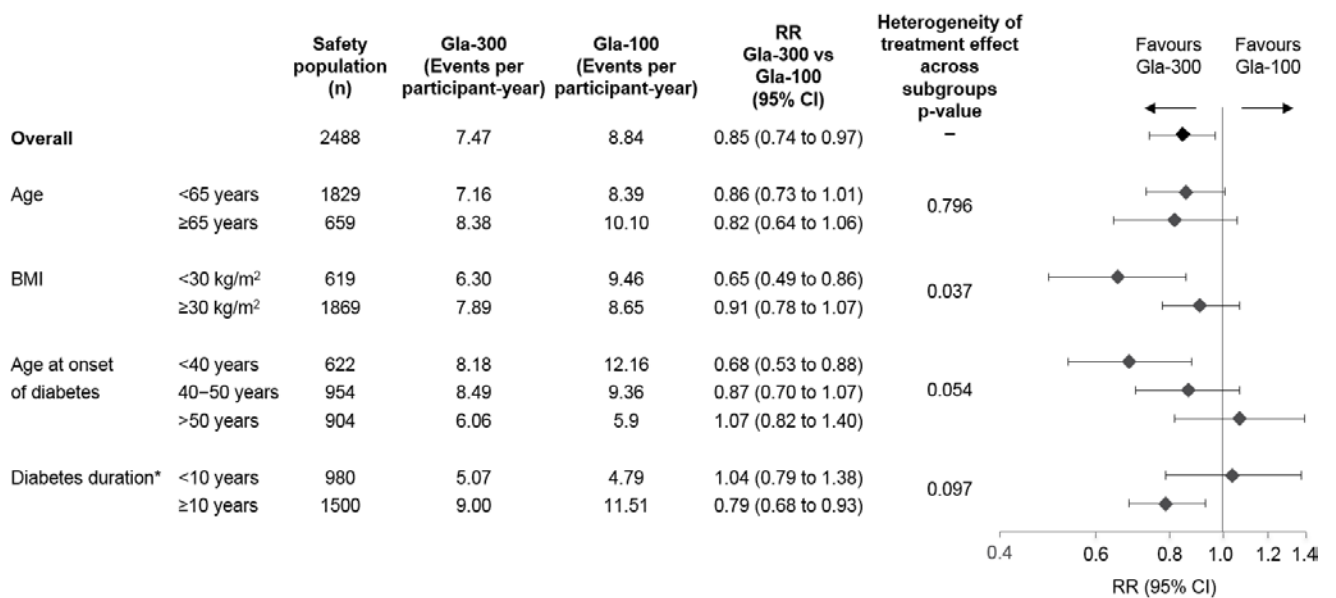
*Diabetes duration not available for 8 participants. BMI, body mass index; CI confidence interval; RR, relative risk

Supplementary Figure S2: Annualized rates of documented symptomatic (≤ 3.9 mmol/L [≤ 70 mg/dL]) hypoglycemia a) during the night (00:00–05:59 h) and b) at any time of day (24 h), over 6 months of treatment by subgroup (events per participant-year; safety population)

a)

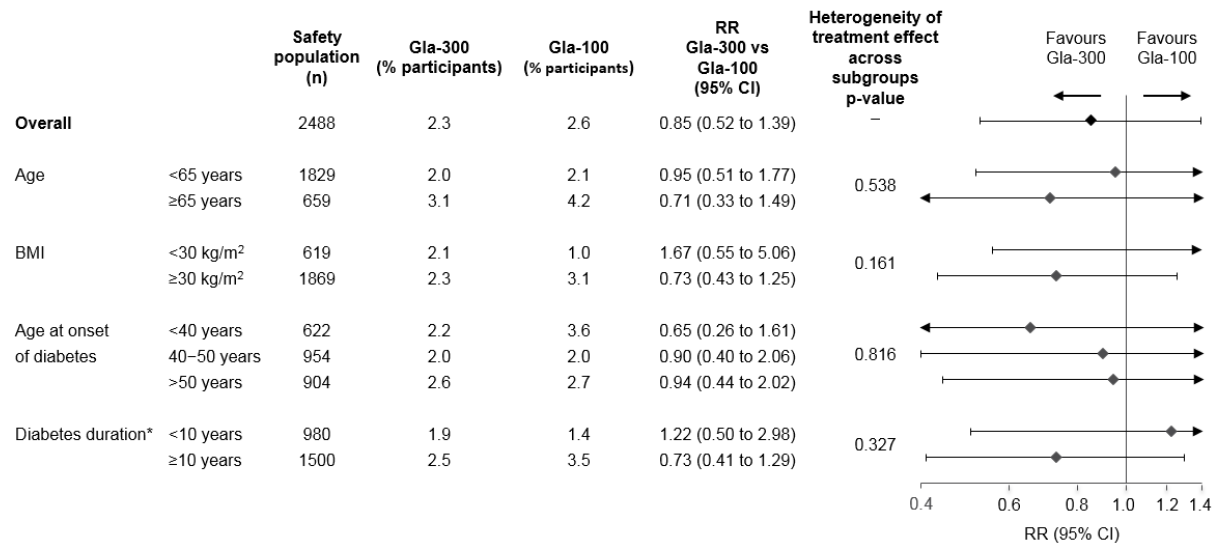


b)



*Diabetes duration not available for 8 participants. Arrows indicate where the data extend beyond the presented axis limits. BMI, body mass index; CI confidence interval; RR, rate ratio

Supplementary Figure S3: Relative risk of experiencing severe hypoglycemia at any time of day (24 h), over 6 months of treatment by subgroup (% participants with one or more event; safety population; pooled data for EDITION 1, 2 and 3)



*Diabetes duration not available for 8 participants. Arrows indicate where data extend beyond the presented axis limits. BMI, body mass index; CI confidence interval; RR, relative risk