

Cover page

Title:

Adherence and persistence to basal insulin among people with type 2 diabetes in Europe - a systematic literature review and meta-analysis

Authors:

Esteban J Gimeno¹, Mette Bøgelund², Sara Larsen³, Anna Okkels², Signe B Reitzel², Hongye Ren³, Domingo Orozco-Beltran⁴

Affiliations:

¹Faculty of Medicine, Universidad Europea de Madrid, Madrid, Spain ²EY Economics, Dirch Passers Allé 36, 2000 Frederiksberg, Denmark, ³Novo Nordisk, Region North West Europe, Kay Fiskers Plads 10, 7th floor, 2300 Copenhagen S, Denmark, ⁴Cátedra de Medicina de Familia, Departamento de Medicina Clínica, Universidad Miguel Hernández, Alicante, España

Corresponding author:

Hongye Ren

Novo Nordisk, Region North West Europe, Kay Fiskers Plads 10, 7th floor, 2300 Copenhagen S, Denmark
HYRN@novonordisk.com

+45 3075 2419

Supplementary material

Figure S1: Forest plot for non-persistence within 6 months of basal insulin treatment

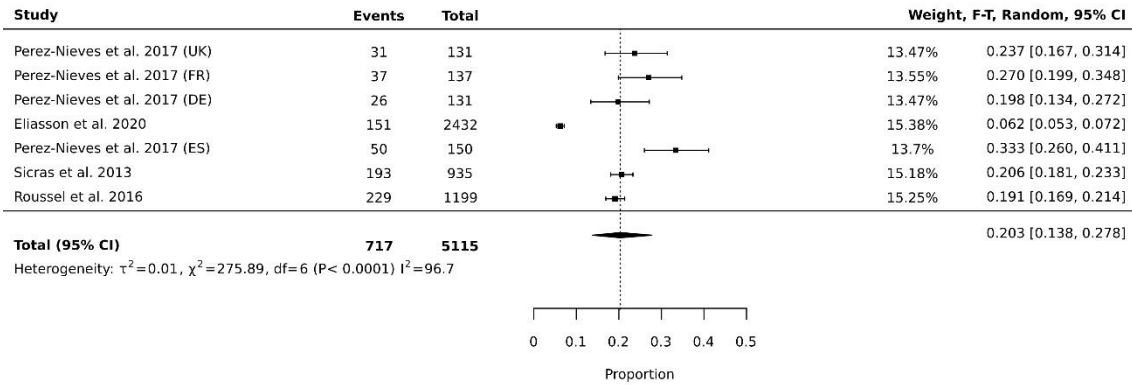


Figure S2: Forest plot for non-persistence within 6 months of basal insulin treatment (register-based data only)

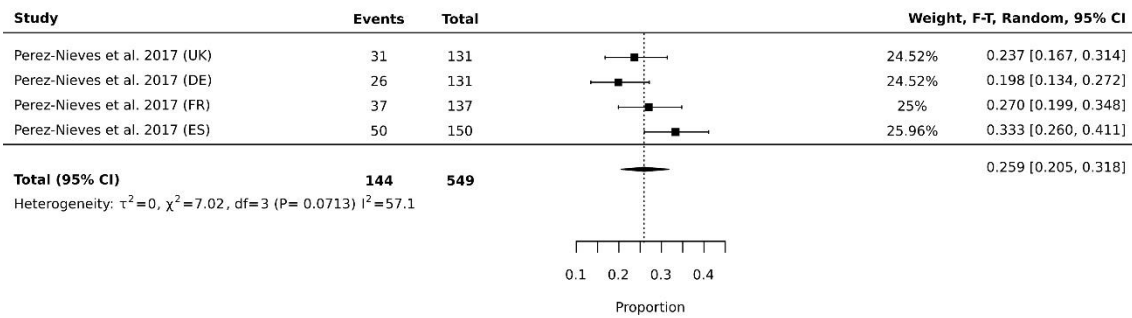


Figure S3: Forest plot for non-persistence within 6 months of basal insulin treatment (based on self-reported data only)

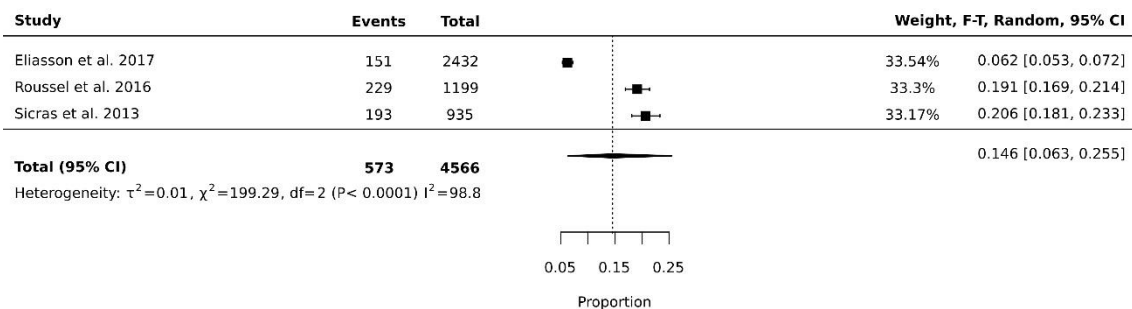


Figure S4: Forest plot for non-persistence within 12 months of basal insulin treatment

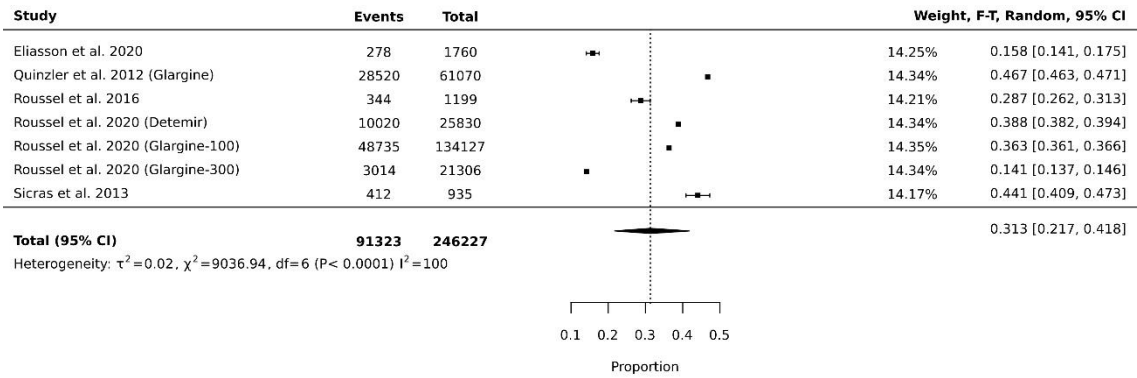


Figure S5: Forest plot for non-persistence within 12 months of basal insuling treatment (excluding NPH)

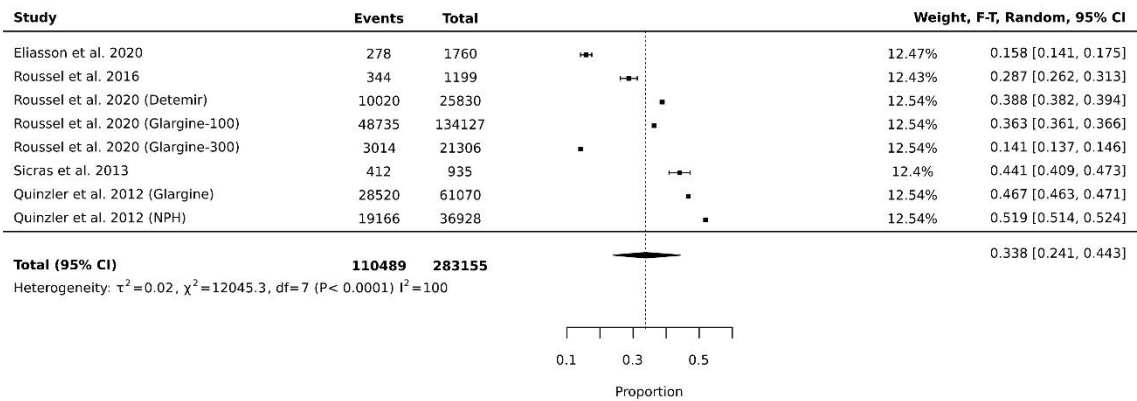


Figure S6: Forest plot for non-persistence within 18 months of basal insulin treatment

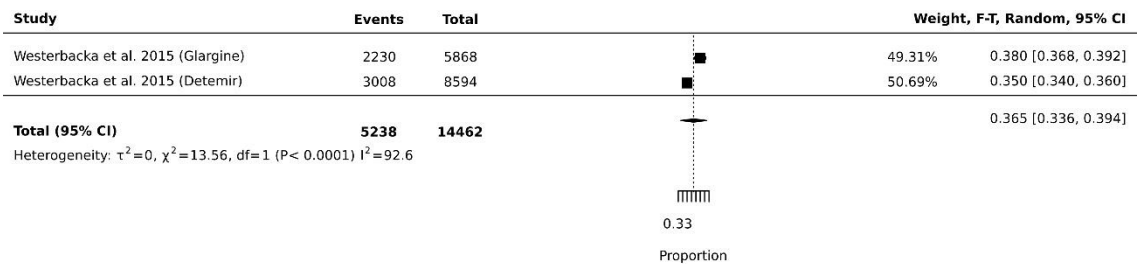


Figure S7: Forest plot for non-persistence within 6 months of basal insulin treatment (excluding Sicras et al. 2013)

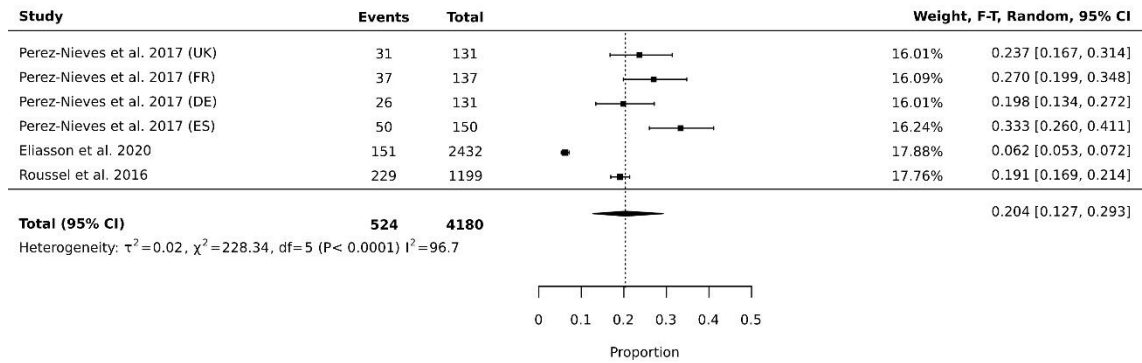


Figure S8: Forest plot for non-persistence within 12 months of basal insulin treatment (excluding Sicras et al. 2013)

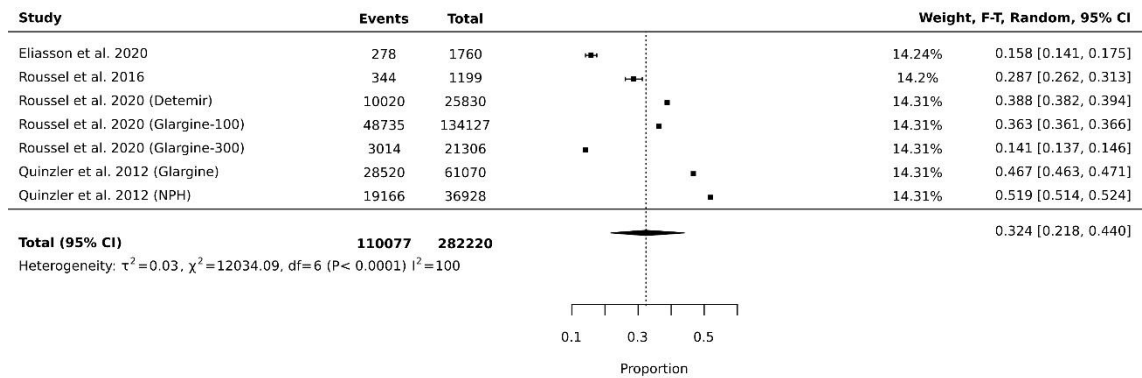


Figure S9: Forest plot for adherence of basal insulin treatment (MPR >80%)

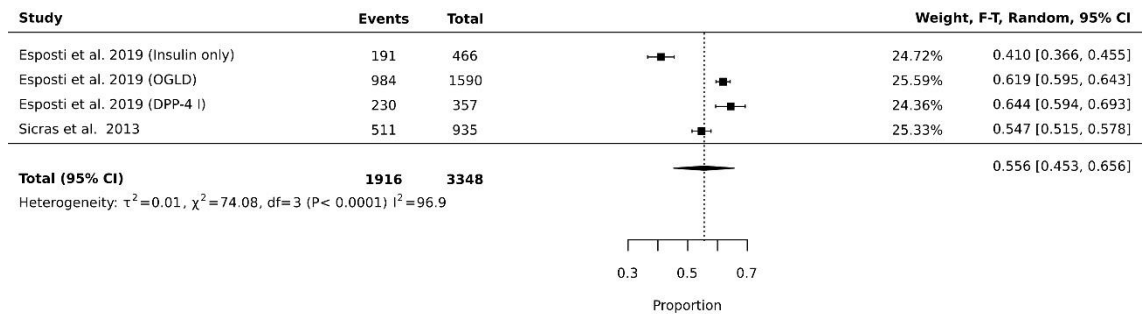


Figure S10: Forest plot for adherence of basal insulin treatment measured by MPR >80% (excluding Sicras et al. 2013)

