

**Preclinical imaging of Kallikrein related peptidase 2, hK2, in prostate cancer with a radiolabelled monoclonal antibody, 11B6**

Oskar Vilhelmsson Timmermand<sup>1</sup>, David Ulmert<sup>2</sup>, Susan Evans-Axelsson<sup>3</sup>, Kim Pettersson<sup>4</sup>, Anders Bjartell<sup>3</sup>, Hans Lilja<sup>2,5,6,7</sup>, Sven-Erik Strand<sup>1,8</sup>, Thuy A. Tran<sup>8</sup>.

<sup>1</sup>Dept. of Medical Radiation Physics, Barngatan 2:1, Lund University, S-211 85, Lund, Sweden.

<sup>2</sup>Department of Surgery (Urology), Memorial Sloan-Kettering Cancer Center, 1275 *York Avenue*, New York, NY 10065, USA.

<sup>3</sup>Dept. of Clin. Sciences, Div. Urological Cancers, Jan Waldenströms gata 5, Lund University, S-205 02, Malmö, Sweden

<sup>4</sup>Dept. of Biochemistry and Food Chemistry/Biotechnology, Tykistökatu 6A BioCity, University of Turku, 205 20 Turku 52, Turku, Finland.

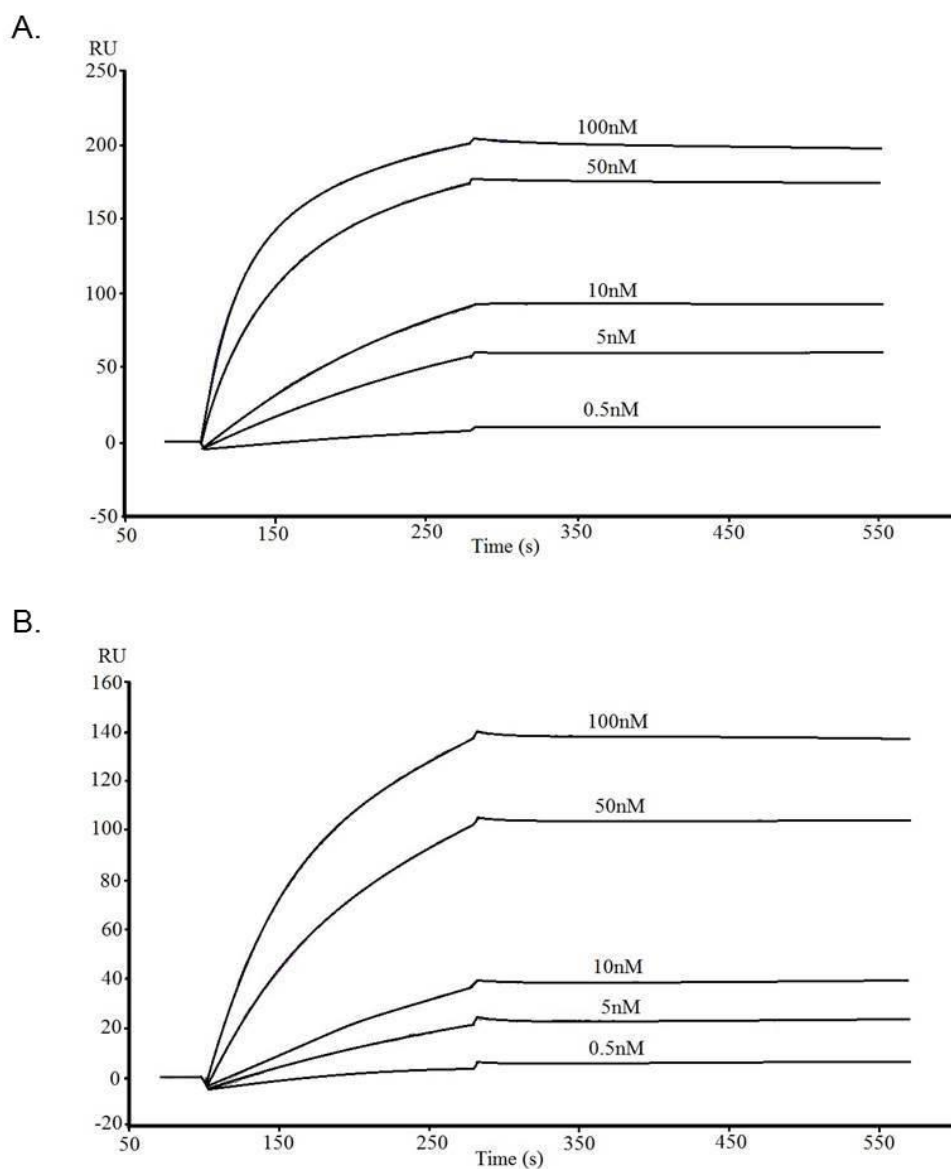
<sup>5</sup>Department of Laboratory Medicine and Medicine (GU Oncology), Memorial Sloan-Kettering Cancer Center, 1250 York Avenue, New York, NY 10065, USA.

<sup>6</sup>Nuffield Department of Surgical Sciences, University of Oxford, Oxford, United Kingdom.

<sup>7</sup>Department of Laboratory Medicine, Lund University, University Hospital UMAS, Malmö, Sweden

<sup>8</sup>Lund University Bioimaging Center, Lund University, BMC, Klinikgatan 32, S-222 42, Lund, Sweden

**SUPPLEMENTARY DATA**



	$k_a$ (1/Ms) ( $10^3$ )	$k_d$ (1/s) ( $10^{-3}$ )	$K_D$ (pM)
A. 11B6	$3.77 \pm 0.06$	$1.94 \pm 0.08$	$51.2 \pm 21.5$
B. DTPA-11B6	$1.52 \pm 0.11$	<1	$66.2 \pm 4.63$

**Figure S1. Surface Plasmon Resonance**

The binding kinetics of 11B6 and DTPA-11B6 analyzed by a Biacore 2000 Sensorgram of A. 11B6 to hK2, before conjugation and B. DTPA-11B6 to hK2, after conjugation.  $k_a$ ,  $k_d$  and  $K_D$  for 11B6 and DTPA-11B6 is displayed below the graphs.