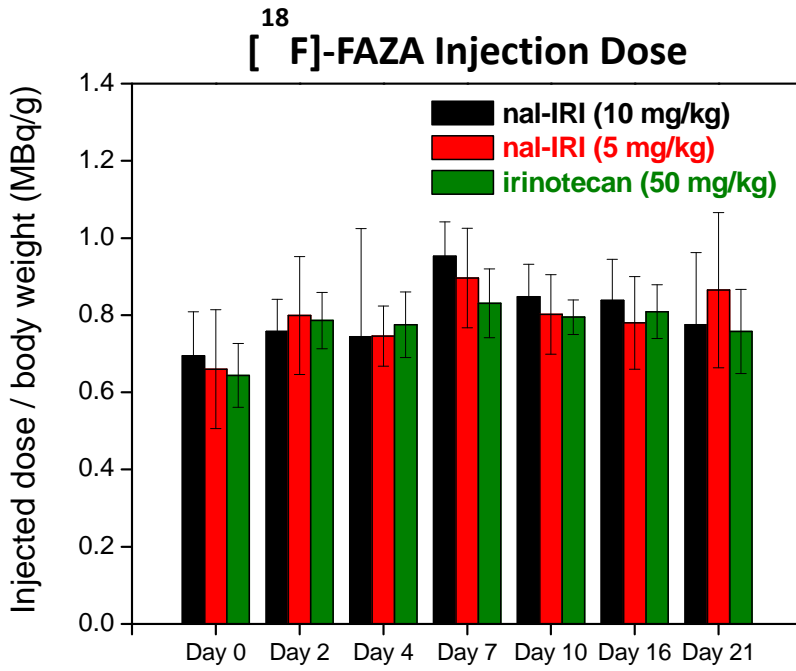
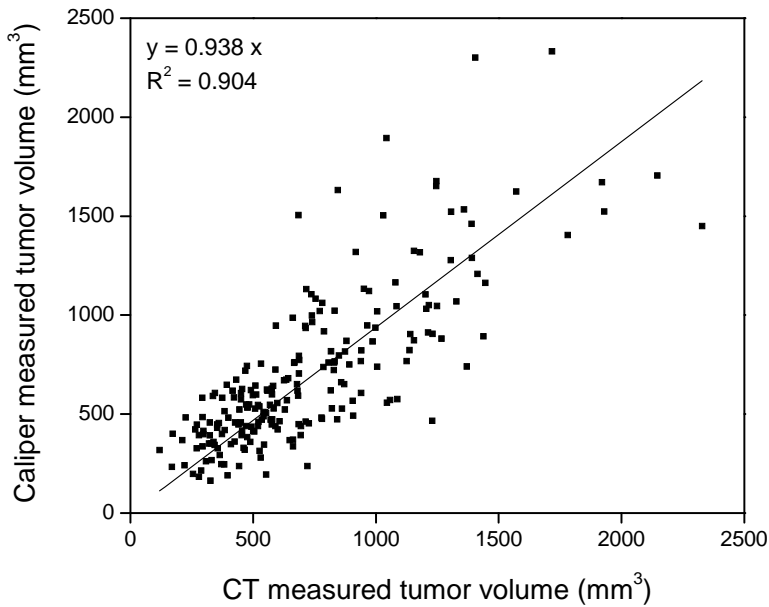


Suppl. Figure S1. Mean FAZA administration dose (MBq/g) calculated for animals belonging to each treatment group over 7 imaging sessions.



Suppl. Figure S2. Tumor volume correlation between measurements performed using caliper and CT.



Suppl. Figure S3. Longitudinal muscle FAZA uptake (%ID/g) measured from the CT data set over a 21-day period following the first treatment dose administration (day 0). Each data point (except for day 21, transparently masked in grey) represents the mean \pm standard deviation obtained from 5 animals.

