

ESM Figure 1

Alexander S. G. O'Neill^{1,2}, Samantha Y.A. Terry¹, Kathryn Brown³, Lucy Meader³, Andrew M.S. Wong⁴, Jonathan D. Cooper⁴, Paul R. Crocker^{4,5}, Wilson Wong³, Gregory E. D. Mullen^{1,3*}

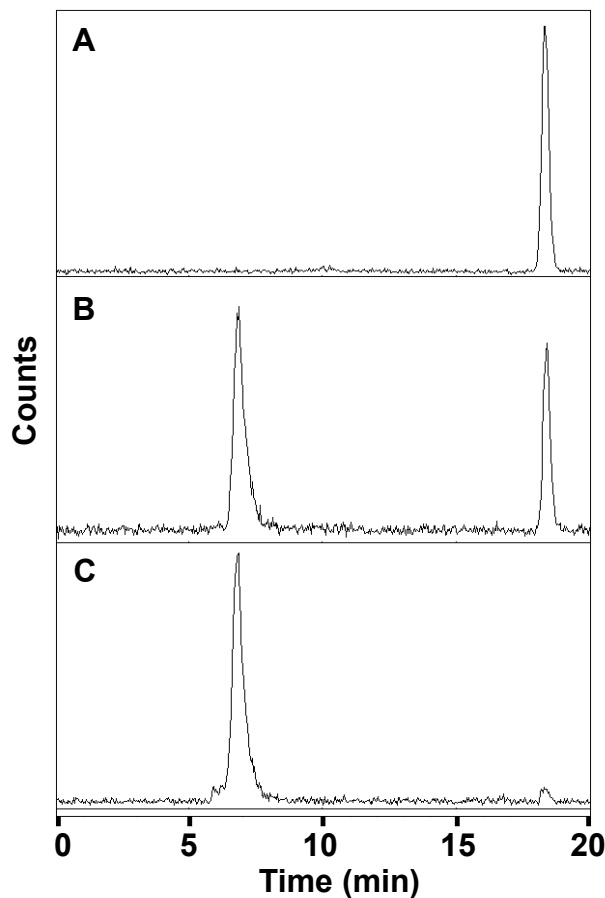
¹Department of Imaging Chemistry and Biology, Division of Imaging Sciences and Biomedical Engineering, King's College London, St. Thomas' Hospital, London, SE1 7EH, UK

²Division of Medical Sciences, University of Oxford, John Radcliffe Hospital, Oxford, OX3 9DU

³MRC Centre for Transplantation, King's College London, Guy's Hospital, London, UK

⁴Pediatric Storage Disorders Laboratory, Department of Neuroscience and Centre for the Cellular Basis of Behaviour, King's College London, London, UK

⁵Division of Cell Signalling and Immunology, College of Life Sciences, University of Dundee, Dundee, UK



SUPPLEMENTAL FIGURE 1

Serum stability of ^{99m}Tc-SER-4. ^{99m}Tc-SER-4 was incubated in the presence of phosphate-buffered saline (B) or serum (C) for 20 hr at 37°C then injected into SEC radioHPLC system. Percentage bound was assessed by comparison of bound activity (integral of 8 min 25 sec peak) to that of free activity (integral of 17 min 45 sec peak). ^{99m}TcO₄ is included as a control (A).