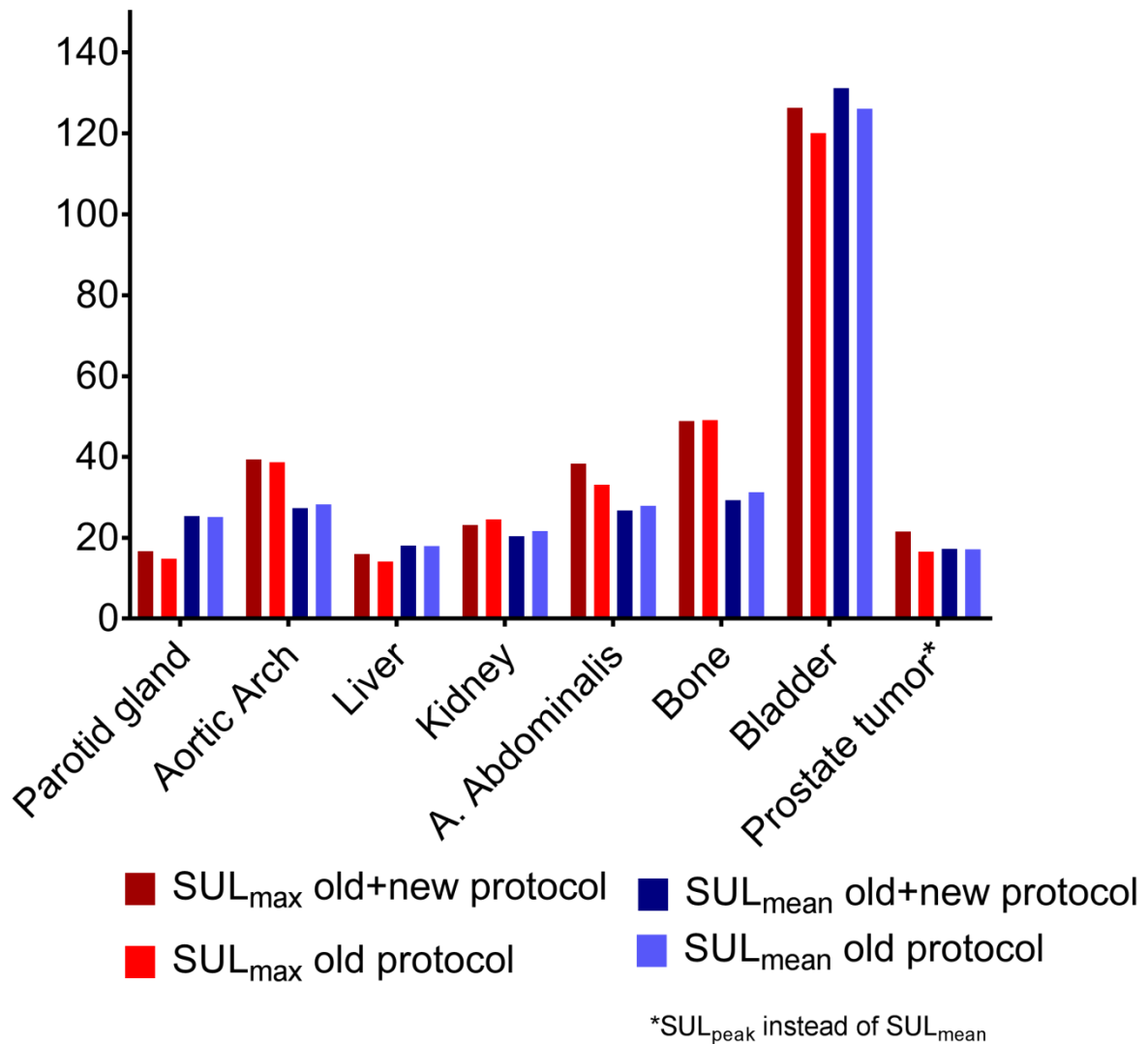


Repeatability Coefficient

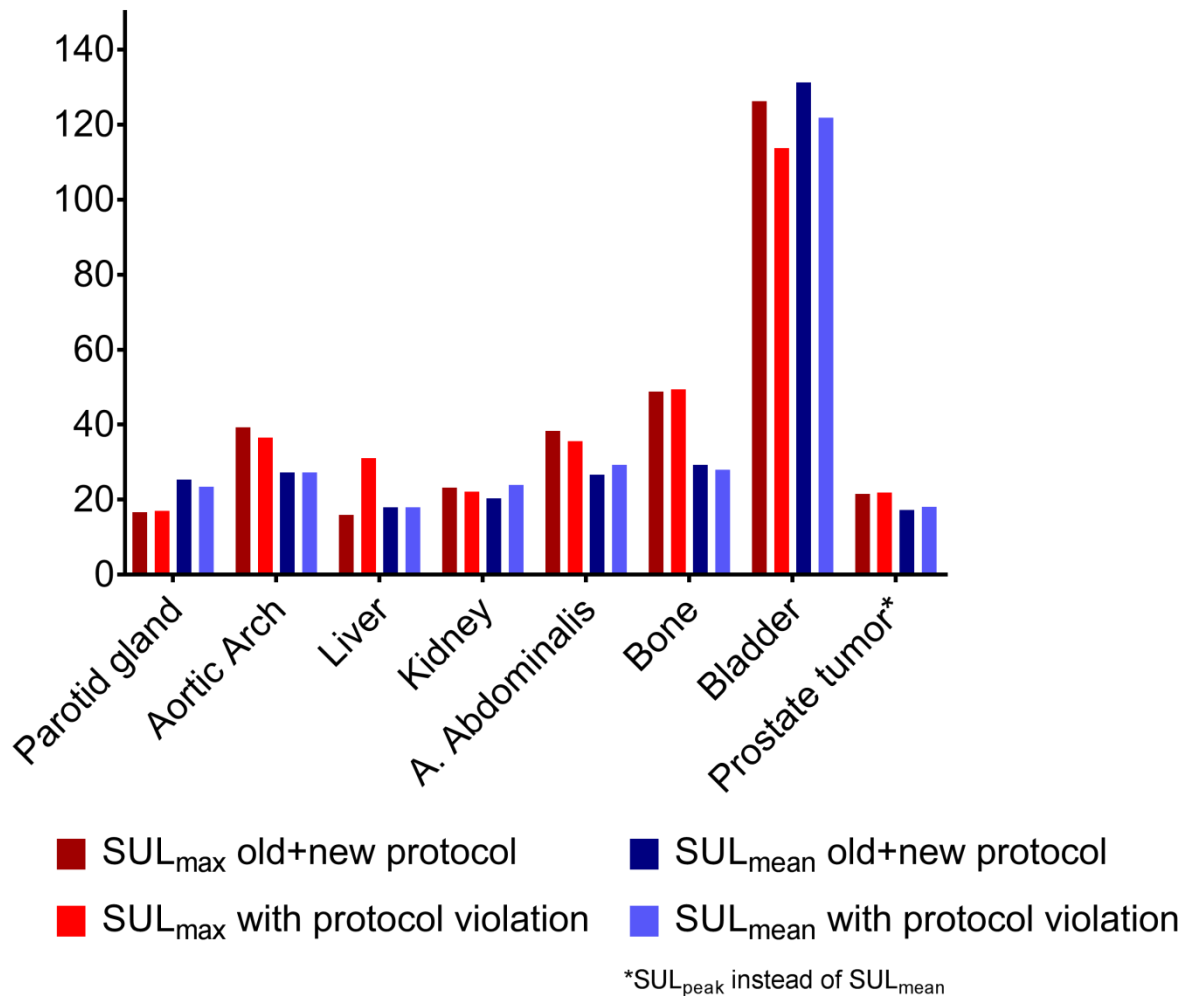
New (150MBq) and old (100MBq) acquisition protocol



Supplementary Figure 1: Influence of the new protocol (150MBq & 4.5min/bp) on the RC_{mean} and RC_{max} , as compared to the old protocol (without protocol violations). Note that the value of the prostate is displayed as SUL_{peak} instead of SUL_{mean} .

Repeatability Coefficient

Influence of acquisition protocol violation



Supplementary Figure 2: The influence of the protocol violations (>10% difference in administered dose and >5min difference in tracer uptake time) on the RC_{mean} and RC_{max} were investigated by comparing the RC of the old and new protocol combined to the RC of the old+new protocol with the protocol violations included. Note that the value of the prostate is displayed as SUL_{peak} instead of SUL_{mean}. Note that the large difference in the SUL_{max} of the liver is caused by 1 patient, which difference between the scans is very large due to a noisy scan, the RC without this outlier is 18%, more close to the RC without protocol violation (RC 16%).