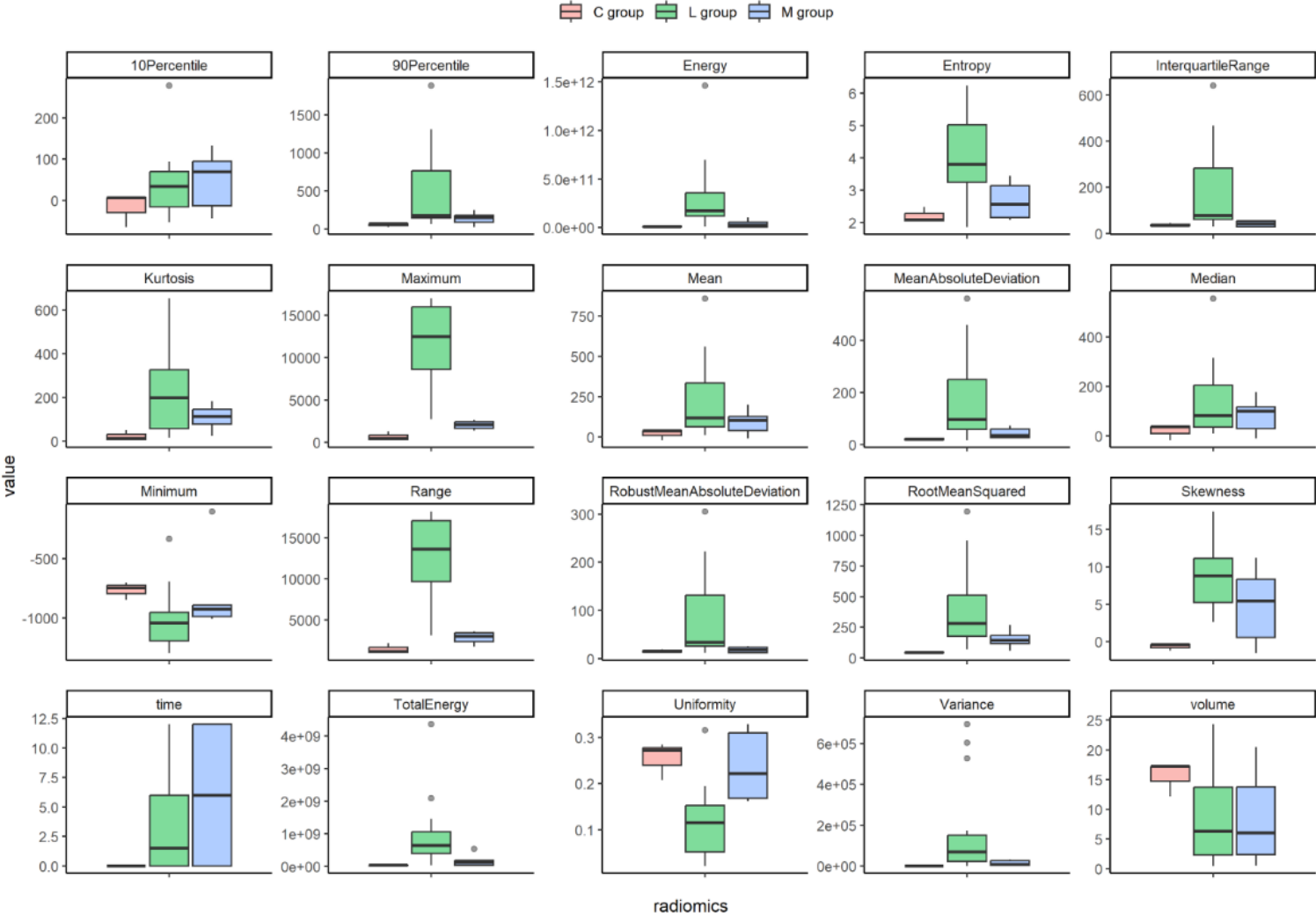
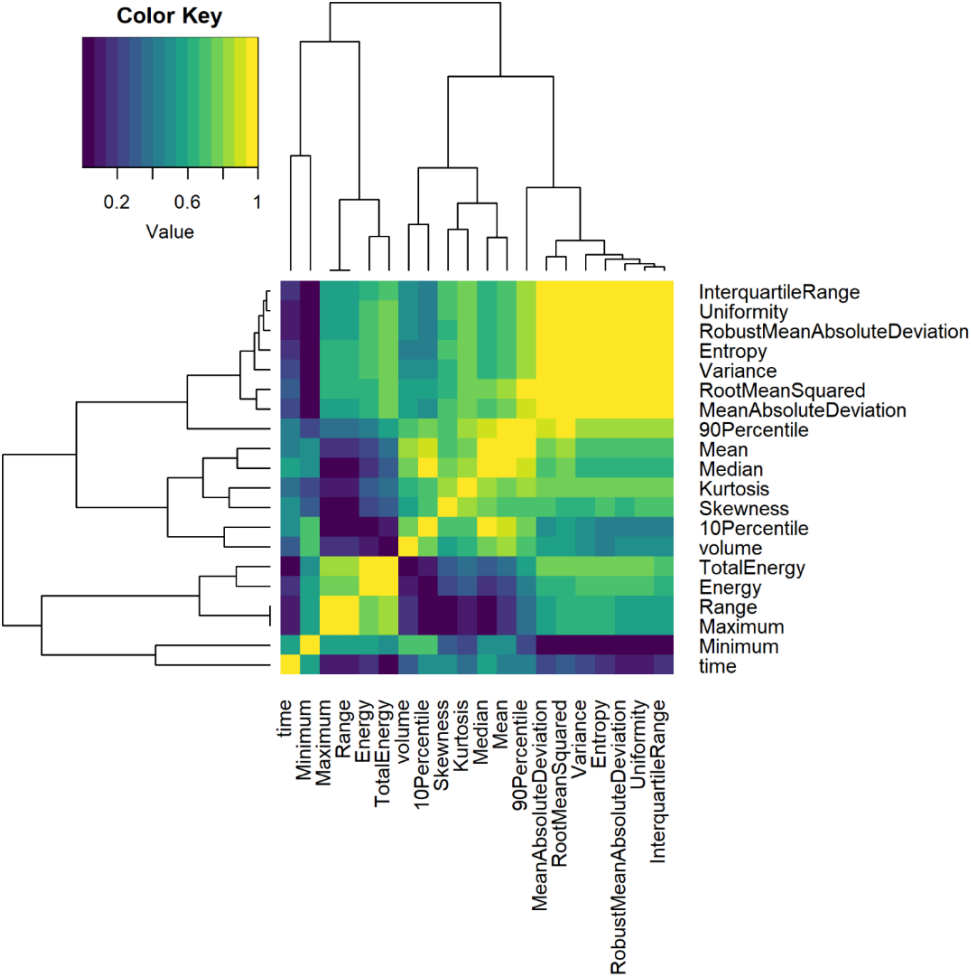


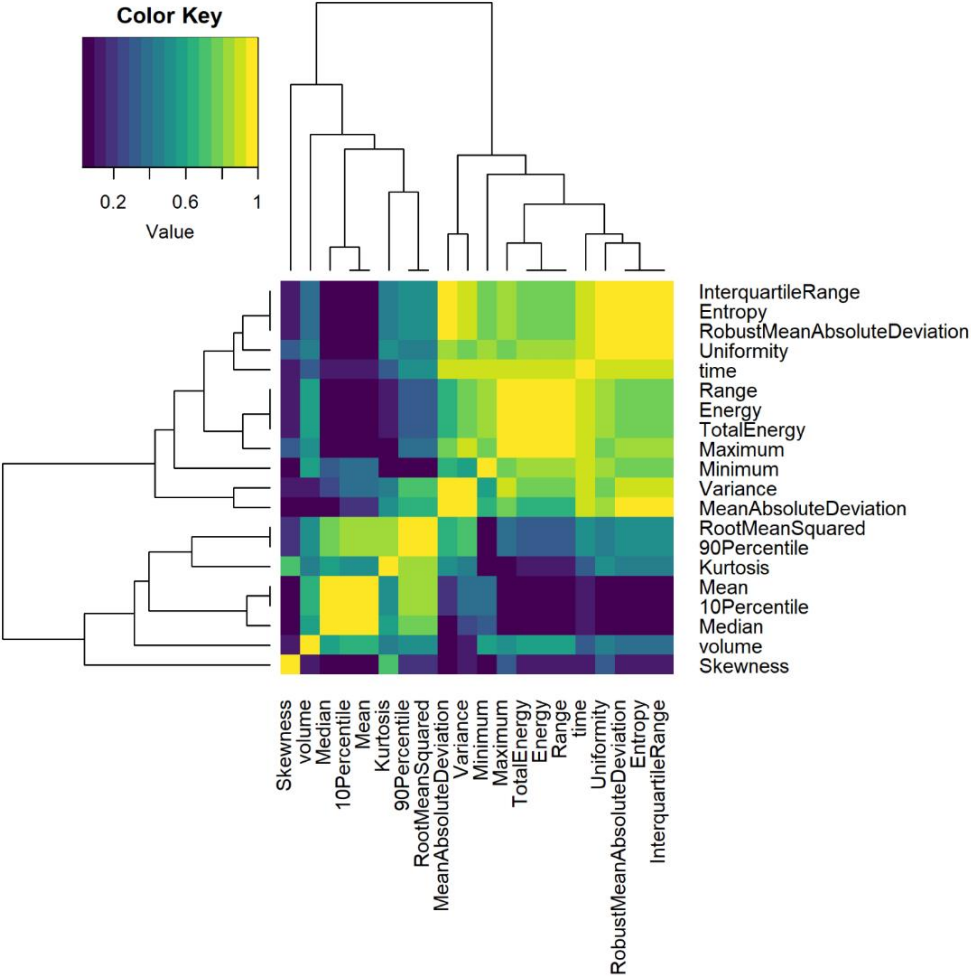
Supplemental figure 1 : Radiomics boxplots for C group (n=3, no injection), L group (n=14, Lipiodol® ultra-fluid), M group (n=6, microspheres). Radiomics features calculated in the tumor with SlicerRadiomics extension of 3DSlicer.



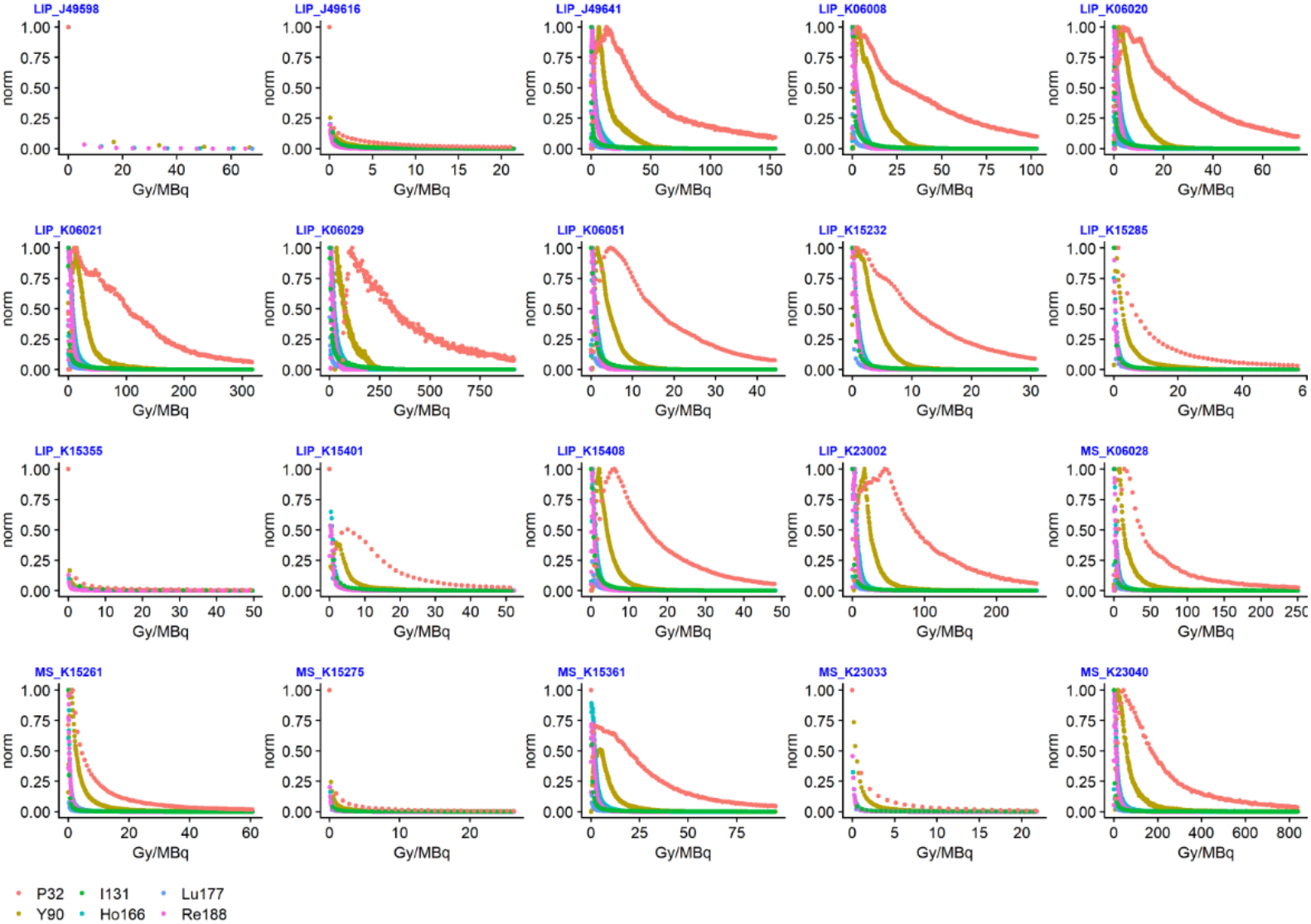
Supplemental figure 2: Correlation map for L group (n=14, Lipiodol® ultra-fluid). Radiomics features calculated in the tumor with SlicerRadiomics extension of 3DSlicer.



Supplemental figure 3: Correlation map for M group (n=6, microspheres). Radiomics features calculated in the tumor with SlicerRadiomics extension of 3DSlicer.



Supplemental figure 4: Dose volume histograms in Gy/MBq for all tumors explanted.



Supplemental table 1: S/ λ values for the L and M groups and following radionuclides: ^{32}P , ^{90}Y , ^{131}I , ^{166}Ho , ^{177}Lu , ^{188}Re . Wilcoxon p-values were calculated for each radionuclide between the L and M groups, with the null hypothesis.

	<i>S/λ (Gy.MBq⁻¹)</i>					
	^{32}P	^{90}Y	^{131}I	^{166}Ho	^{177}Lu	^{188}Re
<i>LIP_J49598</i>	27.2	8.38	3.93	1.96	2.63	1.55
<i>LIP_J49616</i>	8.60	2.12	1.36	0.670	0.85	0.476
<i>LIP_J49641</i>	61.8	14.3	11.1	4.86	7.10	3.35
<i>LIP_K06008</i>	41.3	10.5	6.34	3.24	3.81	2.32
<i>LIP_K06020</i>	29.7	6.88	5.18	2.33	3.29	1.61
<i>LIP_K06021</i>	127	29.1	23.4	10.0	15.27	6.88
<i>LIP_K06029</i>	368	85.6	63.7	28.9	41.15	20.0
<i>LIP_K06051</i>	17.8	4.20	2.96	1.39	1.83	0.97
<i>LIP_K15232</i>	12.4	3.02	1.95	0.963	1.19	0.68
<i>LIP_K15285</i>	22.9	5.51	4.02	1.78	2.44	1.26
<i>LIP_K15355</i>	19.9	5.08	3.29	1.56	2.07	1.12
<i>LIP_K15401</i>	20.9	5.12	3.48	1.62	2.06	1.15
<i>LIP_K15408</i>	19.3	4.52	3.30	1.51	2.09	1.05
<i>LIP_K23002</i>	102	24.0	16.9	7.98	10.87	5.56
<i>Mean \pm sd</i>	62.8 \pm 94	14.9 \pm 22	10.8 \pm 16	4.92 \pm 7.4	6.9 \pm 11	3.43 \pm 5.1
<i>MS_K06028</i>	100	23.9	17.3	7.87	11.3	5.49
<i>MS_K15261</i>	24.3	5.75	3.99	1.90	2.58	1.33
<i>MS_K15275</i>	10.5	2.43	1.83	0.823	1.20	0.57
<i>MS_K15361</i>	38.0	8.81	6.48	2.98	4.15	2.06
<i>MS_K23033</i>	8.70	2.10	1.41	0.676	0.922	0.477
<i>MS_K23040</i>	336	76.2	57.5	26.3	37.6	18.1
<i>Mean \pm sd</i>	86.3 \pm 127	19.9 \pm 29	14.7 \pm 22	6.75 \pm 9.9	9.6 \pm 14	4.67 \pm 6.8
<i>Wilcoxon p</i>	1.0	0.97	0.90	1.0	0.84	1.0