

## **A Retrospective Cohort Analysis of Treatment Patterns Over 1 Year in Patients with Psoriasis Treated with Ixekizumab or Guselkumab**

Andrew Blauvelt, MD, MBA<sup>1</sup>; Russel Burge, PhD<sup>2,3</sup>; Gaia Gallo, MD<sup>2</sup>; Bridget Charbonneau, PhD<sup>2</sup>; William Malatestinic, Pharm D<sup>2</sup>; Baojin Zhu, PhD<sup>2</sup>; Fangyu Wang, MS<sup>2</sup>; Benjamin Lockshin, MD<sup>4</sup>

1. Oregon Medical Research Center, Portland, Oregon, US
2. Eli Lilly and Company, Indianapolis, Indiana, US
3. University of Cincinnati, Cincinnati, Ohio, US
4. DermAssociates, Silver Spring, Maryland, US

### **Corresponding author:**

Dr. Andrew Blauvelt

Oregon Medical Research Center

9495 SW Locust St., Suite G

Portland, OR 97223

Email: [ablauvelt@oregonmedicalresearch.com](mailto:ablauvelt@oregonmedicalresearch.com)

**Supplemental Table 1. Baseline demographics before and after weighting for ixekizumab vs. guselkumab for psoriasis patients with 6-month's pre-index period and ≥6-month follow-up period.**

	Before Weighting			After Weighting		
	Ixekizumab (N=744)	Guselkumab (N=817)	SMD <sup>a</sup>	Ixekizumab	Guselkumab	SMD <sup>a</sup>
<b>Age as of Index Date, mean ± SD</b>	48.5 ± 11.8	48.3 ± 12.5	0.014	48.4 ± 11.8	48.4 ± 12.4	0.001
<b>Male, n (%)</b>	51.3	54.1	0.055	52.9	52.6	0.006
<b>Health Plan Type,<sup>b</sup> %</b>			0.201			0.016
Preferred Provider Organization	57.4	58.9		58.2	58.1	
Consumer-Driven Health Plan	14.9	11.8		13.1	13.1	
High Deductible Health Plan	9.5	9.9		9.7	9.7	
Health Maintenance Organization	7.4	8.2		7.8	7.8	
Non-Capitated Point-of-Service	4.6	5.1		4.9	4.9	
Other <sup>b</sup>	6.2	6.1		6.3	6.3	
<b>CCI Score, mean ± SD</b>	0.60 ± 1.83	0.52 ± 1.55	0.048	0.56 ± 1.72	0.59 ± 1.75	0.016
<b>Pre-index Biologics Use, %</b>			0.223			0.006
1	58.6	48.6		52.6	52.9	
≥2	1.3	0.9		1.1	1.0	
Naive	40.1	51.0		46.3	46.1	
<b>Pre-index Systemic Therapy or Topical Agent Use, %</b>			0.044			0.003
1	31.3	33.3		32.2	32.2	
≥2	32.5	31.1		31.6	31.8	

Naive	36.2	35.6		36.2	36.1	
<b>Pre-index Phototherapy Use, %</b>			0.039			0.012
1	3.2	3.4		3.5	3.3	
≥2	0.9	0.6		0.8	0.9	
Naïve	95.8	96.0		95.7	95.8	
<b>Comorbid Conditions, mean ± SD</b>						
Anxiety	0.10 ± 0.30	0.12 ± 0.33	0.074	0.11 ± 0.31	0.11 ± 0.31	0.001
Hyperlipidemia	0.25 ± 0.43	0.22 ± 0.41	0.073	0.23 ± 0.42	0.23 ± 0.42	0.004
Hypertension	0.28 ± 0.45	0.29 ± 0.45	0.027	0.28 ± 0.45	0.28 ± 0.45	0.002
Sleep Apnea	0.10 ± 0.30	0.10 ± 0.30	0.010	0.10 ± 0.30	0.10 ± 0.30	0.002
Obesity	0.22 ± 0.41	0.17 ± 0.38	0.121	0.19 ± 0.39	0.19 ± 0.40	0.004
Coronary Heart Disease	0.04 ± 0.19	0.04 ± 0.21	0.025	0.04 ± 0.20	0.04 ± 0.20	0.002
Osteoarthritis	0.07 ± 0.26	0.07 ± 0.25	0.020	0.07 ± 0.25	0.07 ± 0.25	0.002
Peripheral Vascular Disease	0.01 ± 0.09	0.02 ± 0.13	0.081	0.01 ± 0.12	0.01 ± 0.11	0.011
Depression	0.08 ± 0.27	0.11 ± 0.31	0.105	0.09 ± 0.29	0.09 ± 0.29	0.003

<sup>a</sup>A standardized difference of <0.1 is considered well balanced.

<sup>b</sup>Other category combines patients from: Cap or Part Cap POS, Comprehensive, Exclusive Provider Organization, and Unknown/Missing.

Abbreviations: CCI, Charlson Comorbidity Index; SD, standard deviation; SMD, standardized mean difference.

**Supplemental Table 2. Total days and PDC on index drug, on monotherapy, and with concomitant therapy for ixekizumab vs. guselkumab.** Data shown for patients with 6-month's pre-index period and ≥6 months of follow-up.

	Ixekizumab (N=744)	Guselkumab (N=817)	p-value
<b>Covered by Index Drug</b>			
Days			
mean ± SD	328 ± 201	313 ± 171	
median	323	293	
PDC			
mean ± SD	0.59 ± 0.30	0.57 ± 0.27	0.136
median	0.68	0.58	
Monotherapy of Index Drug			
Days			
mean ± SD	306 ± 198	292 ± 171	
median	301	274	
PDC			
mean ± SD	0.55 ± 0.30	0.53 ± 0.27	0.149
median	0.61	0.54	
Index Drug with Concomitant Therapy <sup>a</sup>			
Days			
mean ± SD	21 ± 46	21 ± 46	
median	0	3	

PDC

mean ± SD

0.04 ± 0.09

0.04 ± 0.08

0.699

median

0.0

0.01

---

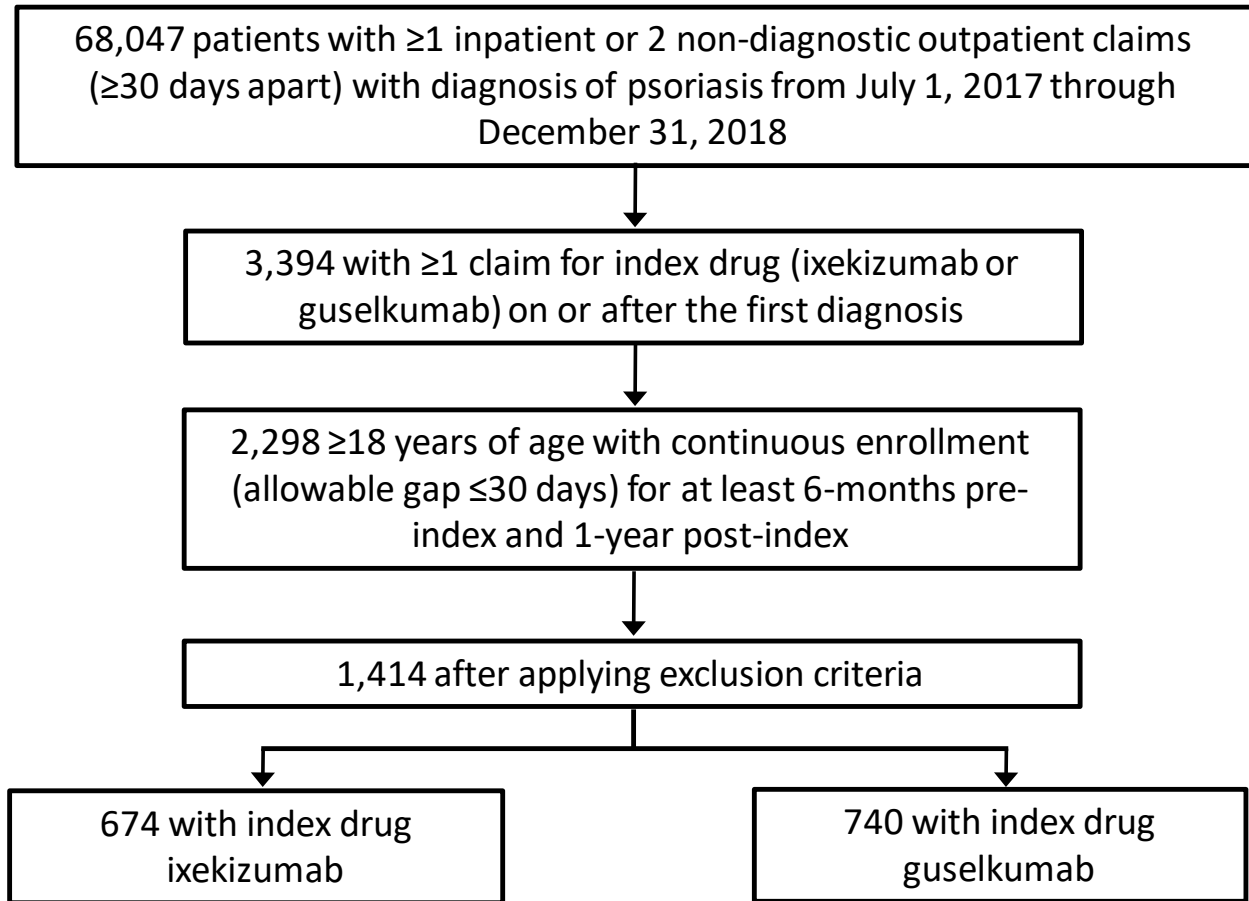
All results based on inverse probability of treatment weighting (IPTW) data. <sup>a</sup>Biologic, systemic, or phototherapy. Abbreviations: SD, standard deviation; PDC, proportion of days covered.

**Supplemental Table 3. Discontinuation (90-day gap) or switch of index drug, observed, and weighted data.**

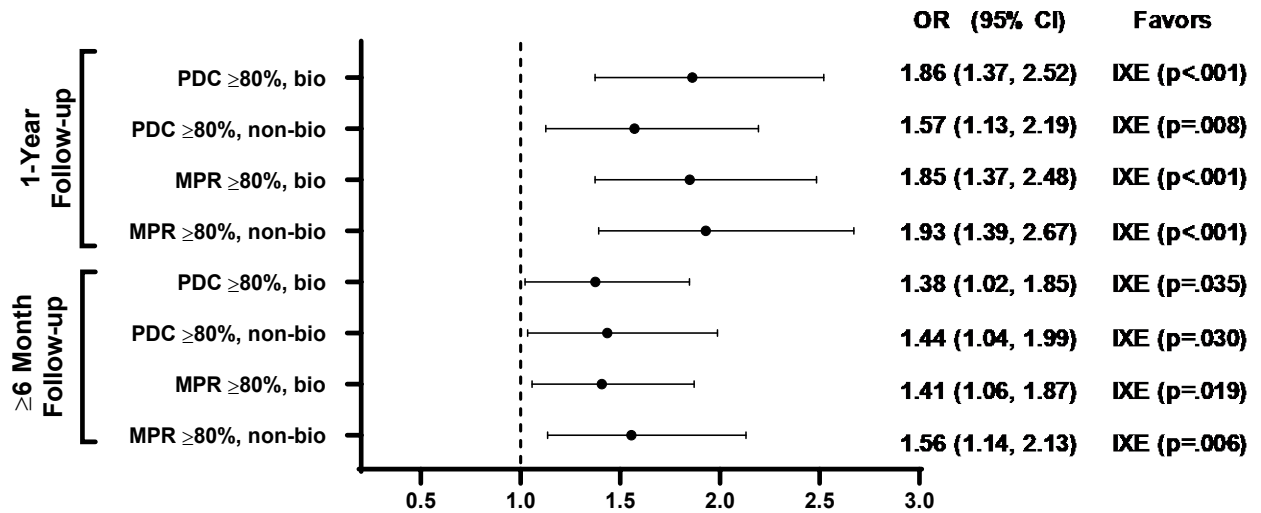
	Observed data, N (%)		Weighted data, %	
	Ixekizumab (N=674)	Guselkumab (N=740)	Ixekizumab	Guselkumab
<b>1-year Follow-up Analysis</b>				
Patients who discontinued the index drug <sup>a</sup>	241 (35.8)	264 (35.7)	35.2	36.2
Patients who reinitiated index drug after the allowable gap	31 (4.6)	64 (8.7)	4.7	8.4
Patients who switched from the index drug within the allowable gap	125 (18.6)	88 (11.9)	17.6	12.9
Patients who neither switched therapy within the gap nor reinitiated the index drug after the gap	85 (12.6)	112 (15.1)	13.0	14.9
<b>≥6-month Follow-up Analysis</b>				
Patients who discontinued the index drug <sup>a</sup>	365 (49.1)	391 (47.9)	48.8	48.5
Patients who reinitiated index drug after the allowable gap	58 (7.8)	118 (14.4)	8.2	14.1
Patients who switched from the index drug within the allowable gap	186 (25.0)	130 (15.9)	24.1	16.9
Patients who neither switched therapy within the gap nor reinitiated the index drug after the gap	121 (16.3)	143 (17.5)	16.5	17.5

<sup>a</sup>The discontinuation total includes those who discontinued and reinitiated, discontinued and switched, and who discontinued index drug and did not reinitiate index drug nor switch to a different drug within 90 days.

**Supplemental Figure 1. MarketScan Database Screening and Selection and Patient Flow.**



**Supplemental Figure 2. Odds of high medication adherence for ixekizumab vs. guselkumab by biologic experience and non-biologic experience.**



Abbreviations: bio, biologic experienced; CI, confidence interval; IXE, ixekizumab; MPR, medication possession ratio; non-bio, non-biologic experienced; OR, odds ratio; PDC, percent of days covered.