

1 **Long-Term Health-Related Quality of Life in Patients with Plaque Psoriasis**
2 **Treated with Certolizumab Pegol: Three-Year Results from Two**
3 **Randomised Phase 3 Studies (CIMPASI-1 and CIMPASI-2)**

4 **SUPPORTING INFORMATION**

5 Paolo Gisondi,¹ Alice B. Gottlieb,² Boni Elewski,³ Matthias Augustin,⁴ Sandy McBride,⁵
6 Tsen-Fang Tsai,⁶ Christine de la Loge,⁷ Frederik Fierens,⁸ Jose M. Lopez Pinto,⁹ Nicola
7 Tilt,¹⁰ Mark Lebwohl²

8 *¹University of Verona, Verona, Italy; ²Department of Dermatology, Icahn School of*
9 *Medicine at Mount Sinai, New York, New York, USA; ³Department of Dermatology,*
10 *University Hospitals of Cleveland, Case Western Reserve University, Cleveland, Ohio,*
11 *USA; ⁴Institute for Health Services Research in Dermatology and Nursing (IVDP),*
12 *University Medical Center Hamburg-Eppendorf (UKE), Hamburg, Germany; ⁵Royal*
13 *Free London NHS Foundation Trust, London, UK; ⁶Department of Dermatology,*
14 *National Taiwan University Hospital and National Taiwan University College of*
15 *Medicine, Taipei, Taiwan; ⁷PCOM Analytics, Avallon, France; ⁸UCB Pharma, Brussels,*
16 *Belgium; ⁹UCB Pharma, Madrid, Spain; ¹⁰UCB Pharma, Slough, UK*

17 **Correspondence to:** Mark Lebwohl, lebwohl@aol.com
18 (ORCID: 0000-0002-4705-5303)

19
20

1 SUPPLEMENTARY TABLES AND FIGURES

2 Table S1. Patient-reported outcomes to Week 144 (LOCF)

	CZP 200 mg Q2W (N=183)				CZP 400 mg Q2W (N=173)				All CZP (N=356)				Placebo (N=97)	
	Baseline	Week 16	Week 48	Week 144	Baseline	Week 16	Week 48	Week 144	Baseline	Week 16	Week 48	Week 144	Baseline	Week 16
DLQI scores, mean ± SD														
Total DLQI	14.3 ± 7.4	4.3 ± 5.7	3.9 ± 5.4	4.3 ± 5.8	13.7 ± 6.9	3.9 ± 5.8	2.8 ± 5.2	4.1 ± 6.3	14.0 ± 7.1	4.1 ± 5.7	3.4 ± 5.3	4.2 ± 6.0	13.4 ± 7.8	10.3 ± 6.8
Symptoms and Feelings	4.2 ± 1.5	1.4 ± 1.4	1.4 ± 1.4	1.5 ± 1.5	4.1 ± 1.4	1.3 ± 1.4	1.1 ± 1.4	1.4 ± 1.6	4.2 ± 1.4	1.4 ± 1.4	1.2 ± 1.4	1.5 ± 1.6	4.0 ± 1.5	3.2 ± 1.6
Leisure	2.7 ± 2.0	0.7 ± 1.3	0.6 ± 1.2	0.6 ± 1.3	2.4 ± 1.9	0.6 ± 1.2	0.5 ± 1.3	0.7 ± 1.5	2.5 ± 2.0	0.6 ± 1.2	0.6 ± 1.3	0.7 ± 1.4	2.5 ± 2.2	1.7 ± 1.7
Daily Activities	3.2 ± 1.9	0.9 ± 1.3	0.8 ± 1.2	0.8 ± 1.3	3.2 ± 1.7	0.8 ± 1.4	0.6 ± 1.3	0.9 ± 1.6	3.2 ± 1.8	0.8 ± 1.3	0.7 ± 1.3	0.8 ± 1.5	3.1 ± 1.8	2.3 ± 1.6
Work and School	0.9 ± 1.0	0.2 ± 0.6	0.2 ± 0.4	0.2 ± 0.6	0.9 ± 1.0	0.2 ± 0.7	0.2 ± 0.6	0.2 ± 0.7	0.9 ± 1.0	0.2 ± 0.6	0.2 ± 0.5	0.2 ± 0.6	0.9 ± 1.1	0.6 ± 0.9
Personal Relationships	2.0 ± 1.9	0.7 ± 1.3	0.5 ± 1.1	0.6 ± 1.2	1.9 ± 1.9	0.6 ± 1.4	0.4 ± 1.2	0.6 ± 1.4	1.9 ± 1.9	0.7 ± 1.3	0.5 ± 1.2	0.6 ± 1.3	1.8 ± 2.1	1.6 ± 1.8
Treatment	1.3 ± 1.1	0.4 ± 0.7	0.3 ± 0.6	0.4 ± 0.7	1.2 ± 1.1	0.3 ± 0.7	0.2 ± 0.6	0.4 ± 0.8	1.3 ± 1.1	0.4 ± 0.7	0.3 ± 0.6	0.4 ± 0.7	1.2 ± 1.0	0.9 ± 0.9
EQ-5D-3L														
EQ-5D-3L score of 1, n (%)														
Mobility	123 (67.2)	152 (83.1)	153 (83.6)	144 (78.7)	125 (72.3)	143 (82.7)	142 (82.1)	135 (78.0)	248 (69.7)	295 (82.9)	295 (82.9)	279 (78.4)	73 (75.3)	70 (72.2)
Self-Care	165 (90.2)	171 (93.4)	170 (92.9)	169 (92.3)	153 (88.4)	163 (94.2)	163 (94.2)	161 (93.1)	318 (89.3)	334 (93.8)	333 (93.5)	330 (92.7)	91 (93.8)	89 (91.8)
Usual Activities	125 (68.3)	150 (82.0)	158 (86.3)	151 (82.5)	115 (66.5)	143 (82.7)	147 (85.0)	140 (80.9)	240 (67.4)	293 (82.3)	305 (85.7)	291 (81.7)	65 (67.0)	64 (66.0)
Pain/Discomfort	33 (18.0)	100 (54.6)	106 (57.9)	101 (55.2)	42 (24.3)	108 (62.4)	110 (63.6)	96 (55.5)	75 (21.1)	208 (58.4)	216 (60.7)	197 (55.3)	16 (16.5)	28 (28.9)
Anxiety/Depression	93 (50.8)	131 (71.6)	125 (68.3)	119 (65.0)	87 (50.3)	132 (76.3)	125 (72.3)	123 (71.1)	180 (50.6)	263 (73.9)	250 (70.2)	242 (68.0)	50 (51.5)	52 (53.6)
EQ VAS score, mean ± SD	65.9 ± 22.7	77.5 ± 18.0	78.6 ± 17.8	78.3 ± 17.6	66.1 ± 22.2	78.5 ± 17.2	81.5 ± 15.3	78.3 ± 17.0	66.0 ± 22.4	78.0 ± 17.6	80.0 ± 16.7	78.3 ± 17.3	66.2 ± 21.2	68.2 ± 20.2
SF-36 scores, mean ± SD														
Physical Functioning	47.7 ± 9.6	51.2 ± 8.5	51.6 ± 8.3	50.2 ± 9.3	49.1 ± 9.4	51.3 ± 9.7	51.6 ± 9.1	50.4 ± 9.8	48.4 ± 9.5	51.3 ± 9.1	51.6 ± 8.7	50.3 ± 9.5	48.5 ± 8.8	49.6 ± 9.1
Role Physical	46.7 ± 9.5	50.3 ± 7.9	50.4 ± 8.5	49.0 ± 9.5	47.3 ± 10.0	50.5 ± 8.9	51.0 ± 8.9	50.3 ± 9.0	47.0 ± 9.7	50.4 ± 8.4	50.7 ± 8.7	49.6 ± 9.3	47.1 ± 8.8	47.8 ± 8.5
Bodily Pain	45.3 ± 10.4	52.2 ± 10.0	52.2 ± 9.5	50.7 ± 10.2	46.6 ± 11.1	53.4 ± 10.2	53.5 ± 9.9	51.7 ± 10.8	45.9 ± 10.7	52.8 ± 10.1	52.8 ± 9.7	51.2 ± 10.5	45.5 ± 10.7	47.0 ± 10.3
General Health	47.1 ± 10.1	50.7 ± 9.6	49.7 ± 9.8	49.6 ± 10.3	47.5 ± 9.3	50.3 ± 9.9	51.0 ± 10.2	49.0 ± 10.2	47.3 ± 9.7	50.5 ± 9.7	50.3 ± 10.0	49.3 ± 10.3	46.4 ± 10.4	47.2 ± 10.4
Mental Health	46.8 ± 10.7	51.7 ± 9.6	51.3 ± 10.1	50.0 ± 10.8	46.3 ± 10.1	50.5 ± 9.9	51.1 ± 9.9	50.2 ± 10.5	46.5 ± 10.4	51.1 ± 9.8	51.2 ± 10.0	50.1 ± 10.6	44.9 ± 12.0	46.0 ± 11.8

Role Emotional	46.8 ± 10.4	50.3 ± 8.9	50.1 ± 9.1	49.5 ± 10.1	46.1 ± 10.8	49.8 ± 9.6	50.7 ± 9.0	49.7 ± 9.6	46.4 ± 10.6	50.1 ± 9.2	50.4 ± 9.0	49.6 ± 9.8	46.7 ± 10.3	47.3 ± 9.7
Social Functioning	45.4 ± 11.1	51.0 ± 8.9	50.5 ± 9.6	49.9 ± 9.8	45.1 ± 11.0	50.7 ± 9.2	51.6 ± 8.9	50.1 ± 10.0	45.2 ± 11.0	50.9 ± 9.1	51.1 ± 9.3	50.0 ± 9.9	45.0 ± 11.7	45.6 ± 10.8
Vitality	48.5 ± 9.8	53.0 ± 9.7	53.7 ± 9.8	52.8 ± 10.6	47.6 ± 10.0	51.9 ± 10.2	53.7 ± 10.3	52.3 ± 10.6	48.1 ± 9.9	52.5 ± 9.9	53.7 ± 10.0	52.5 ± 10.6	47.2 ± 9.7	47.8 ± 10.1
PCS	46.9 ± 9.3	51.2 ± 8.5	51.2 ± 8.5	50.1 ± 9.6	48.5 ± 9.2	51.9 ± 9.6	52.1 ± 9.0	50.6 ± 9.4	47.7 ± 9.3	51.5 ± 9.1	51.7 ± 8.7	50.3 ± 9.5	47.7 ± 8.9	48.8 ± 9.3
MCS	46.9 ± 11.0	51.4 ± 9.8	51.1 ± 10.3	50.4 ± 11.1	45.5 ± 10.6	50.1 ± 10.2	51.3 ± 9.8	50.2 ± 10.9	46.2 ± 10.8	50.8 ± 10.0	51.2 ± 10.1	50.3 ± 11.0	45.3 ± 12.6	45.9 ± 12.3
WPAI scores, mean ± SD														
Absenteeism ^a	4.5 ± 16.4	5.2 ± 14.5	5.3 ± 14.7	5.2 ± 15.8	3.4 ± 13.9	8.1 ± 21.0	4.3 ± 14.9	7.6 ± 21.6	4.0 ± 15.2	6.7 ± 18.0	4.8 ± 14.8	6.3 ± 18.9	3.9 ± 10.1	6.5 ± 20.2
Presenteeism ^a	19.6 ± 25.6	10.0 ± 17.6	9.4 ± 19.0	9.2 ± 17.5	19.6 ± 22.7	6.9 ± 14.4	5.6 ± 15.0	10.0 ± 19.6	19.6 ± 24.2	8.4 ± 16.2	7.5 ± 17.2	9.6 ± 18.5	18.8 ± 22.2	19.1 ± 23.7
Overall Work Impairment ^a	23.1 ± 29.2	14.1 ± 22.3	13.0 ± 22.7	13.3 ± 22.3	22.1 ± 25.5	13.3 ± 24.7	9.2 ± 20.6	16.5 ± 27.4	22.6 ± 27.4	13.7 ± 23.5	11.1 ± 21.8	14.9 ± 25.0	20.8 ± 24.4	25.0 ± 28.2
Overall Activity Impairment	33.0 ± 30.6	11.9 ± 19.3	10.7 ± 19.1	12.0 ± 20.0	33.6 ± 28.8	9.8 ± 19.9	8.3 ± 18.3	13.4 ± 24.0	33.3 ± 29.7	10.9 ± 19.6	9.5 ± 18.7	12.7 ± 22.0	29.9 ± 25.8	28.0 ± 27.3

1 All CZP arm includes all patients randomised to certolizumab pegol (CZP) at baseline. Data are presented as last observation carried forward (LOCF) for all patients randomised to CZP at baseline
2 according to PsA status; patients who did not achieve a ≥50% reduction from baseline in Psoriasis Area and Severity Index (PASI 50) at Week 16 and entered the open-label escape arm continued
3 to be included in these analyses. ^aAssessed in employed patients only; patient numbers: CZP 200 mg Q2W N=130; CZP 400 mg Q2W N=127; all CZP N=257; Placebo N=68. Patients with no
4 baseline value were not included in these analyses. CZP: certolizumab pegol; DLQI: Dermatology Life Quality Index; EQ-5D-3L: EuroQol 5-Dimensions 3-Level; EQ VAS: EuroQol Visual Analogue
5 Scale; LOCF: last observation carried forward; PASI: Psoriasis Area and Severity Index; Q2W: every two weeks; SD: standard deviation; SF-36: 36-Item Short Form Survey; WPAI: Work Productivity
6 and Activity Impairment.
7
8
9

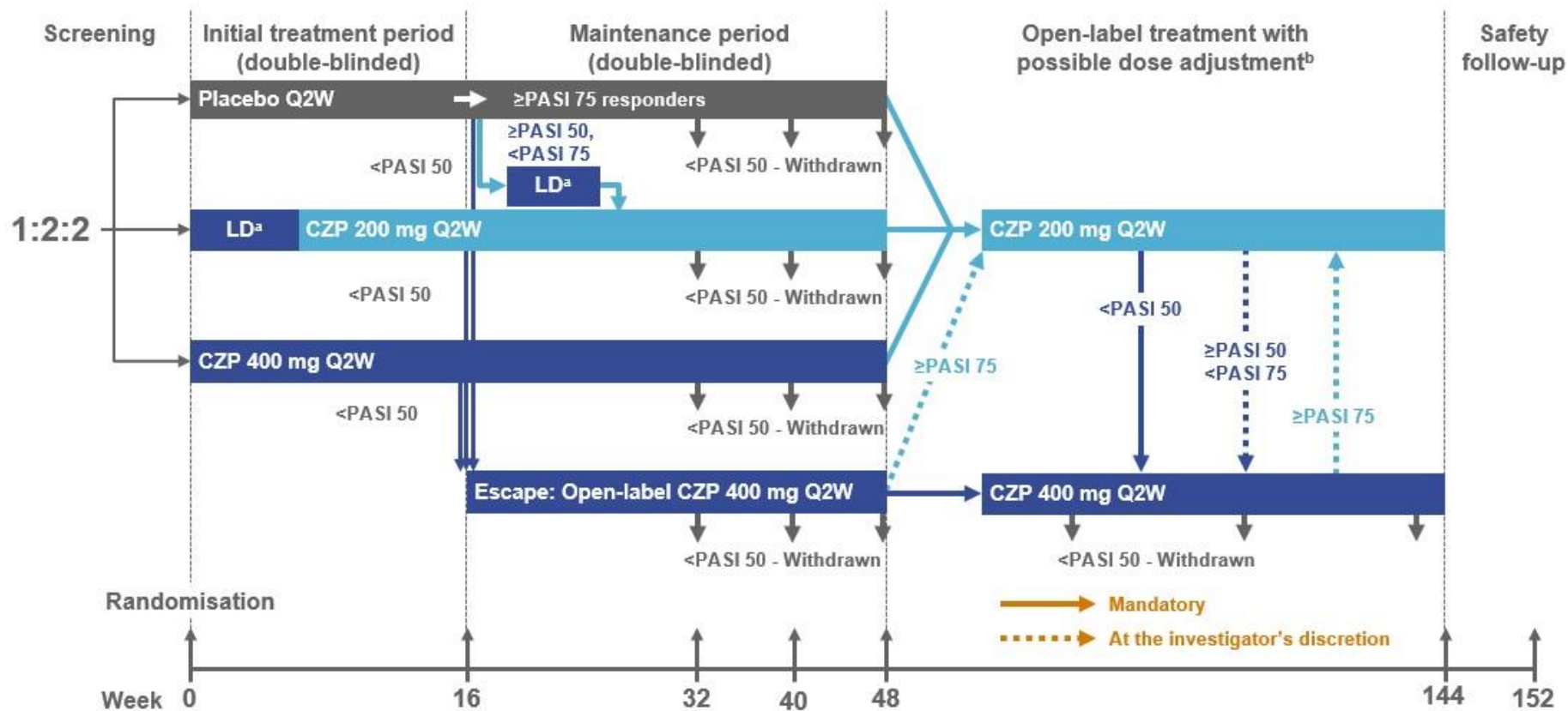
1 **Table S2.** Patient-reported outcomes by previous biologic therapy use to Week 144 (OC)

	Previous Biologic Therapy				No Previous Biologic Therapy			
	Baseline N=121	Week 16 N=114	Week 48 N=102	Week 144 N=70	Baseline N=235	Week 16 N=230	Week 48 N=197	Week 144 N=153
DLQI								
DLQI 0/1, n (%)	2 (1.7)	63 (55.3)	65 (63.7)	43 (61.4)	5 (2.1)	108 (47.0)	117 (59.4)	87 (56.9)
DLQI domain score of 0, n (%)								
Symptoms and Feelings	1 (0.8)	42 (36.8)	52 (51.0)	34 (48.6)	1 (0.4) ^a	65 (28.3)	87 (44.2)	65 (42.5)
Leisure	23 (19.0)	90 (78.9)	80 (78.4)	58 (82.9)	45 (19.0) ^a	158 (68.7)	157 (79.7)	118 (77.1)
Daily Activities	10 (8.3)	78 (68.4)	76 (74.5)	51 (72.9)	21 (8.9) ^a	139 (60.4)	137 (69.5)	109 (71.2)
Work and School	53 (43.8)	104 (91.2)	94 (92.2)	67 (95.7)	97 (40.9) ^a	185 (80.4)	176 (89.3)	129 (84.3)
Personal Relationships	35 (28.9)	90 (78.9)	86 (84.3)	59 (84.3)	76 (32.1) ^a	163 (70.9)	167 (84.8)	123 (80.4)
Treatment	32 (26.4)	81 (71.1)	80 (78.4)	54 (77.1)	86 (36.3) ^a	171 (74.3)	168 (85.3)	125 (81.7)
EQ-5D-3L								
EQ-5D-3L score of 1, n (%)								
Mobility	77 (63.6)	96 (84.2)	84 (82.4)	49 (70.0)	171 (72.8)	194 (84.3)	173 (87.8)	128 (83.7)
Self-Care	105 (86.8)	109 (95.6)	97 (95.1)	66 (94.3)	213 (90.6)	218 (94.8)	188 (95.4)	147 (96.1)
Usual Activities	77 (63.6)	100 (87.7)	90 (88.2)	56 (80.0)	163 (69.4)	188 (81.7)	175 (88.8)	133 (86.9)
Pain/Discomfort	16 (13.2)	67 (58.8)	67 (65.7)	38 (54.3)	59 (25.1)	143 (62.2)	131 (66.5)	101 (66.0)
Anxiety/Depression	68 (56.2)	96 (84.2)	81 (79.4)	53 (75.7)	112 (47.7)	164 (71.3)	140 (71.1)	113 (73.9)
EQ VAS score, mean ± SD	66.1 ± 23.0	80.5 ± 16.9	83.5 ± 14.6	79.8 ± 16.5	65.9 ± 22.2	78.4 ± 16.4	82.2 ± 13.8	82.6 ± 13.4
WPAI								
WPAI scores, mean ± SD								
Absenteeism ^b	4.4 ± 16.4	6.8 ± 17.4	3.0 ± 11.7	5.1 ± 18.3	3.8 ± 14.6	6.2 ± 17.4	4.4 ± 13.8	4.1 ± 14.8
Presenteeism ^b	19.2 ± 24.5	8.1 ± 17.6	5.5 ± 14.0	6.0 ± 11.4	19.8 ± 24.1	7.4 ± 14.8	5.6 ± 14.7	8.8 ± 17.8
Overall Work Impairment ^b	22.5 ± 28.1	13.2 ± 23.6	7.7 ± 18.0	10.8 ± 20.8	22.7 ± 27.1	12.5 ± 22.3	9.2 ± 19.1	12.2 ± 22.2
Overall Activity Impairment	33.3 ± 30.9	9.8 ± 19.4	5.9 ± 13.7	8.6 ± 16.4	33.2 ± 29.1	10.3 ± 19.1	7.1 ± 14.8	9.0 ± 18.6

2 Data are presented as observed for all patients randomised to certolizumab pegol (CZP) at baseline according to previous biologic use; patients who did not achieve a ≥50% reduction from baseline
3 in Psoriasis Area and Severity Index (PASI 50) at Week 16 and entered the open-label escape arm continued to be included in these analyses. ^aN=237; ^bAssessed in employed patients only; patient
4 numbers, previous biologic therapy: Baseline N=84; Week 16 N=79; Week 48 N=76; Week 144 N=45; no previous biologic therapy: Baseline N=173; Week 16 N=172; Week 48 N=147;
5 Week 144 N=120. DLQI: Dermatology Life Quality Index; EQ-5D-3L: EuroQol 5-Dimensions 3-Level; EQ VAS: EuroQol Visual Analogue Scale; OC: observed case; Q2W: every two weeks;
6 WPAI: Work Productivity and Activity Impairment.

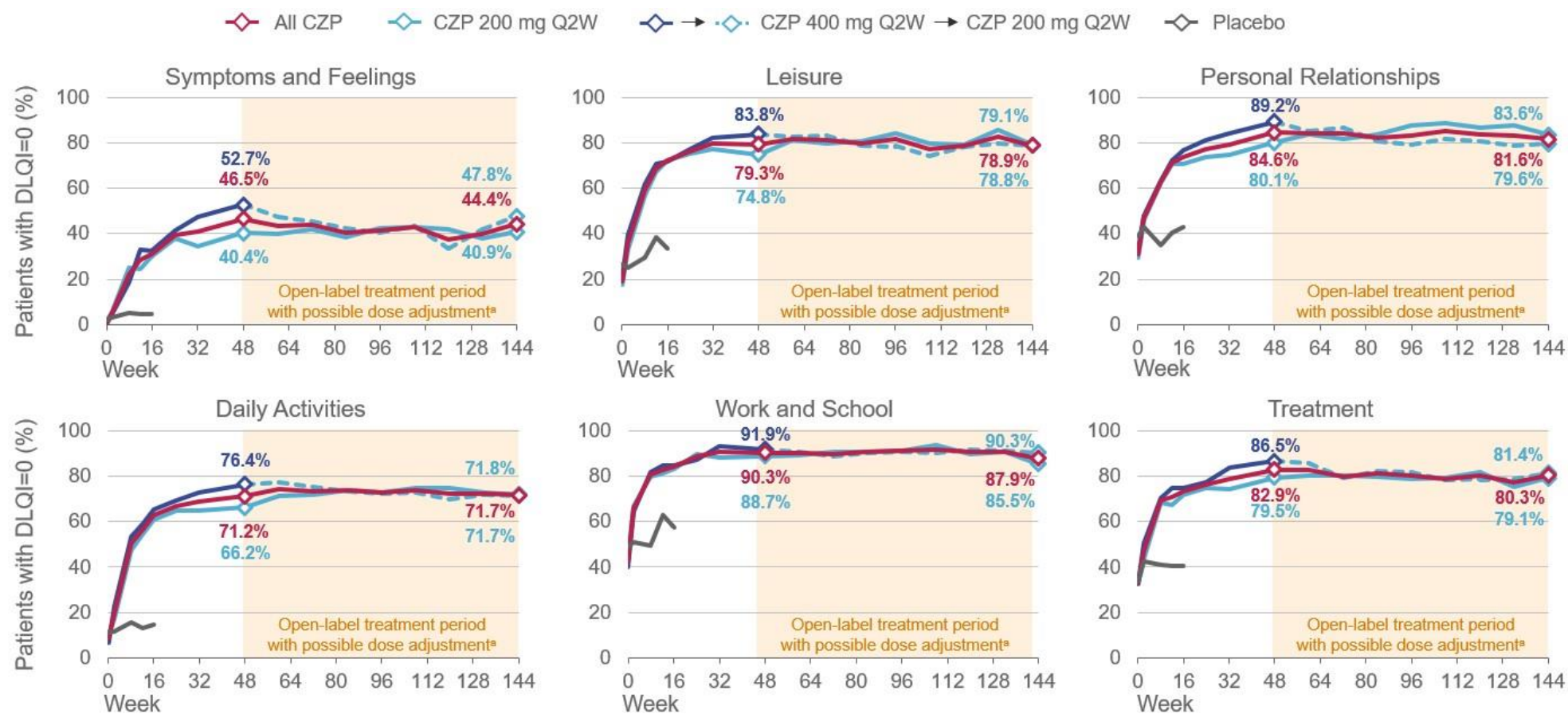
7
8

1 **Figure S1.** The initial, maintenance and open-label periods of the CIMPASI-1 and CIMPASI-2 phase 3 trials



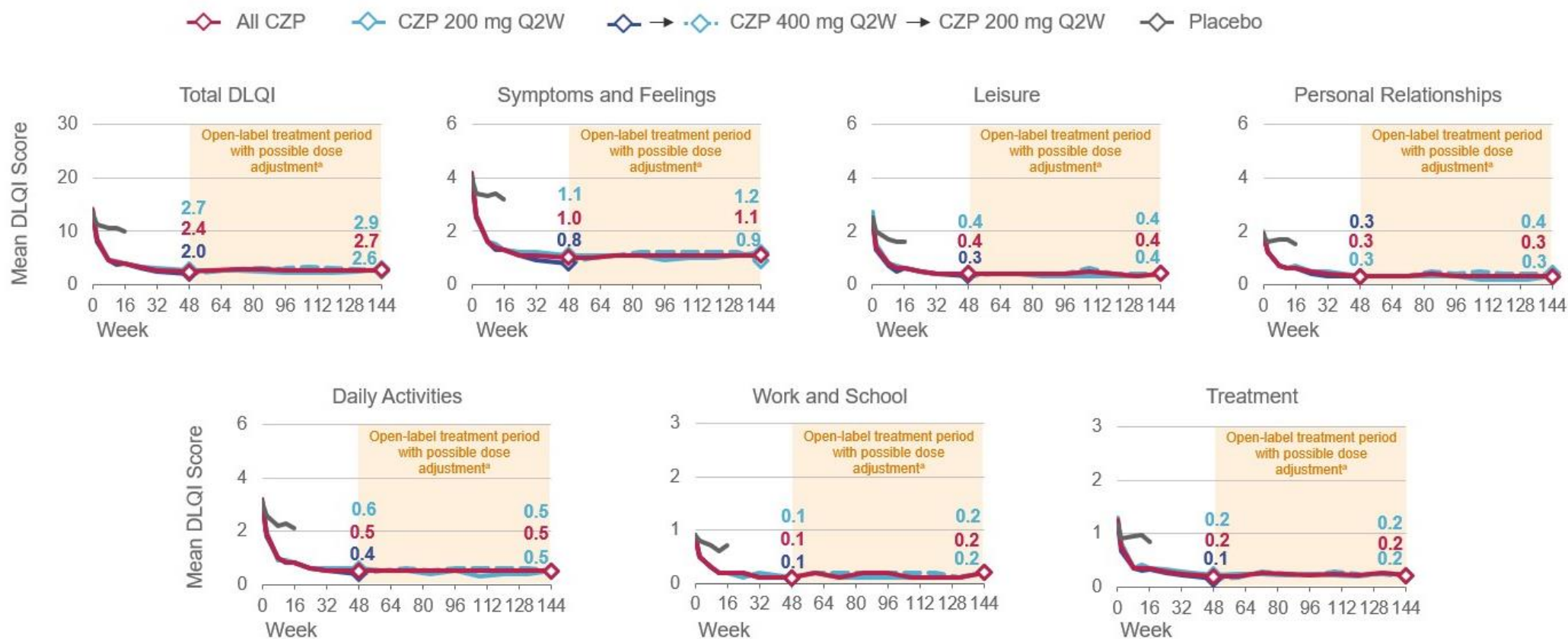
2 ^aDose adjustments were permitted through Weeks 60–132; dose escalation was mandatory in patients not achieving ≥50% reduction from baseline in Psoriasis Area and Severity Index (PASI 50),
3 and at the investigator's discretion in patients achieving PASI 50 but not PASI 75; patients who had received certolizumab pegol (CZP) 400 mg every two weeks (Q2W) for at least 12 weeks could
4 have had their dose reduced, at the investigator's discretion, if they achieved PASI 75, and were mandatorily withdrawn in they did not achieve PASI 50; ^bPatients entering the open-label period
5 from the CZP 400 mg Q2W escape arm continued to receive CZP 400 mg Q2W but may have had their dose reduced to CZP 200 mg Q2W at Week 48, at the discretion of the investigator, if they
6 achieved PASI 75. CZP: certolizumab pegol; LD: loading dose; PASI: Psoriasis Area and Severity Index; Q2W: every two weeks.

1 **Figure S2a.** DLQI domain score=0 to Week 144 (OC)



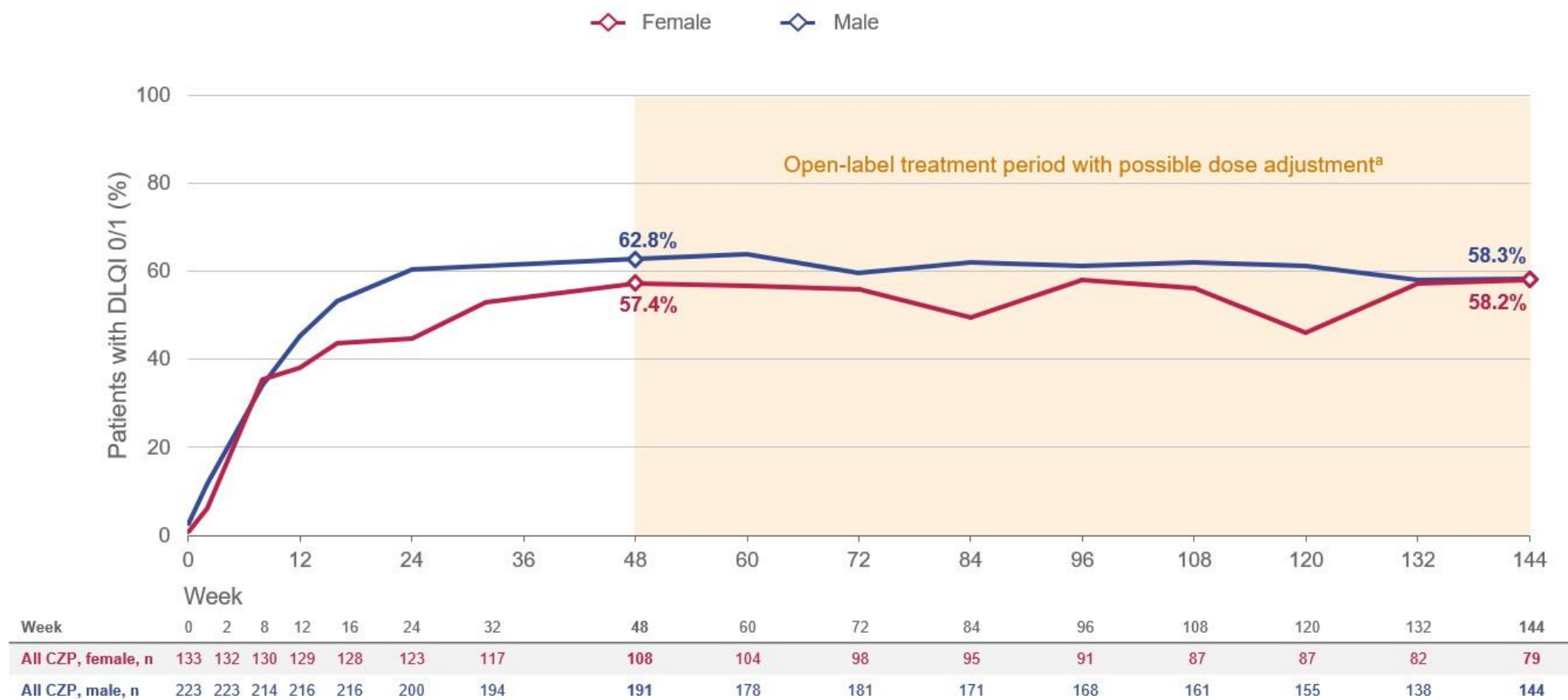
2 Data are presented as observed for all patients according to initial randomisation group; CZP-randomised patients who did not achieve a $\geq 50\%$ reduction from baseline in Psoriasis Area and
 3 Severity Index (PASI 50) at Week 16 and entered the open-label escape arm continued to be included in these analyses. ^aDose adjustments were mandatory or at the investigator's discretion,
 4 based on PASI response. Number of patients with assessments at each visit are identical to those presented in **Figure 1**, except for Week 0. Week 0: CZP 200 mg Q2W, n=184; CZP 400 mg Q2W,
 5 n=174; all CZP, n=358; placebo, n=98. CZP: certolizumab pegol; DLQI: Dermatology Life Quality Index; PASI: Psoriasis Area and Severity Index; Q2W: every two weeks.

1 **Figure S2b.** Absolute total and domain DLQI scores to Week 144 (OC)



2 Data are presented as observed for all patients according to initial randomisation group; CZP-randomised patients who did not achieve a $\geq 50\%$ reduction from baseline in Psoriasis Area and
 3 Severity Index (PASI 50) at Week 16 and entered the open-label escape arm continued to be included in these analyses. ^aDose adjustments were mandatory or at the investigator's discretion,
 4 based on PASI response. Number of patients with assessments at each visit are identical to those presented in **Figure 2** at all timepoints. CZP: certolizumab pegol; DLQI: Dermatology Life Quality
 5 Index; PASI: Psoriasis Area and Severity Index; Q2W: every two weeks.

1 **Figure S3a.** Total DLQI score of 0 or 1, CZP-randomised patients by sex to Week 144 (OC)



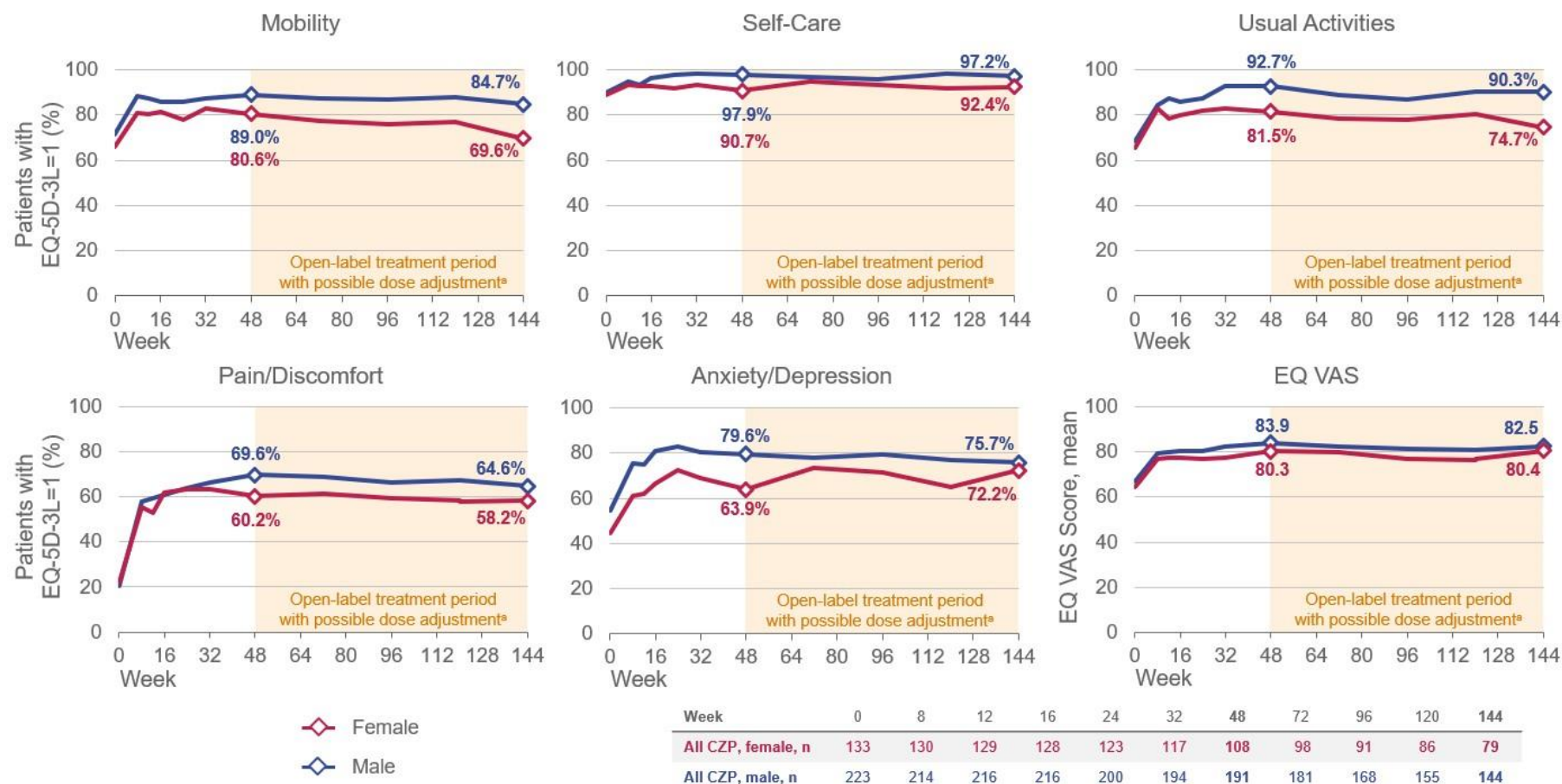
2 Data are presented as observed for all patients randomised to CZP at baseline according to sex; patients who did not achieve a $\geq 50\%$ reduction from baseline in Psoriasis Area and Severity
 3 Index (PASI 50) at Week 16 and entered the open-label escape arm continued to be included in these analyses. ^aDose adjustments were mandatory or at the investigator's discretion, based on
 4 PASI response. CZP: certolizumab pegol; PASI: Psoriasis Area and Severity Index; Q2W: every two weeks.

1 **Figure S3b.** DLQI domain score=0, CZP-randomised patients by sex to Week 144 (OC)



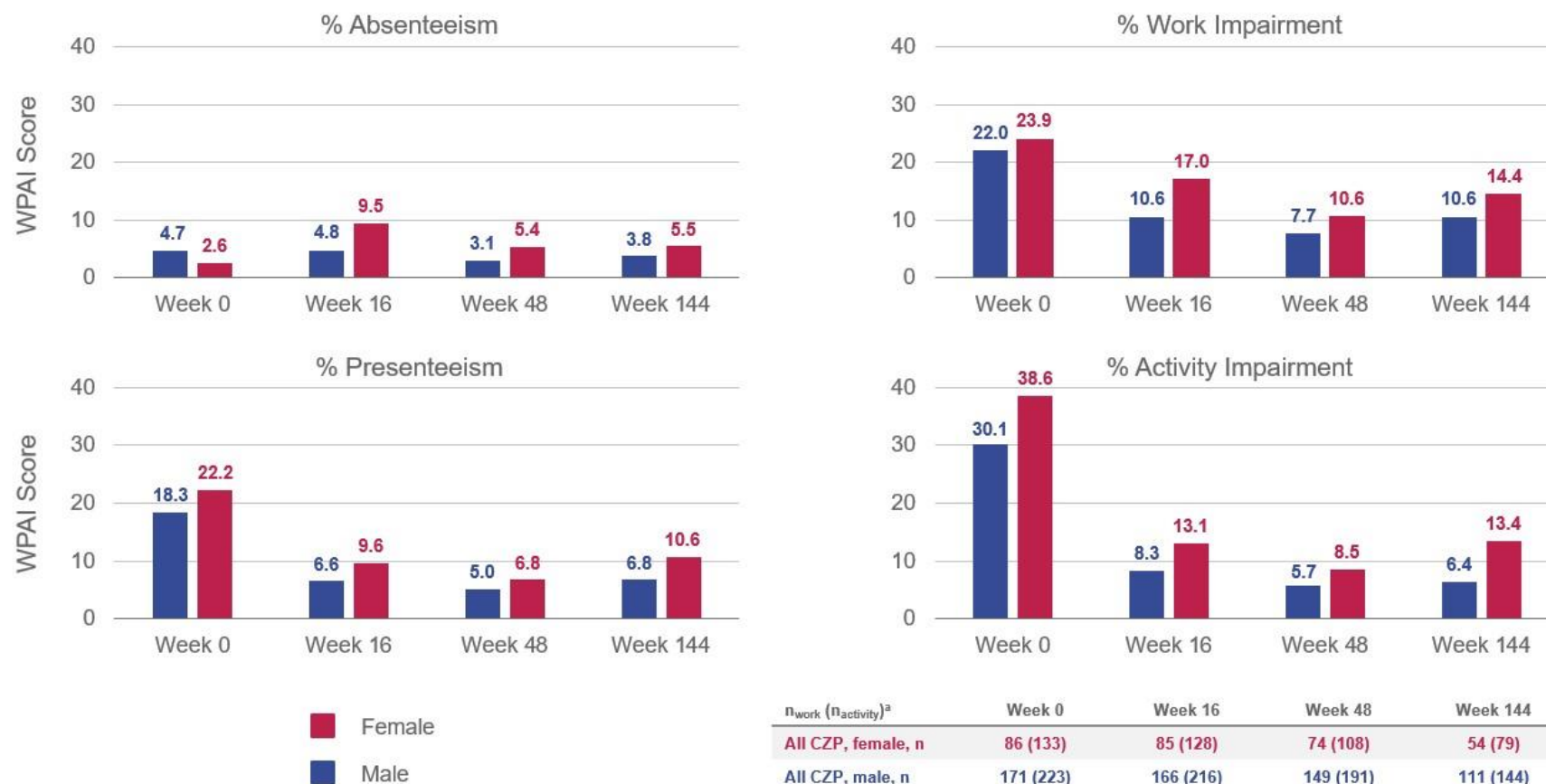
2 Data are presented as observed for all patients randomised to CZP at baseline according to sex; patients who did not achieve a $\geq 50\%$ reduction from baseline in Psoriasis Area and Severity
 3 Index (PASI 50) at Week 16 and entered the open-label escape arm continued to be included in these analyses. ^aDose adjustments were mandatory or at the investigator's discretion, based on
 4 PASI response. Number of patients with assessments at each visit are identical to those presented in **Figure S3A**, except for Males, Week 0 (n=225). CZP: certolizumab pegol; DLQI: Dermatology
 5 Life Quality Index; PASI: Psoriasis Area and Severity Index; Q2W: every two weeks.

1 **Figure S3c.** EQ-5D-3L score=1 and mean EQ VAS, CZP-randomised patients by sex to Week 144 (OC)



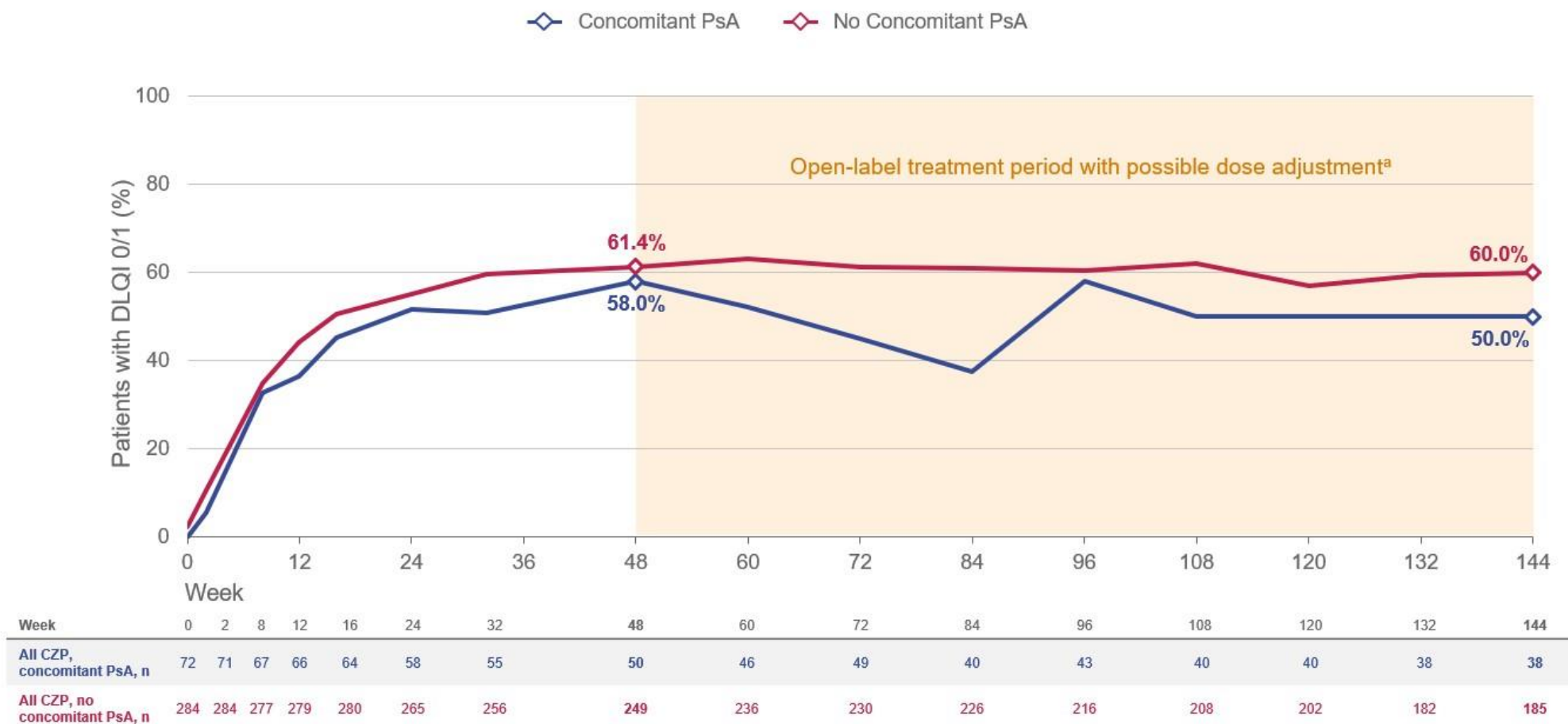
2
3
4 Data are presented as observed for all patients randomised to CZP at baseline according to sex; patients who did not achieve a $\geq 50\%$ reduction from baseline in Psoriasis Area and Severity Index (PASI 50) at Week 16 and entered the open-label escape arm continued to be included in these analyses. ^aDose adjustments were mandatory or at the investigator's discretion, based on
5 PASI response. CZP: certolizumab pegol; EQ-5D-3L: EuroQol 5-Dimensions 3-Level; EQ VAS: EuroQol Visual Analogue Scale; PASI: Psoriasis Area and Severity Index; PsA: psoriatic arthritis;
6 Q2W: every two weeks.

1 **Figure S3d.** Mean WPAI, CZP-randomised patients by sex (OC)



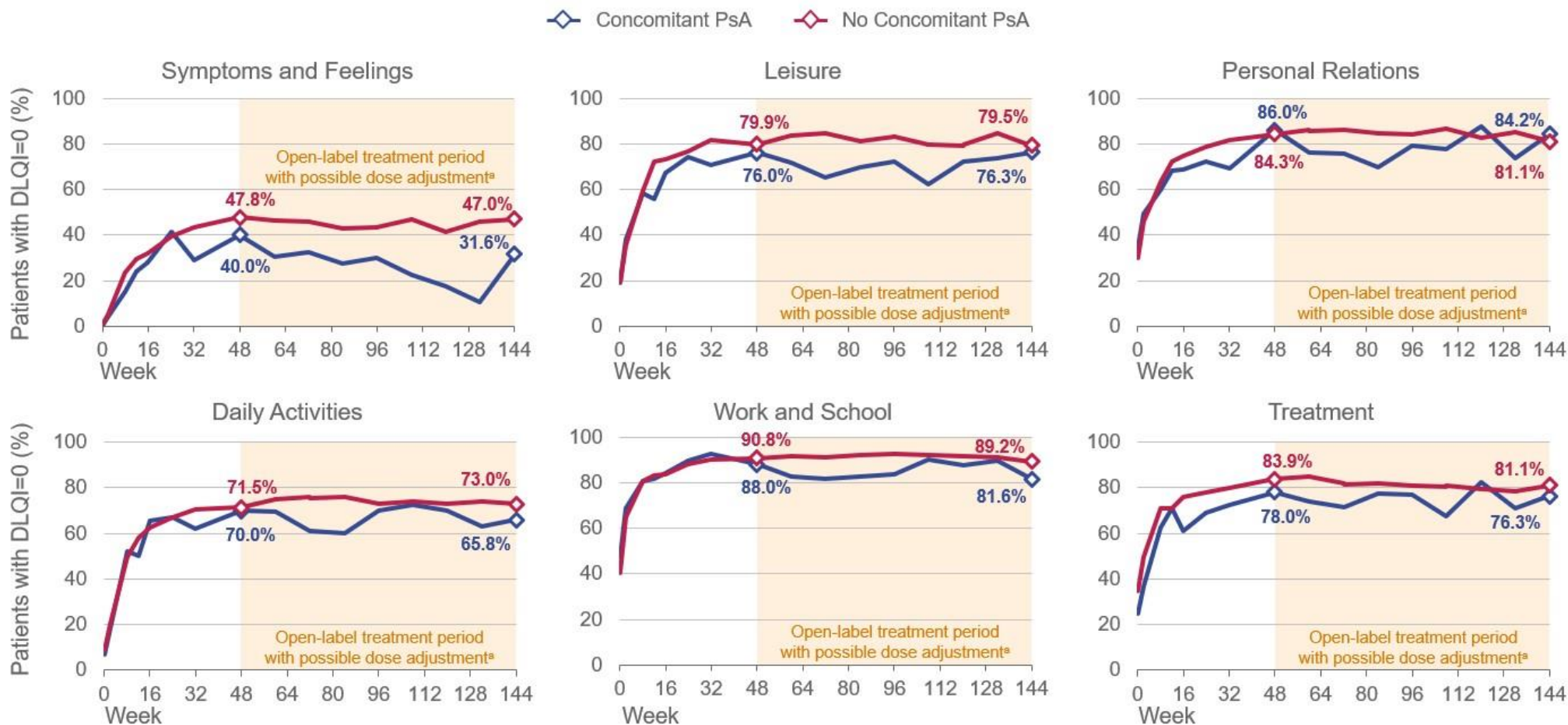
2 Data are presented as observed for all patients randomised to CZP at baseline according to sex; patients who did not achieve a $\geq 50\%$ reduction from baseline in Psoriasis Area and Severity
3 Index (PASI 50) at Week 16 and entered the open-label escape arm continued to be included in these analyses. From Week 48, dose adjustments were mandatory or at the investigator's discretion,
4 based on PASI response. ^aThe ' n_{work} ' category includes absenteeism, presenteeism and overall work impairment; ' $n_{activity}$ ' includes overall activity impairment. CZP: certolizumab pegol; PASI: Psoriasis
5 Area and Severity Index; Q2W: every two weeks.

1 **Figure S4a.** Total DLQI score of 0 or 1, CZP-randomised patients by PsA status to Week 144 (OC)



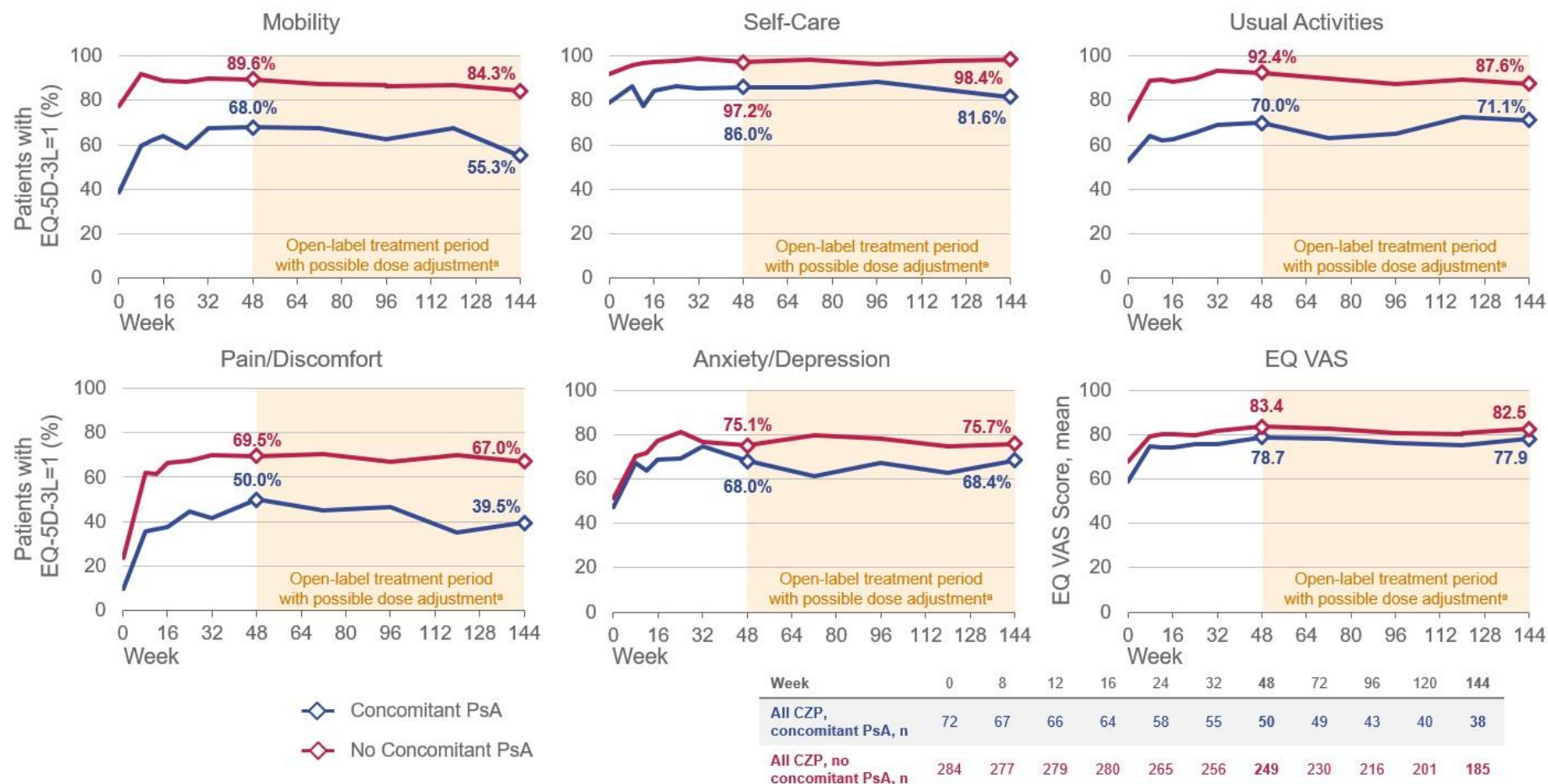
2 Data are presented as observed for all patients randomised to CZP at baseline according to PsA status; patients who did not achieve a $\geq 50\%$ reduction from baseline in Psoriasis Area and Severity
 3 Index (PASI 50) at Week 16 and entered the open-label escape arm continued to be included in these analyses. ^aDose adjustments were mandatory or at the investigator's discretion, based on
 4 PASI response. CZP: certolizumab pegol; PASI: Psoriasis Area and Severity Index; PsA: psoriatic arthritis; Q2W: every two weeks.

1 **Figure S4b.** DLQI domain score=0, CZP-randomised patients by PsA status to Week 144 (OC)



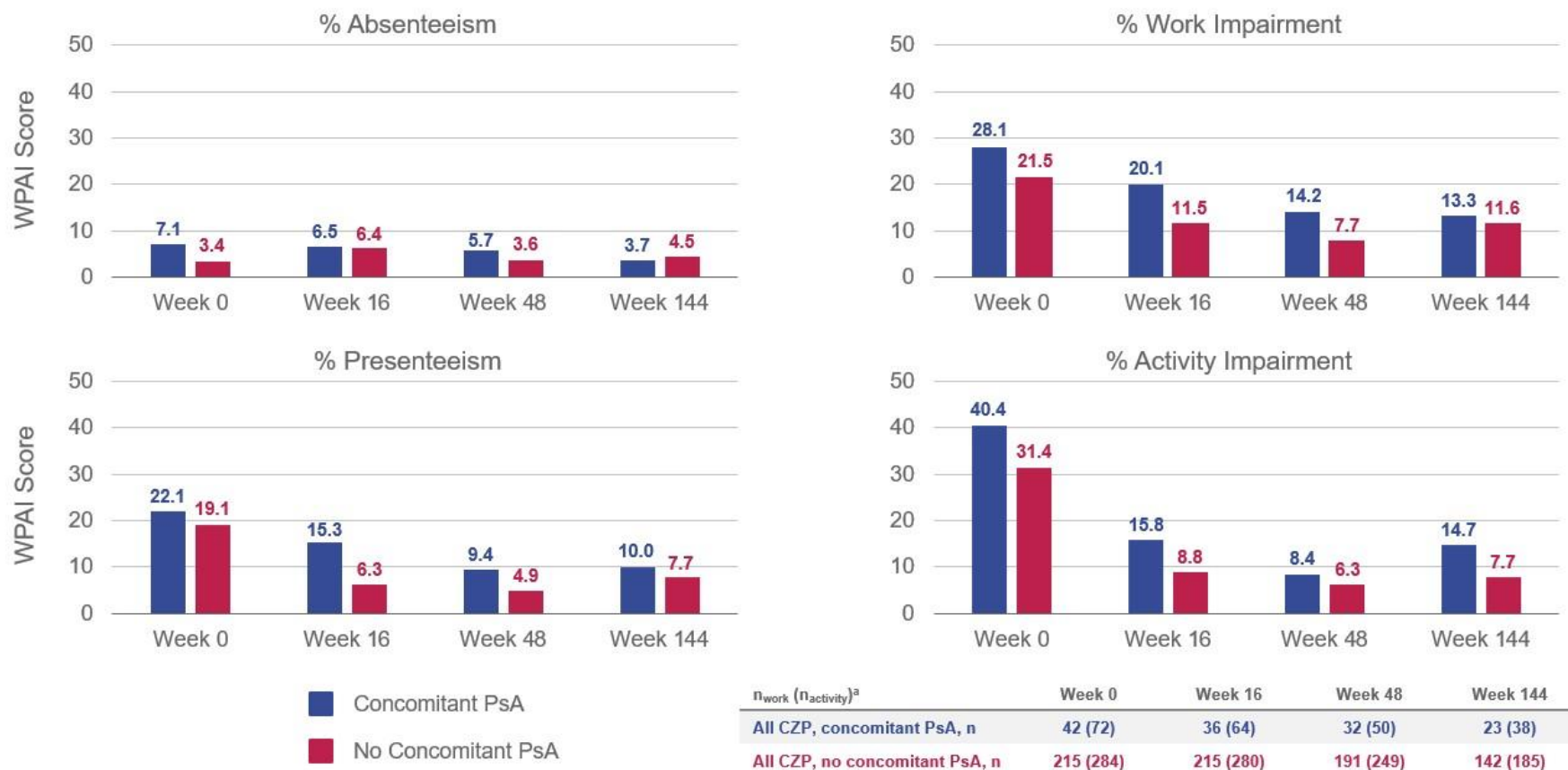
2 Data are presented as observed for all patients randomised to CZP at baseline according to PsA status; patients who did not achieve a $\geq 50\%$ reduction from baseline in Psoriasis Area and Severity
3 Index (PASI 50) at Week 16 and entered the open-label escape arm continued to be included in these analyses. ^aDose adjustments were mandatory or at the investigator's discretion, based on
4 PASI response. CZP: certolizumab pegol; DLQI: Dermatology Life Quality Index; PASI: Psoriasis Area and Severity Index; PsA: psoriatic arthritis; Q2W: every two weeks. Number of patients with
5 assessments at each visit are identical to those presented in **Figure S4A**, except for those with no concomitant PsA, Week 0 (n=286).

1 **Figure S4c.** EQ-5D-3L score=1 and mean EQ VAS, CZP-randomised patients by PsA status to Week 144 (OC)



2 Data are presented as observed for all patients randomised to CZP at baseline according to PsA status; patients who did not achieve a $\geq 50\%$ reduction from baseline in Psoriasis Area and Severity
3 Index (PASI 50) at Week 16 and entered the open-label escape arm continued to be included in these analyses. ^aDose adjustments were mandatory or at the investigator's discretion, based on
4 PASI response. CZP: certolizumab pegol; EQ-5D-3L: EuroQol 5-Dimensions 3-Level; EQ VAS: EuroQol Visual Analogue Scale; PASI: Psoriasis Area and Severity Index; PsA: psoriatic arthritis;
5 Q2W: every two weeks.

1 **Figure S4d.** Mean WPAI, CZP-randomised patients by PsA status (OC)



2 Data are presented as observed for all patients randomised to CZP at baseline according to PsA status; patients who did not achieve a $\geq 50\%$ reduction from baseline in Psoriasis Area and Severity
3 Index (PASI 50) at Week 16 and entered the open-label escape arm continued to be included in these analyses. From Week 48, dose adjustments were mandatory or at the investigator's discretion,
4 based on PASI response. ^aThe ' n_{work} ' category includes absenteeism, presenteeism and overall work impairment; ' $n_{activity}$ ' includes overall activity impairment. CZP: certolizumab pegol; PASI: Psoriasis
5 Area and Severity Index; PsA: psoriatic arthritis; Q2W: every two weeks.