

Article title: MECHANICAL LOADING DIFFERENTIALLY AFFECTS OSTEOCYTES IN FIBULAE FROM LACTATING MICE COMPARED TO OSTEOCYTES IN VIRGIN MICE: POSSIBLE ROLE FOR LACUNA SIZE

Journal name: Calcified Tissue International

Author names: Haniyeh Hemmatian^{1,2}, Rozita Jalali², Cor M. Semeins², Jolanda M.A. Hogervorst², G. Harry van Lenthe¹, Jenneke Klein-Nulend², Astrid D. Bakker²

Affiliation:

¹ Biomechanics Section, Department of Mechanical Engineering, KU Leuven, Leuven, Belgium

² Department of Oral Cell Biology, Academic Centre for Dentistry Amsterdam (ACTA), University of Amsterdam and Vrije Universiteit Amsterdam, Amsterdam Movement Sciences, Amsterdam, The Netherlands

Corresponding author:

Jenneke Klein-Nulend

Email: j.kleinnulend@acta.nl

Supplementary data

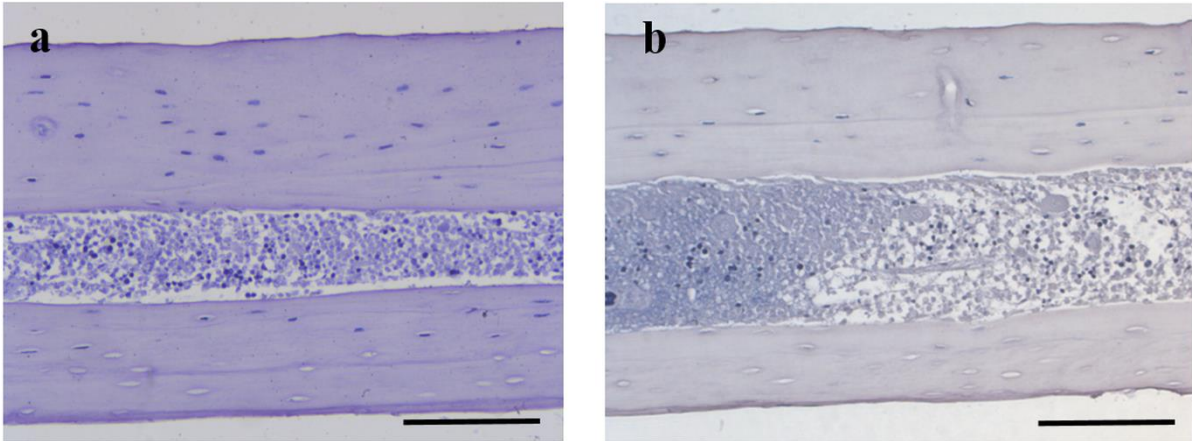


Fig S1. Negative controls for immunohistochemical staining for sclerostin (a) and β -catenin (b).