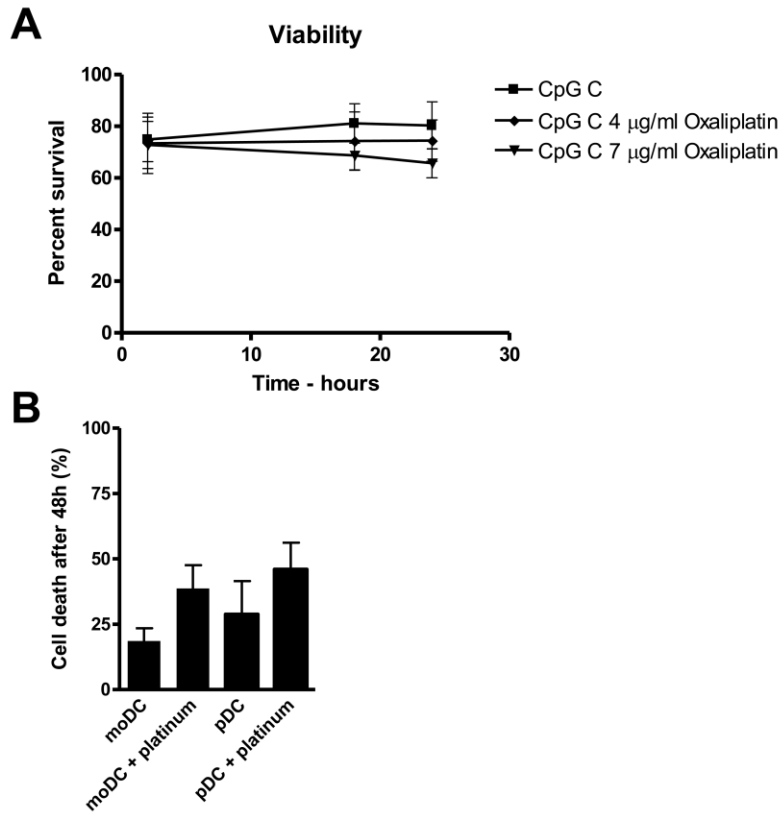
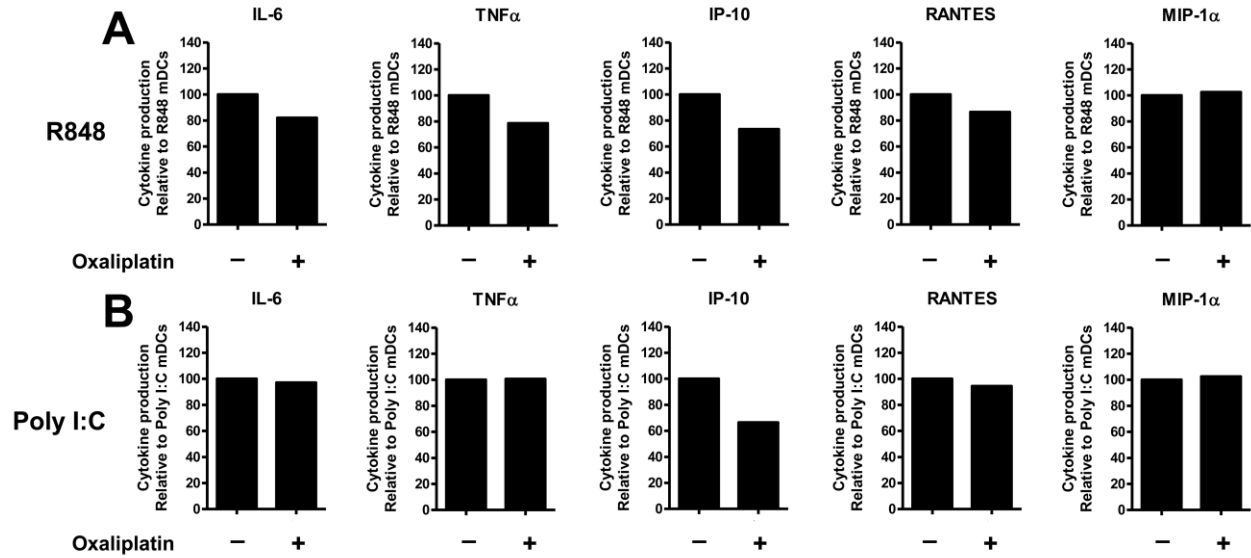


Supplemental Figures



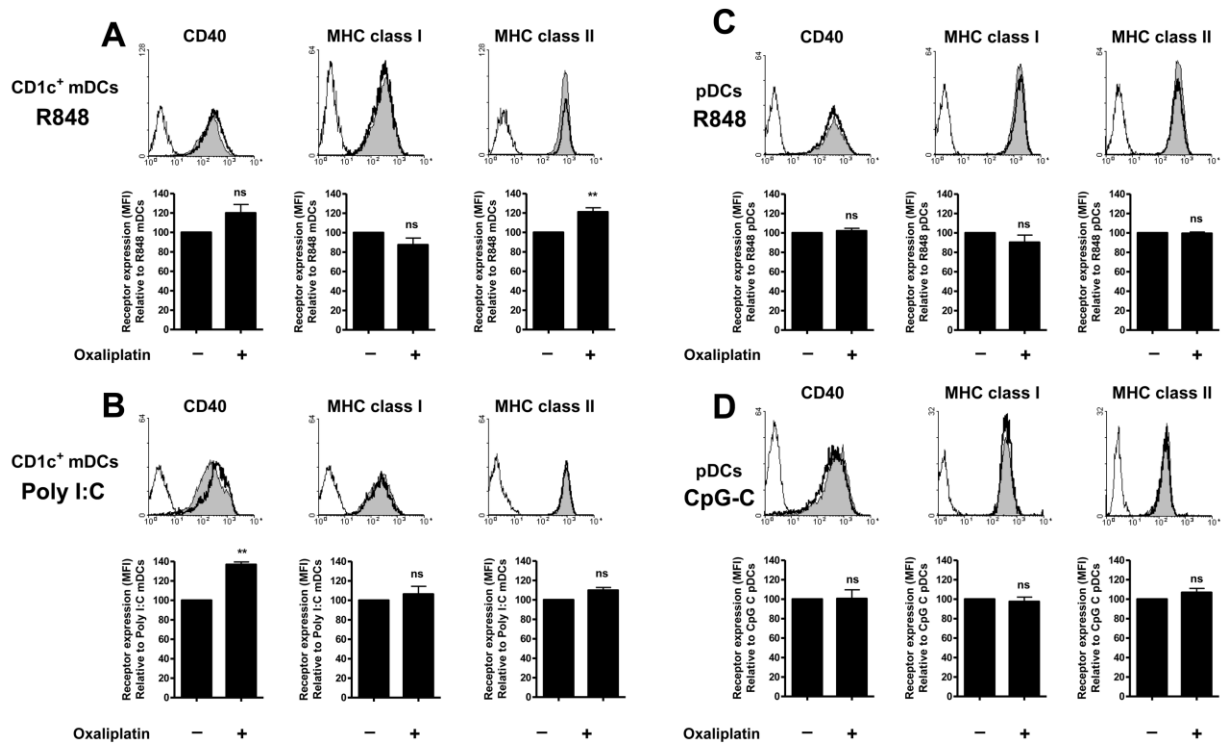
Supplemental Figure 1

(A) Viability, percentage PI⁻/Annexin V⁺, of pDCs after overnight incubation with CpG C (■), CpG C + 4 $\mu\text{g/ml}$ oxaliplatin (◆) and CpG C + 7 $\mu\text{g/ml}$ oxaliplatin (▼). (B) The graph shows the percentage cell death of moDCs or pDCs cultured in the presence or absence of oxaliplatin after 48 hours culture.



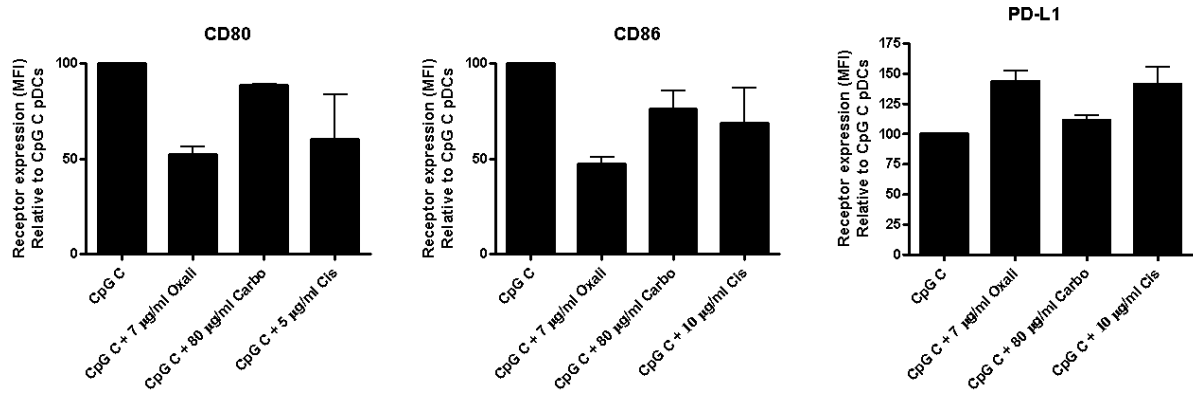
Supplemental Figure 2 Oxaliplatin modulates the TLR-induced mDC cytokine profile

Supernatants of mDC cultures following incubation with R848 (A) or Poly I:C (B) with or without oxaliplatin were analyzed for the presence IL-6, TNF α , IP-10, RANTES, MIP-1 α and IFN α . The graphs show cytokine and chemokine production relative to pDCs activated in the absence oxaliplatin. Data shown are the results of one experiment.



Supplemental Figure 3 Oxaliplatin modulates the TLR induced human blood DC phenotype

Freshly isolated CD1c⁺ mDCs and pDCs were activated overnight with either R848 or Poly I:C, for mDCs, and with R848 or CpG-C, for pDCs, with or without 7 μ g/ml oxaliplatin. Histograms show the TLR-induced receptor expression levels of the surface molecules CD40, MHC class I and II on pDCs/mDCs (grey filled) compared to expression levels of oxaliplatin treated TLR-activated pDCs/mDCs (thick black lines) and the appropriate isotype control (thin black line). Graphs show the receptor expression levels of the surface molecules CD40 and MHC class I and II of pDCs/mDCs relative to R848 (A), Poly I:C (B) activated mDCs or R848 (C), CpG-C (D) activated pDCs. Data shown are mean values of at least three independent experiments \pm SEM.



Supplemental Figure 4 Platinum compounds impair CpG-C induced CD80 and CD86, but enhance PD-L1 expression on human pDCs

Freshly isolated pDCs were activated overnight with CpG-C with or without 7 µg/ml oxaliplatin, 80 µg/ml carboplatin or 5 µg/ml cisplatin. Graphs show the receptor expression levels of the surface molecules CD80, CD86 and PD-L1 of pDCs relative to CpG-C activated pDCs. Data shown are mean values of at least three independent experiments ± SEM.