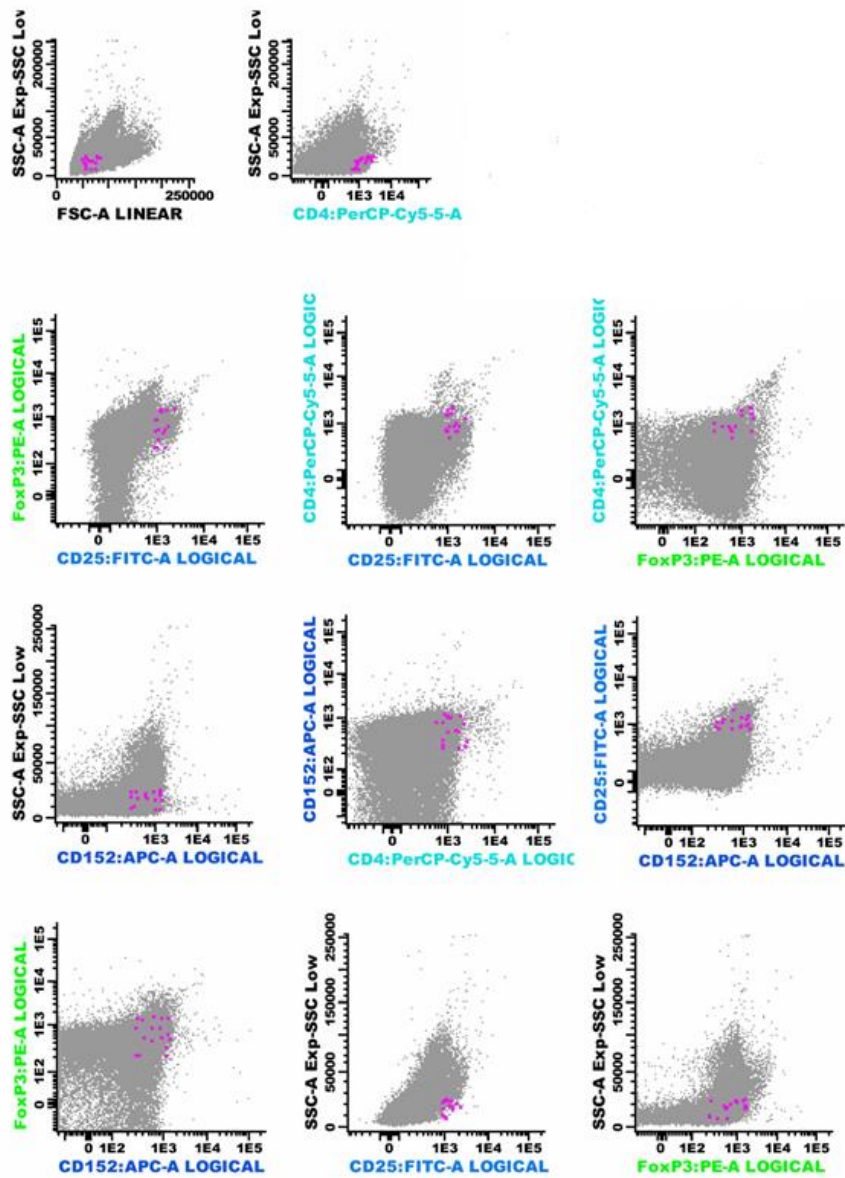
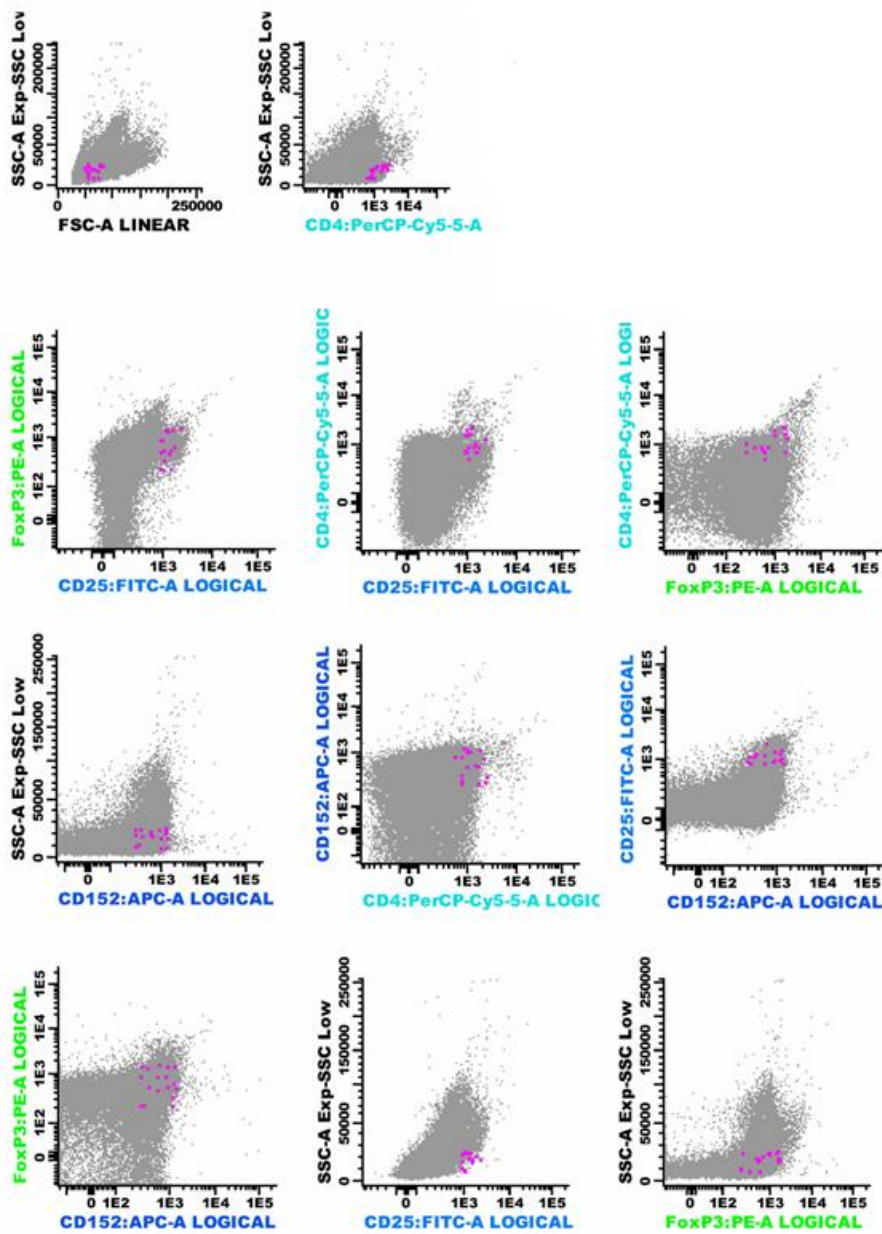


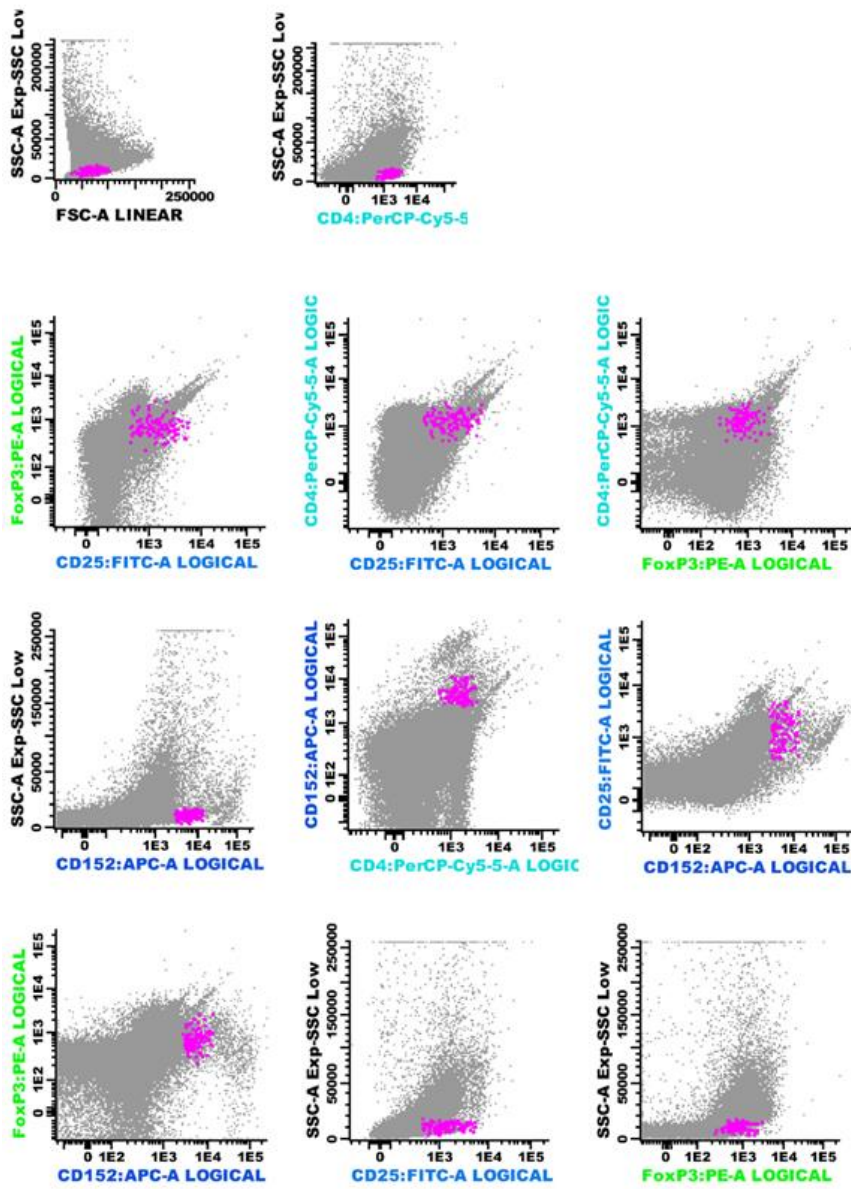
## Supplementary Figure 1



**Supplementary Figure 1 A** - Analysis of Treg cells by flow cytometry in total bone marrow aspirate: CD3+CD4+CD25highFOXP3+CTLA4(CD152)+ cells in a solitary plasmacytoma case.



**Supplementary Figure 1 B** - Analysis of Treg cells by flow cytometry in total bone marrow aspirate: CD3+CD4+CD25highFOXP3+CTLA4(CD152)+ cells in a healthy donor sample.



**Supplementary Figure 1 C** - Analysis of Treg cells by flow cytometry in total bone marrow aspirate: CD3+CD4+CD25highFOXP3+CTLA4(CD152)+ in a multiple myeloma case.