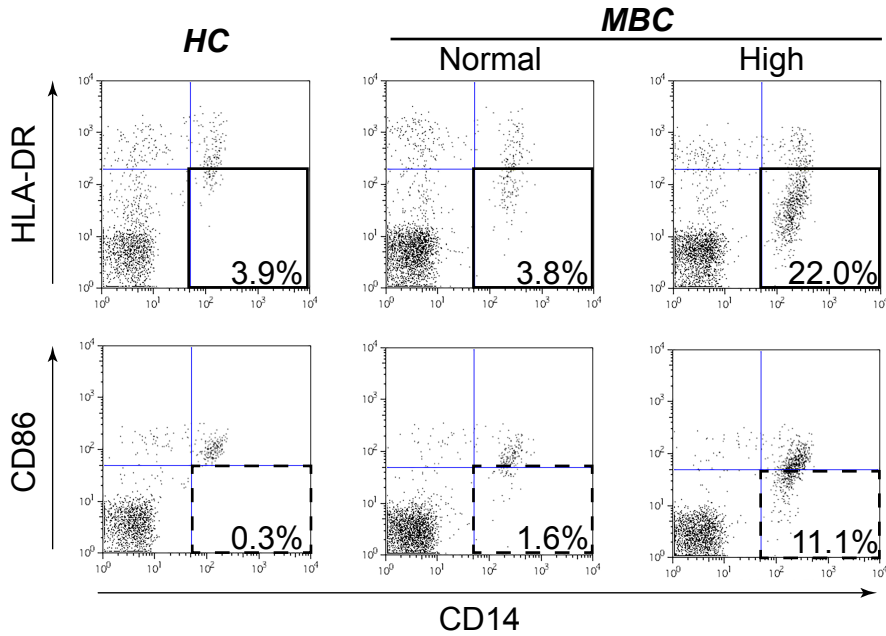
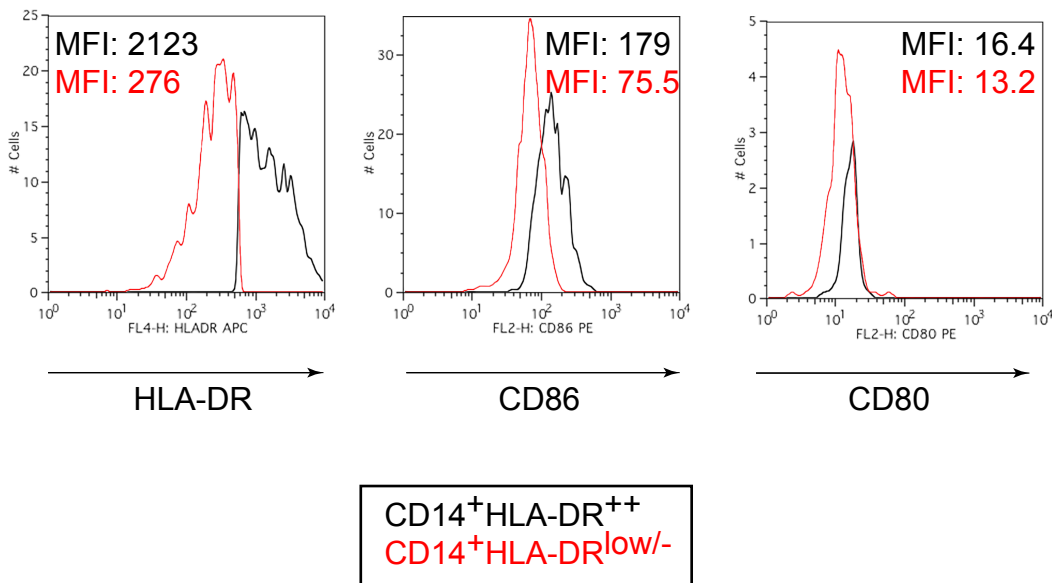


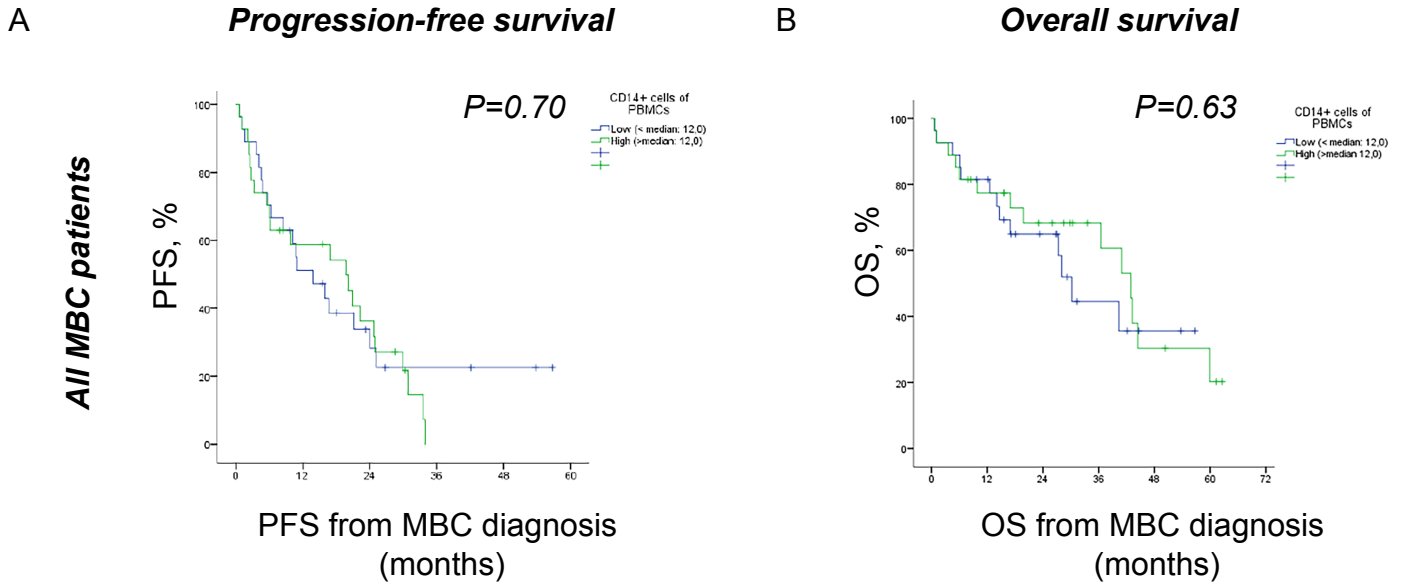
A



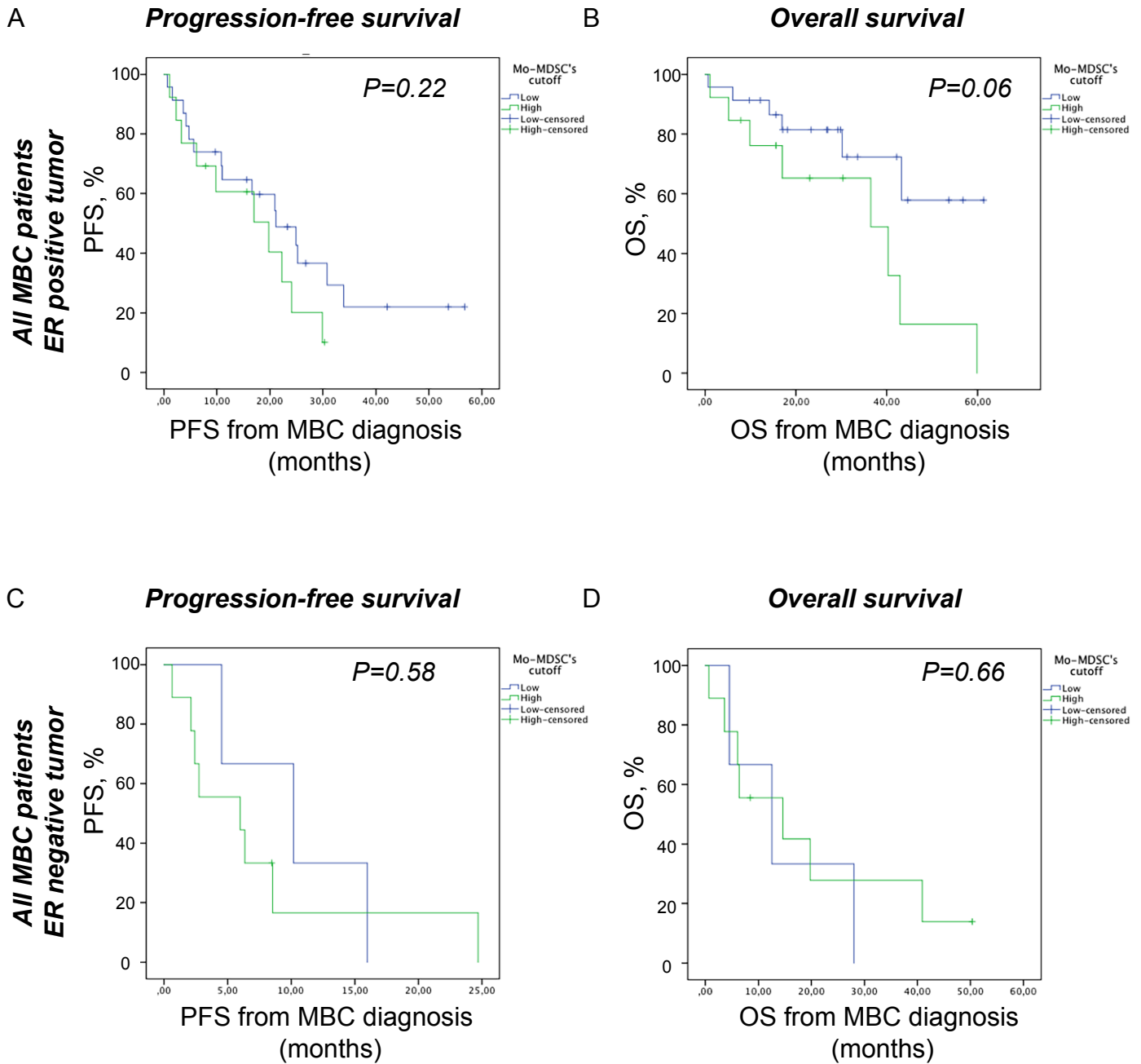
B



**Supplementary Figure 1. Flow cytometric analyzes of CD14<sup>+</sup>HLA-DR<sup>low/-</sup> and CD14<sup>+</sup>HLA-DR<sup>++</sup> cells.** (A) Representative dot plots of CD14, HLA-DR and co-receptor CD86, gated on all viable PBMCs. Mo-MDSCs were defined as CD14<sup>+</sup>HLA-DR<sup>low/-</sup> cells (black box). All CD14<sup>+</sup>HLA-DR<sup>low/-</sup> cells had lower expression of CD86 (dashed box) as compared to CD14<sup>+</sup>HLA-DR<sup>++</sup> cells. (B) Representative histograms of mean fluorescence intensity (MFI) for HLA-DR, CD86 and CD80 in CD14<sup>+</sup>HLA-DR<sup>++</sup> (black) and CD14<sup>+</sup>HLA-DR<sup>low/-</sup> (red) cells.



**Supplementary Figure 2. Monocyte levels and associations to survival.** (A-B) Kaplan-Meier curves of progression-free survival (PFS; A) and overall survival (OS; B) according to the monocyte levels (all CD14<sup>+</sup> cells), divided by median level of monocytes, 12.0 % of PBMCs, in all MBC patients ( $n=54$ ). Median PFS in low and high group was 13.8 months (95% CI 5.7-21.9) and 19.7 months (95% CI 7.7-31.8), respectively. Median OS in low and high group was 30.2 months (95% CI 25.4-34.9) and 42.9 months (95% CI 35.7-50.1), respectively. Statistics by Log-rank test.



**Supplementary Figure 3. Mo-MDSC levels and associations to survival in all MBC patients stratified for tumor ER status.** Kaplan Meier curves of progression-free (PFS) and overall survival (OS) in relation to Mo-MDSC levels in MBC patients with ER positive ( $n=36$ , **A-B**) versus ER negative ( $n=12$ , **C-D**) disease. Statistics by log rank test.

**Supplementary Table 1. Table illustrating previous adjuvant therapy (chemotherapy and endocrine therapy) for early breast cancer in 42 patients diagnosed with distant recurrent MBC.** <sup>a</sup> Statistics by Pearson Chi Square test. <sup>b</sup> Statistics by Fisher's exact test.

<i>Type of therapy</i>		<i>Normal Mo-MDSCs n=26</i>	<i>High Mo-MDSCs n=16</i>	<i>P value</i>
<b>Chemotherapy</b>	Yes	11	10	0.20 <sup>a</sup>
	No	15	6	
	Unknown	0	0	
<b>Endocrine therapy</b>	Yes	22	12	0.45 <sup>b</sup>
	No	4	4	
	Unknown	0	0	
<b>Endocrine therapy at MBC diagnosis</b>	Yes	10	3	0.30 <sup>b</sup>
	No	14	12	
	Unknown	2	1	