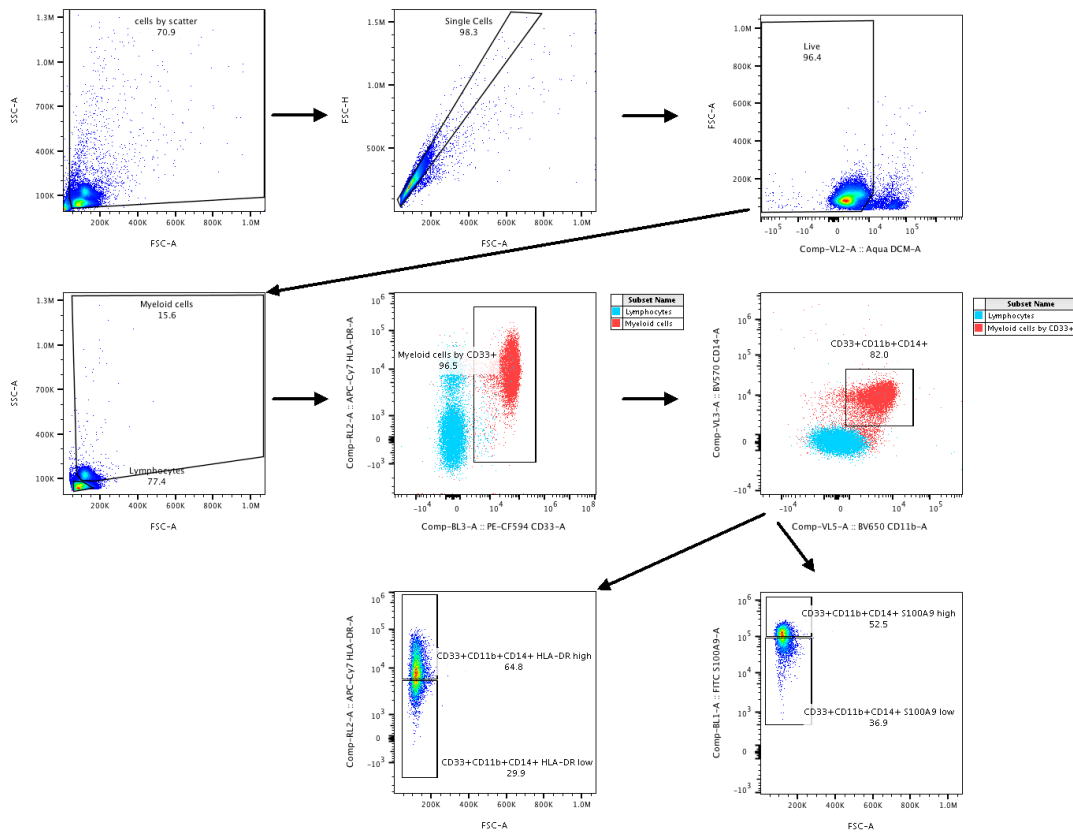
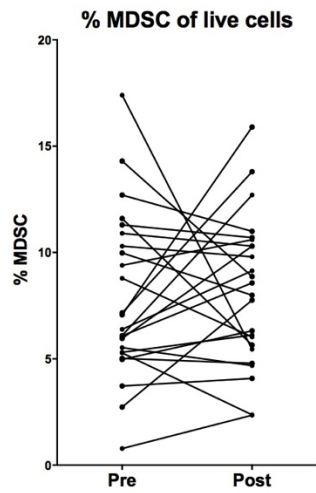


## Supplementary figure 1



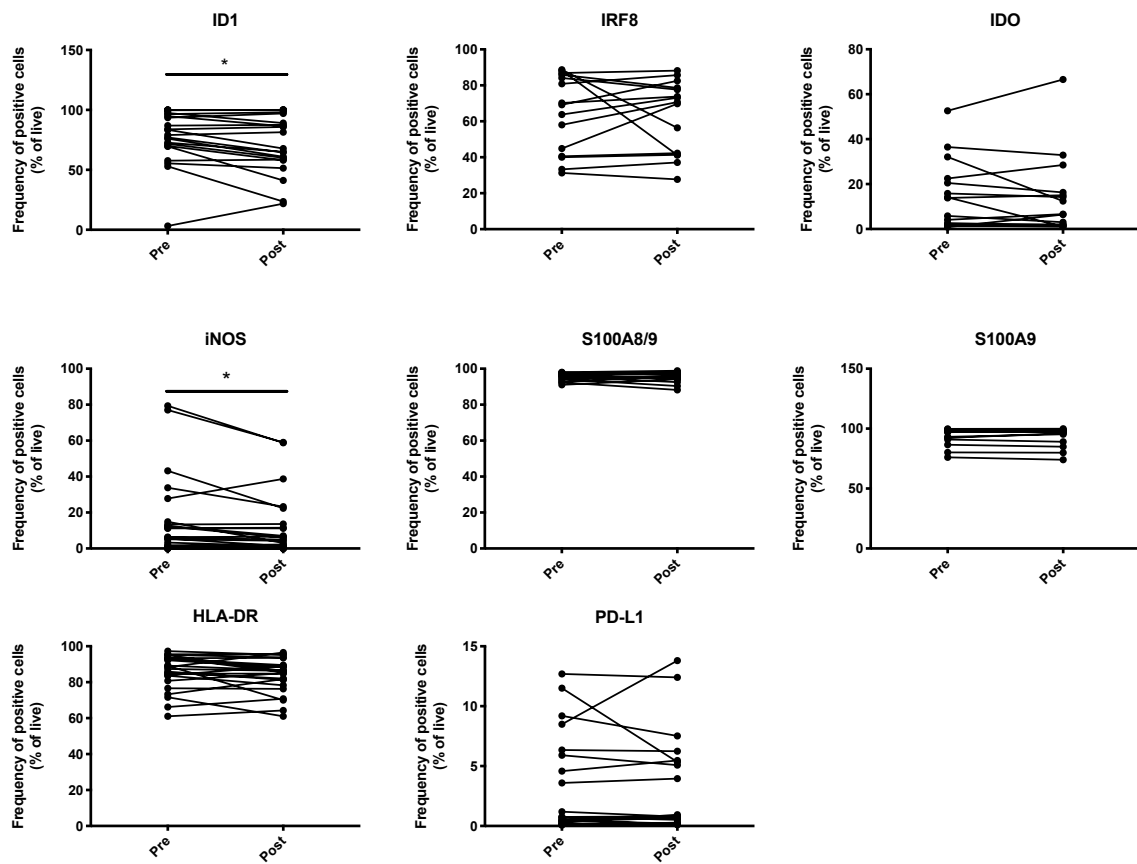
**Supplementary fig. 1** Gating strategy for defining monocytic myeloid-derived suppressor cells, according to gating by forward and side scatter, CD33, CD11b, CD14 positivity and low to absent HLA-DR expression. Low to negative expression of HLA-DR or S100A9 on CD33<sup>+</sup>CD11b<sup>+</sup>CD14<sup>+</sup> monocytes was defined using the lymphocyte population as an internal control, as the bulk of these cells are negative for HLA-DR. A subpopulation of activated T cells may express HLA-DR at relatively low levels, which was also seen in our samples.

## Supplementary figure 2



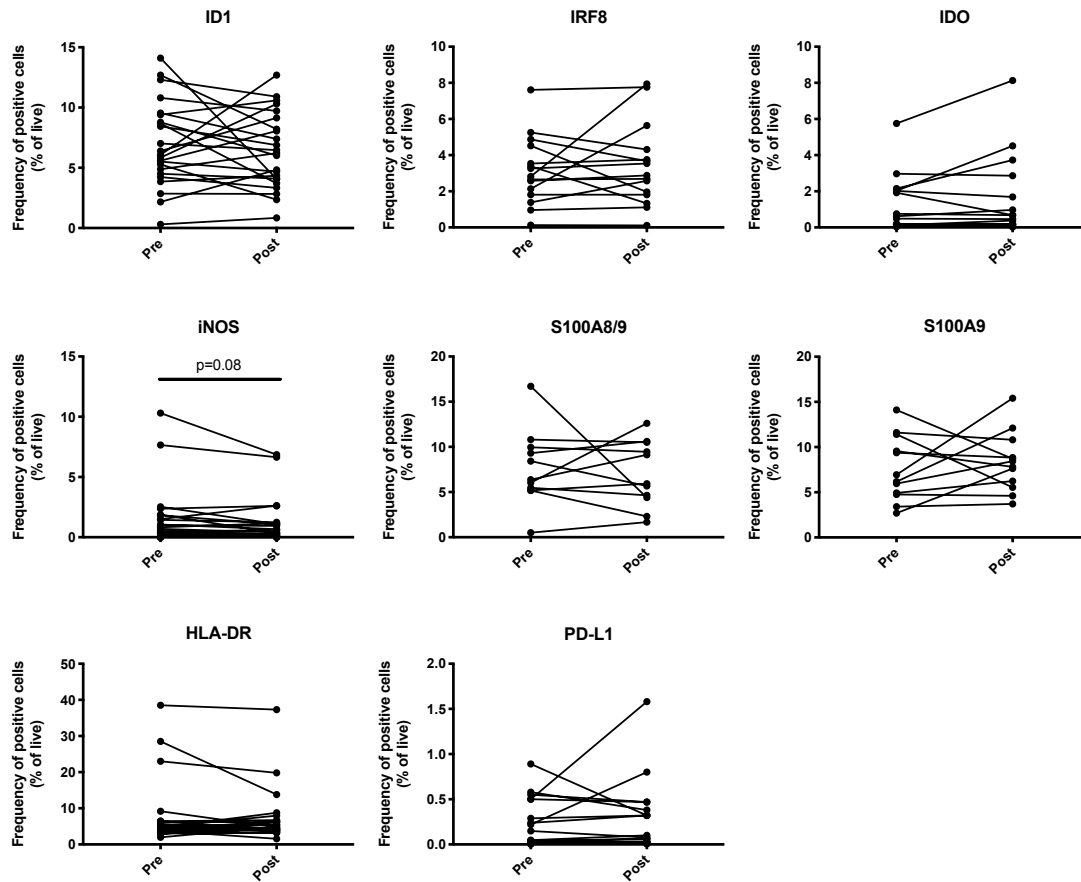
**Supplementary fig. 2** Percentages of monocytic MDSC, defined as  $CD33^+CD11b^+CD14^+HLA-DR^{low}$ , of the live cell population in the blood of melanoma patients before and after surgical removal of melanoma metastases.

### Supplementary figure 3



**Supplementary fig. 3** Percentages of monocytes positive for the indicated markers in the blood of melanoma patients before and after surgical removal of melanoma metastases.

## Supplementary figure 4



**Supplementary fig. 4** Percentages of monocytic MDSC positive for the indicated markers within the live cell population in the blood of melanoma patients before and after surgical removal of melanoma metastases.