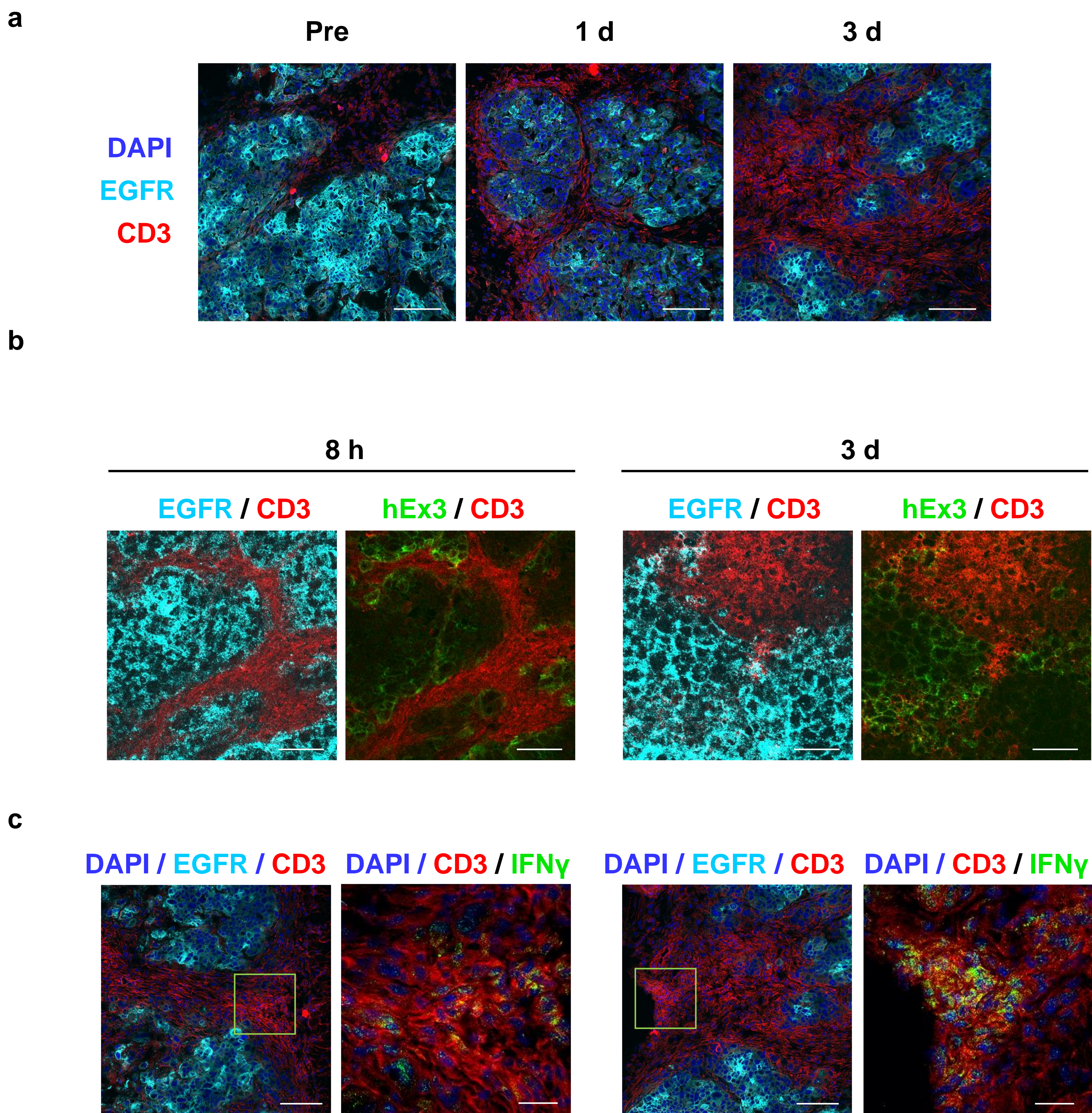


Supplementary Fig. 1 Safety evaluation of hEx3 administration in mice. (a) H&E staining of mouse lung and liver 1 week after injection of hEx3 or saline (vehicle). Scale bar = 100 μ m. (b) Size (left) and weight (right) measurements of mouse spleen treated by hEx3 or saline (vehicle) are shown. Each weight value is normalized against individual body weight, as indicated [spleen weight / body weight (mg/g)]. Error bars represent means \pm SD (n=3). n.s. = not significant



Supplementary Fig. 2 Ex vivo staining of hEx3-treated tumor.

(a) Distribution of CD3-positive T cells (Red) within tumor tissue at pre-administration (Pre) and 1 day (1d) or 3 days (3d) after hEx3 administration. DAPI staining (nucleus) is shown in blue, and EGFR in cyan. Scale bar = 100 μm . (b) Ex vivo immunohistochemical analyses at 8 h and 3 days after hEx3 administration with staining for hEx3 (green), EGFR (cyan), and CD3 (red). Scale bar = 50 μm . (c) Fluorescence staining for IFN γ (green) in tumor tissue with lower- (left) or higher-cell infiltration area (right) 3 days after hEx3 administration. Scale bars = 100 μm (low-power fields in left panels), 25 μm (high-power fields in right panels). Nucleus (blue), EGFR (cyan), CD3 (red)