

SUPPLEMENTARY INFORMATION.

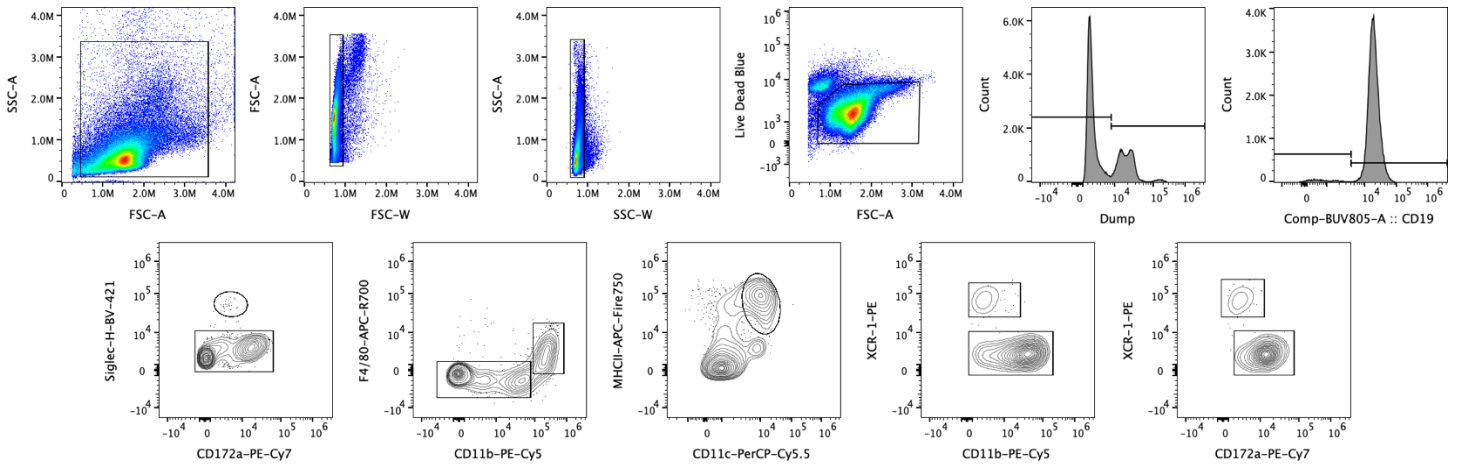


Fig. S1. Gating Strategy for Immune Cell Subsets shown in Figs. 2 and 6C). Dump+ (CD3⁺ (T cells), CD49b⁺ (NK Cells), and Ly-6G⁺ (neutrophils)) were gated out of live, singlet splenocytes. Next, B cells (Dump-CD19⁺) were gated. Dump-CD19⁻ were then gated based on Siglec-H expression: Siglec-H⁺ (pDC) and Siglec-H⁻. F4/80 was then used to gate macrophages (Macs; F4/80⁺). DCs were gated out of the F4/80⁻ cells based on their high expression of MHCII and CD11c. XCR-1 and CD11b or XCR-1 and CD172a were then used to separate cDC1 (XCR-1⁺CD11b⁻CD172a⁻) from cDC2 (XCR-1⁻CD11b⁺CD172a⁺).

Summary:

B cells: (Dump-CD19⁺)

pDC: (Dump-CD19⁻SiglecH⁺)

Macrophages: (Dump-CD19⁻SiglecH⁻F4/80⁺)

cDC1: (Dump-CD19⁻SiglecH⁻F4/80⁻MHCII⁺CD11c⁺XCR⁺CD11b⁻CD172a⁻)

cDC2 : (Dump-CD19⁻SiglecH⁻F4/80⁻MHCII⁺CD11c⁺XCR⁻CD11b⁺CD172a⁺)