

Supplementary Material

High interindividual variability in LDL-cholesterol reductions after inclisiran administration in a “real-world” setting in Germany

Makhmudova U^{1,8,9}, Schatz U², Perakakis N^{2,3,4}, Kassner U⁵, Schumann F⁵, Axthelm C⁶, Stürzebecher P⁷, Sinning DL⁸, Doevelaar A¹⁰, Rohn B¹⁰, Westhoff T¹⁰, Vogt A¹¹, Scholl M¹², Kästner U¹², Geiling J-A¹, Stach K¹³, Mensch J¹⁴, Lorenz E¹⁵, Paitazoglou C^{16,17}, Eitel I^{16,17}, Bäßler A¹⁸, Steinhagen-Thiessen E^{5,9,14}, Koenig W^{15,19,20}, Schulze PC¹, Landmesser U^{8,9}, Laufs U⁷, Weingärtner O¹ for the GERMAN INCLISIRAN NETWORK (GIN)

¹Klinik für Innere Medizin I, University Hospital Jena, Jena

²Department of Internal Medicine III, University Hospital Carl Gustav Carus, Technische Universität Dresden, Dresden, Germany

³Paul Langerhans Institute Dresden (PLID), Helmholtz Center Munich, University Hospital and Faculty of Medicine, TU Dresden, Dresden, Germany

⁴German Center for Diabetes Research (DZD e.V.), Neuherberg, Germany

⁵Clinic for Endocrinology and Metabolic Medicine, Charité – University Medicine Berlin, Berlin

⁶Cardiologicum Dresden and Pirna, Dresden, Germany

⁷Klinik und Poliklinik für Kardiologie, Universitätsklinikum Leipzig, Germany;

⁸Deutsches Herzzentrum der Charité, Department of Cardiology, Angiology and Intensive Care Medicine, Berlin, Germany

⁹Friede Springer Cardiovascular Prevention Center, Berlin, Germany

¹⁰Medical Clinic I, Marien Hospital Herne, University Hospital of the Ruhr-University of Bochum, Herne, Germany

¹¹Medical Clinic and Policlinic IV, University Hospital München, Germany

¹²Nephrocare Mühlhausen GmbH, Medical Care Centre, Mühlhausen/Thüringen, Germany

¹³University Hospital Mannheim, Medical Clinic V, Mannheim, Germany

¹⁴Institute for Clinical Chemistry, University Medicine Rostock, Rostock, Germany

¹⁵Deutsches Herzzentrum München, Technische Universität München, Munich, Germany

¹⁶Medizinische Klinik II, Universitätsklinikum Schleswig-Holstein, Lübeck, Germany

¹⁷German Centre for Cardiovascular Research (DZHK), partner site Hamburg-Kiel-Lübeck, Lübeck, Germany

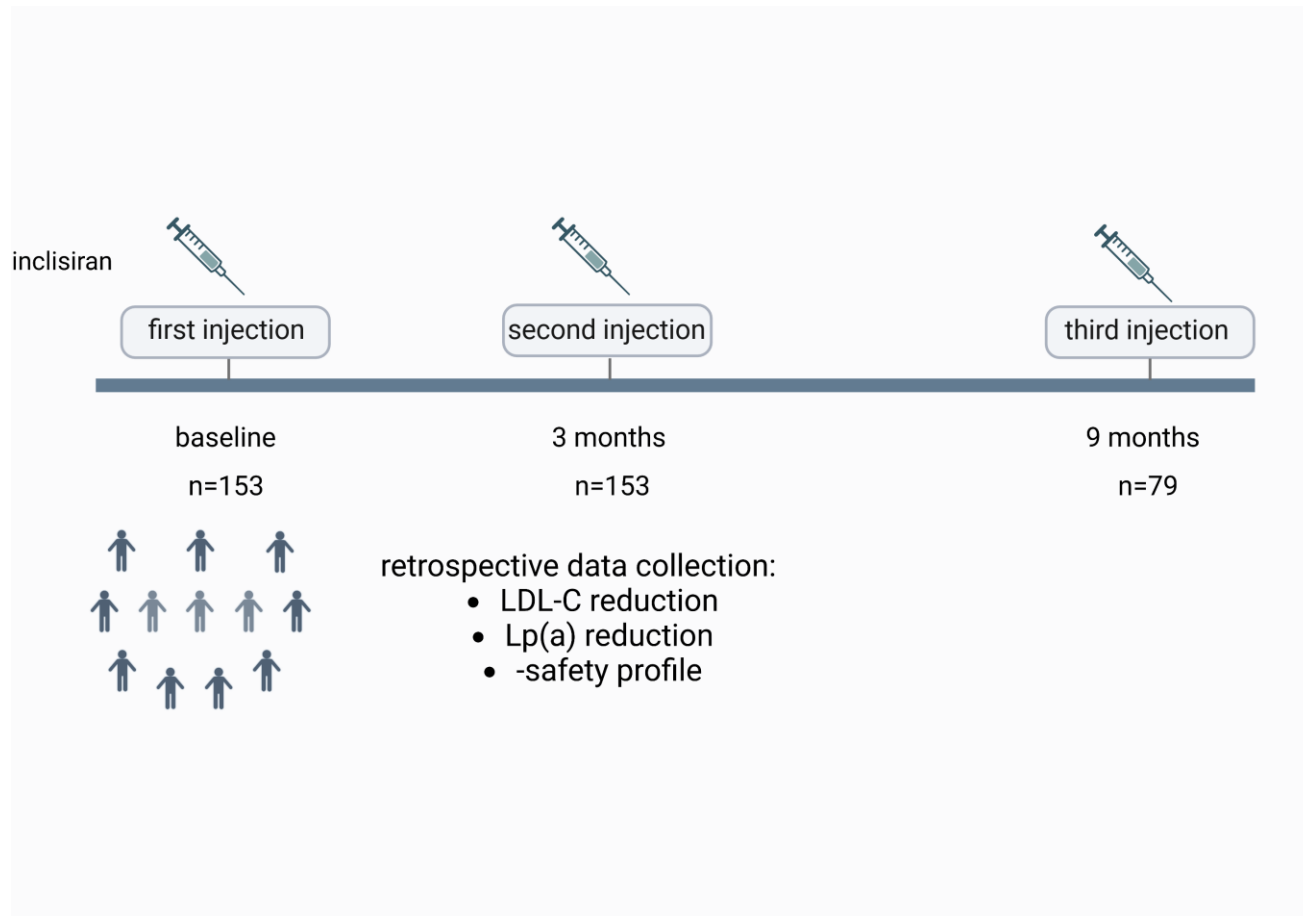
¹⁸ Klinik für Innere Medizin II, Universitätsklinikum Regensburg, Regensburg, Germany

¹⁹German Centre for Cardiovascular Research (DZHK), partner site Munich Heart Alliance, Munich, Germany

²⁰Institute of Epidemiology and Medical Biometry, University of Ulm, Ulm, Germany

German Inclisiran Network

14 sites

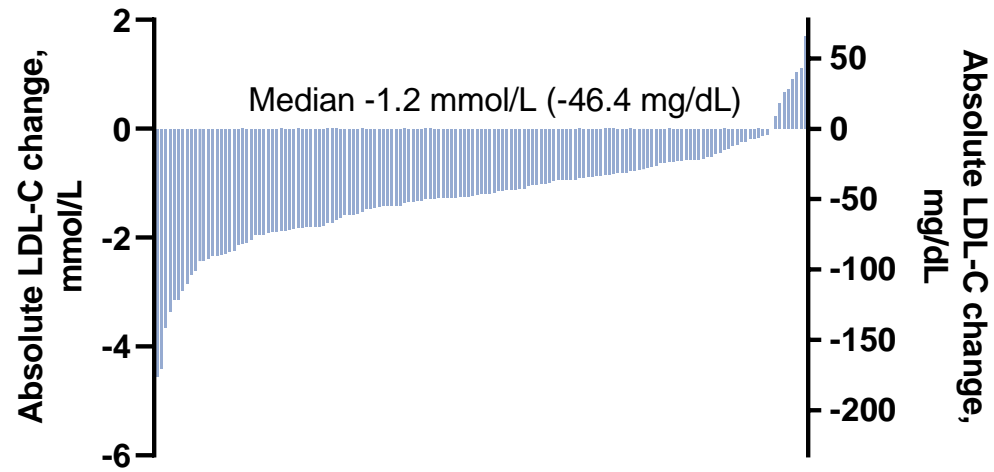


Center	
1	University Hospital Leipzig
2	University Hospital Carl Gustav Carus, Dresden
3	Munich Heart Center
4	Charité University Hospital (Deutsches Herzzentrum der Charité)
5	Charité University Hospital (Department of Endocrinology)
6	Jena University Hospital
7	Dresden outpatient clinic "Cardiologicum Dresden und Pirna"
8	Nephocare Mühlhausen GmbH
9	University Hospital of the Ruhr-University of Bochum
10	University Medicine Rostock
11	University Hospital Munich
12	University Hospital Mannheim
13	University Hospital Lübeck
14	University Hospital Regensburg

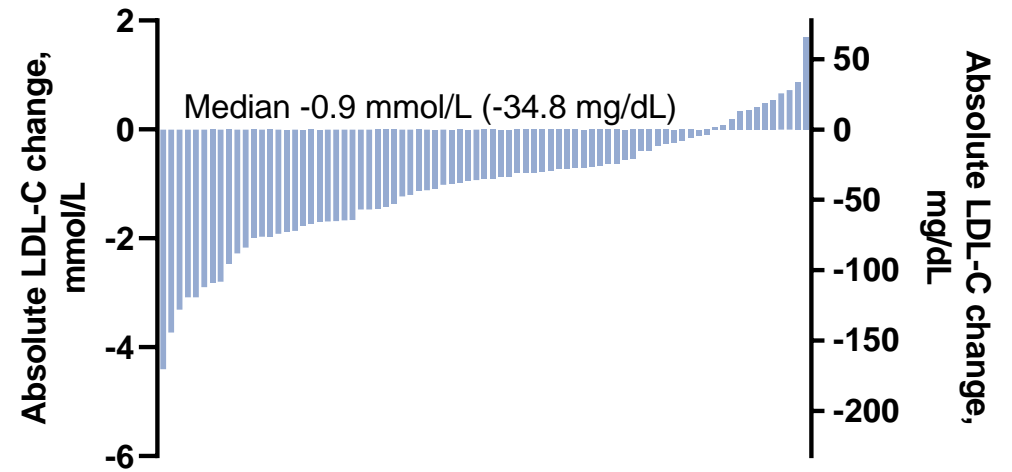
Supplementary figure 1. Study description. Created with BioRender.com

Supplementary Table 1. List of participating sites.

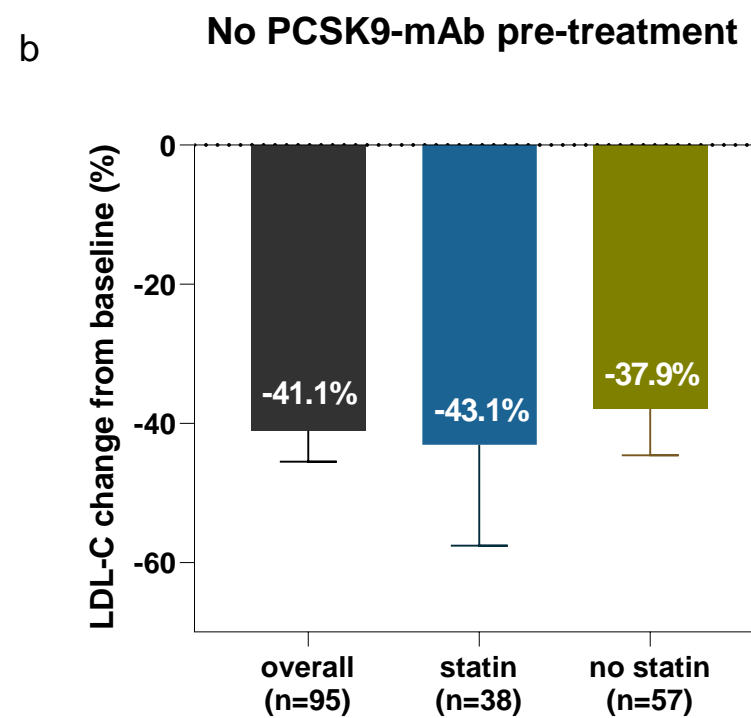
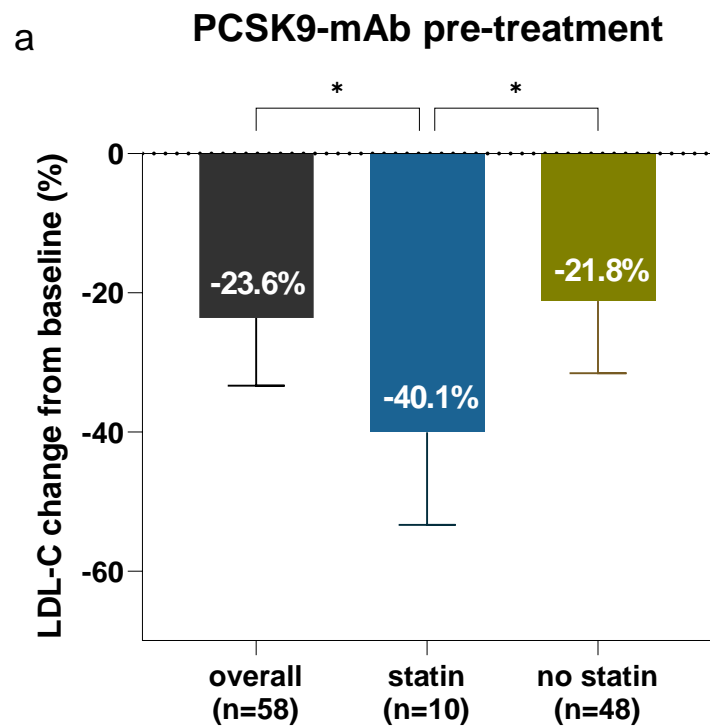
3 months (n=153)



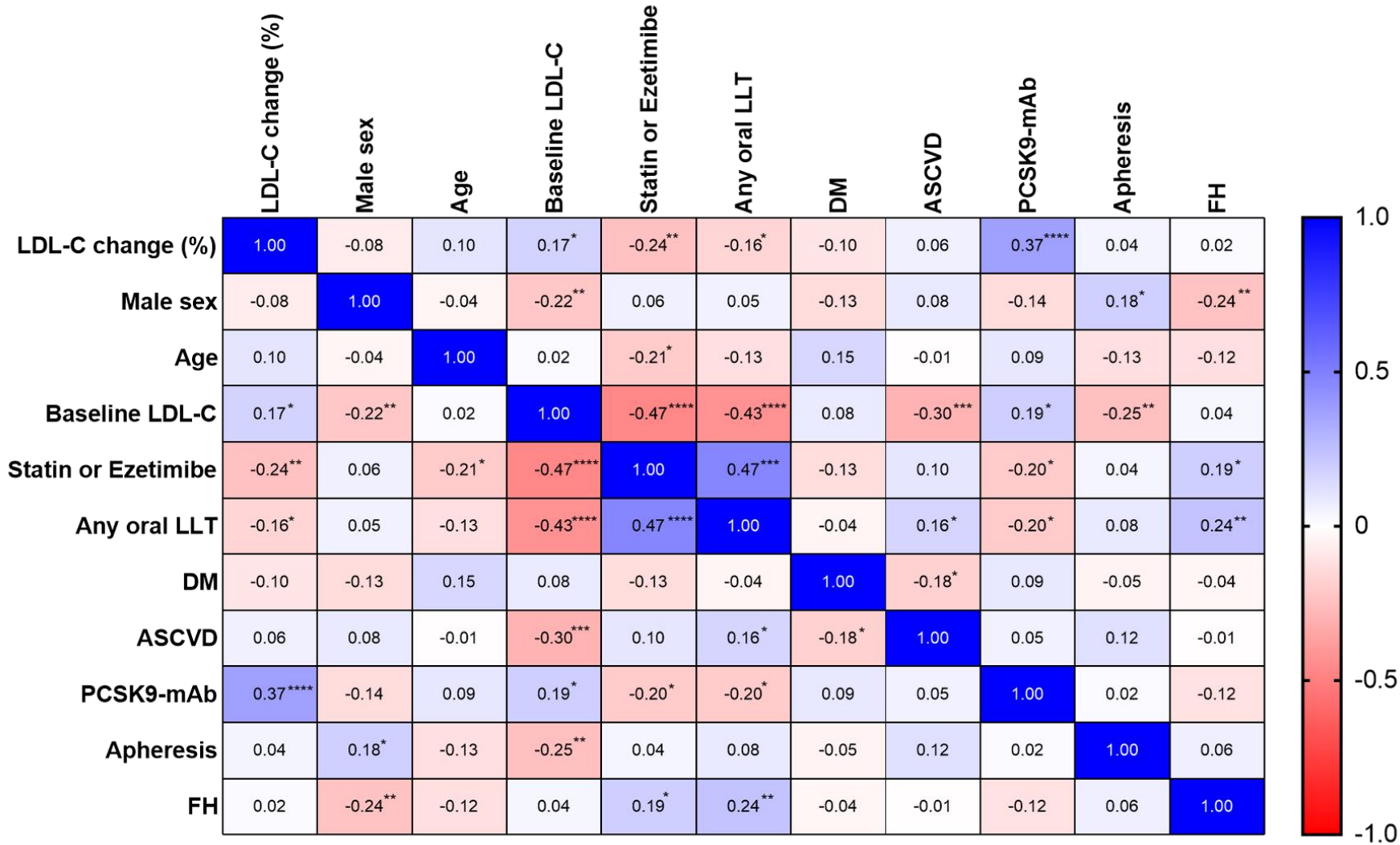
9 months (n=79)



Supplementary figure 2. Absolute changes in LDL-C at 3 and 9 months.



Supplementary figure 3. LDL-C change from baseline (%) in patients PCSK9-mAb history (a) vs no-PCSK9-mAb history (b) shown as median and IQR.

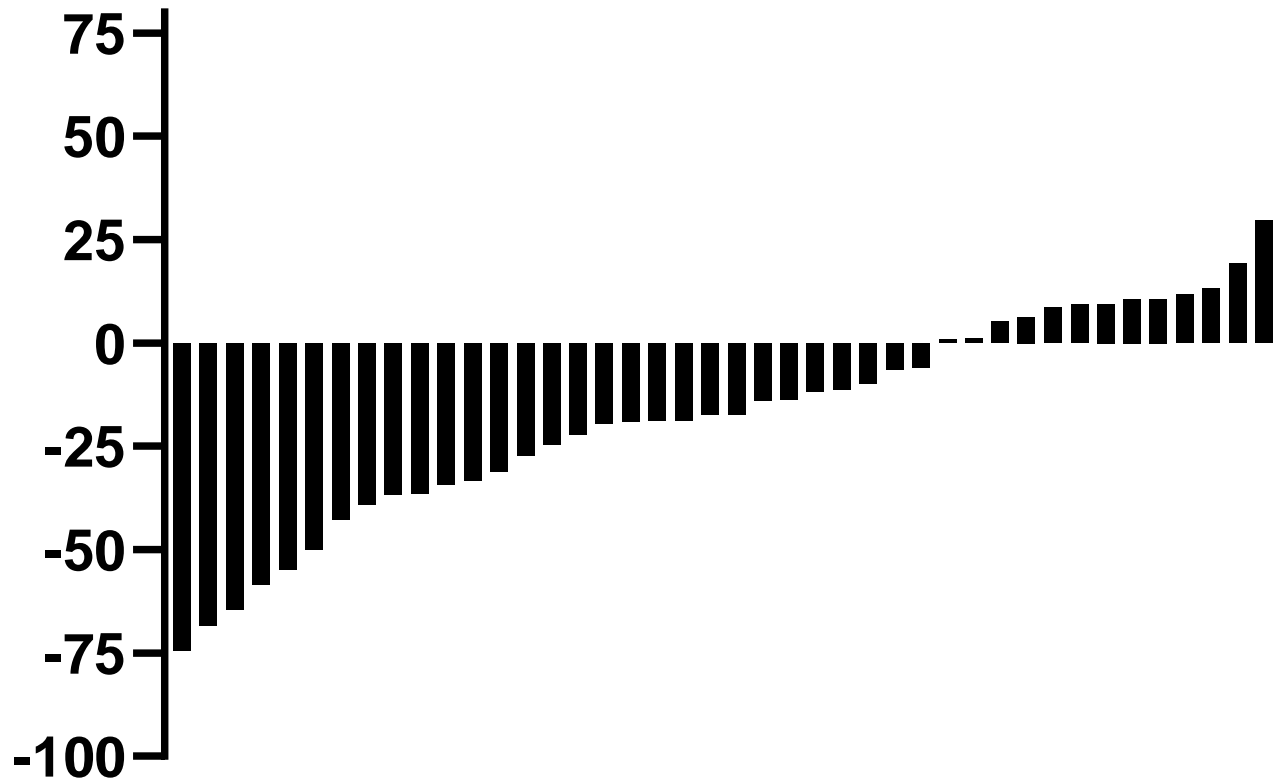


Supplementary figure 4. Heatmap correlations between relative LDL-C change from baseline (%) and demographic and clinical parameters.

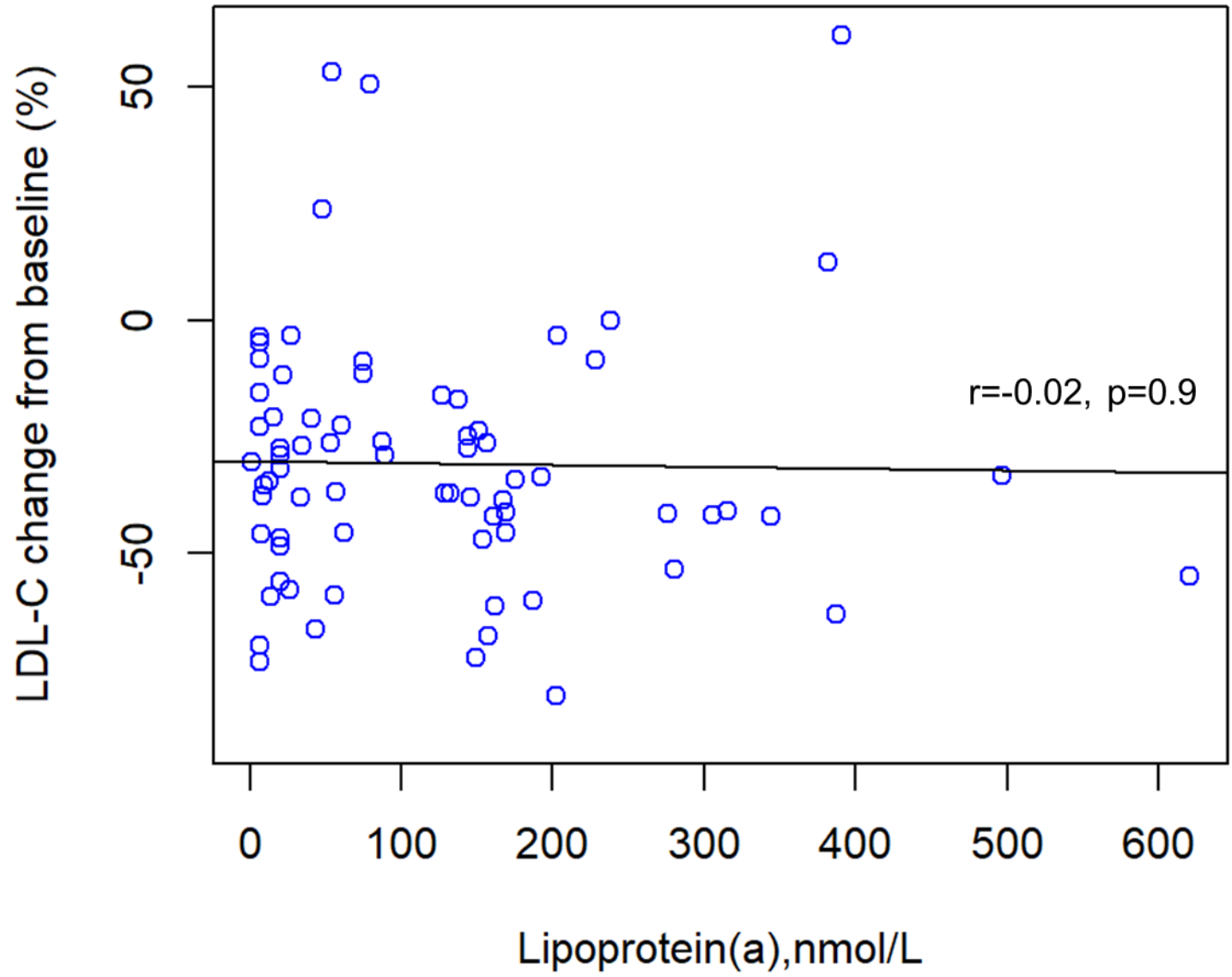
*p<0.05, **p<0.01, ***p<0.001, ****p<0.0001

ASCVD, atherosclerotic cardiovascular disease; DM, diabetes mellitus, PCSK9-mAb, proprotein convertase subtilisin/kexin type 9 monoclonal antibody.

Lp(a) change from baseline (%)



Supplementary figure 5. Waterfall plot of Lp(a) change from baseline (%) after inclisiran injection (3 months). Waterfall plot shows individual variations in Lp(a) reduction in 42 patients, qualified for the analysis.



Supplementary figure 6. Correlation between LDL-C change from baseline (%) and baseline lipoprotein(a) concentrations.