

A plasma fatty acid profile associated to type 2 diabetes development: from the CORDIOPREV study.

Alejandro Villasanta-Gonzalez, Juan Francisco Alcalá-Díaz, Cristina Vals-Delgado, Antonio Pablo Arenas, Magdalena P. Cardelo, Juan Luis Romero-Cabrera, Fernando Rodriguez-Cantalejo, Javier Delgado-Lista, Maria M. Malagon, Pablo Perez-Martinez, Matthias B. Schulze, Antonio Camargo*, Jose Lopez-Miranda*.

¹Lipids and Atherosclerosis Unit, GC9 Nutrigenomics, Maimonides Biomedical Research Institute of Cordoba (IMIBIC), Reina Sofia University Hospital, University of Cordoba, Spain.

²CIBER Fisiopatología de la Obesidad y Nutrición (CIBEROBN), Instituto de Salud Carlos III, Cordoba, Spain.

³Department of Cell Biology, Physiology and Immunology, University of Cordoba, Córdoba, Spain.

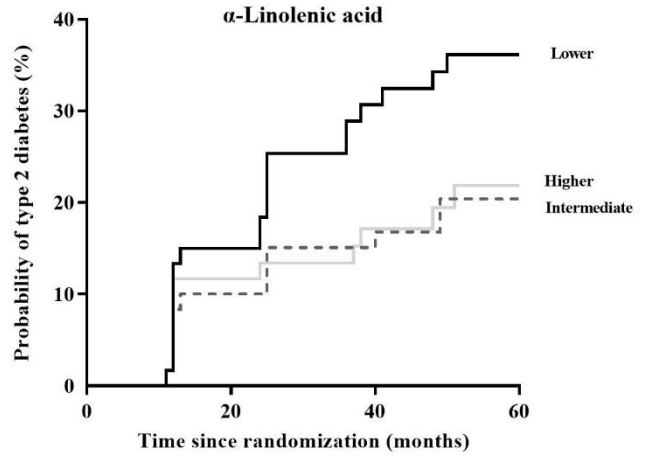
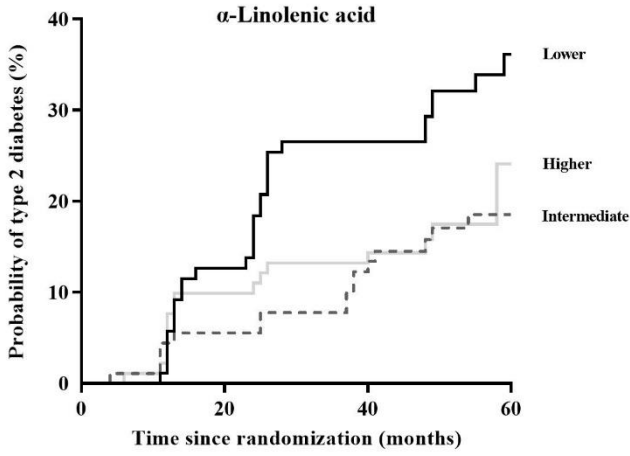
⁴German Center for Diabetes Research, München-Neuherberg, Germany.

⁵Department of Molecular Epidemiology, German Institute of Human Nutrition Potsdam-Rehbrücke, Nuthetal, Germany mschulze@dife.de.

⁶Germany Institute of Nutrition Science, University of Potsdam, Nuthetal, Germany.

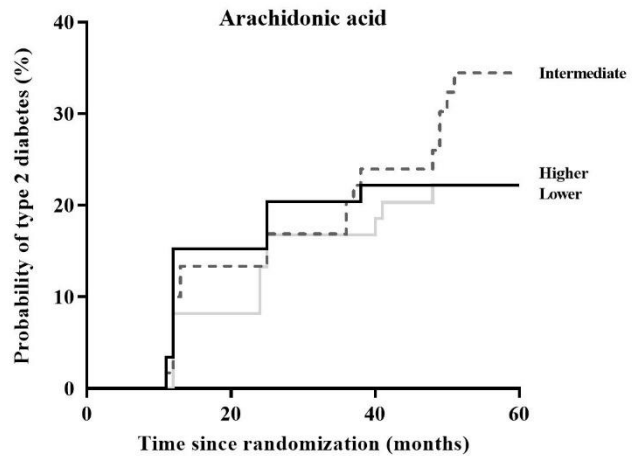
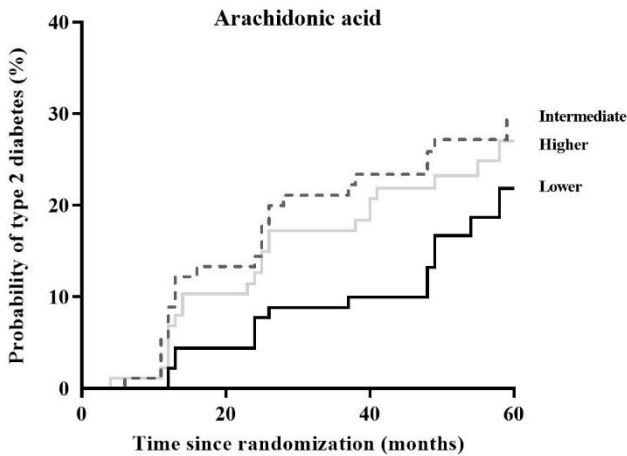
*These authors contributed equally to this work.

Corresponding author: Prof. Jose López-Miranda and Antonio Camargo, Lipids and Atherosclerosis Unit. Reina Sofia University Hospital. University of Cordoba. Av. Menendez Pidal, s/n. 14004 Córdoba, Spain. Phone: 34-957012830. FAX: +34-957218250 email: jlopezmir@uco.es and antonio.camargo@imibic.org.



Training		HR	95% CI for HR	
			Lower	Upper
Lower (ref.)		1.00	1.00	1.00
Intermediate	Unadjusted	0.48	0.26	0.88
	Adjusted*	0.42	0.22	0.82
Higher	Unadjusted	0.55	0.30	1.00
	Adjusted*	0.56	0.30	1.07

Validation		HR	95% CI for HR	
			Lower	Upper
Lower (ref.)		1.00	1.00	1.00
Intermediate	Unadjusted	0.52	0.26	1.06
	Adjusted*	0.62	0.30	1.31
Higher	Unadjusted	0.56	0.28	1.14
	Adjusted*	0.61	0.29	1.29



Training		HR	95% CI for HR	
			Lower	Upper
Lower (ref.)		1.00	1.00	1.00
Intermediate	Unadjusted	1.72	0.91	3.27
	Adjusted*	1.91	0.98	3.74
Higher	Unadjusted	1.52	0.77	2.92
	Adjusted*	1.74	0.85	3.55

Validation		HR	95% CI for HR	
			Lower	Upper
Lower (ref.)		1.00	1.00	1.00
Intermediate	Unadjusted	1.46	0.72	2.96
	Adjusted*	1.46	0.69	3.08
Higher	Unadjusted	0.96	0.44	2.06
	Adjusted*	1.02	0.44	2.34