

SUPPLEMENTARY DATA- Basic Research in Cardiology

Uncropped Western blots

The inotropic agent digitoxin strengthens desmosomal adhesion in cardiac myocytes in an ERK1/2-dependent manner

Camilla Schinner^{1,2+}, Silvana Olivares-Florez¹⁺, Angela Schlipp¹, Sebastian Trenz¹, Manouk Feinendegen¹, Heinrich Flaswinkel³, Ellen Kempf¹, Desalegn Tadesse Egu¹, Sunil Yeruva¹, and Jens Waschke^{1*}

¹Faculty of Medicine, Ludwig-Maximilians-Universität (LMU) Munich, Munich, Germany

²Department of Biomedicine, University of Basel, Basel, Switzerland

³Department of Biology II, Ludwig-Maximilians-Universität (LMU) Munich, Munich, Germany

+Authors contributed equally.

***Corresponding author:**

Jens Waschke, Faculty of Medicine, Ludwig-Maximilians-Universität (LMU) Munich, Pettenkofferstraße 11, 80336 Munich, Germany; Phone: +49-89-2180-72610; Fax: +49-89-2180-72602; jens.waschke@med.uni-muenchen.de

Uncropped Western blots with marker images corresponding to bands shown in the indicated figures

Band signal image shown on the left, overlay of bands with corresponding marker image shown on the right. To enable more protein incubations some blots were cut at 70 kDa and incubated separately. Bands appearing from previous antibody incubations are indicated in brackets and smaller font size. Blots are shown in order of antibody incubation. Antibody species: “m” = mouse; “rb” = rabbit. Prestained protein ladder PageRuler plus (10 – 250 kDa, Thermo Scientific) was used as size marker for all blots.

Supplementary Data – uncropped Western blots

Figure 5A

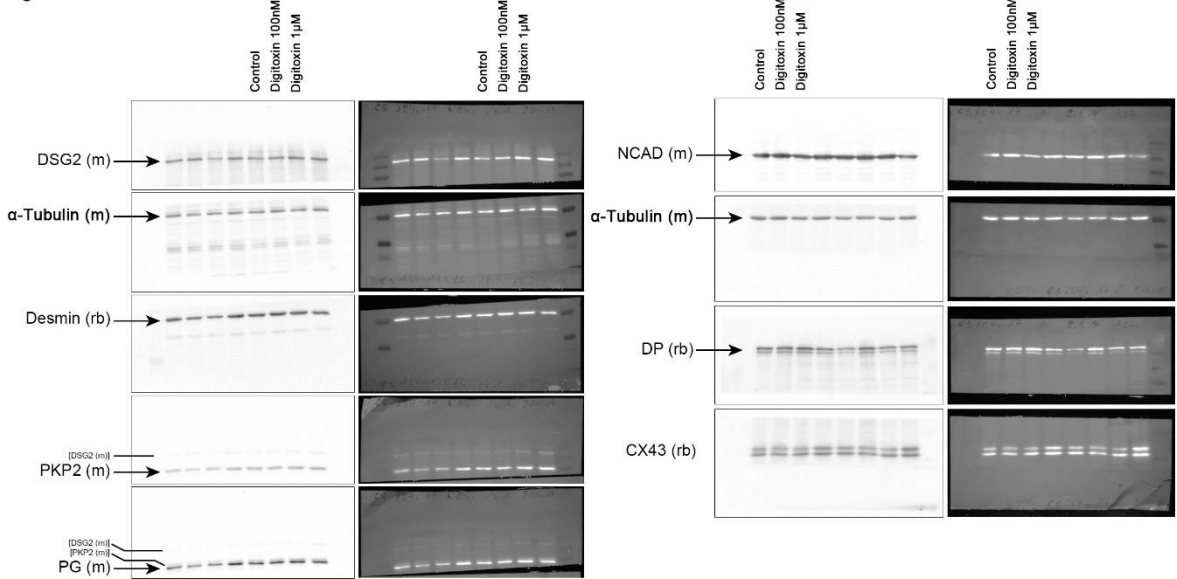
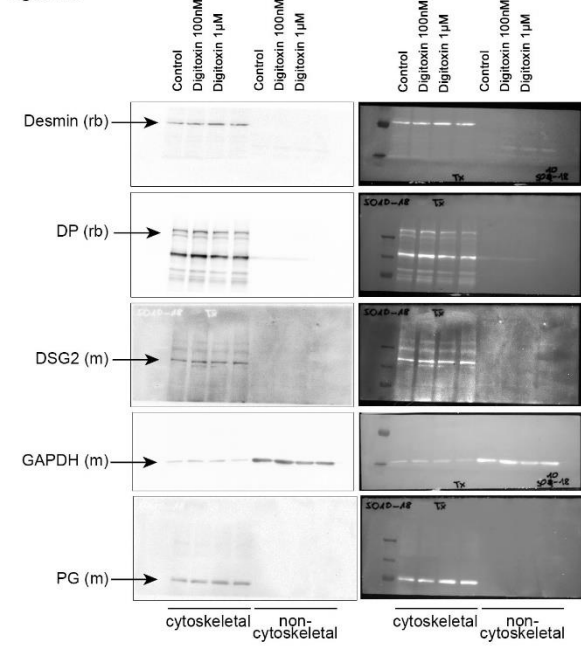
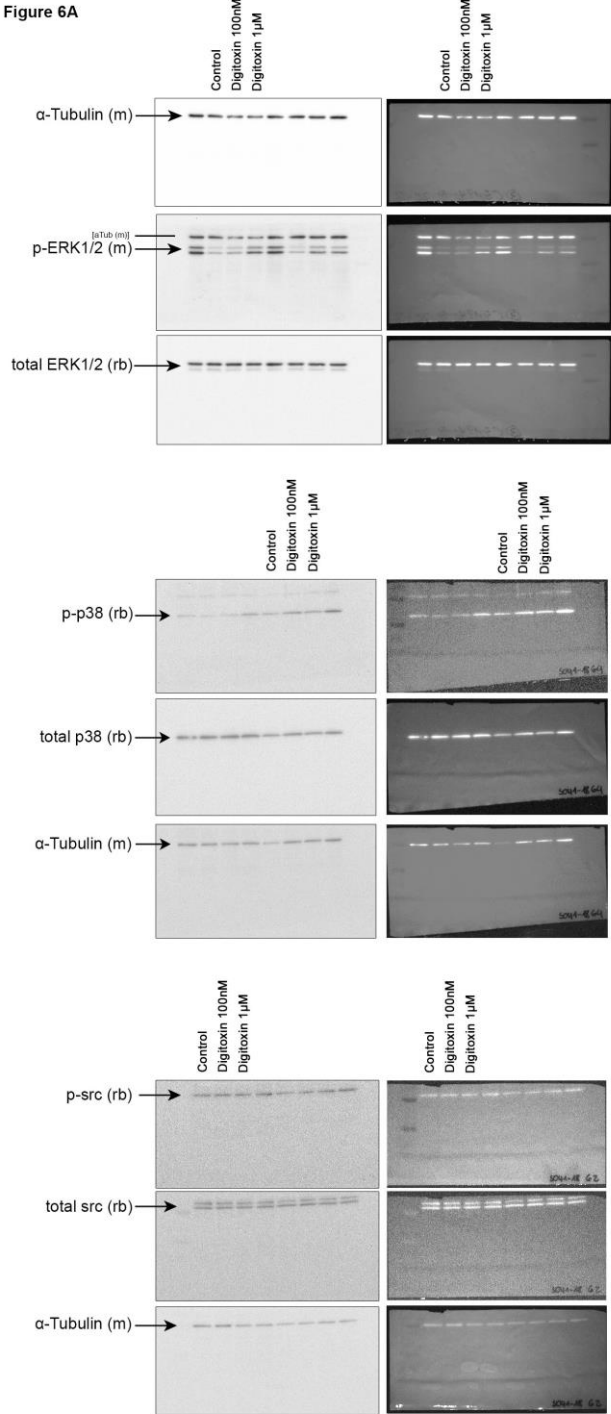


Figure 5B

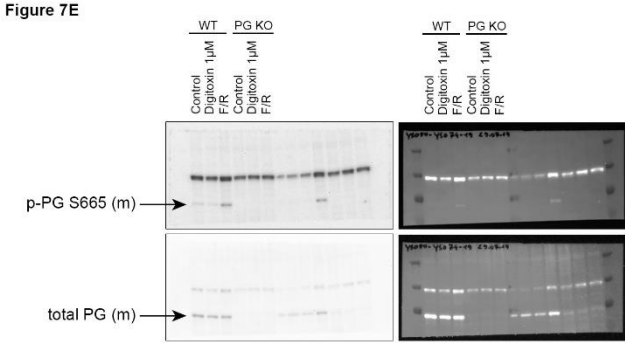
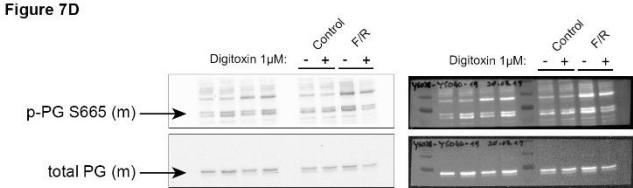
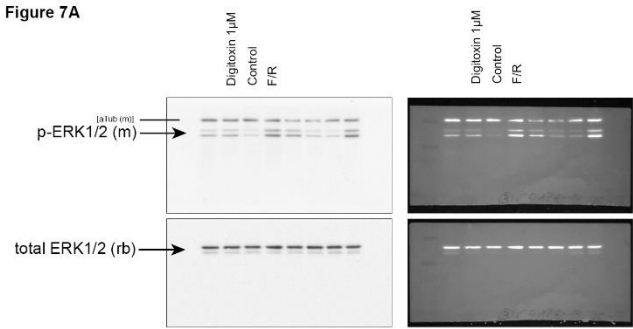


Supplementary Data – uncropped Western blots

Figure 6A

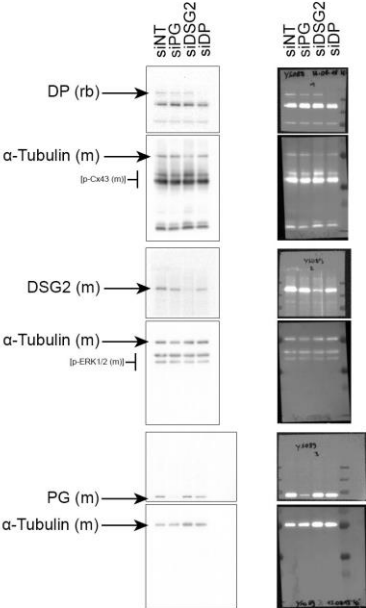


Supplementary Data – uncropped Western blots



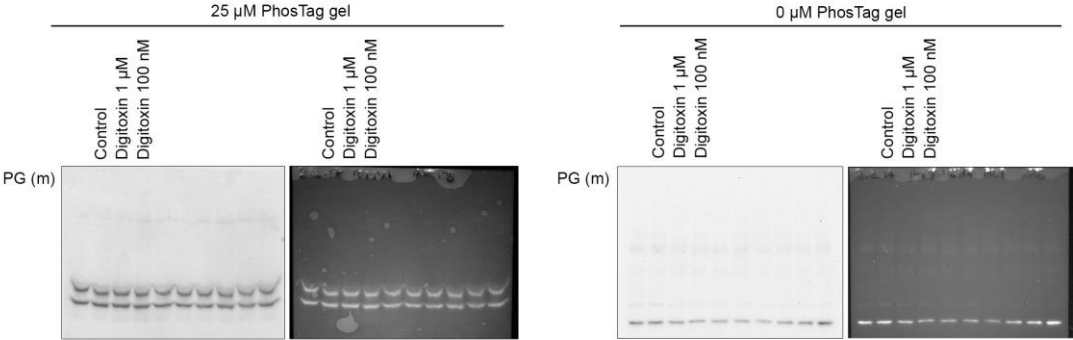
Supplementary Data – uncropped Western blots

Supplementary Figure 2

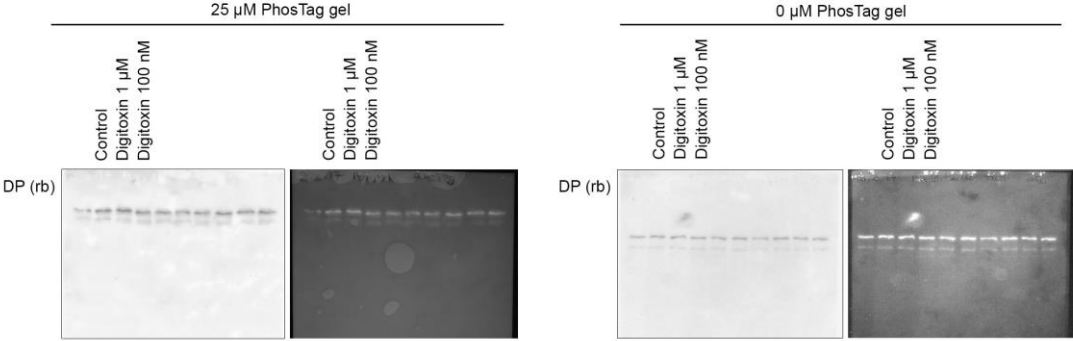


Supplementary Data – uncropped Western blots

Supplementary Figure 3A

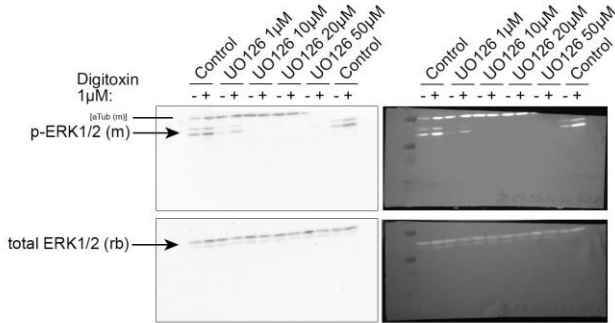


Supplementary Figure 3B



Supplementary Data – uncropped Western blots

Supplementary Figure 4



Supplementary Data – uncropped Western blots

Supplementary Figure 5A

