

Elderly-onset paroxysmal kinesigenic dyskinesia: a case report

Lulu Yao¹, Wei Liang¹, Shanshan Mei^{2,3}, Erhe Xu^{2,3}, Xiaobo Huang^{1*}

¹Department of Traditional Chinese Medicine, Xuanwu Hospital, Capital Medical University, Beijing, China.

²Department of Neurology, Xuanwu Hospital, Capital Medical University, Beijing, China.

³National Clinical Research Center for Geriatric Disorders, Beijing, China

*** Correspondence:**

Xiaobo Huang

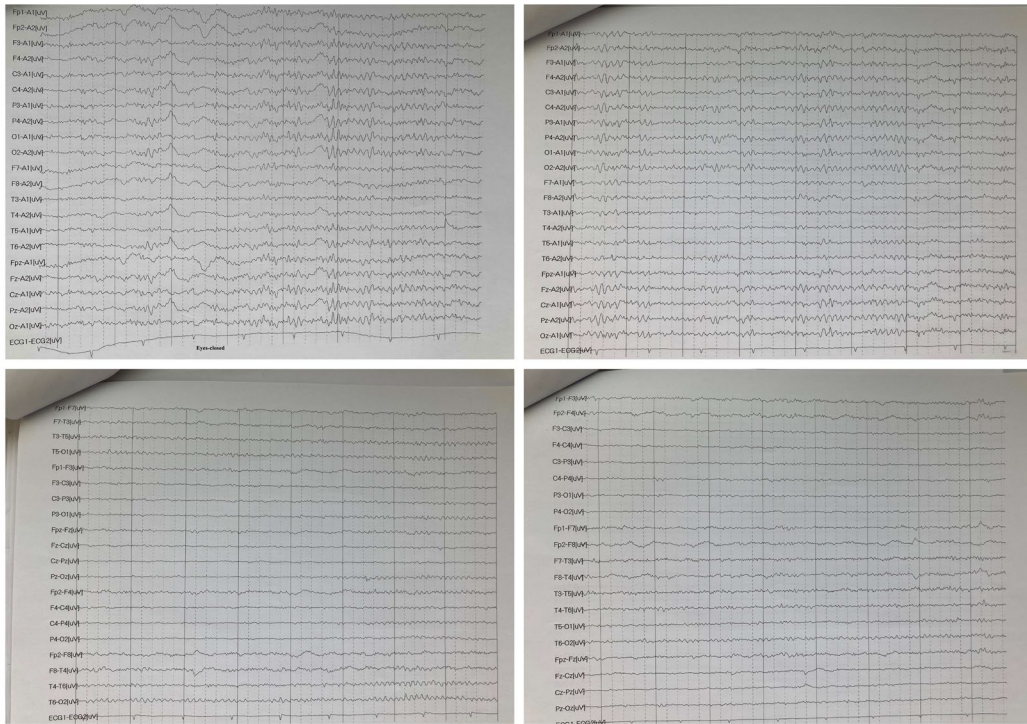
Department of Traditional Chinese Medicine, Xuanwu Hospital, Capital Medical University

No.45 Changchun Street, Xicheng District

Beijing 100053, China

Tel: 83198327

Email: huangxiaobo@xwh.ccmu.edu.cn



Supplementary Fig. 1 No abnormality was found in the continuous video-EEG monitoring. In eyes-closed condition, occipital alpha rhythms were recorded in background EEG activity.



Supplementary Fig. 2 The drug eruptions and pruritic red macules were distributed to the patient's trunk and extremities.



Topic	Item	Checklist item description	Reported on Line
Title	1	The diagnosis or intervention of primary focus followed by the words “case report”	Line 1
Key Words	2	2 to 5 key words that identify diagnoses or interventions in this case report, including "case report"	Lines 33-34
Abstract (no references)	3a	Introduction: What is unique about this case and what does it add to the scientific literature?	Lines 29-32
	3b	Main symptoms and/or important clinical findings	Lines 29-32
	3c	The main diagnoses, therapeutic interventions, and outcomes	Lines 25-27
	3d	Conclusion—What is the main “take-away” lesson(s) from this case?	Lines 30-32
Introduction	4	One or two paragraphs summarizing why this case is unique (may include references)	Lines 58-60
Patient Information	5a	De-identified patient specific information	Line 62
	5b	Primary concerns and symptoms of the patient	Lines 63-69
	5c	Medical, family, and psycho-social history including relevant genetic information	Lines 78-82
	5d	Relevant past interventions with outcomes	Lines 71-77
Clinical Findings	6	Describe significant physical examination (PE) and important clinical findings	Lines 83-86
Timeline	7	Historical and current information from this episode of care organized as a timeline	NA
Diagnostic Assessment	8a	Diagnostic testing (such as PE, laboratory testing, imaging, surveys).	Lines 86-97
	8b	Diagnostic challenges (such as access to testing, financial, or cultural)	Lines 96-97
	8c	Diagnosis (including other diagnoses considered)	Lines 98-99
	8d	Prognosis (such as staging in oncology) where applicable	NA
Therapeutic Intervention	9a	Types of therapeutic intervention (such as pharmacologic, surgical, preventive, self-care)	Lines 99-100
	9b	Administration of therapeutic intervention (such as dosage, strength, duration)	Lines 99-100
	9c	Changes in therapeutic intervention (with rationale)	Lines 102-103
Follow-up and Outcomes	10a	Clinician and patient-assessed outcomes (if available)	Lines 103-106
	10b	Important follow-up diagnostic and other test results	Lines 103-106
	10c	Intervention adherence and tolerability (How was this assessed?)	Lines 103-104
	10d	Adverse and unanticipated events	Lines 100-102
Discussion	11a	A scientific discussion of the strengths AND limitations associated with this case report	Lines 179-181
	11b	Discussion of the relevant medical literature with references	Lines 111-178
	11c	The scientific rationale for any conclusions (including assessment of possible causes)	Lines 181-184
	11d	The primary “take-away” lessons of this case report (without references) in a one paragraph conclusion	Lines 179-187
Patient Perspective	12	The patient should share their perspective in one to two paragraphs on the treatment(s) they received	NA
Informed Consent	13	Did the patient give informed consent? Please provide if requested	Yes <input checked="" type="checkbox"/> No <input type="checkbox"/>