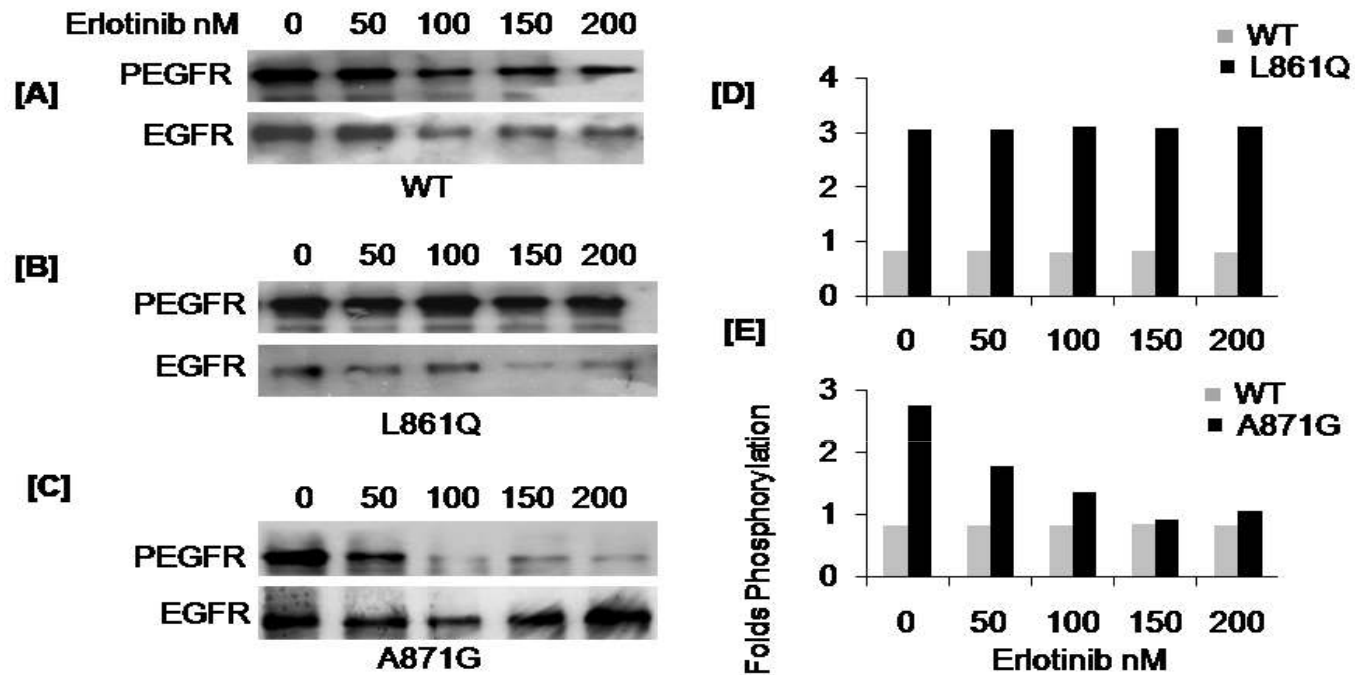


Additional file 5: Effect of Erlotinib on HEK 293 expressing wild type and mutants, L861Q and A871G



Experiment was done as described in the above figure, but cells were treated with different concentrations of Erlotinib (TKI). A. Phospho and total EGFR levels of wild type receptor. B & C. Phospho and total EGFR levels of each mutant L861Q and A871G respectively. D & E. Densitometry values of signal intensity of each mutant vs. wild type receptor