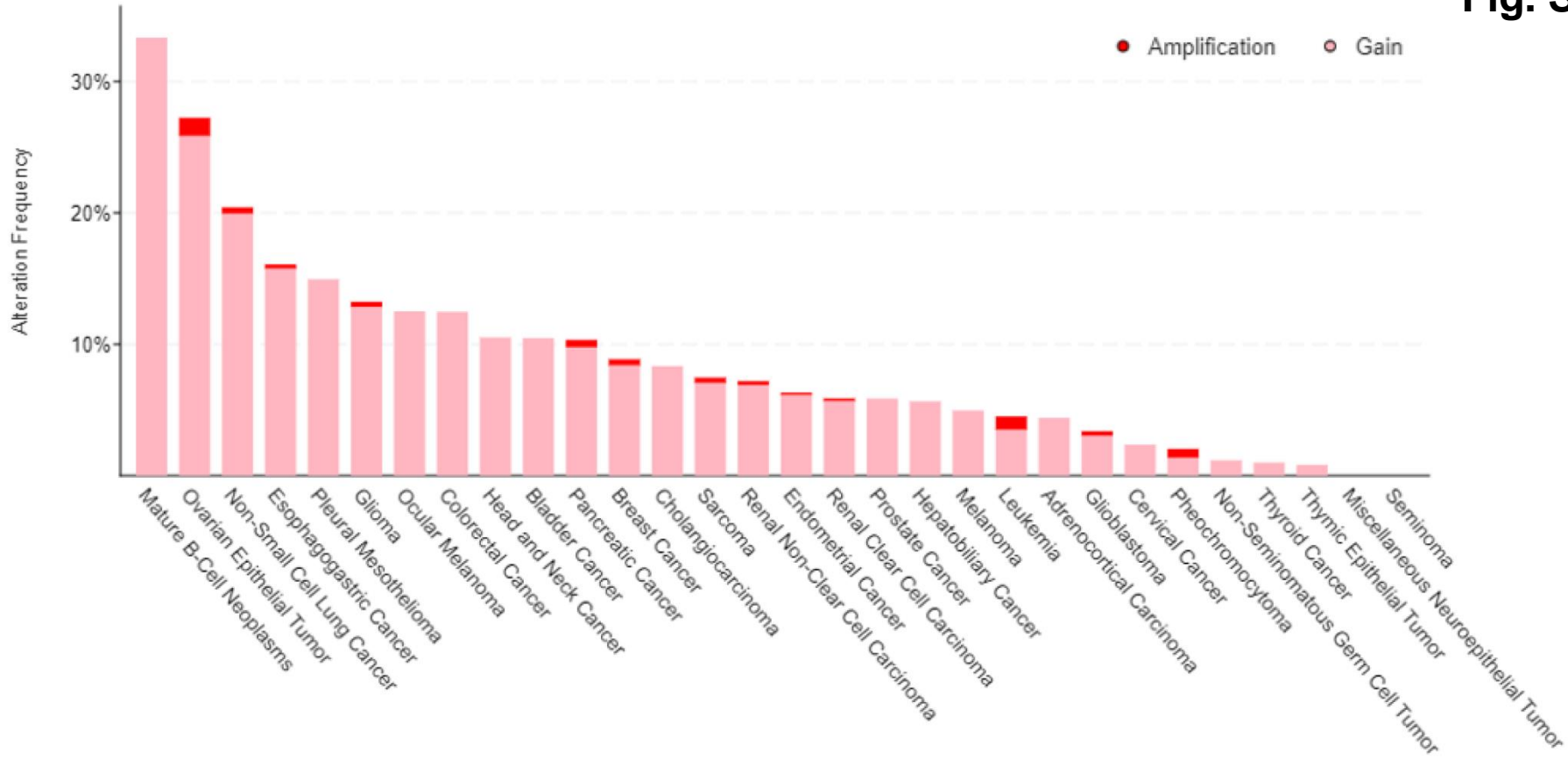
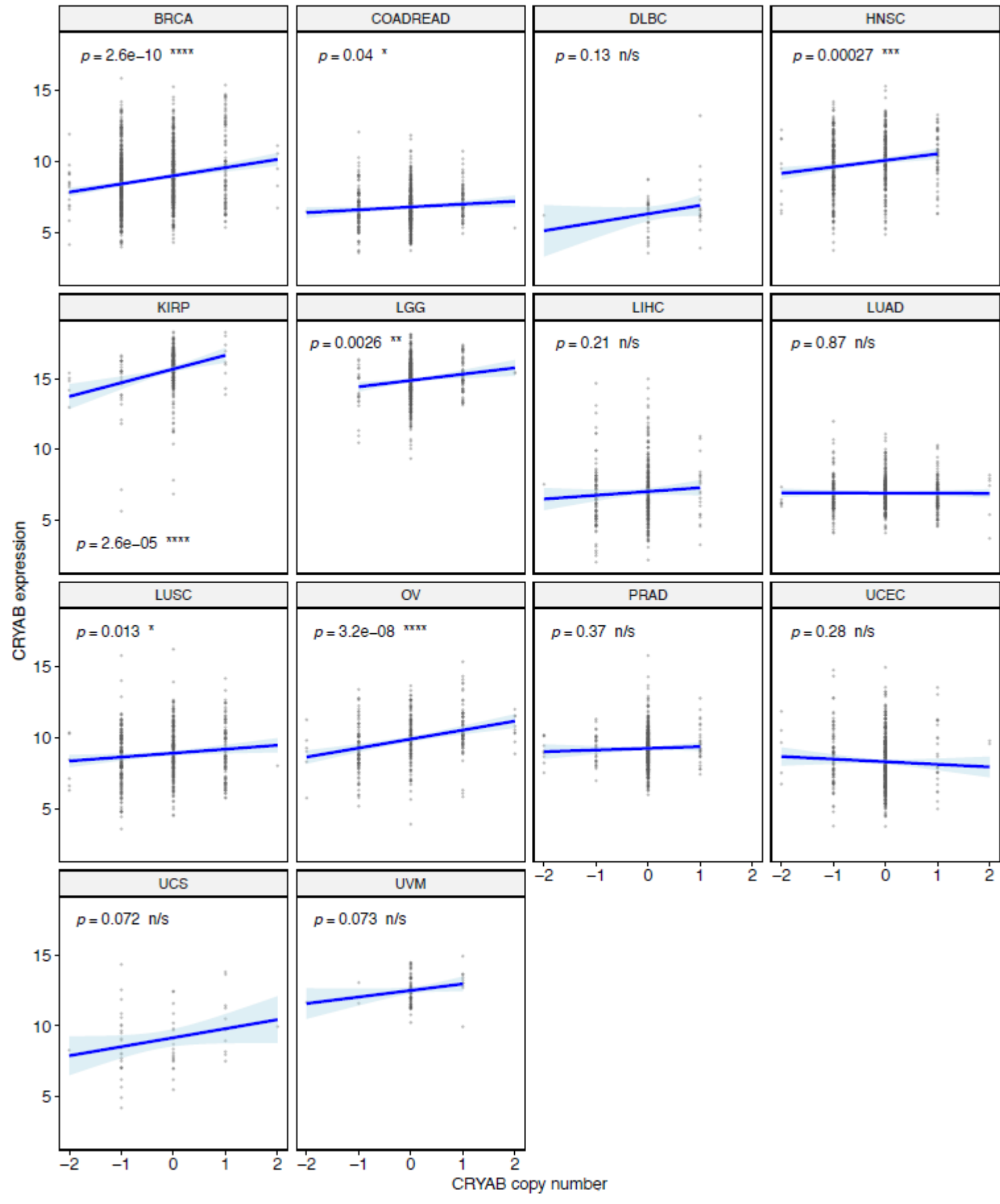
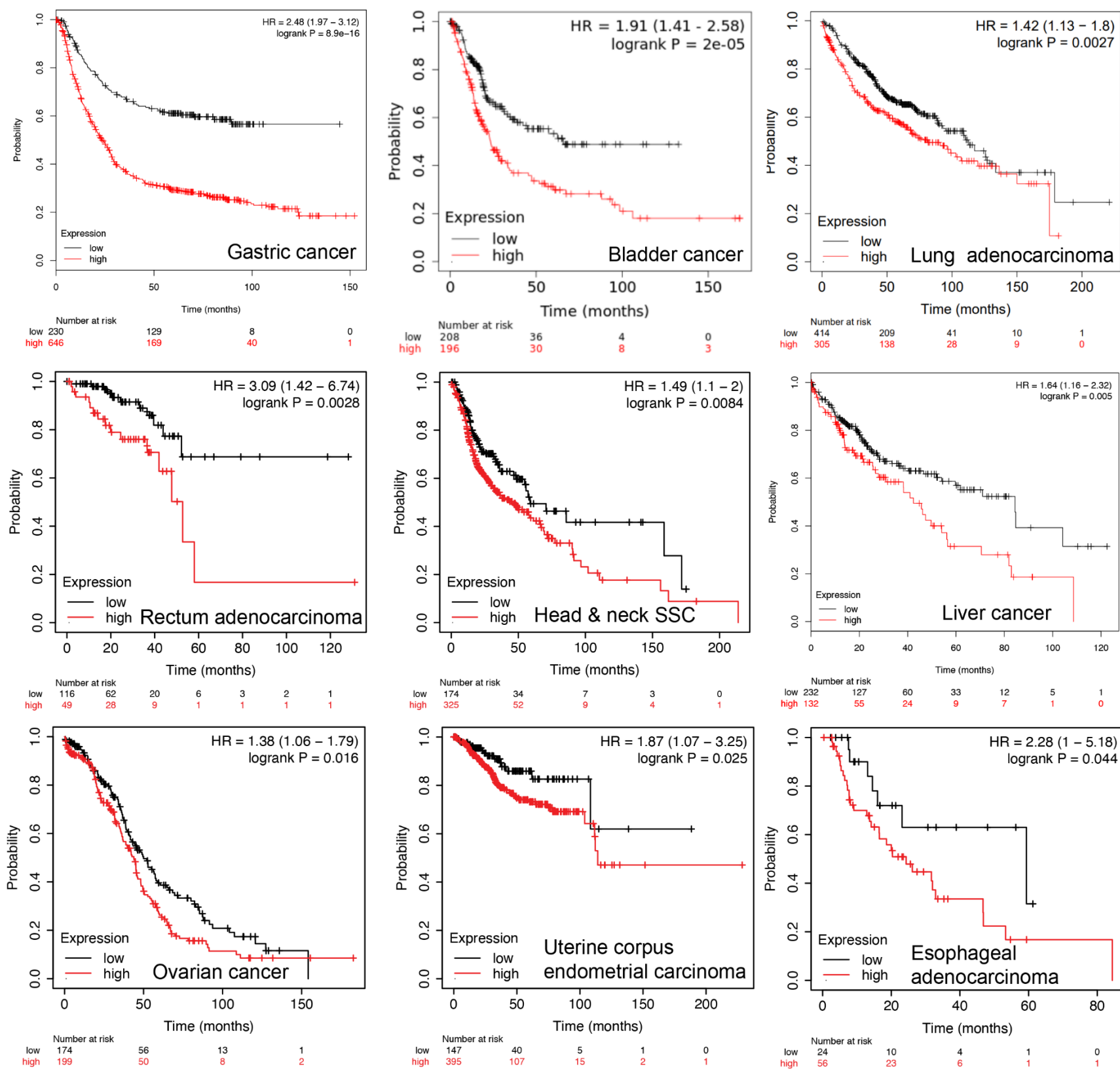


Additional file 1



b





a 1 MDIAIHHPWIRRPFFPFHSPSRLFDQFFGEHLLESDFPTSTSLSPFYLRPPSFLRAPS_W 60

MDIAIHHPWIRRPFFPFHSPSRLFDQFFGEHLLESDF T+TSLSPFYLRPPSFLRAPS_W

1 MDIAIHHPWIRRPFFPFHSPSRLFDQFFGEHLLESDFSTATSLSPFYLRPPSFLRAPS_W 60

61 FDTGLSEMRLEKDRFSVNLDVKHFSPEELKVKVLGDVIEVHGKHEERQDEHGFISREFHR 120

DTGLSEMRLEKDRFSVNLDVKHFSPEELKVKVLGDVIEVHGKHEERQDEHGFISREFHR

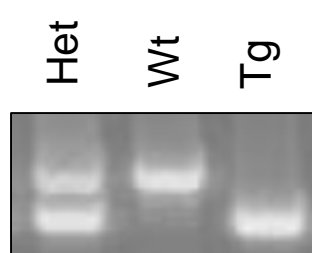
61 IDTGLSEMRLEKDRFSVNLDVKHFSPEELKVKVLGDVIEVHGKHEERQDEHGFISREFHR 120

121 KYRIPADVPLTITSSLSSDGVLTVNGPRKQVSGPERTIPITREEKPAVTAAPKK 175

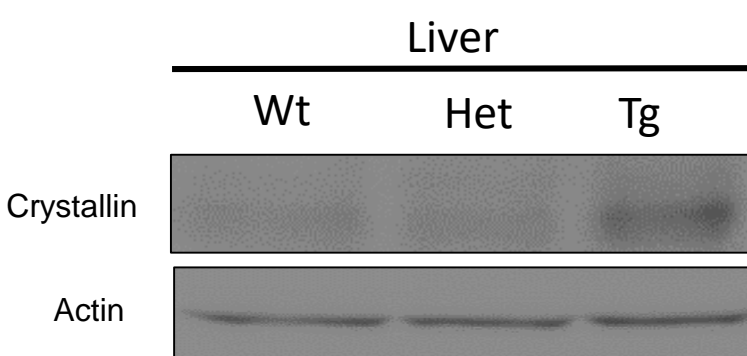
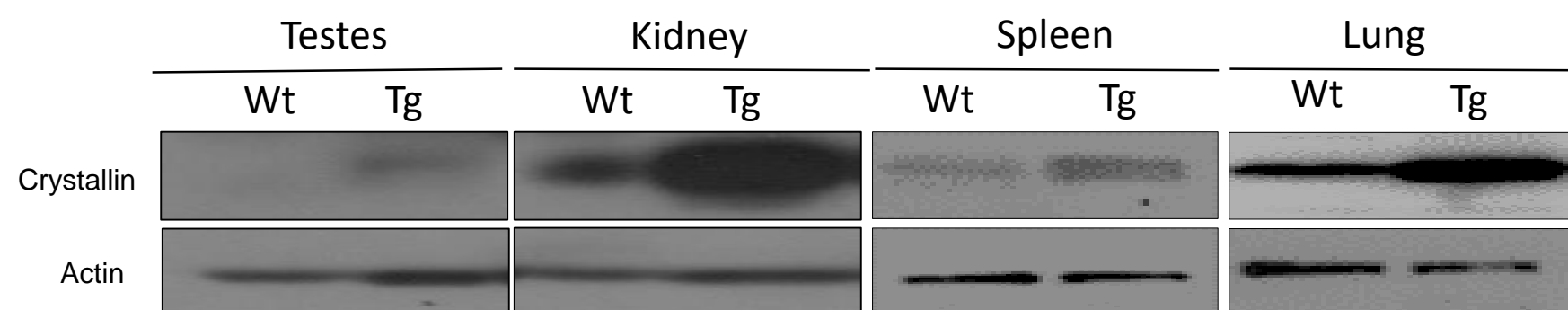
KYRIPADVPLTITSSLSSDGVLTVNGPRKQVSGPERTIPITREEKPAV AAPKK

121 KYRIPADVPLTITSSLSSDGVLTVNGPRKQVSGPERTIPITREEKPAVAAPKK 175

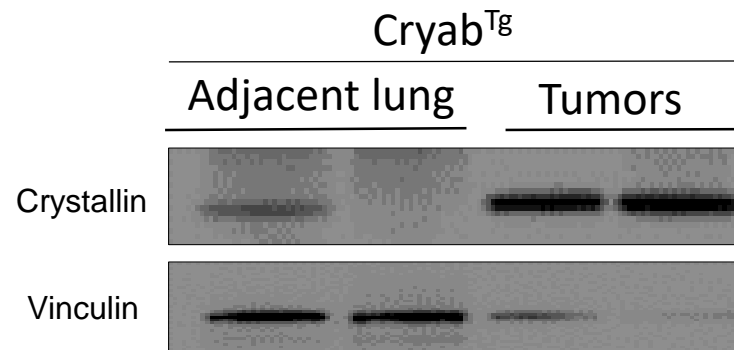
b

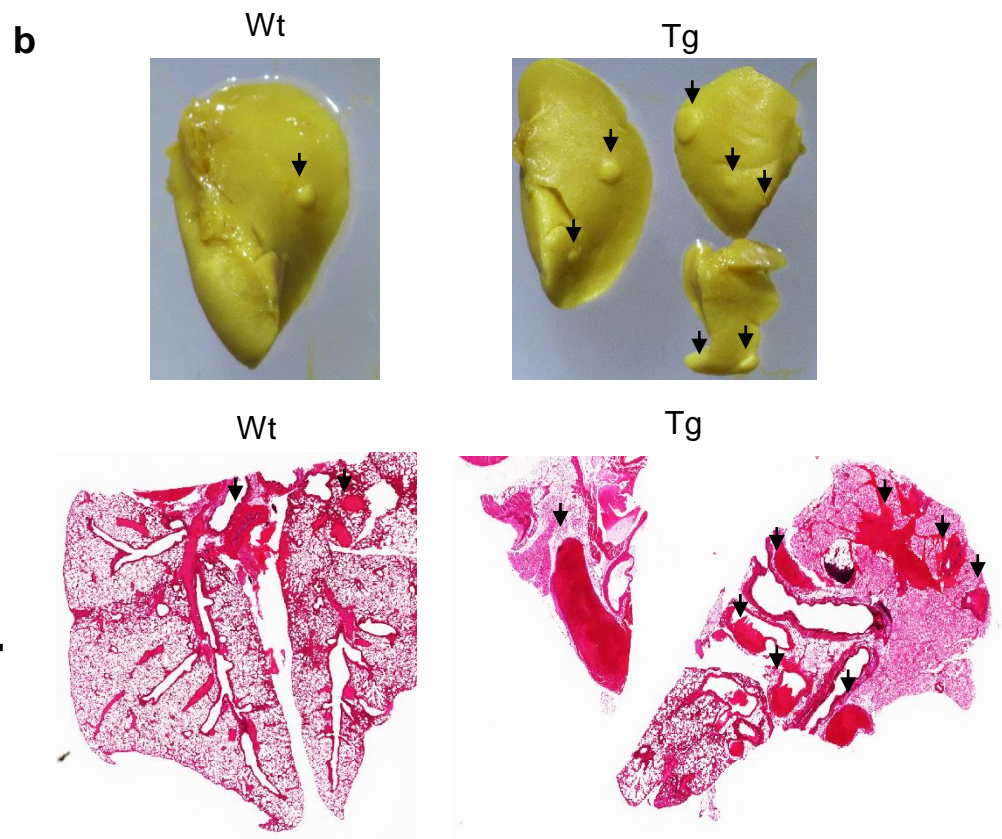
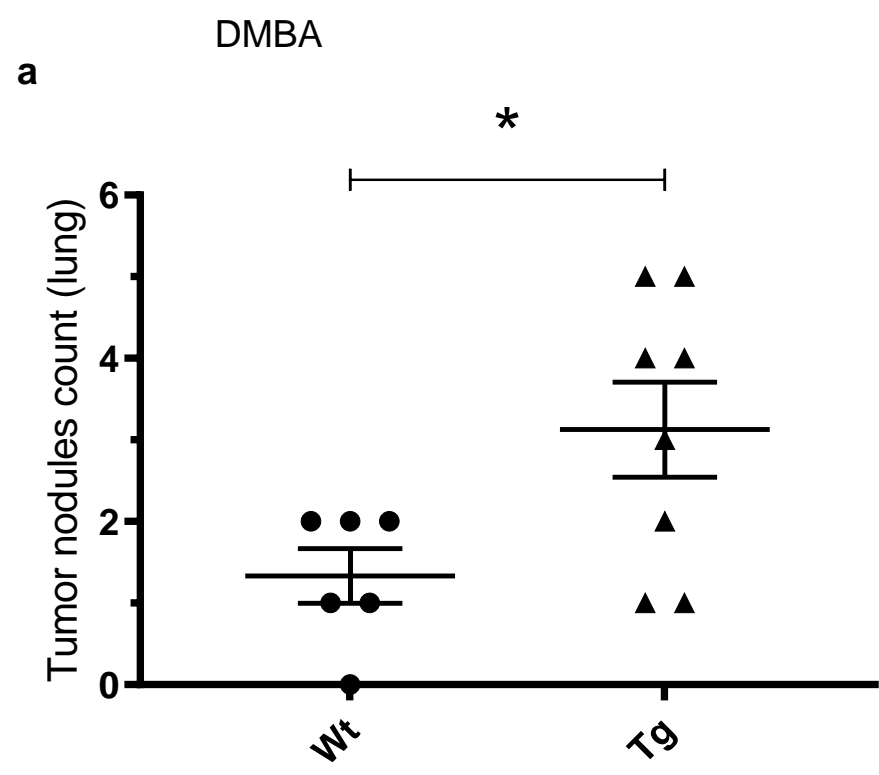


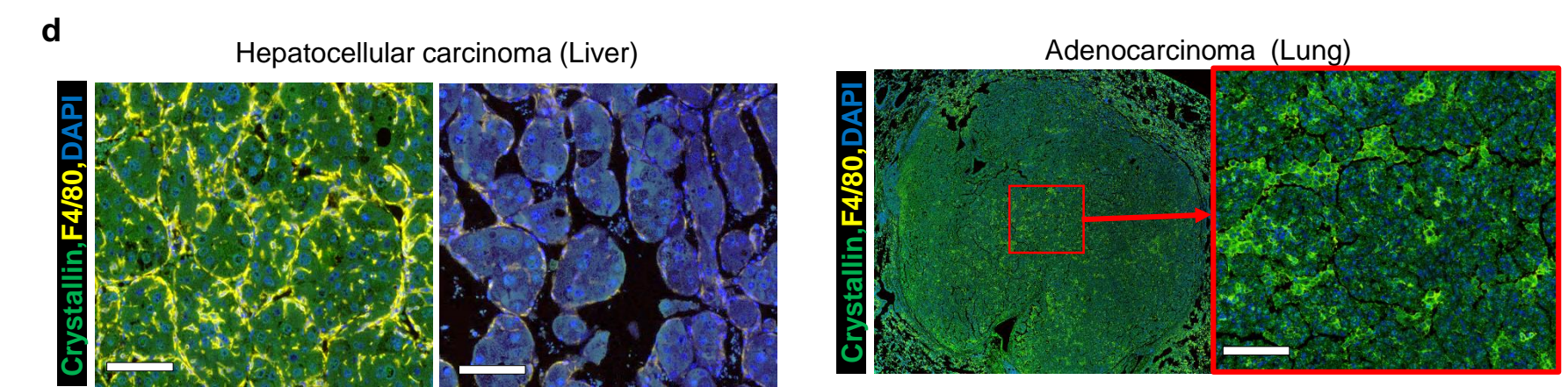
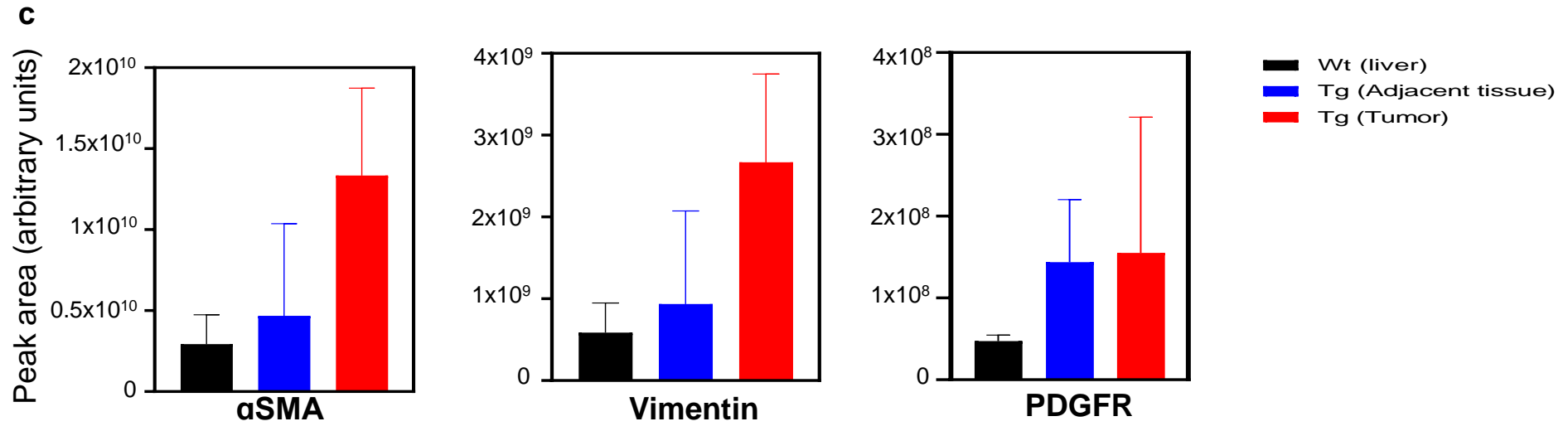
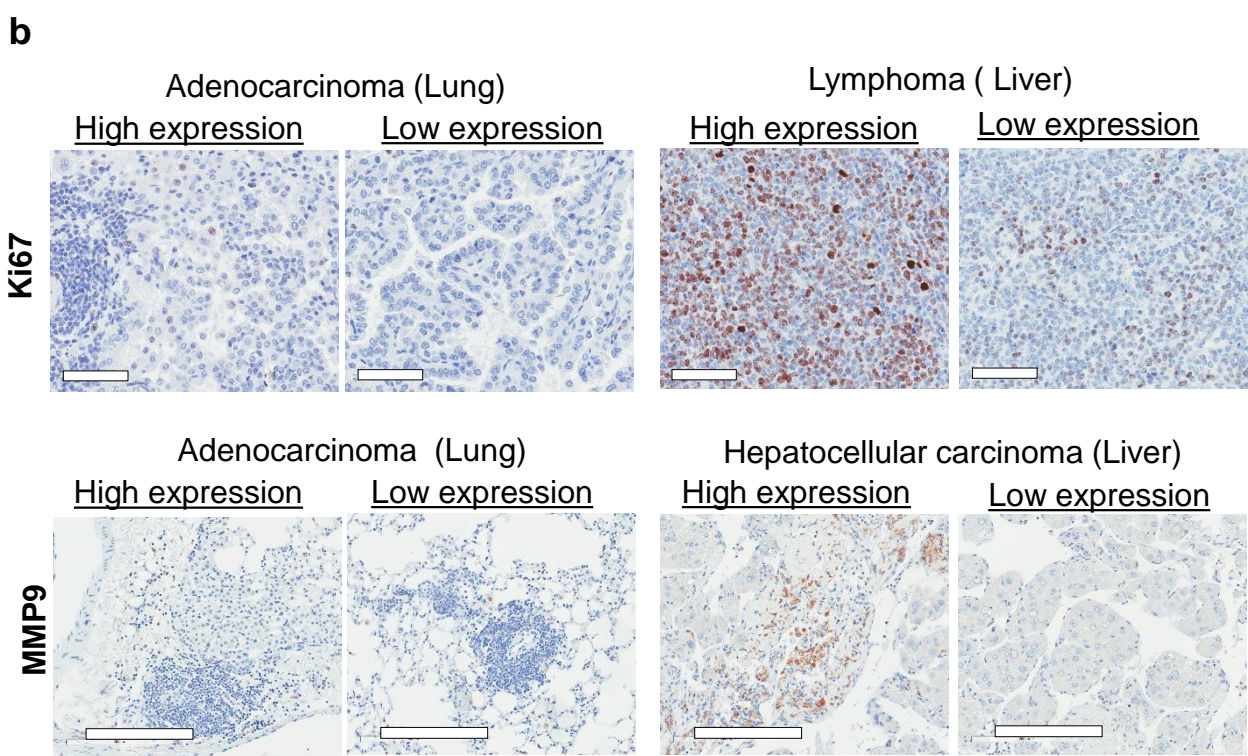
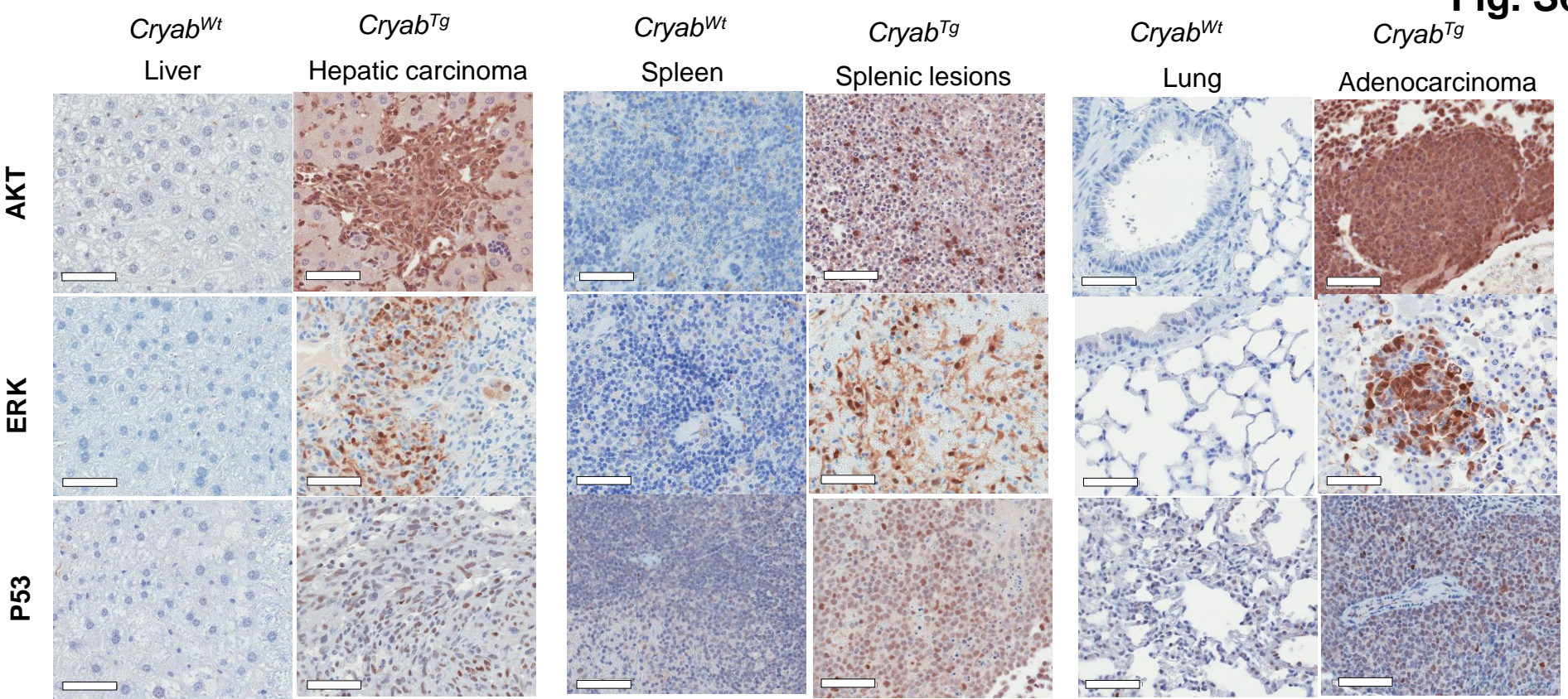
c



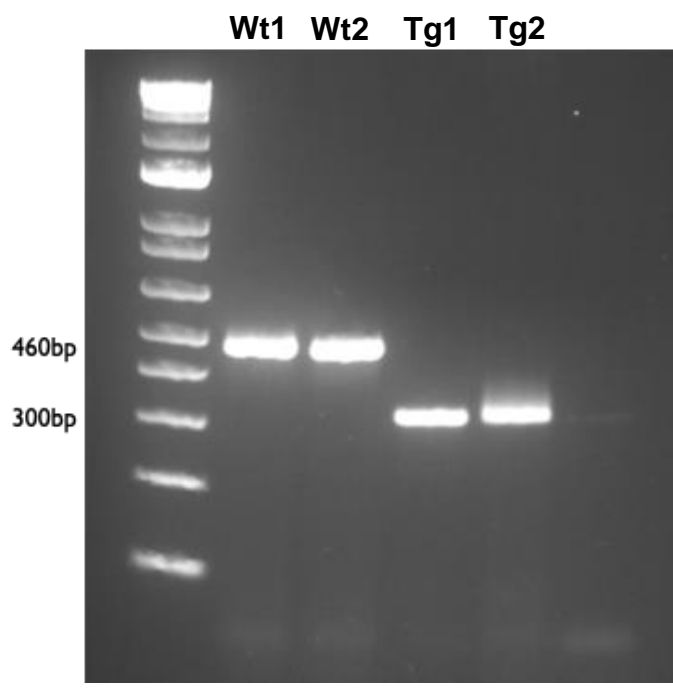
d



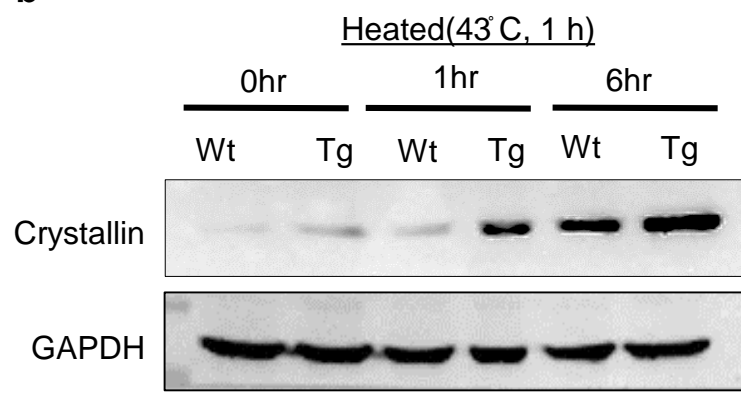




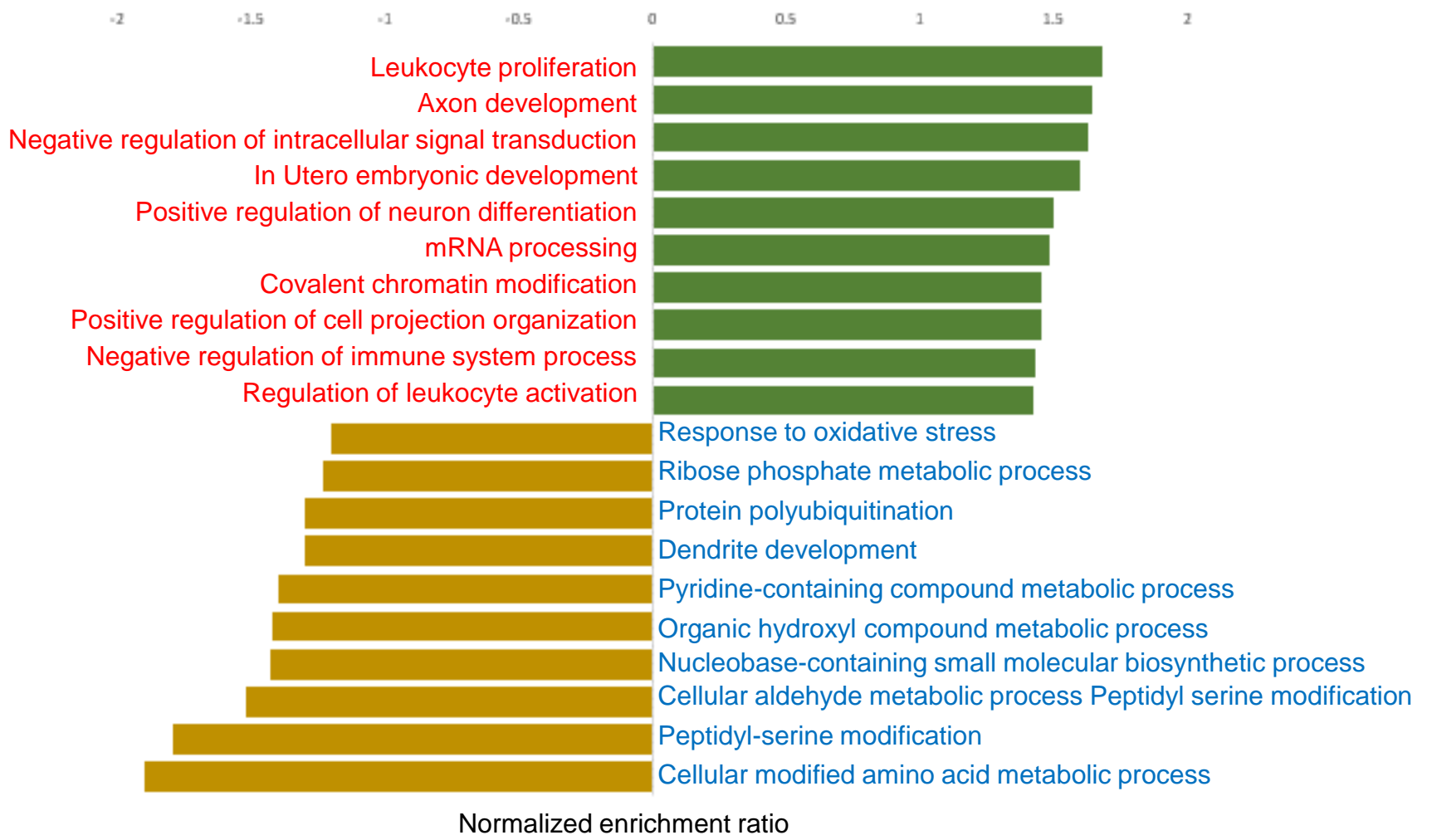
a



b



Biological processes



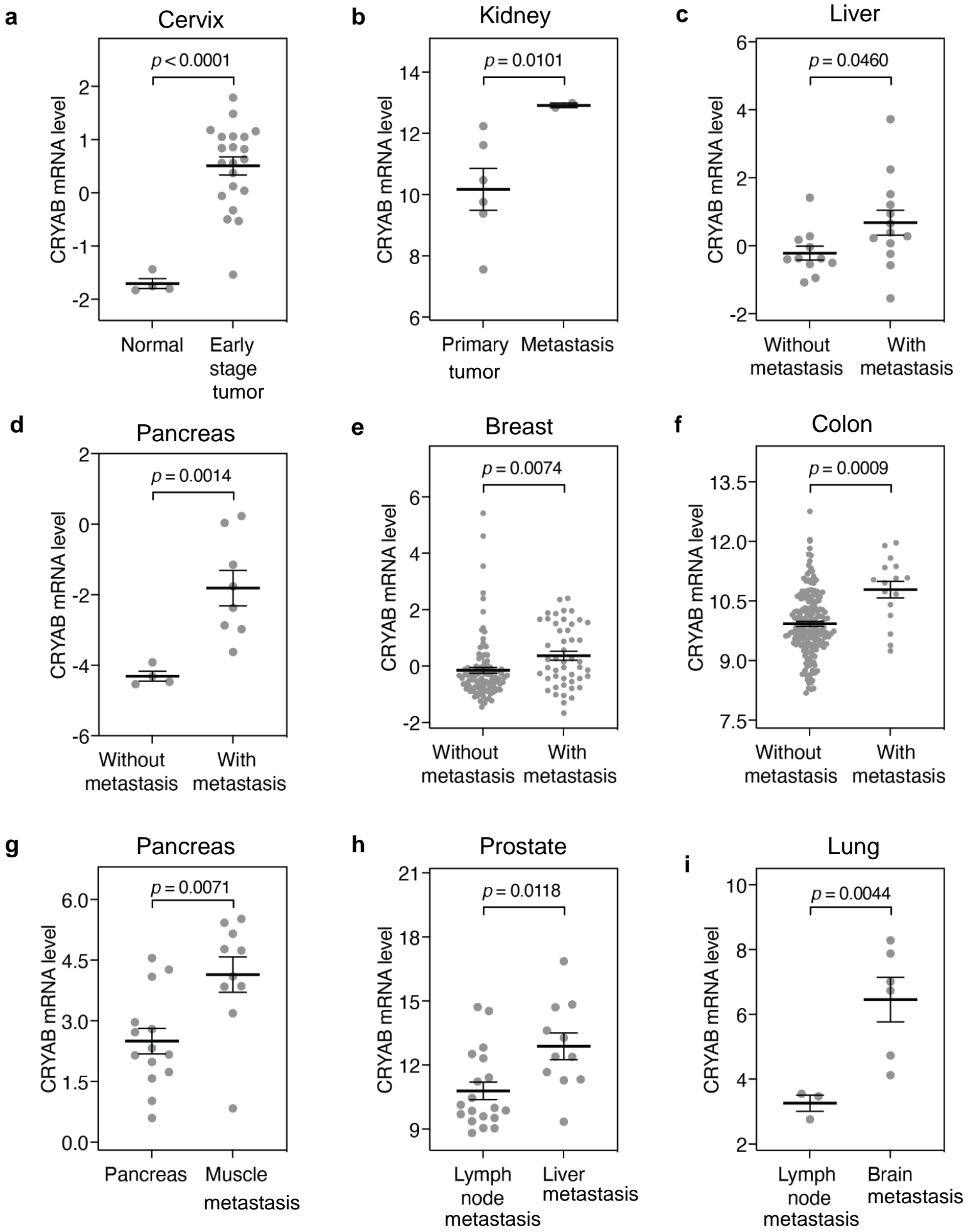
Normalized enrichment ratio

b

Bsg	Basigin	Extracellular matrix metalloproteinase inducer (EMMPRIN) or (CD147):
Crabp2	Cellular retinoic acid-binding protein 2	Role in metastasis of lung cancer is unclear.
Hells	Lymphocyte-specific helicase	Elevated expression in aggressive metastatic tumor
Sar1b	GTP-binding protein SAR1b	Associated with shorter overall survival time in patients with CRC.
Eif4b	Eukaryotic translation initiation factor 4B	The chemo-resistance and metastasis characteristics of NSCLC

c

Co-occurrence Analysis			
A	B	p-Value	q-Value
CRYAB	BSG	<0.001	<0.001
CRYAB	HELLS	<0.001	<0.001
BSG	EIF4B	<0.001	<0.001
CRABP2	HELLS	0.005	0.012
HELLS	EIF4B	<0.001	<0.001
HELLS	SAR1B	<0.001	<0.001
SAR1B	EIF4B	0.006	0.012



j

