

ProNGF promotes brain metastasis through TrkA/EphA2 induced Src activation in triple negative breast cancer cells

Julien Cicero, Sarah Trouvilliez, Martine Palma, Gaetan Ternier, Laurine Decoster, Eloise Happerneegg, Nicolas Barois, Alexandre Van Outryve, Lucie Dehouck, Roland P Bourette, Eric Adriaenssens, Chann Lagadec, Cagatay Mehmet Tarhan, Dominique Collard, Zied Souguir, Elodie Vandenhautte, Grégory Maubon, François Sipieter, Nicolas Borghi, Fumitaka Shimizu, Takashi Kanda, Paolo Giacobini, Fabien Gosselet, Nathalie Maubon, Xuefen Le Bourhis, Isabelle Van Seuningen, Caroline Mysiorek and Robert-Alain Toillon.

Supplemental data

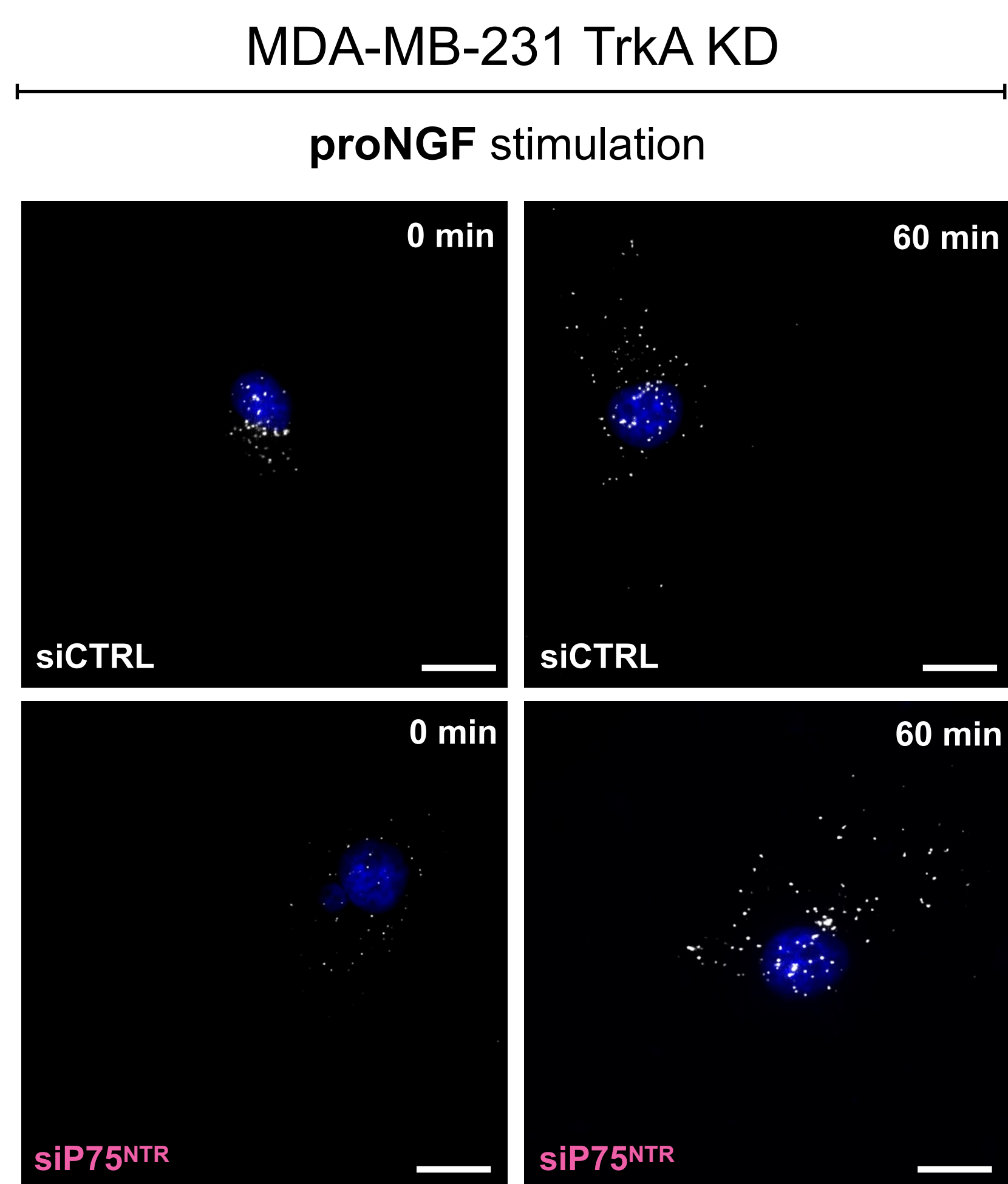
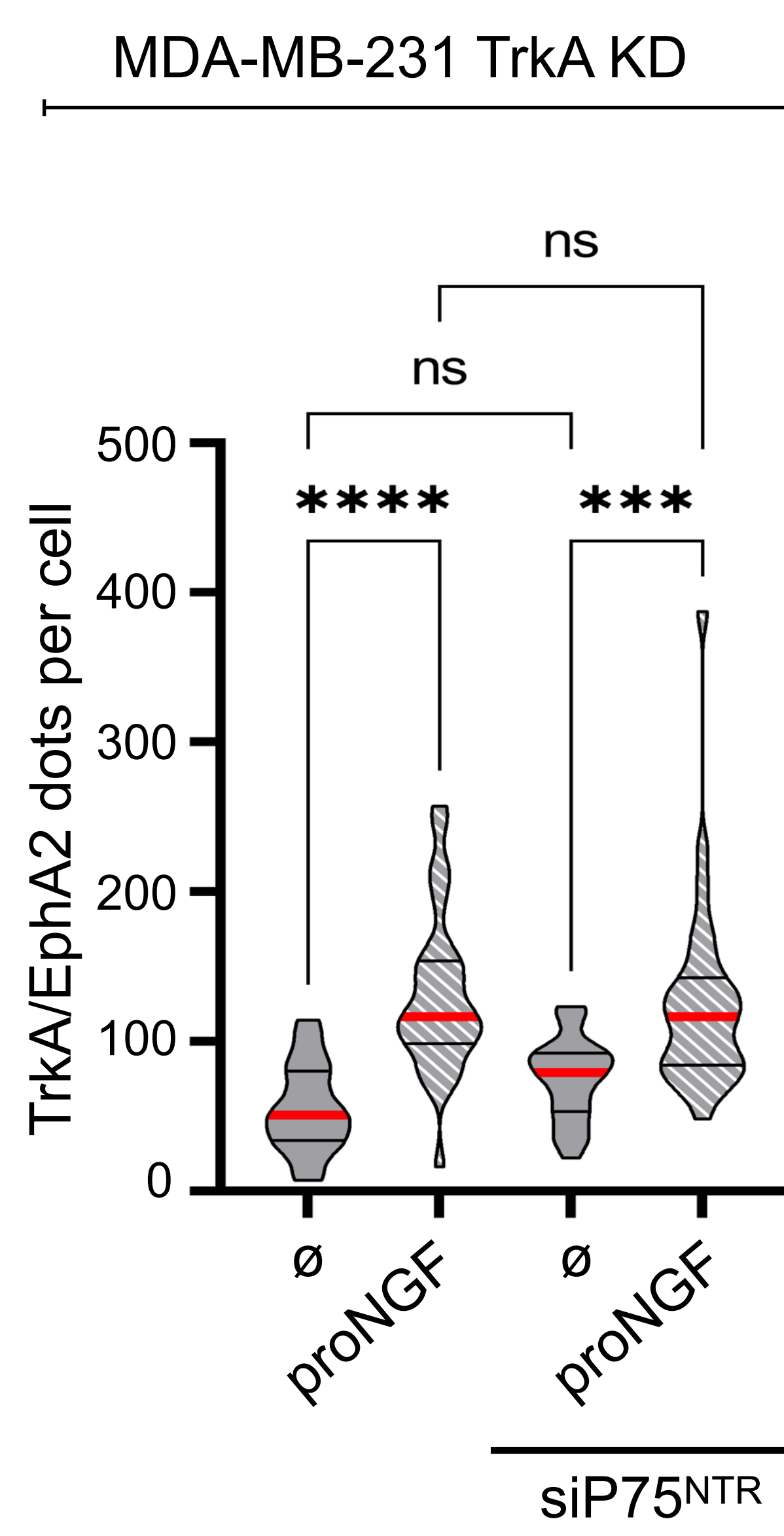
A**B**

Figure S1.

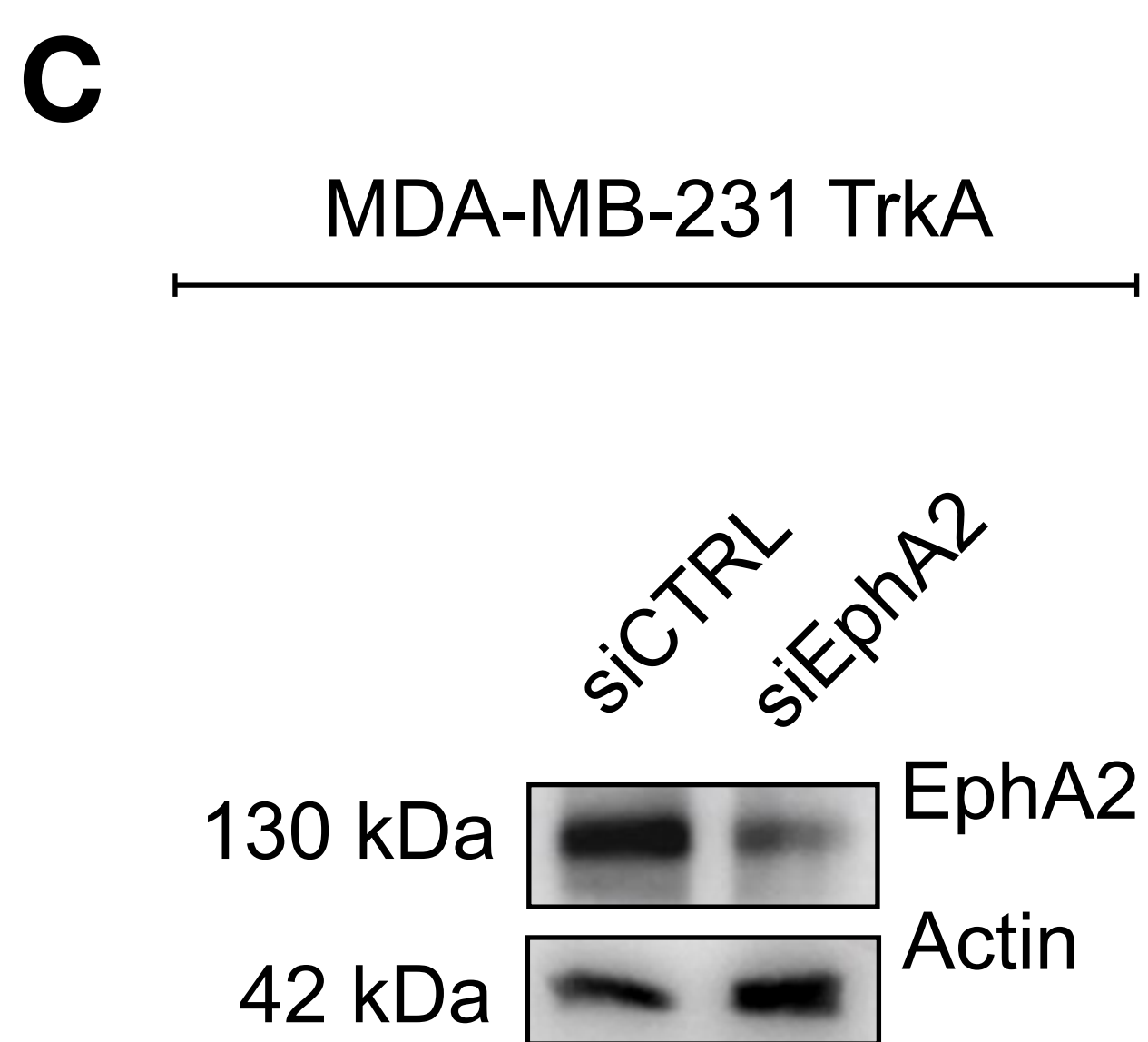
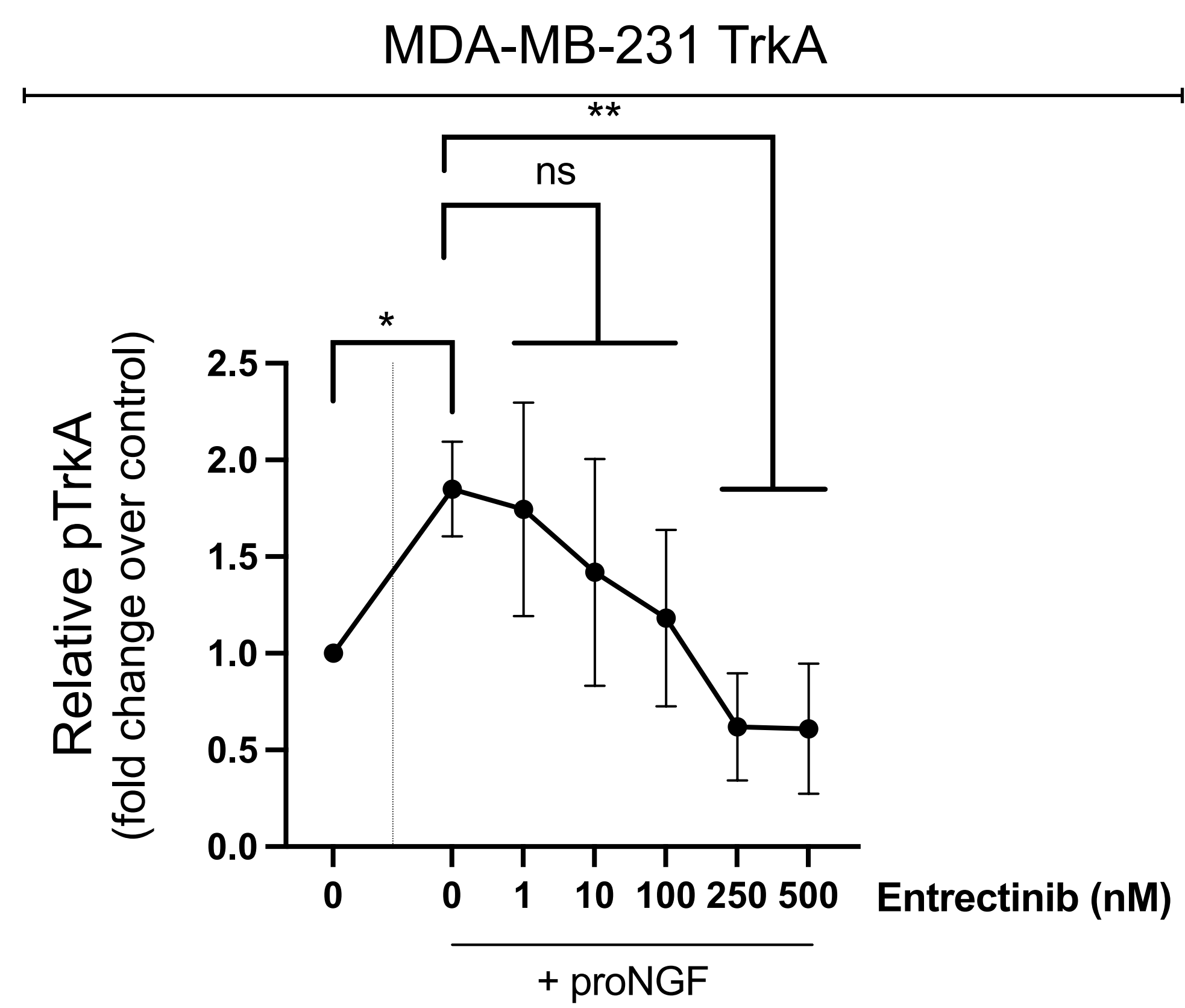
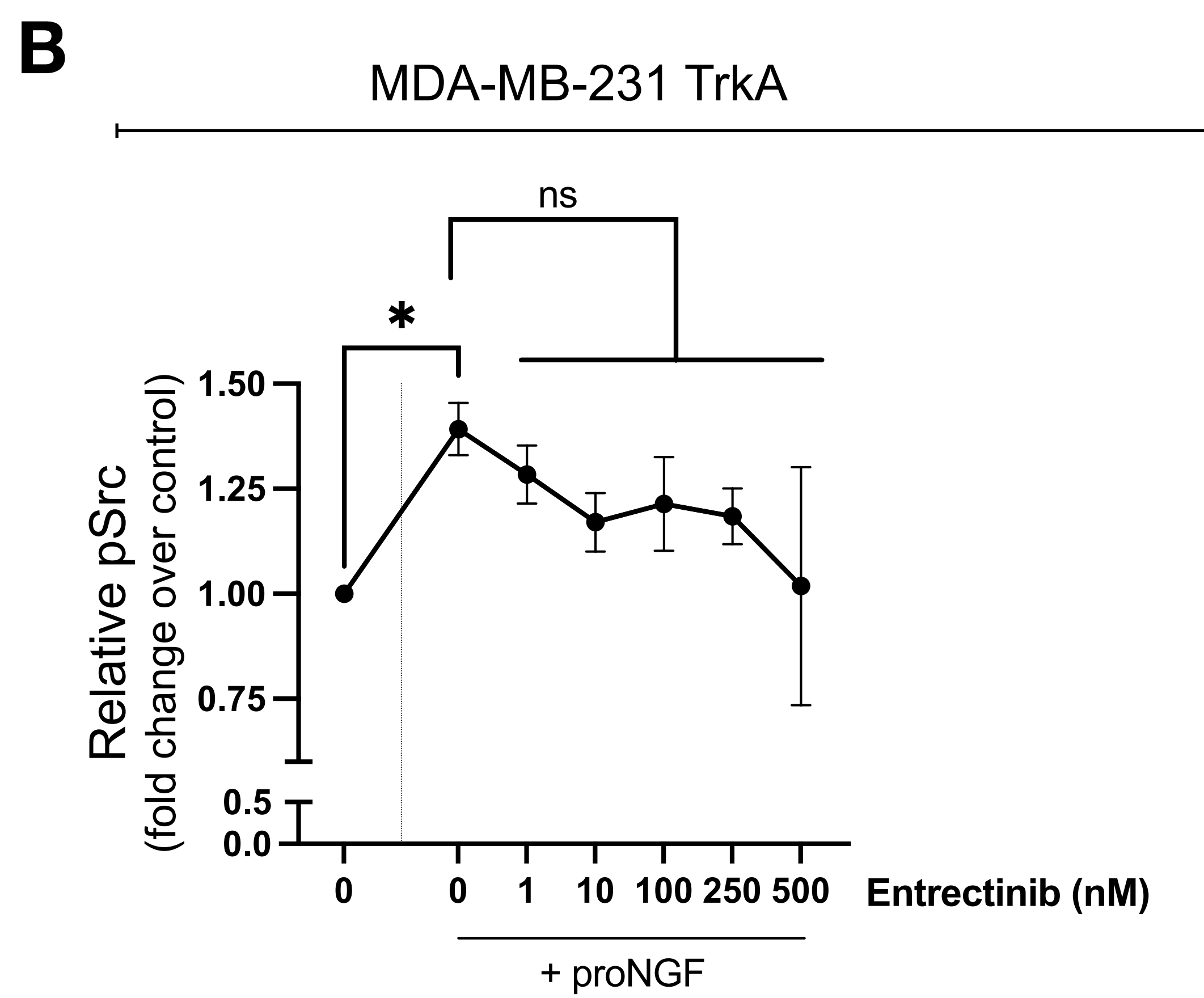
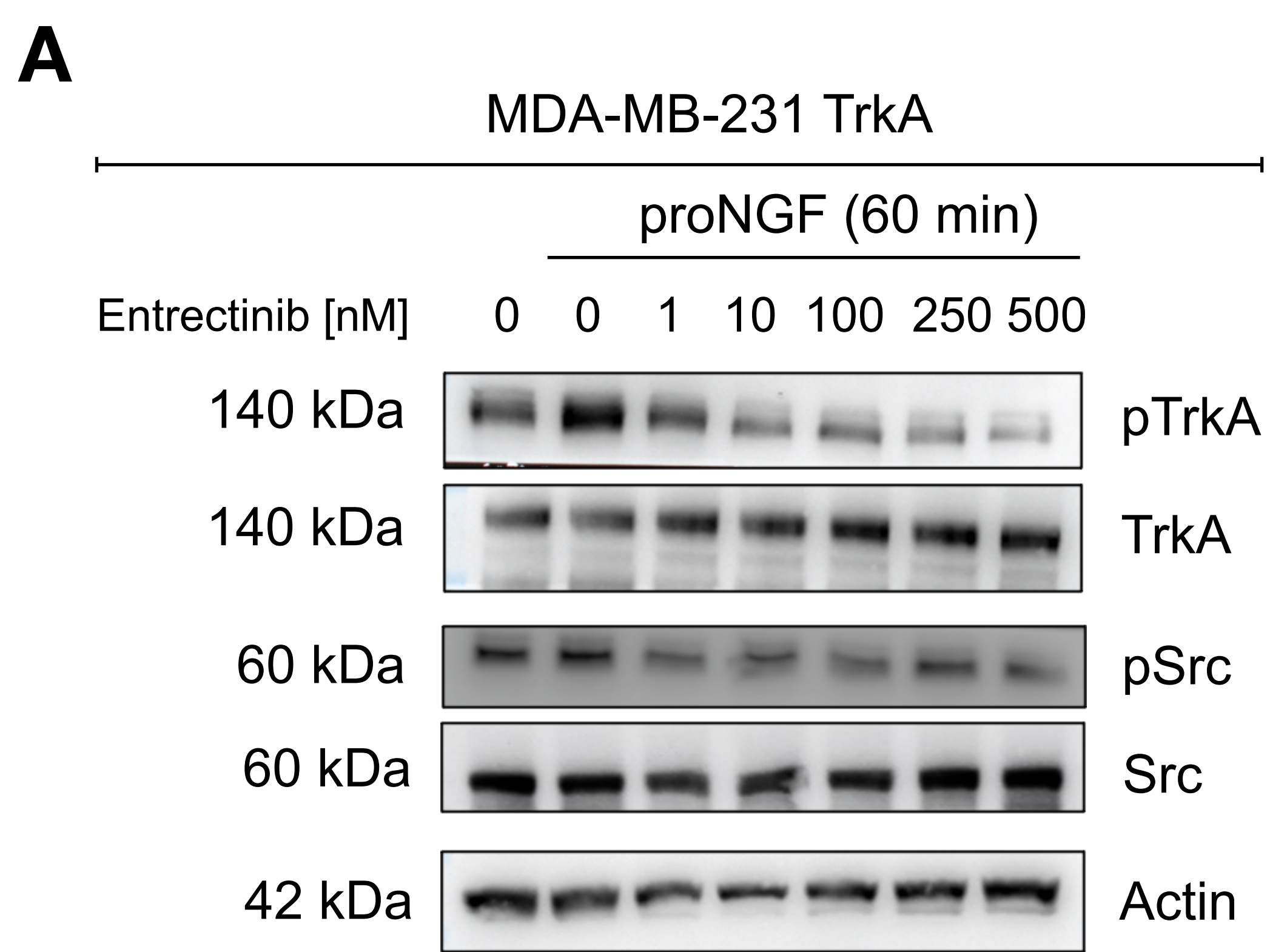


Figure S2.

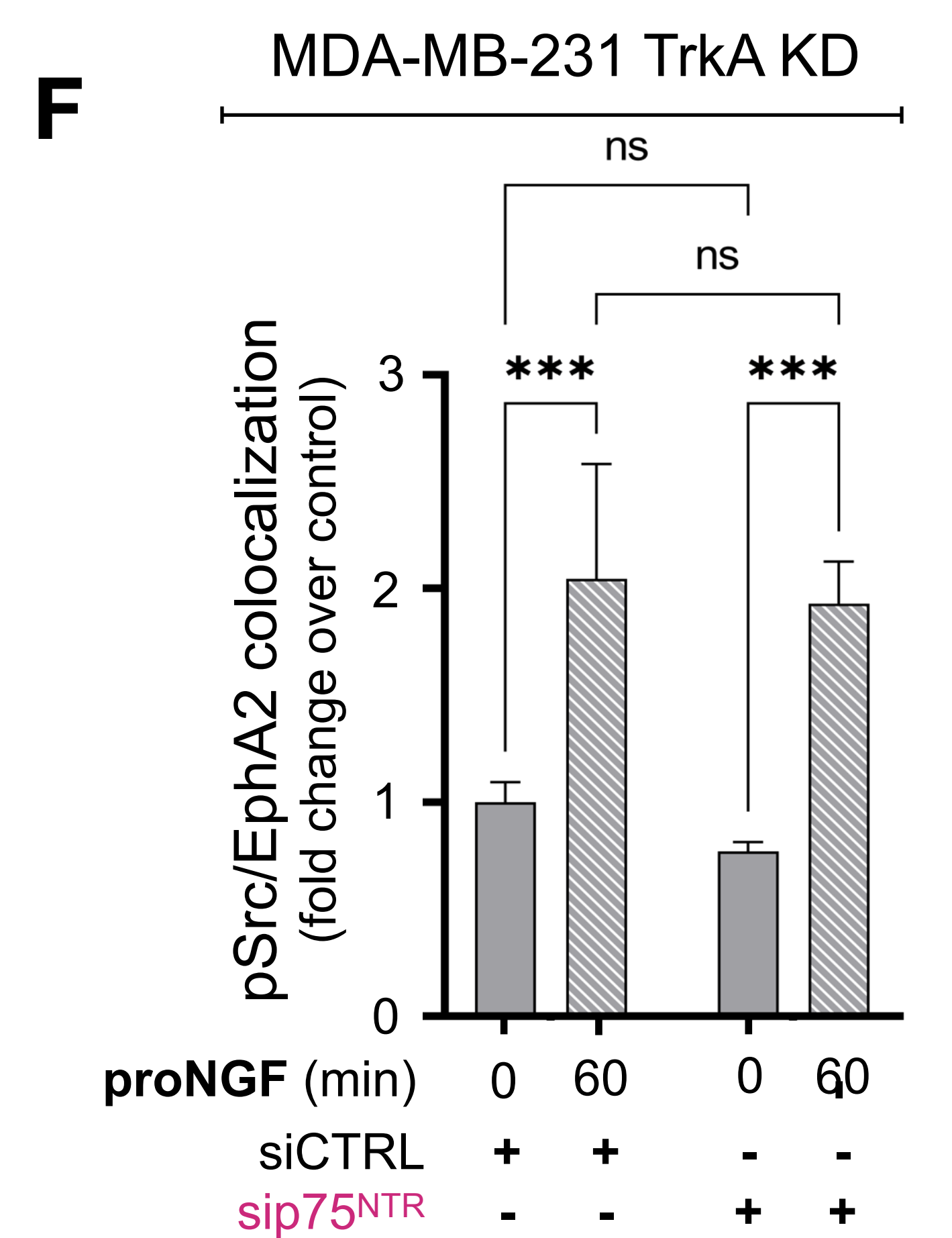
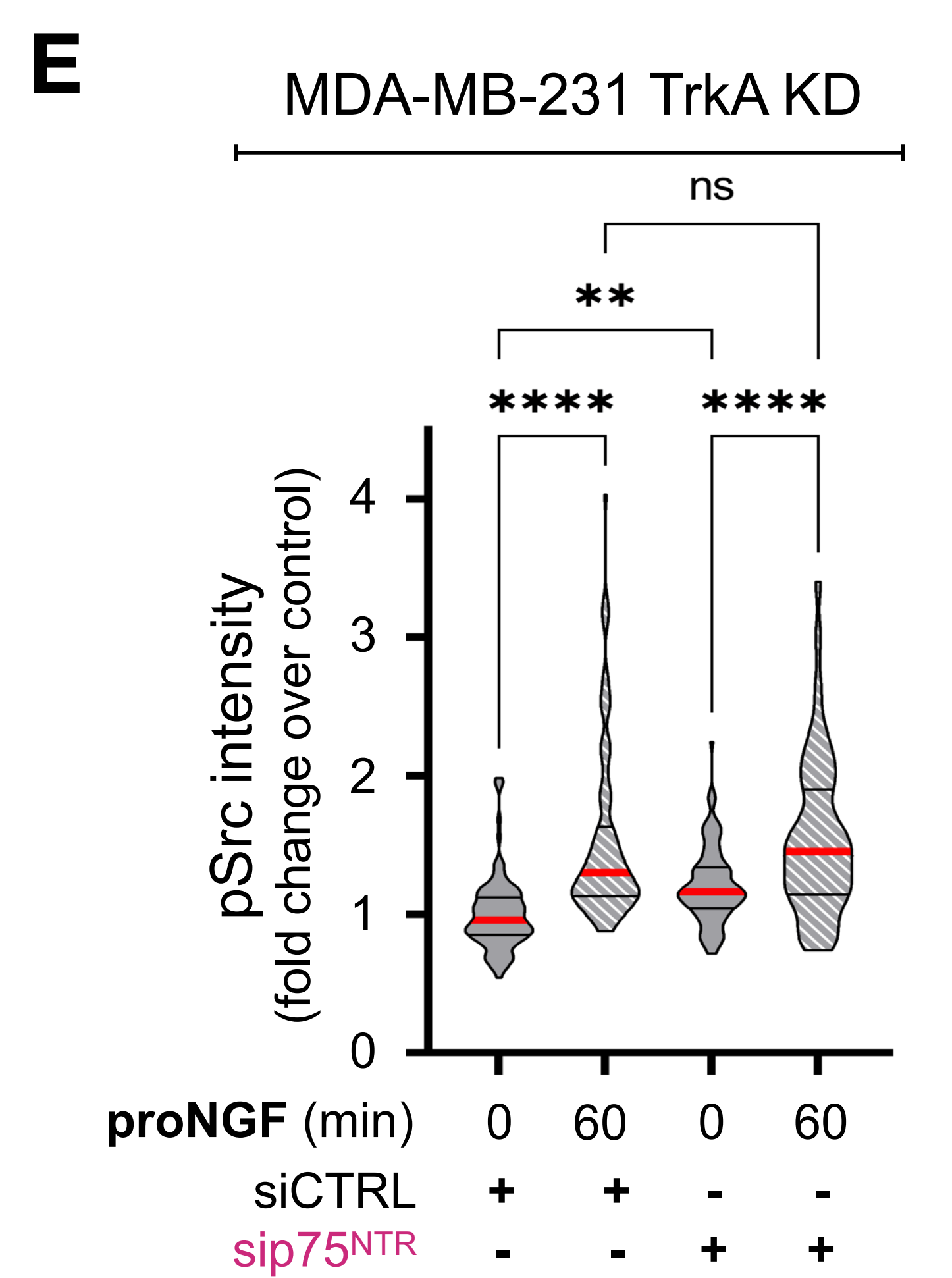
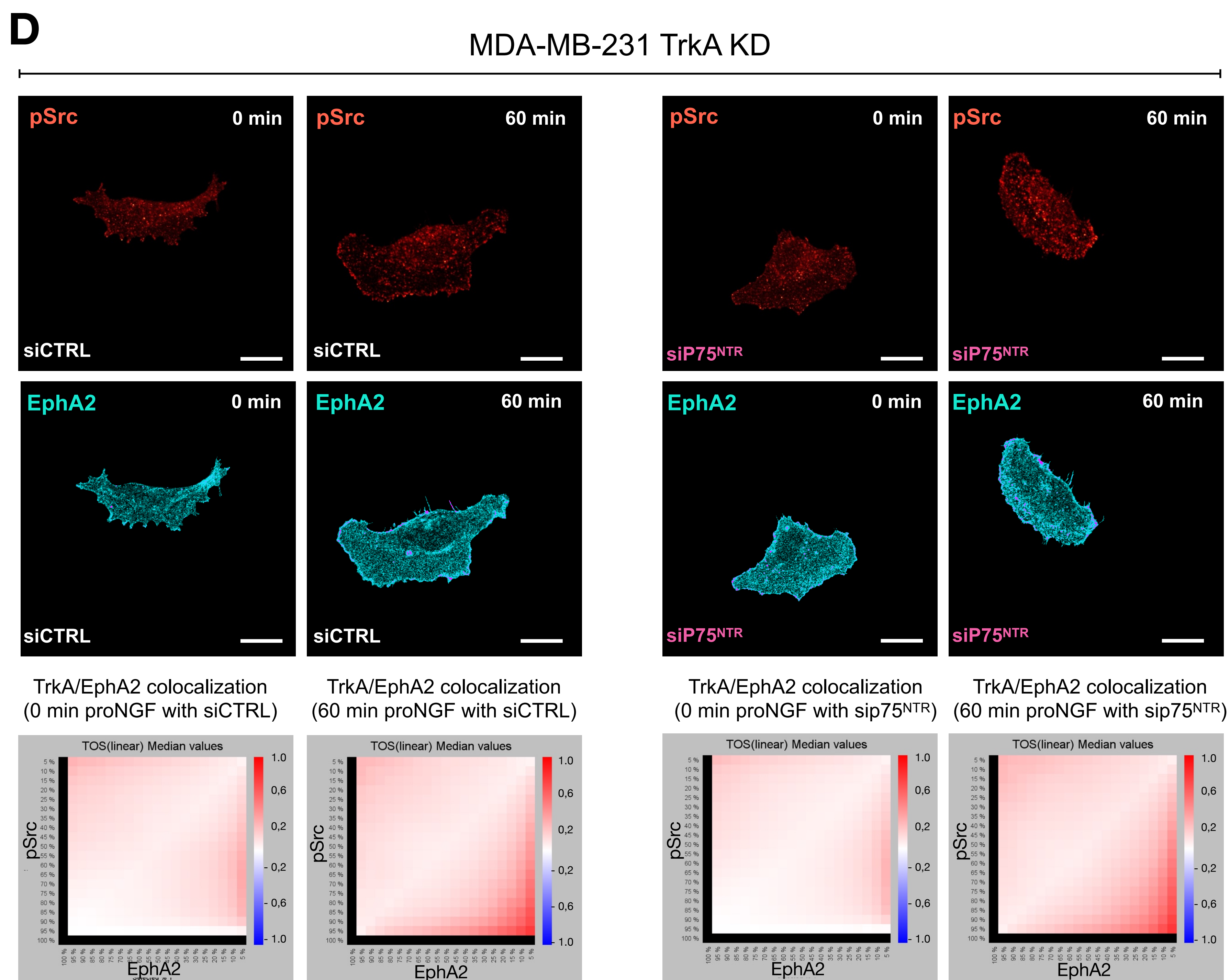
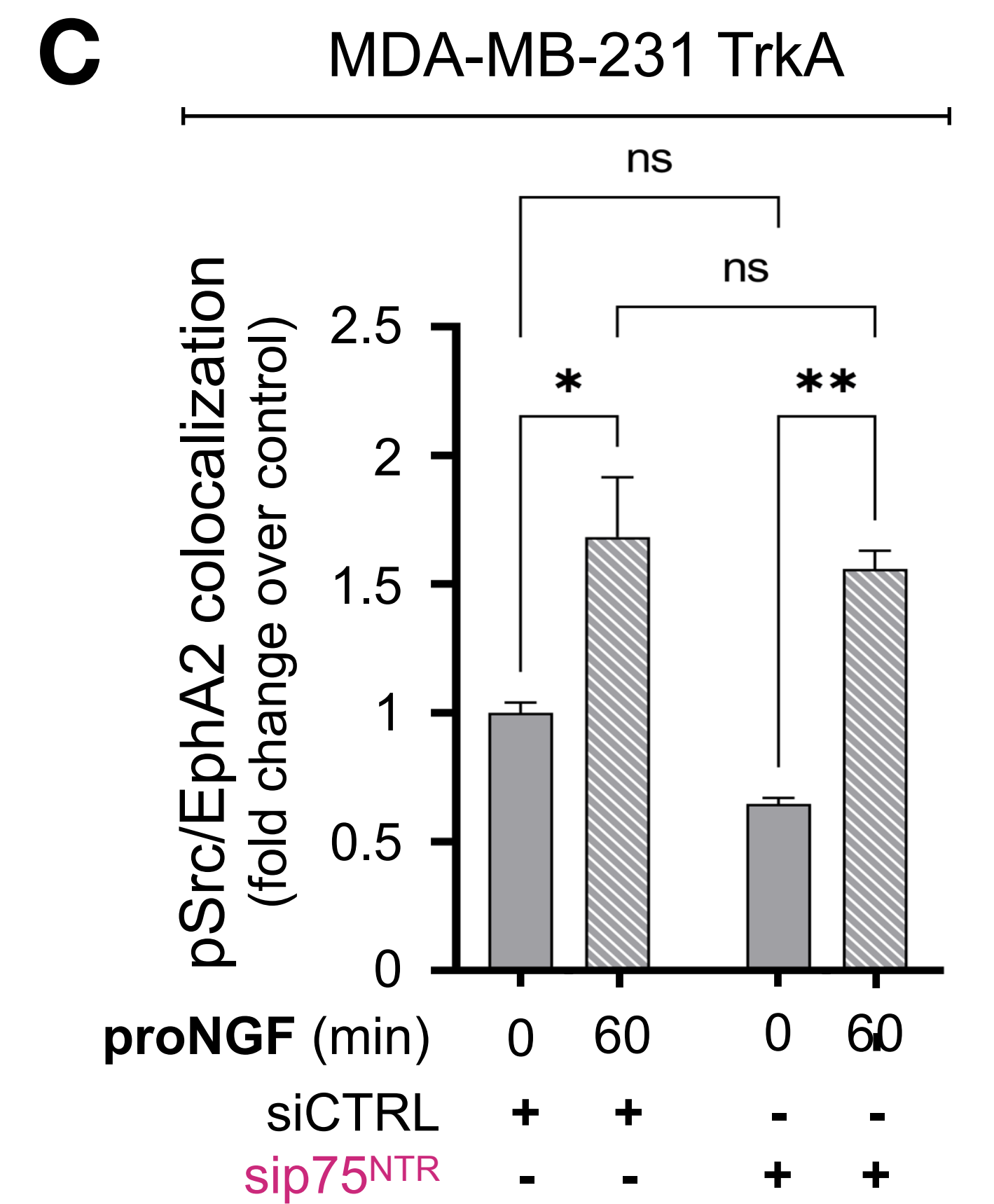
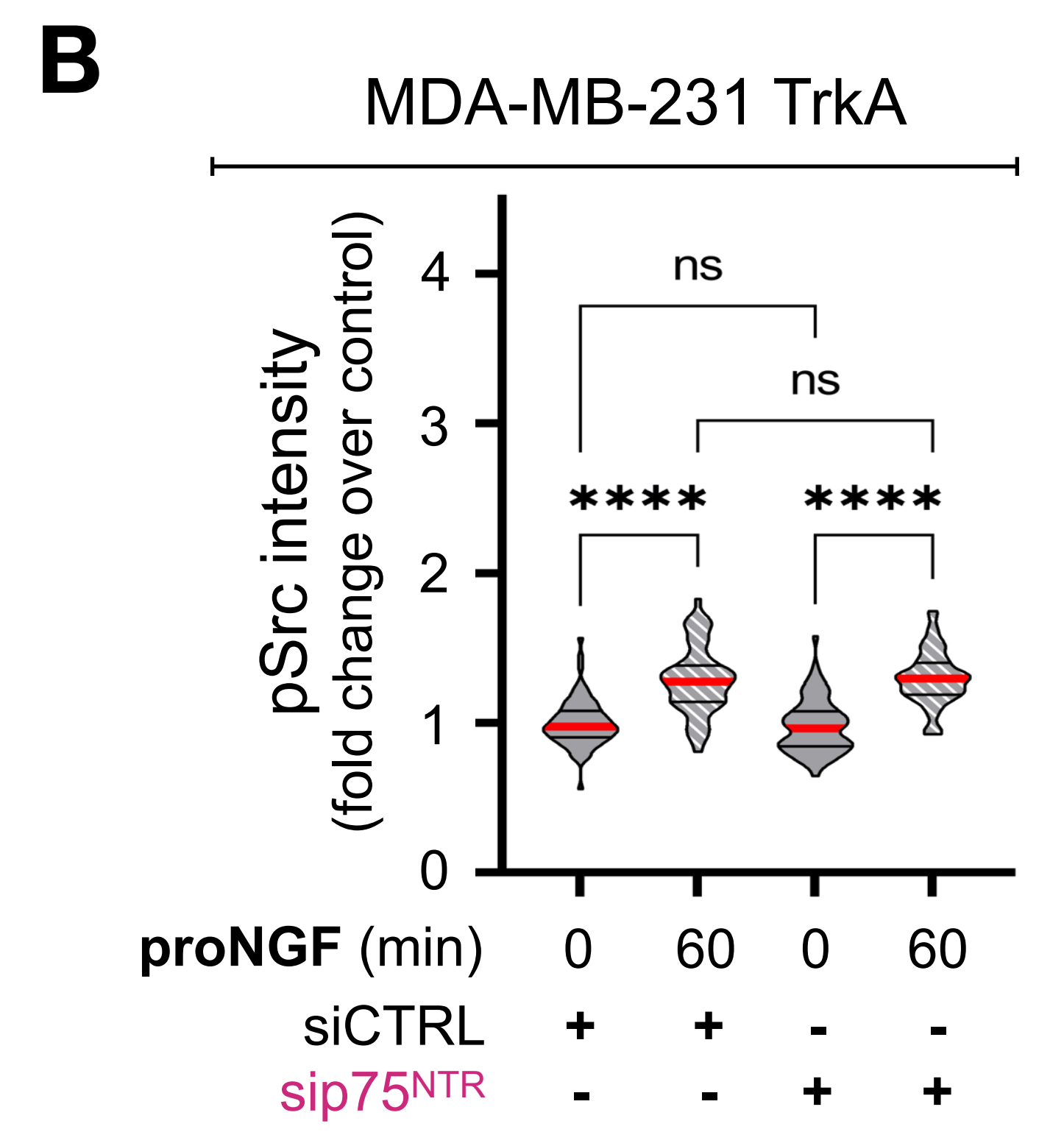
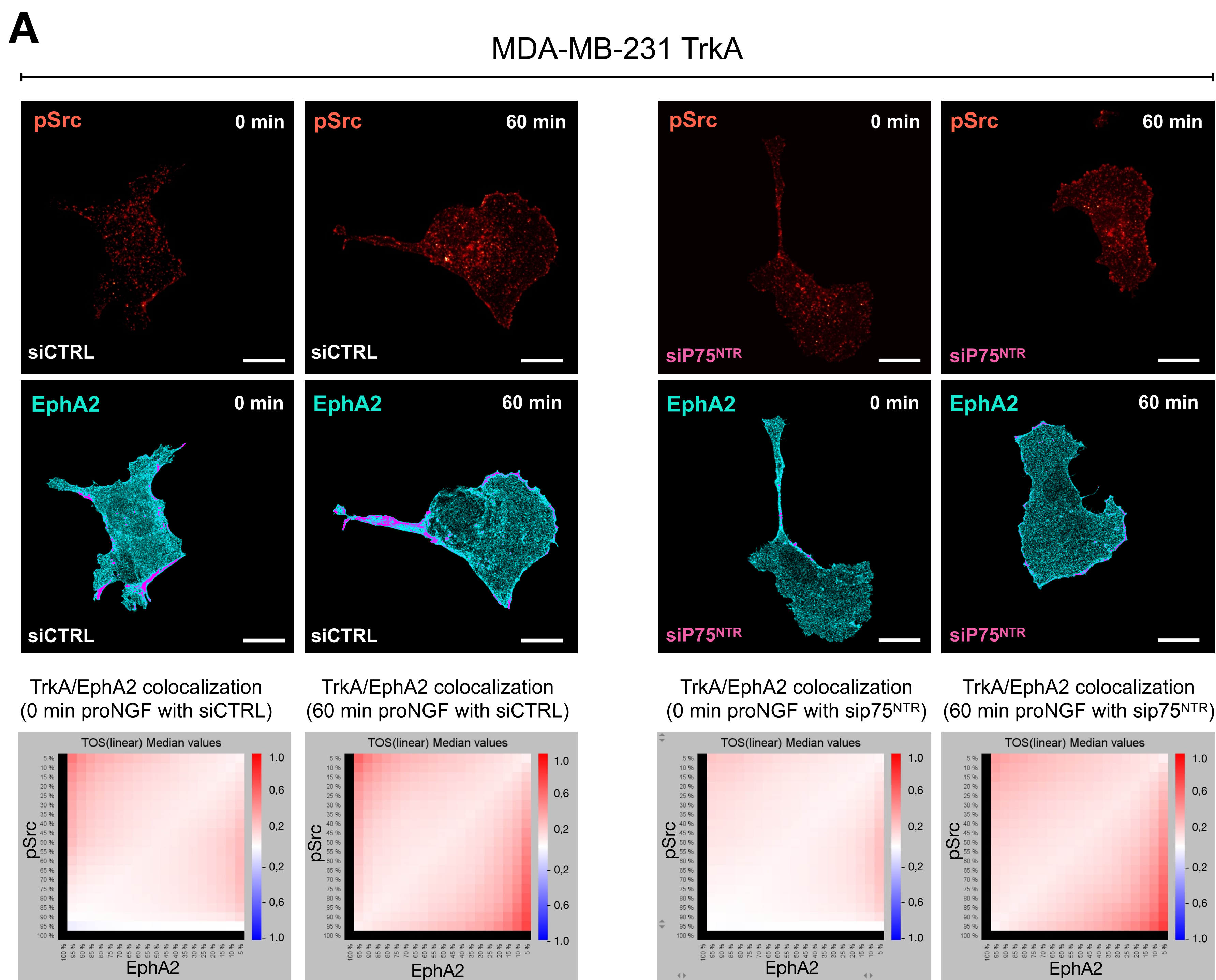


Figure S3.

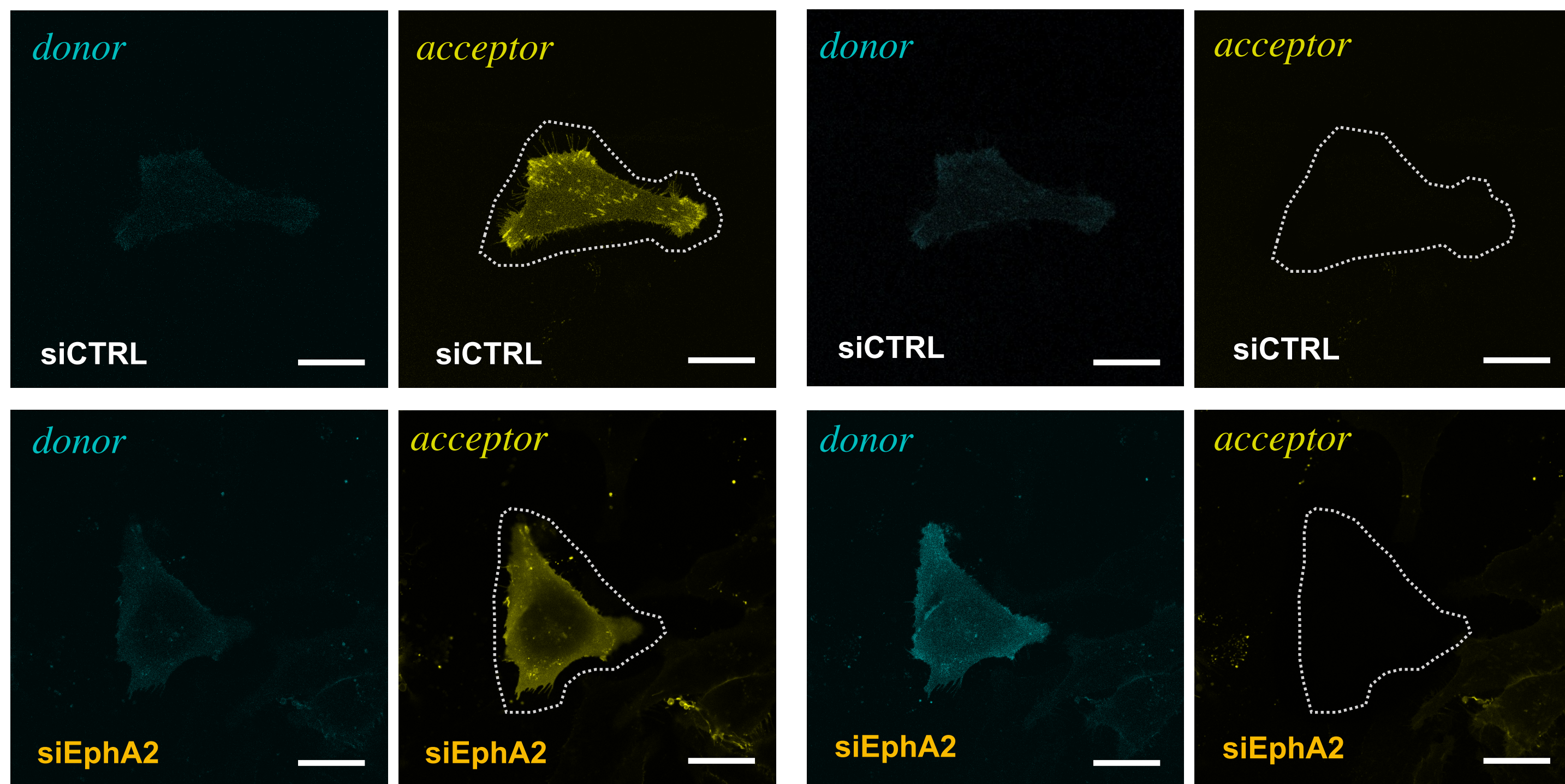
A

MDA-MB-231 TrkA KD

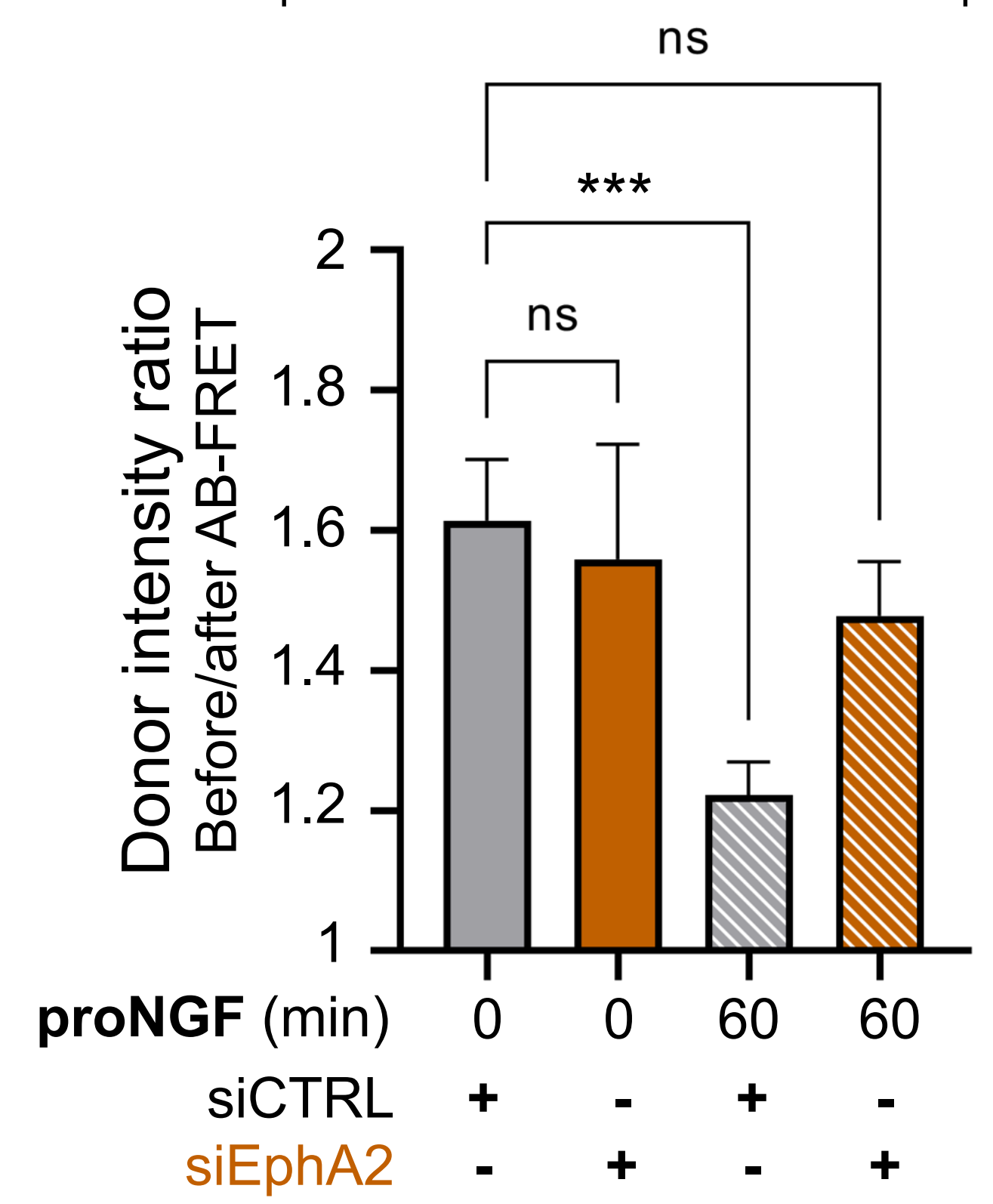
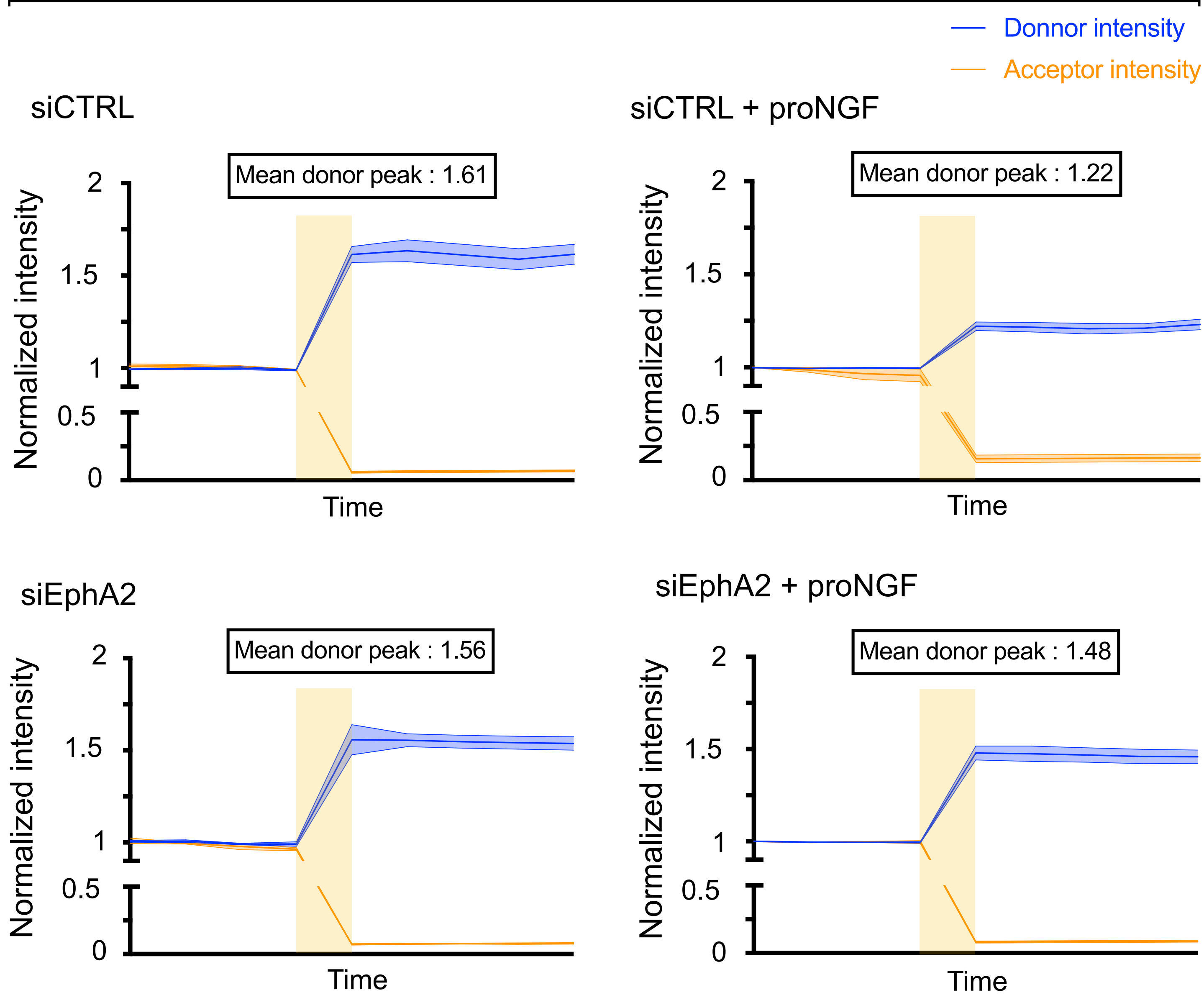
proNGF stimulation (60 min)

Before AB-FRET

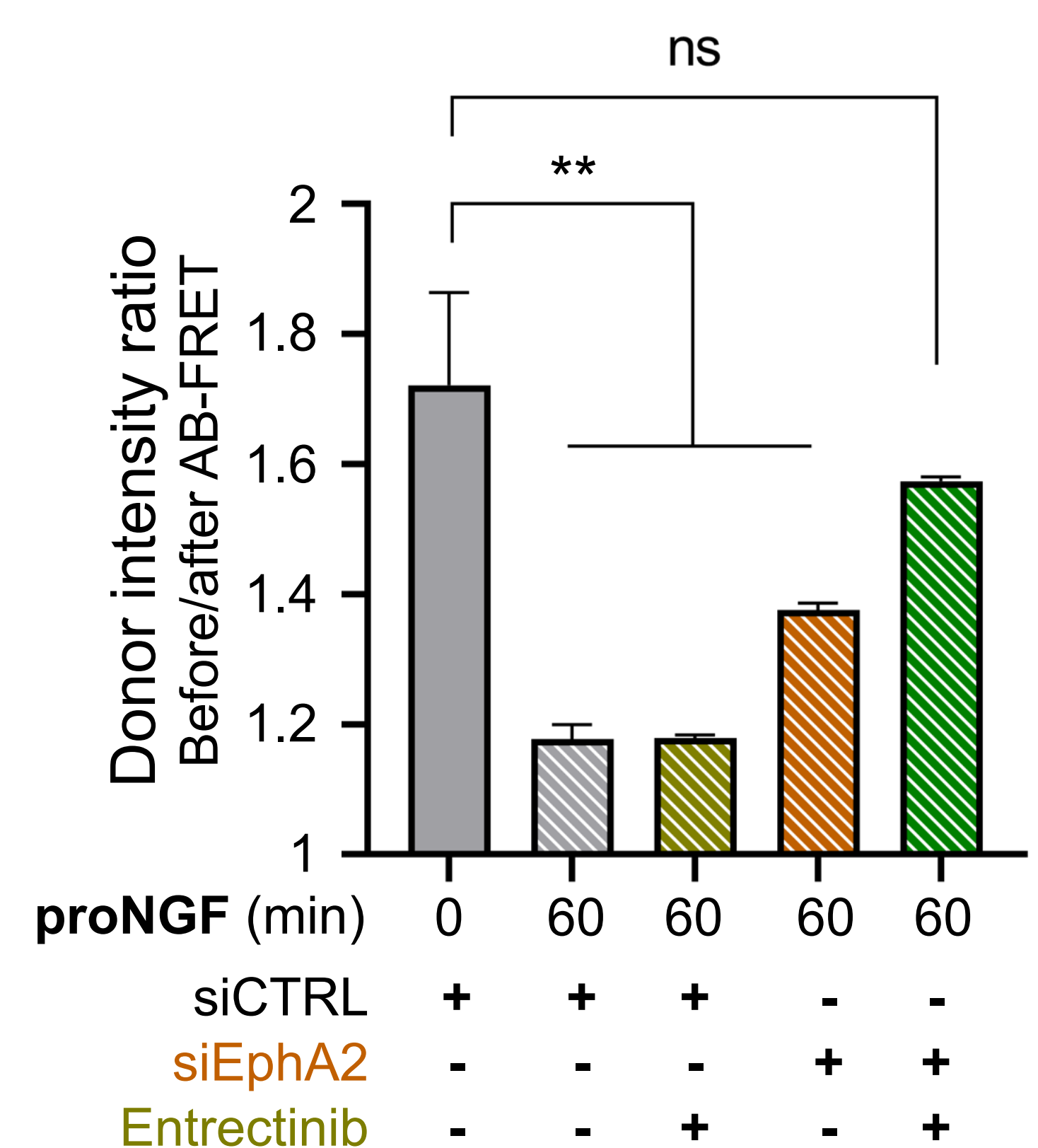
After AB-FRET

**B**

MDA-MB-231 TrkA KD

**C**MDA-MB-231 TrkA^{kinase dead}**D**

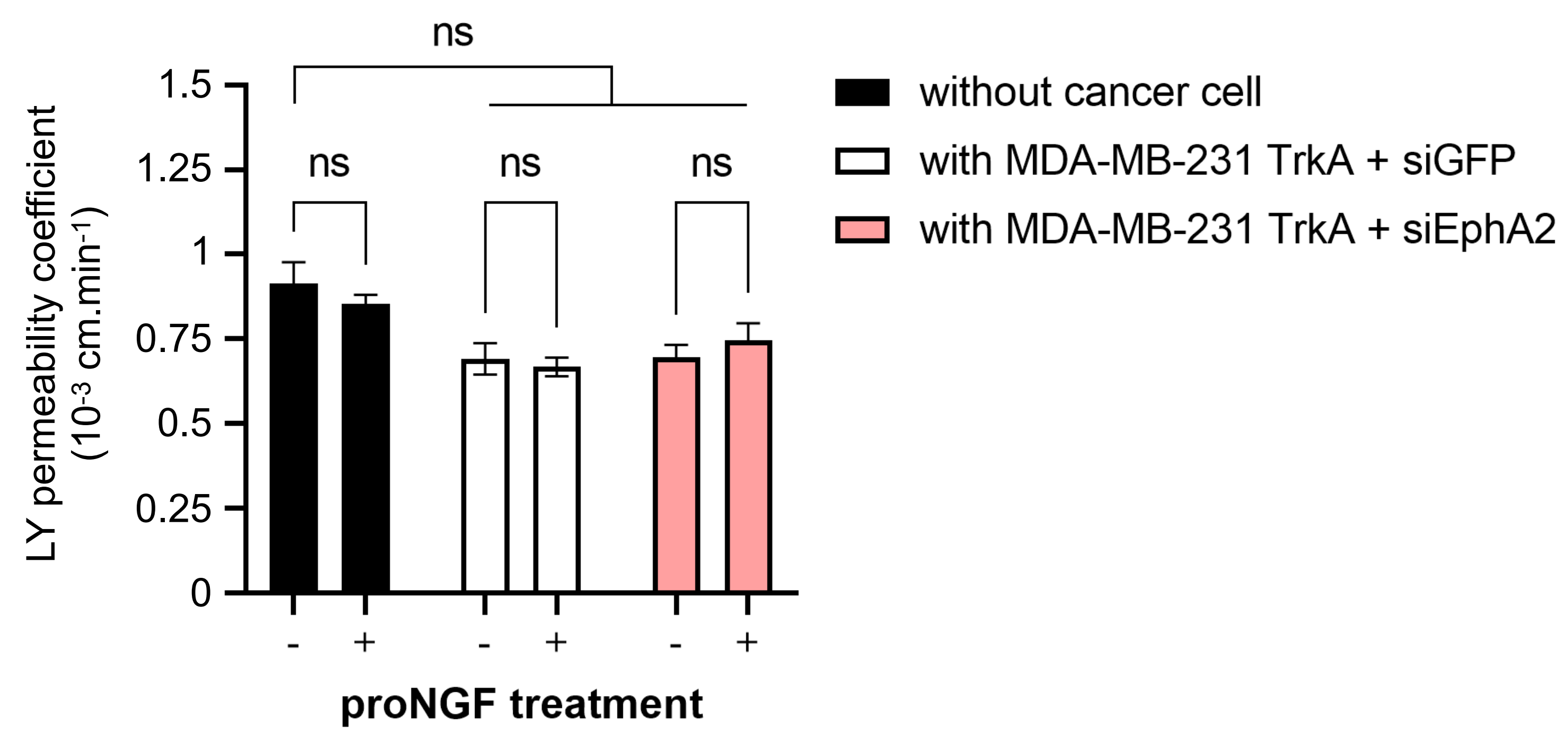
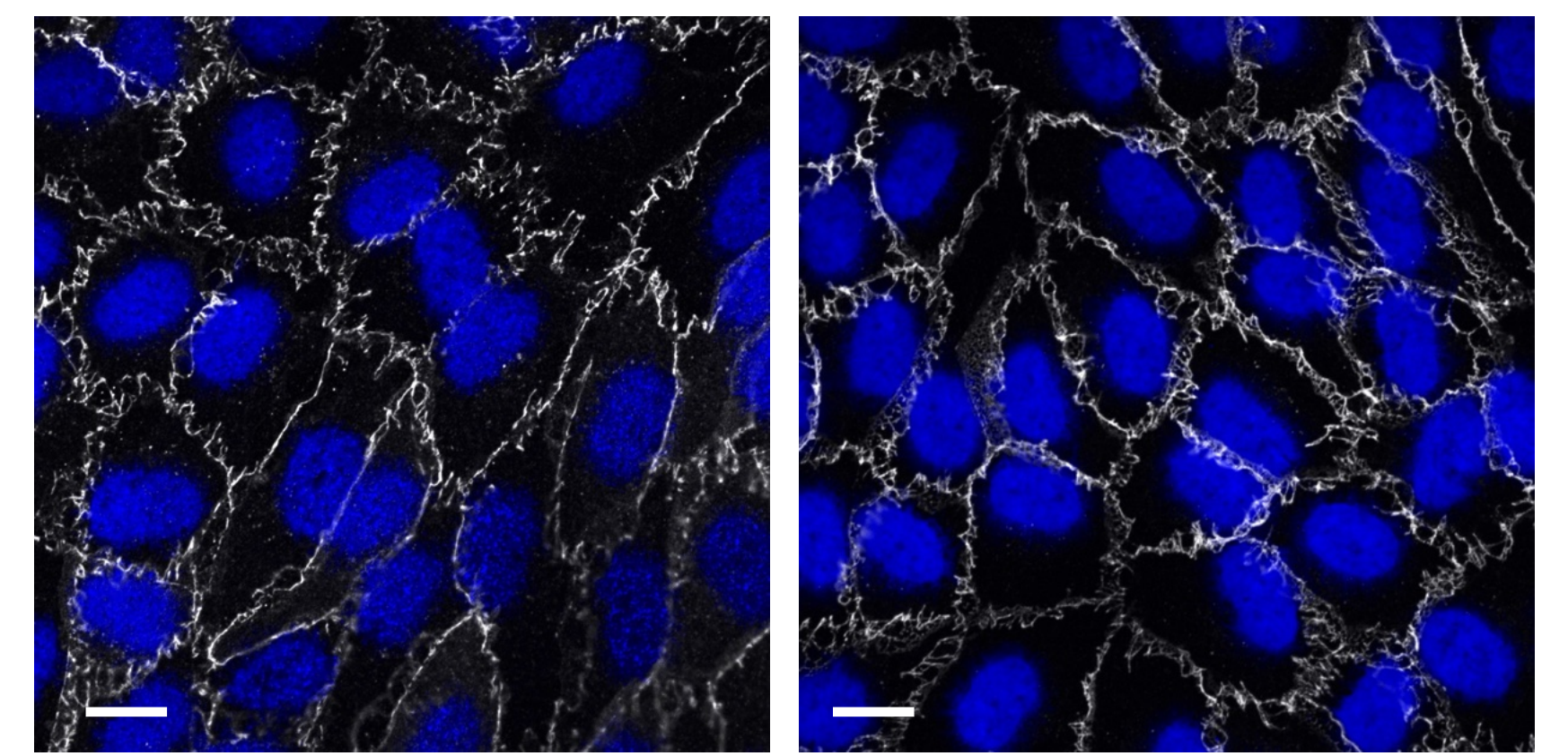
MDA-MB-231 TrkA

**E**

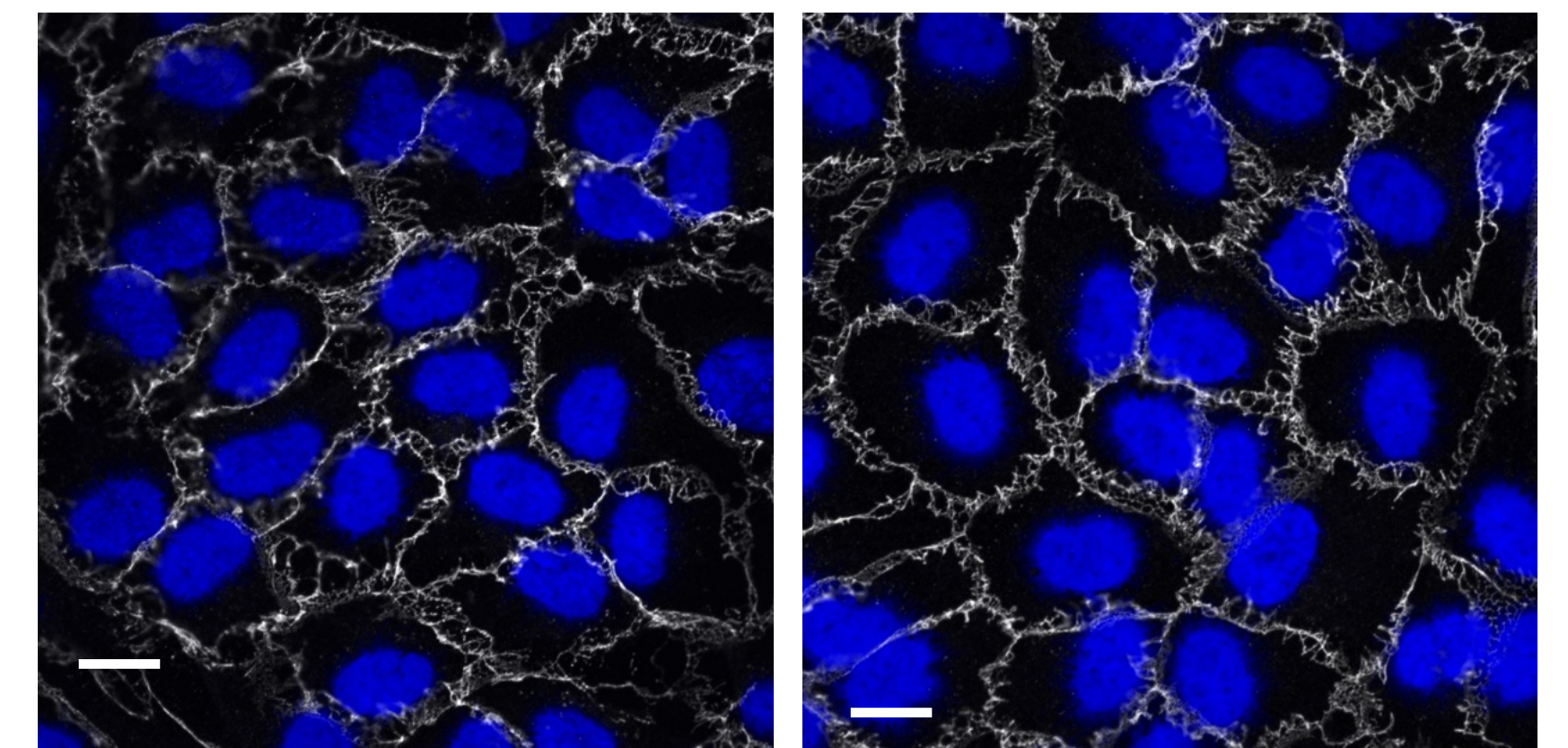
MDA-MB-231 TrkA



Figure S4

A**B**Claudin-5 (*white*) \emptyset

proNGF

CVE-Cadherin (*white*) \emptyset

proNGF

Figure S5.

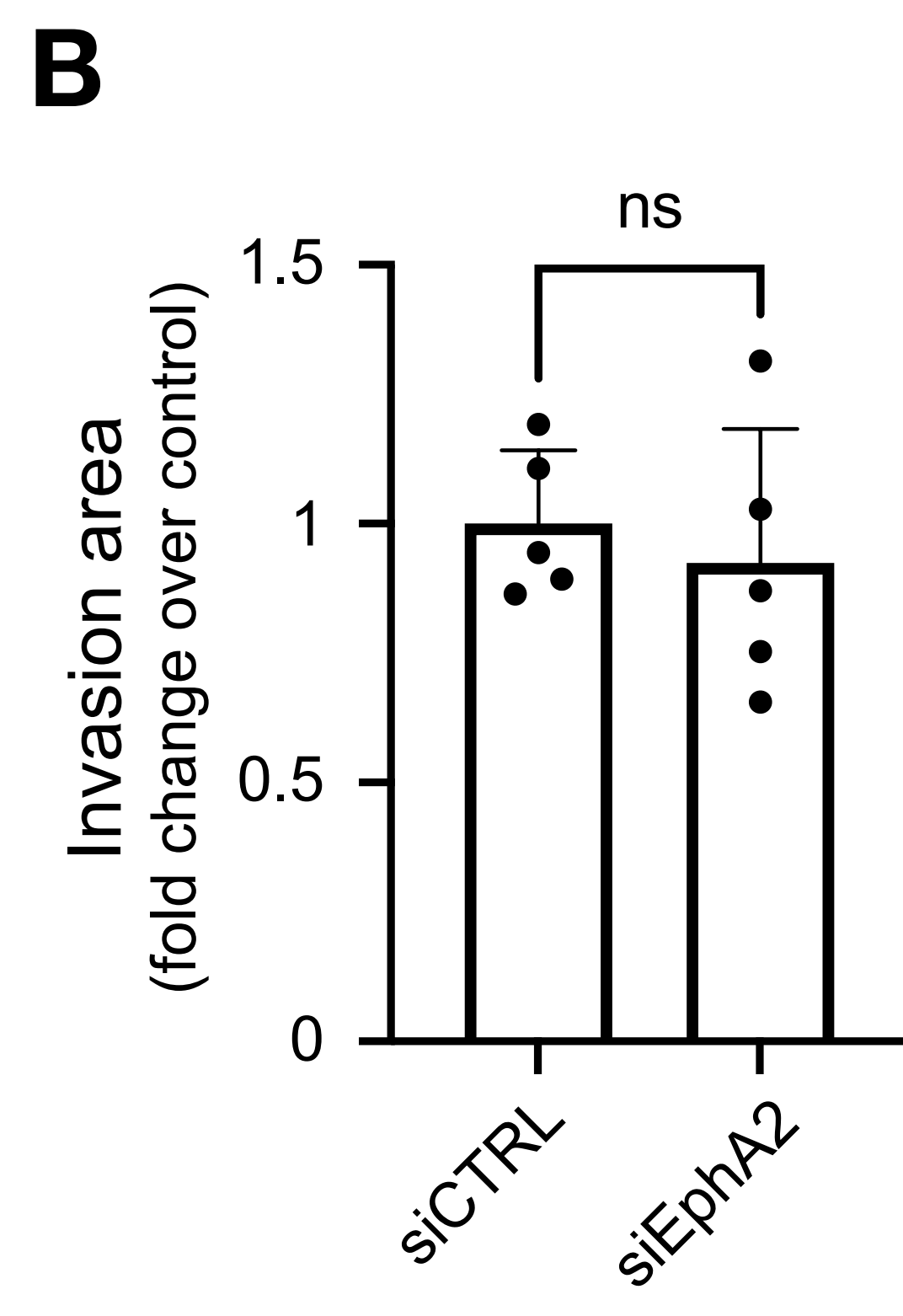
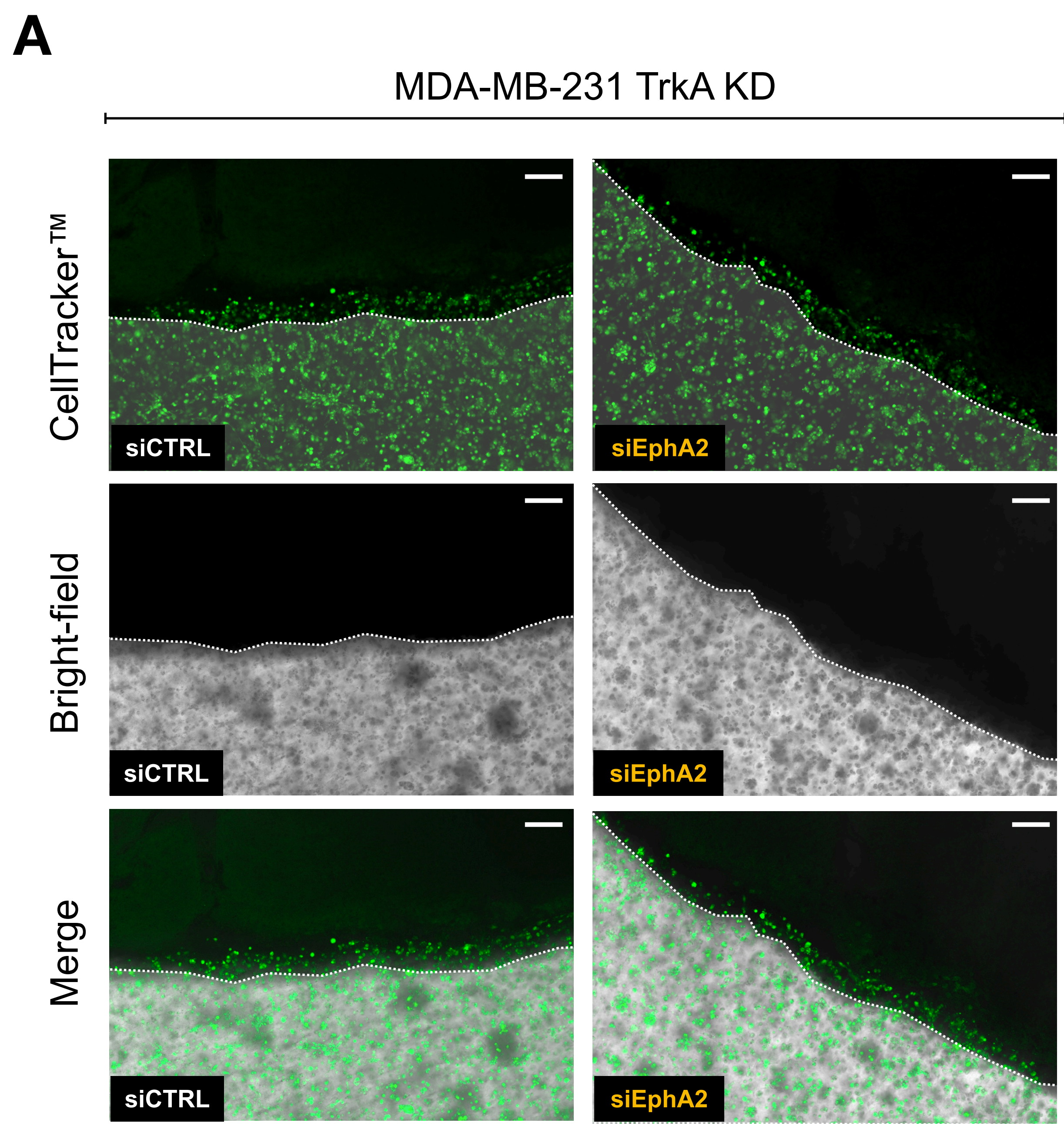
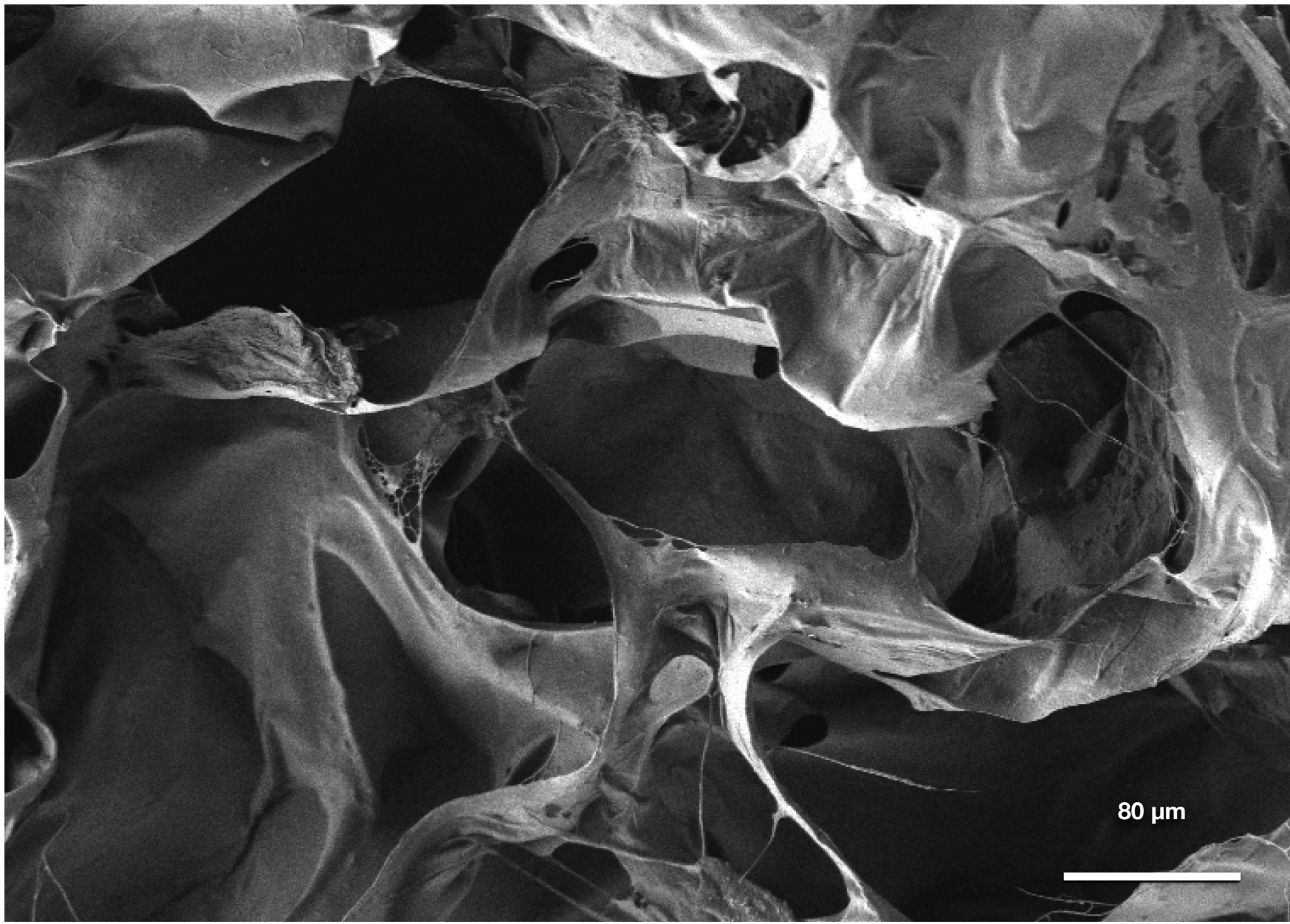


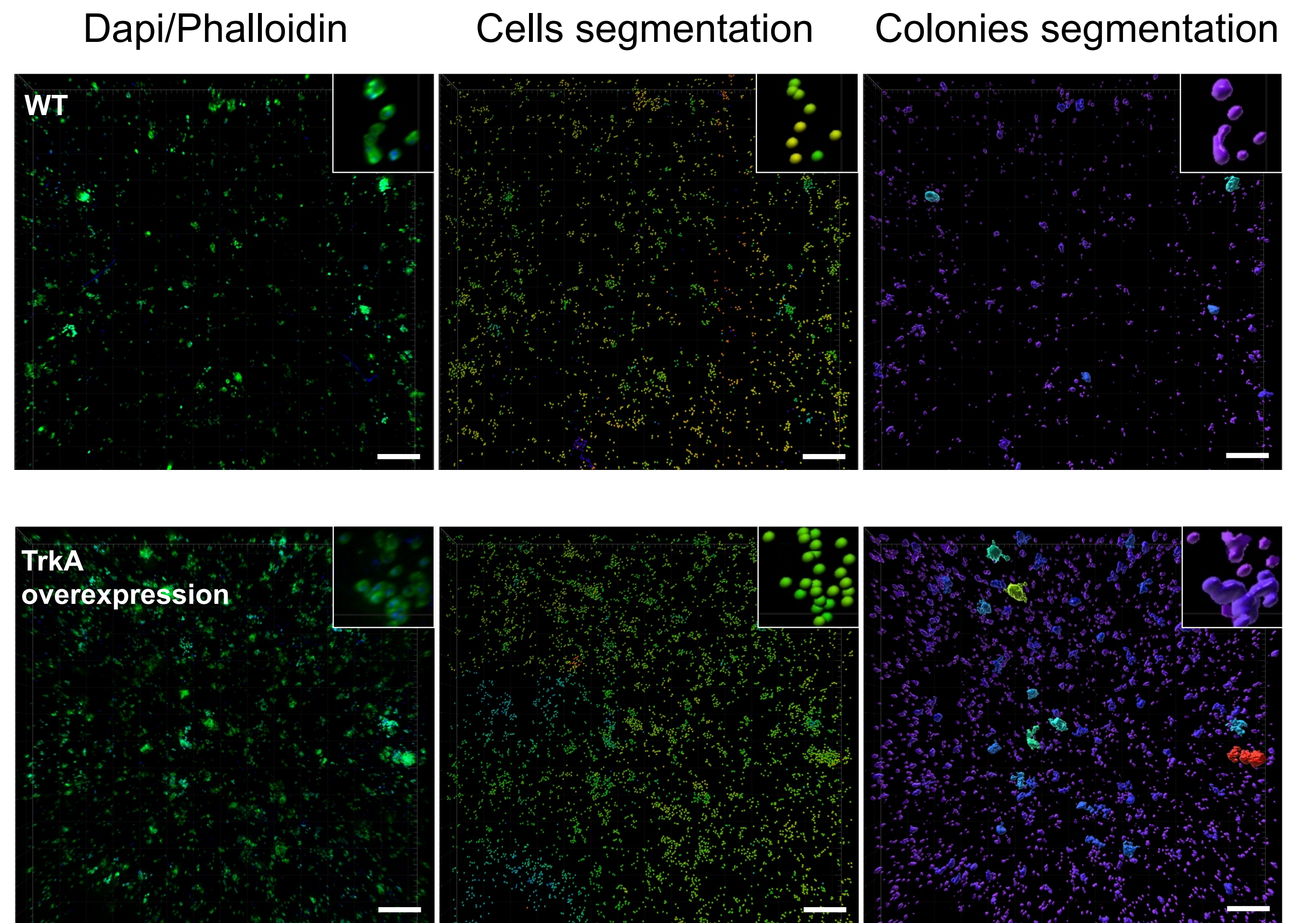
Figure S6.

A

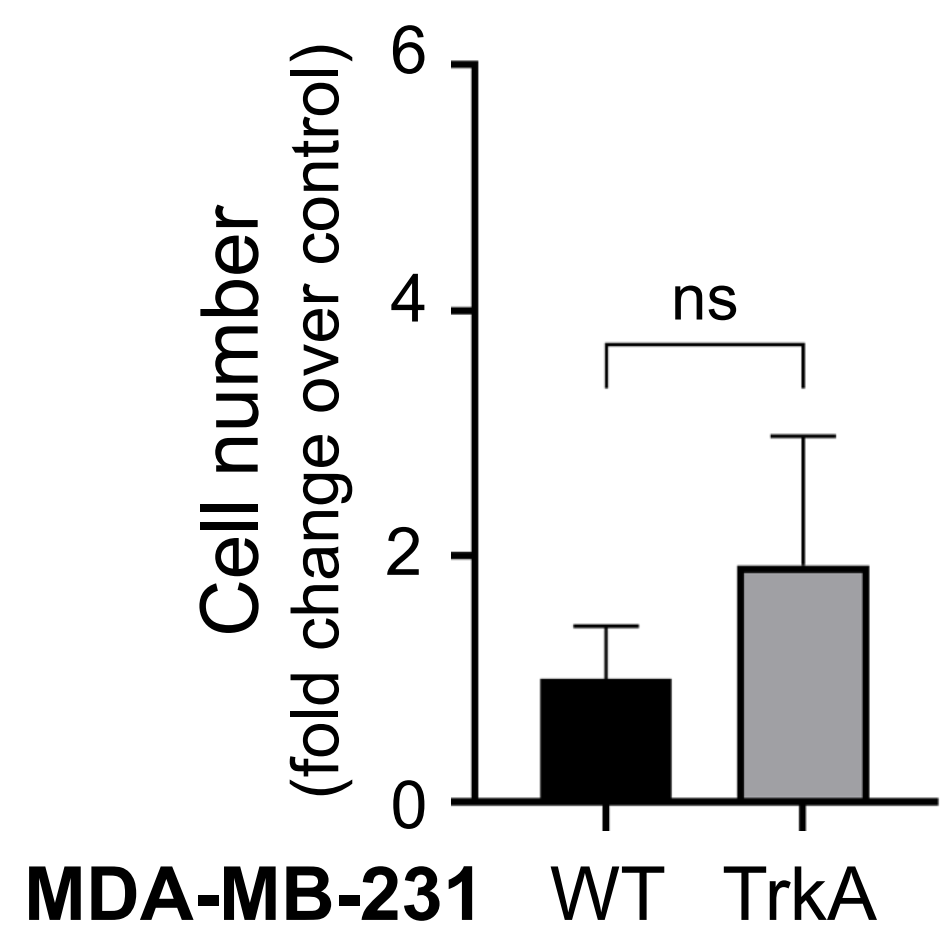
Brain-like ECM

**B**

Brain-like ECM

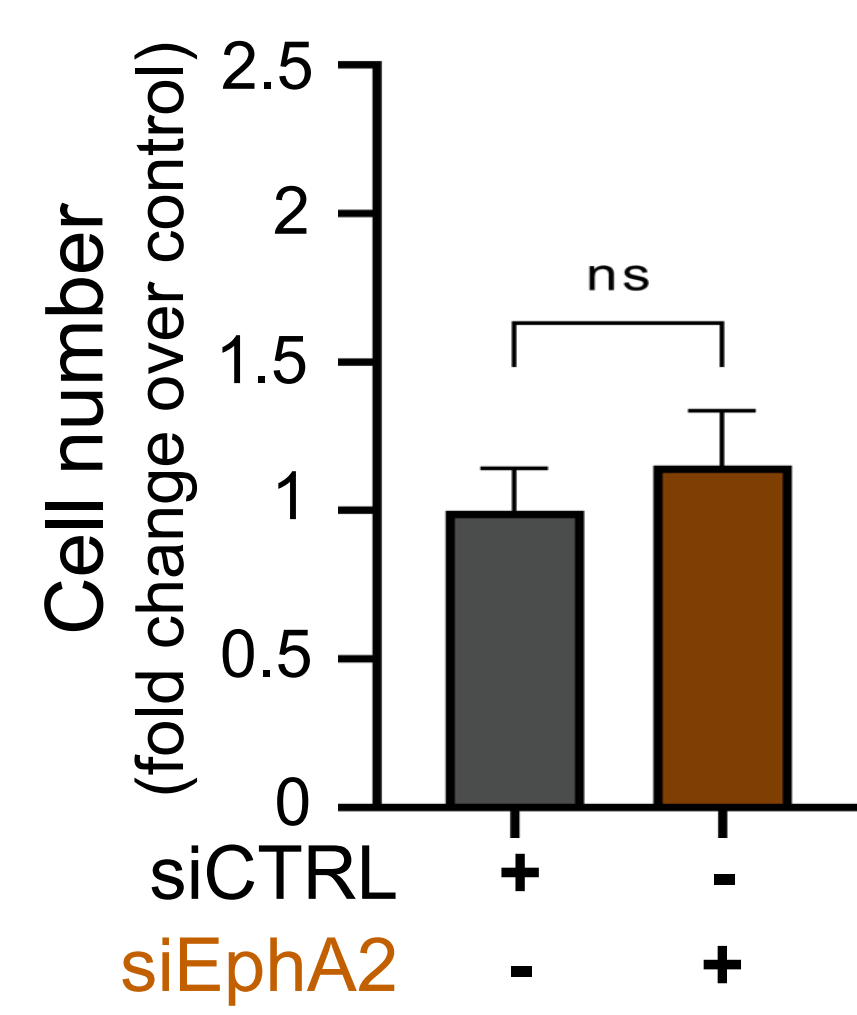
**C**

Liver-like ECM

**D**

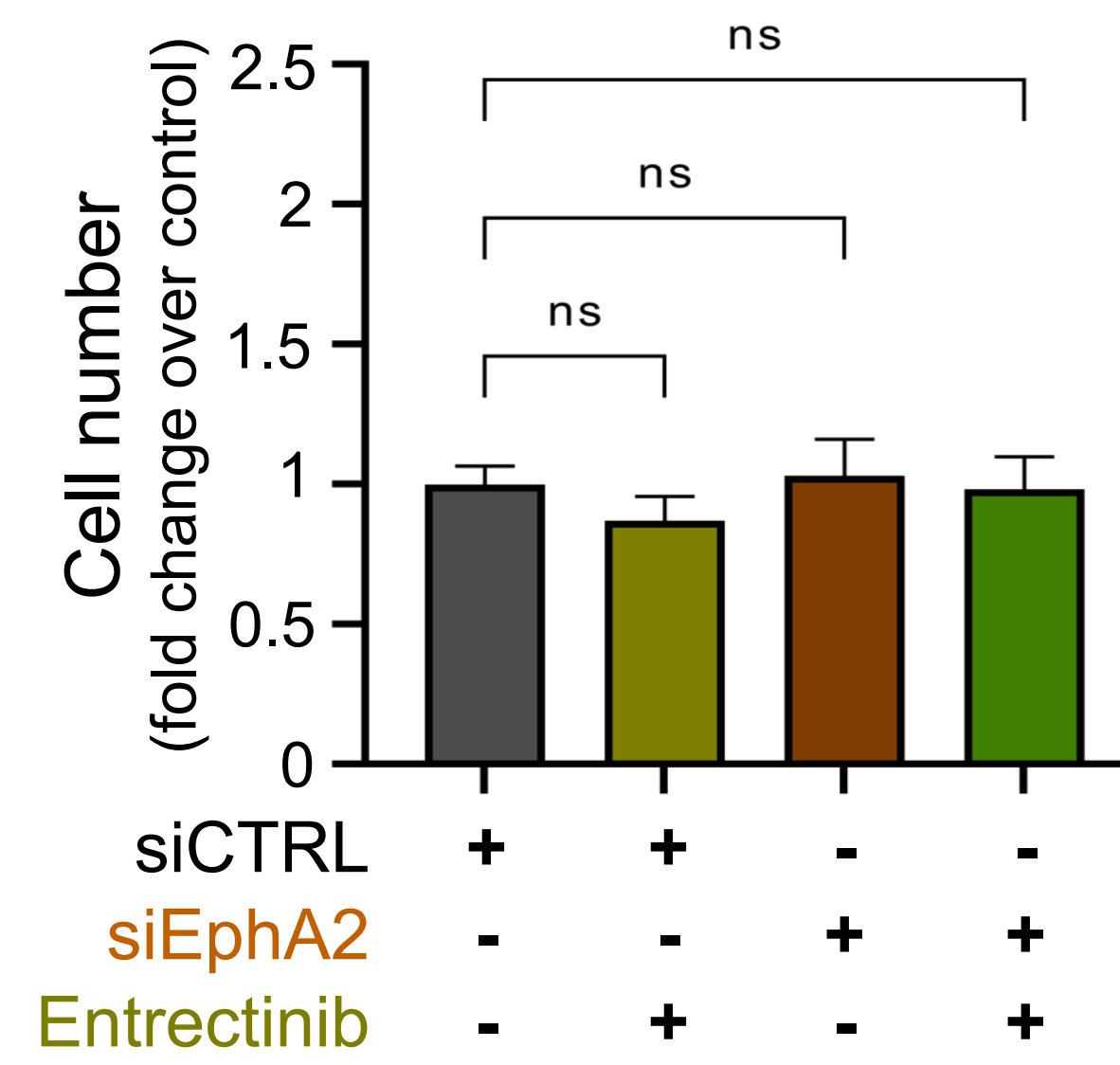
MDA-MB-231 TrkA KD

Liver-like ECM

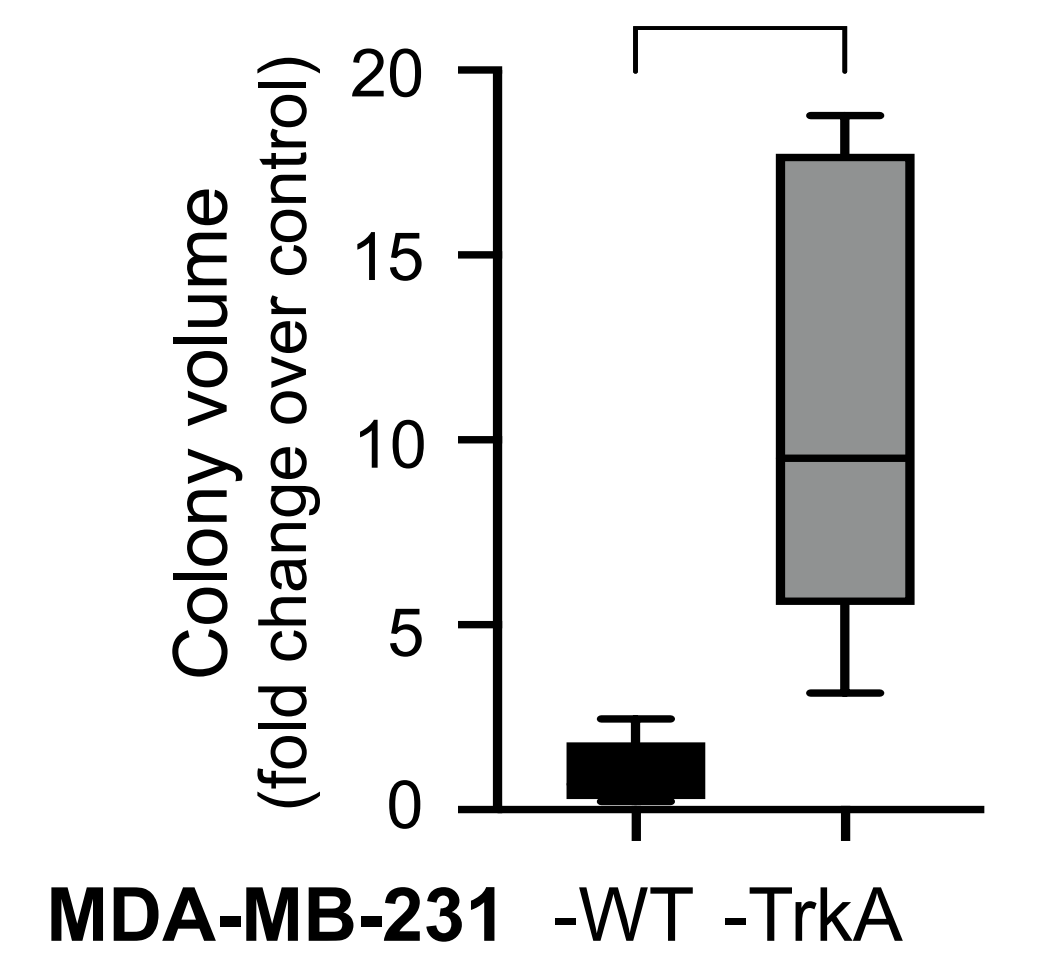
**E**

MDA-MB-231 TrkA

Liver-like ECM

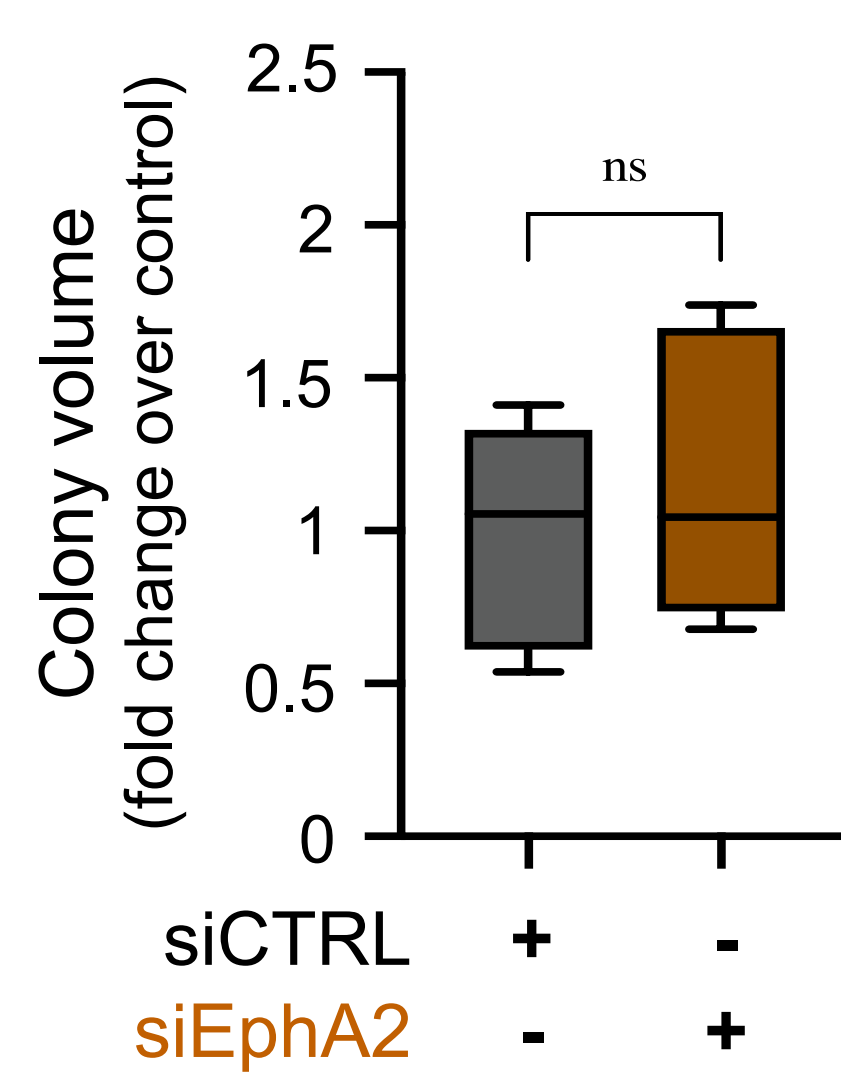
**F**

Liver-like ECM

**G**

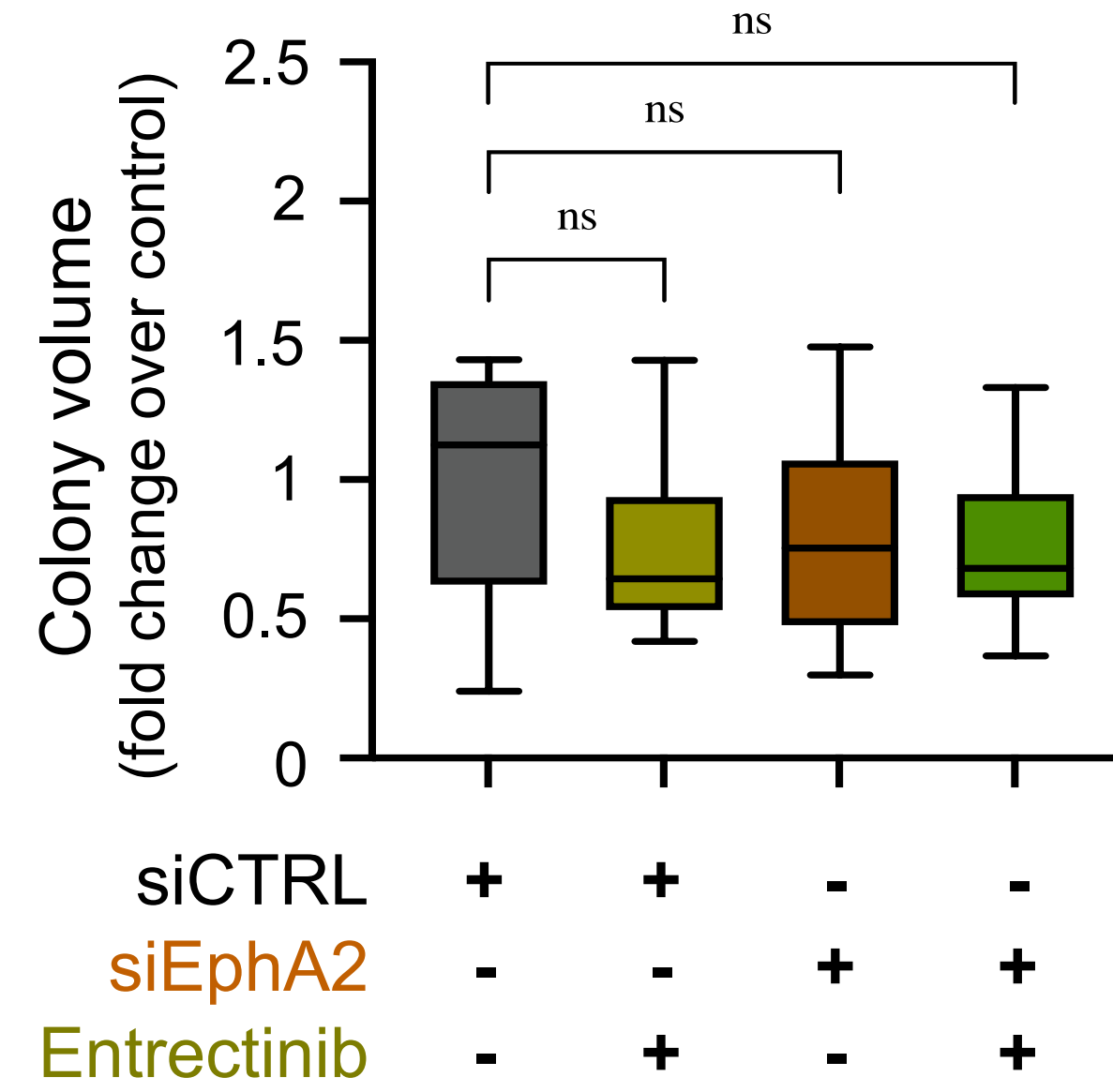
MDA-MB-231 TrkA KD

Liver-like ECM

**H**

MDA-MB-231 TrkA

Liver-like ECM



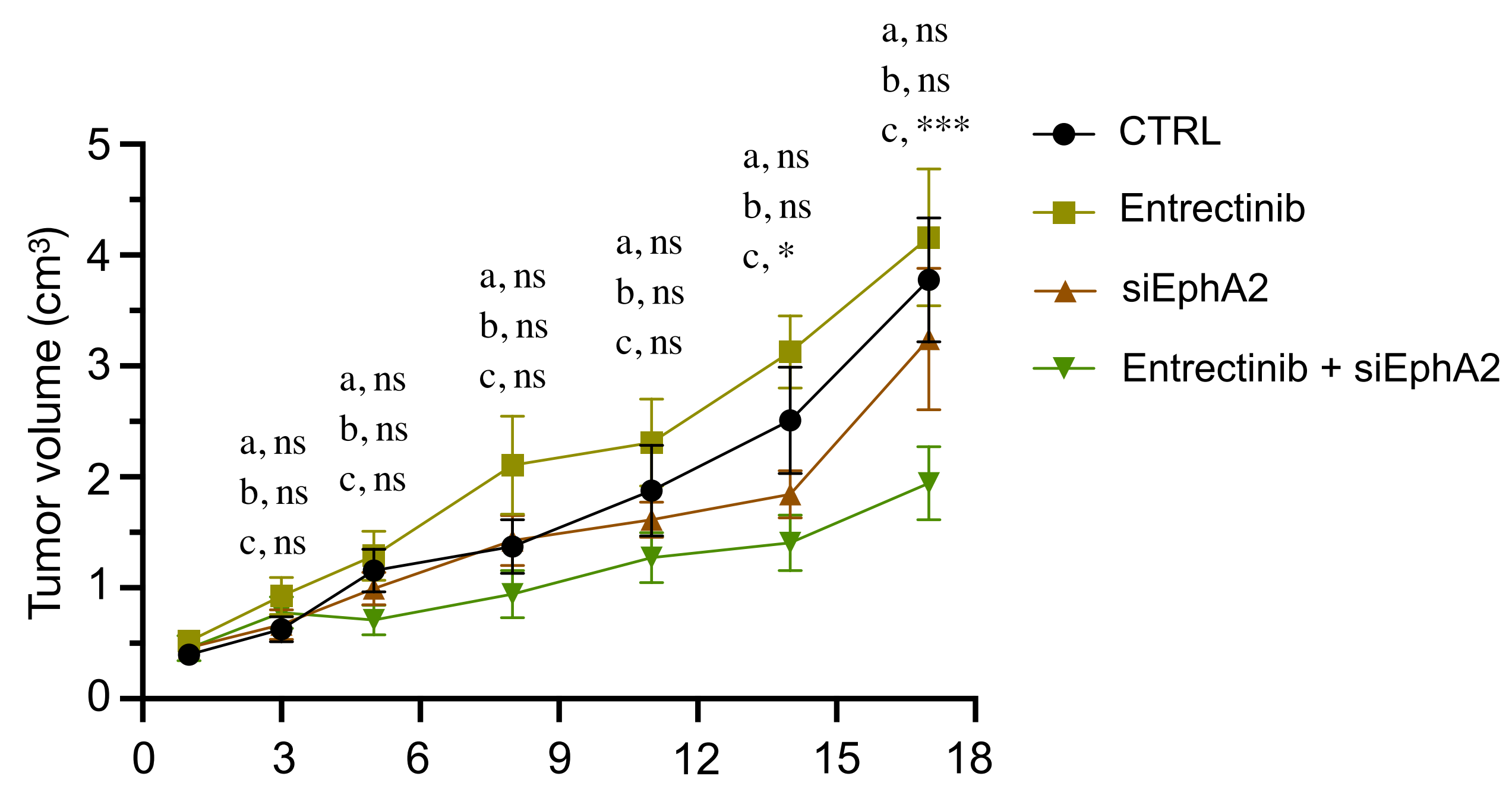
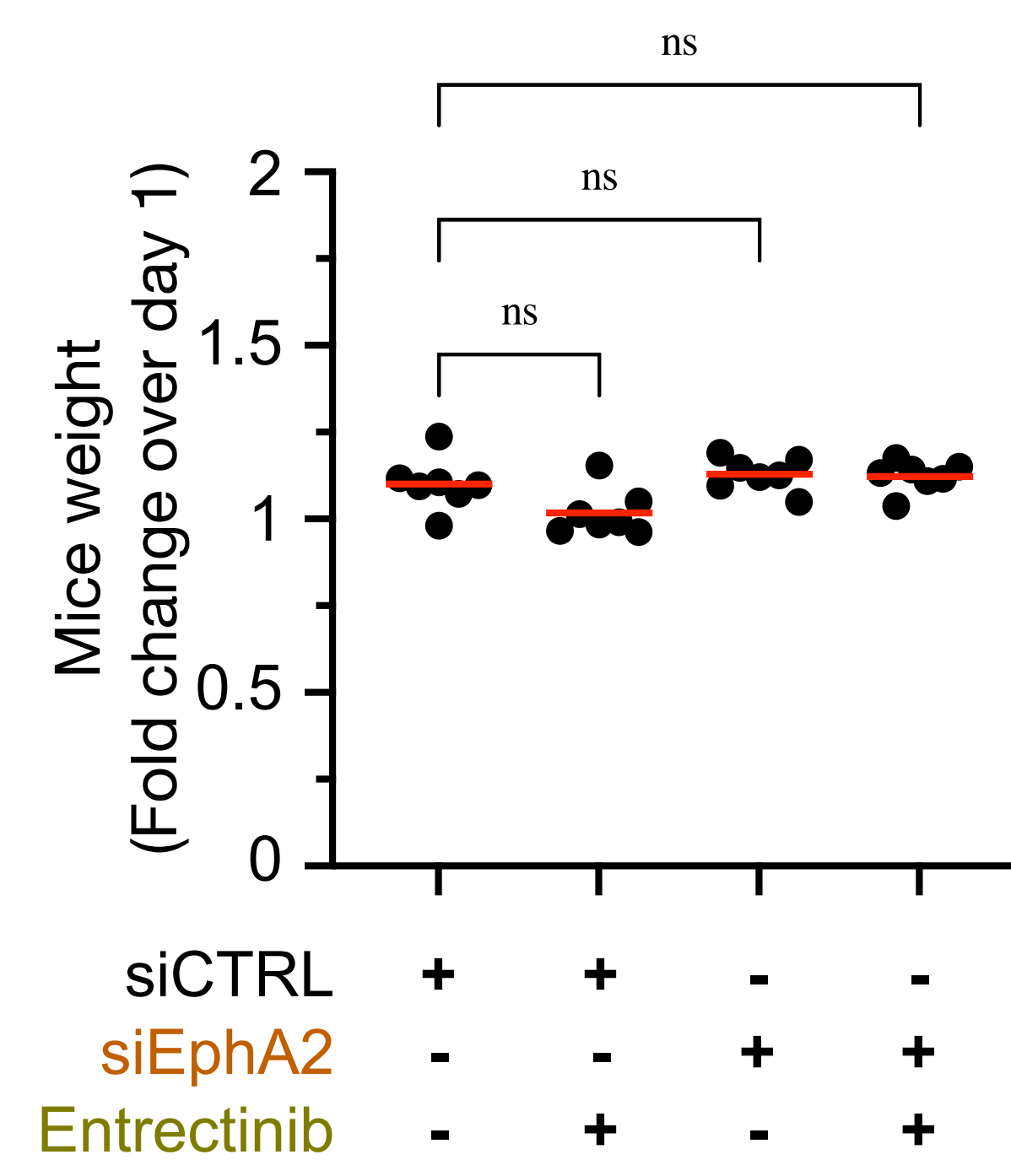
A**B**

Figure S8