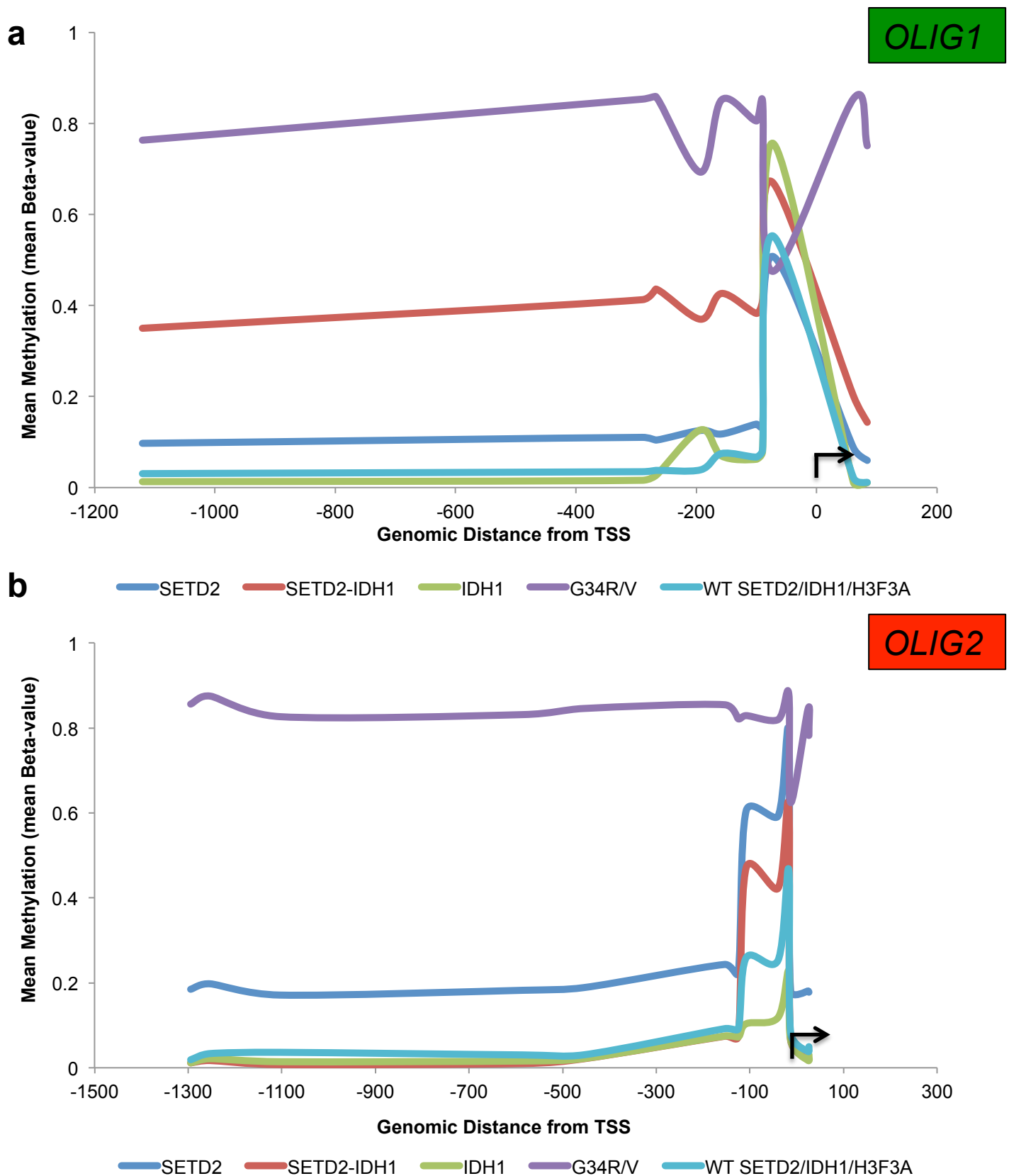


Supplementary Figure 1: Age distribution of driver mutations identified in pediatric and adult high-grade gliomas. Graphical representation of mutations identified in *SETD2*, *IDH1*, *H3F3A* (K27M, G34R/V) and *BRAF* in all pediatric and adult high-grade gliomas included in the study.



Supplementary Figure 2: *SETD2* mutations do not show similar patterns of promoter methylation at *OLIG1* and *OLIG2* loci as *H3.3K36* affected *G34R/V* tumors. **a**, Graphical representation of mean promoter methylation probe Beta-values within promoter region of *OLIG1* (**a**) and *OLIG2* (**b**). To best represent this region, probes were chosen that were within -1500bp upstream and +200bp downstream of the transcription start site (TSS).