

## **Robust Cytoplasmic Accumulation of Phosphorylated TDP-43 in Transgenic Models of Tauopathy**

Amy K. Clippinger<sup>1, 2†</sup>, Simon D'Alton<sup>1†</sup>, Wen-Lang Lin<sup>3</sup>, Tania F. Gendron<sup>3</sup>, John Howard<sup>1</sup>, David Borchelt<sup>1, 4</sup>, Ashley Cannon<sup>3</sup>, Yari Carlomagno<sup>3</sup>, Paramita Chakrabarty<sup>1</sup>, Casey Cook<sup>3</sup>, Todd E. Golde<sup>1</sup>, Yona Levites<sup>1</sup>, Laura Ranum<sup>5</sup>, Patrick Schultheis<sup>2</sup>, Guilian Xu<sup>1</sup>, Leonard Petrucelli<sup>3</sup>, Naruhiko Sahara<sup>1</sup>, Dennis W. Dickson<sup>3</sup>, Benoit Giasson<sup>1‡\*</sup>, Jada Lewis<sup>1‡\*</sup>

<sup>1</sup>Department of Neuroscience, Center for Translational Research in Neurodegenerative Disease and McKnight Brain Institute, University of Florida, Gainesville, FL32610.

<sup>2</sup>Department of Biological Sciences, Northern Kentucky University, Highland Heights, KY 41099

<sup>3</sup>Department of Neuroscience, Mayo Clinic, Jacksonville, FL32223

<sup>4</sup>SantaFe HealthCare Alzheimer's Disease Center

<sup>5</sup>Center for NeuroGenetics, Department of Molecular Genetics and Microbiology and Genetics Institute, College of Medicine, University of Florida, Gainesville, FL 32610

### **Running title: TDP-43 pathology in tau transgenic mice**

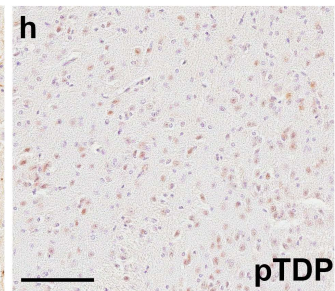
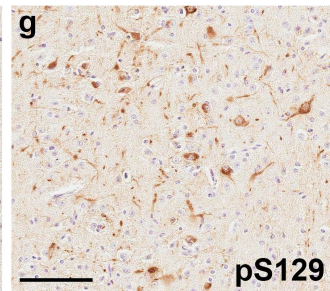
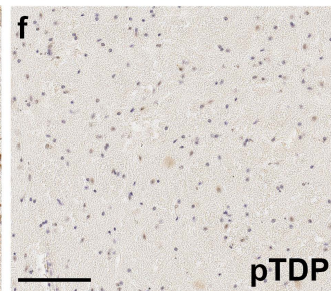
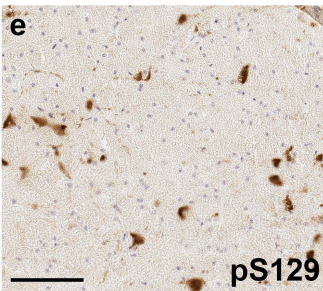
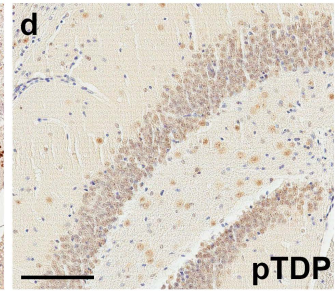
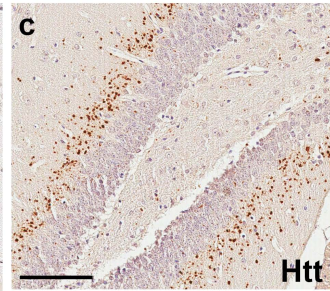
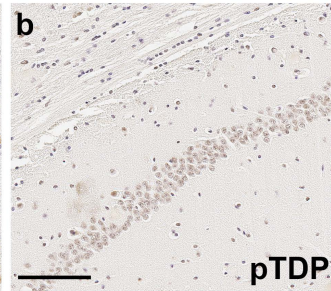
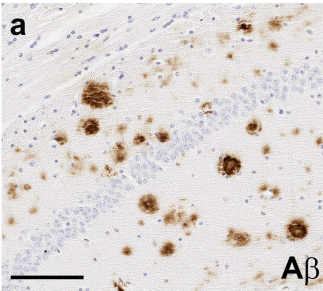
<sup>†</sup>These authors contributed equally

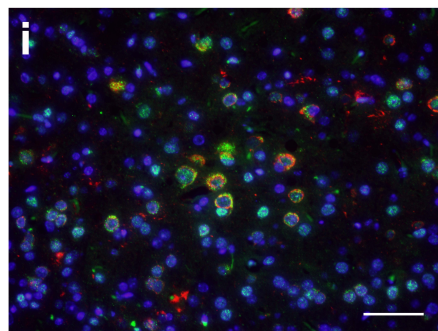
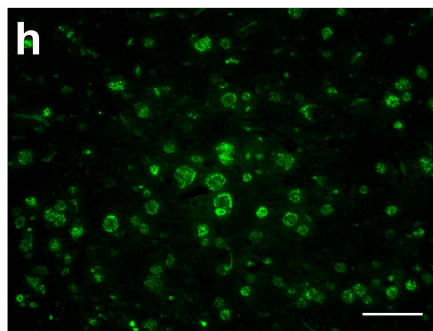
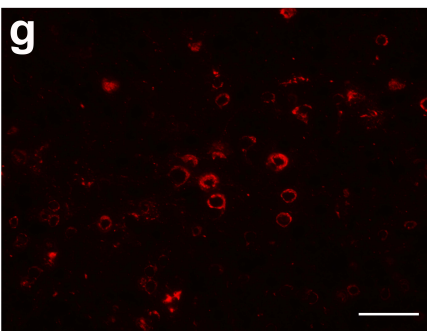
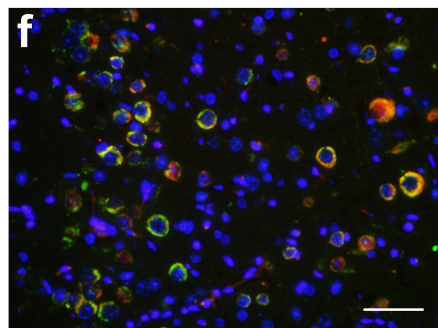
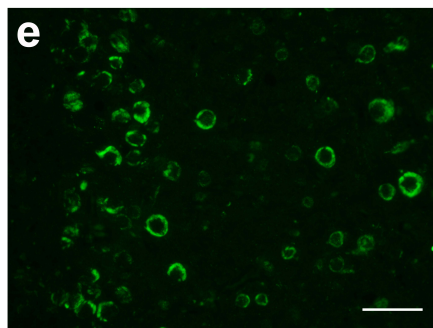
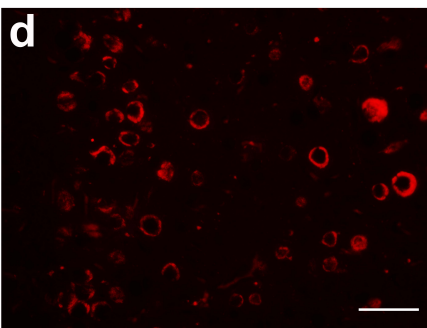
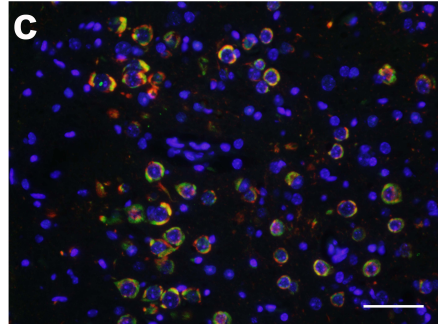
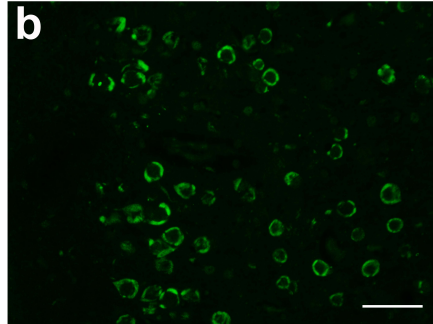
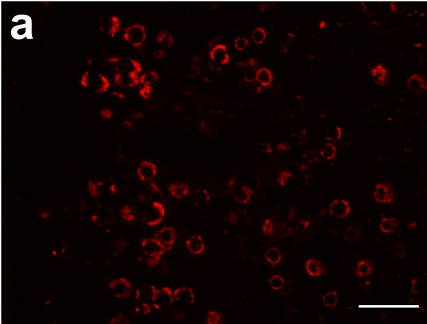
<sup>‡</sup>These authors contributed equally

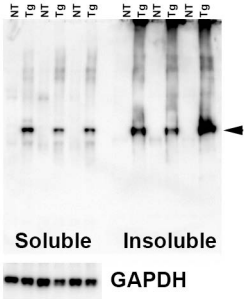
### **\*Address correspondence to:**

Dr. Benoit Giasson, Department of Neuroscience, Center for Translational Research in Neurodegenerative Disease, University of Florida, 1275 Center Drive, BMS Building J-483, PO Box 100159, Gainesville, FL32610-0244. Tel: 352-273-9363; E-mail:[bgiasson@ufl.edu](mailto:bgiasson@ufl.edu).

Dr. Jada Lewis, Department of Neuroscience, Center for Translational Research in Neurodegenerative Disease, University of Florida, 1275 Center Drive, BMS Building J-487, PO Box 100159, Gainesville, FL32610-0244. Tel: 352-273-9666; E-mail:[jada.lewis@ufl.edu](mailto:jada.lewis@ufl.edu).







Supplemental Table 1: Models that lacked TDP-43 (p409/410) cytoplasmic accumulation			
Model	Primary Pathology	Ages (months)	Total N
Tg2576	Amyloid beta plaques	9-26	11
CRND8		4-9	9
Tg2576/P246L PSEN1 KI		5-15	8
M47	Synucleinopathy	6-26	11
M83		4-15	11
N586-82Q-C63	Huntingtin aggregates	1-8	11