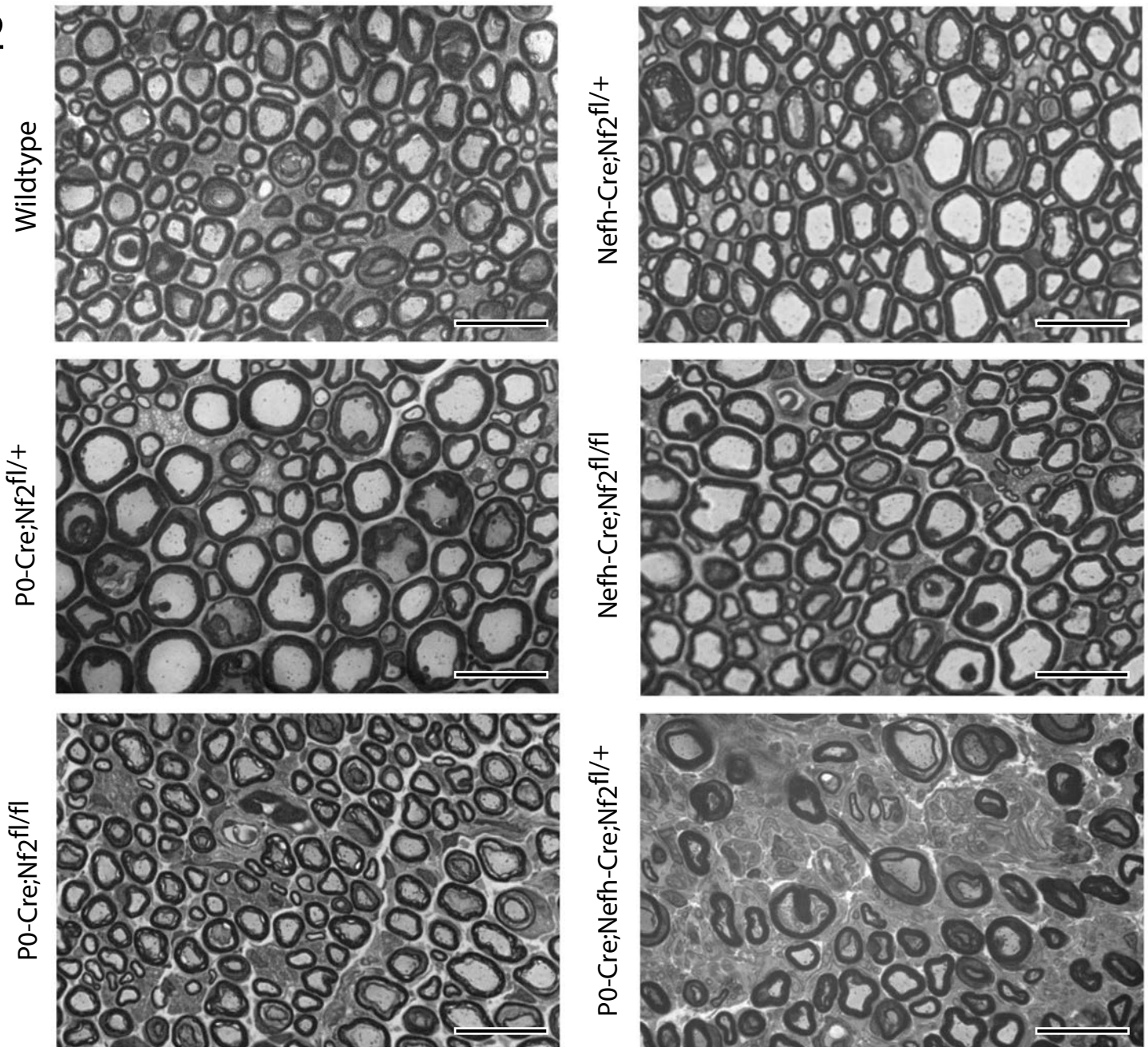
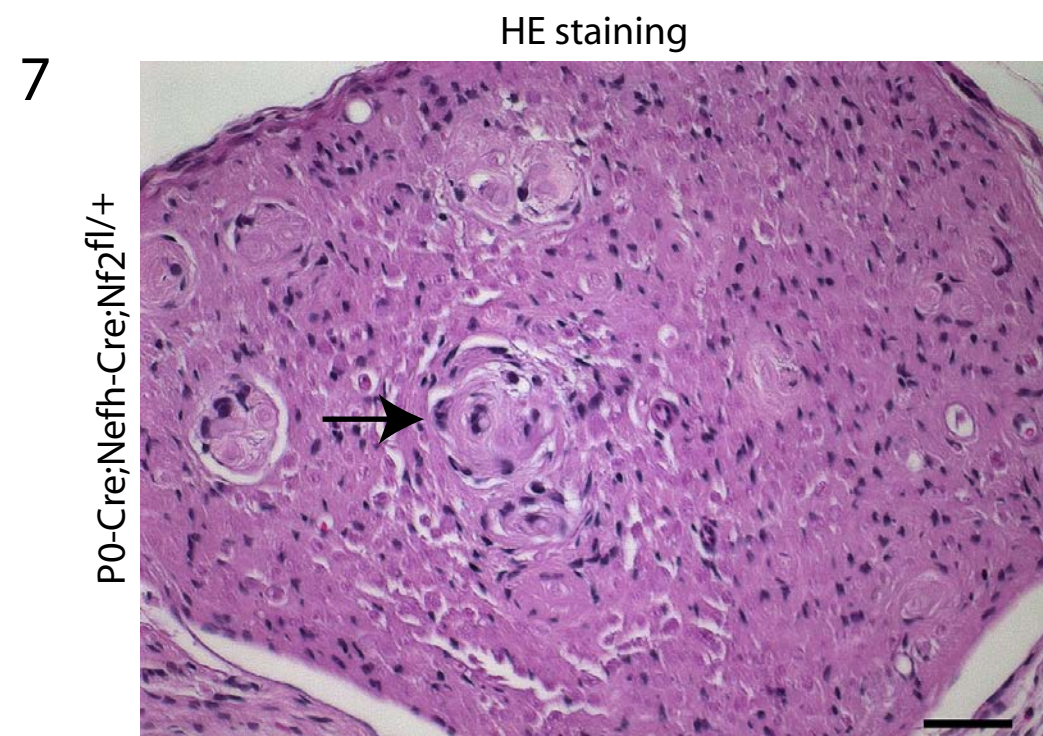
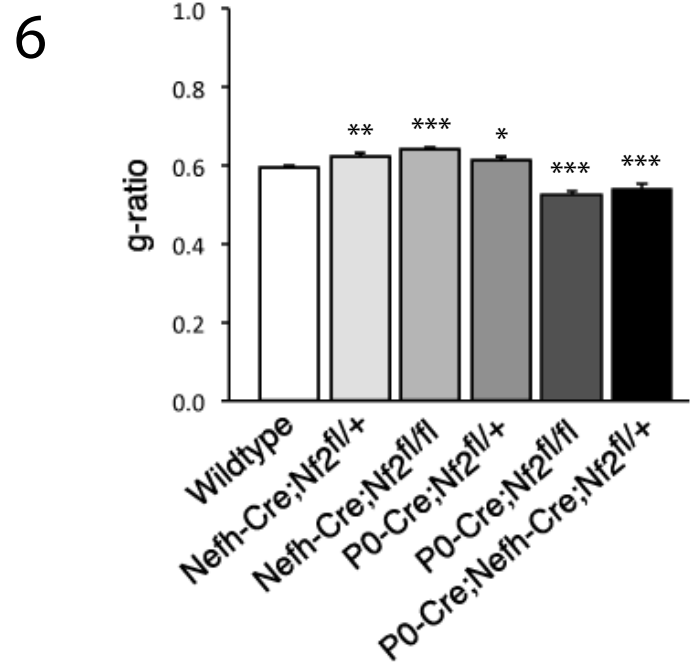
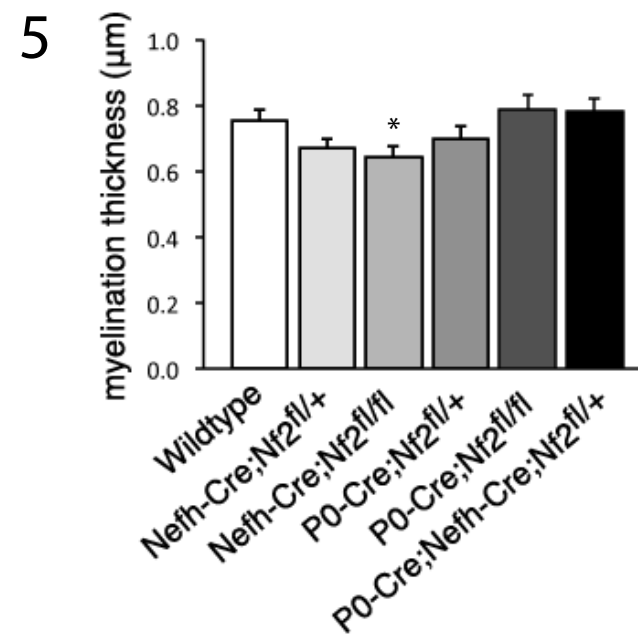
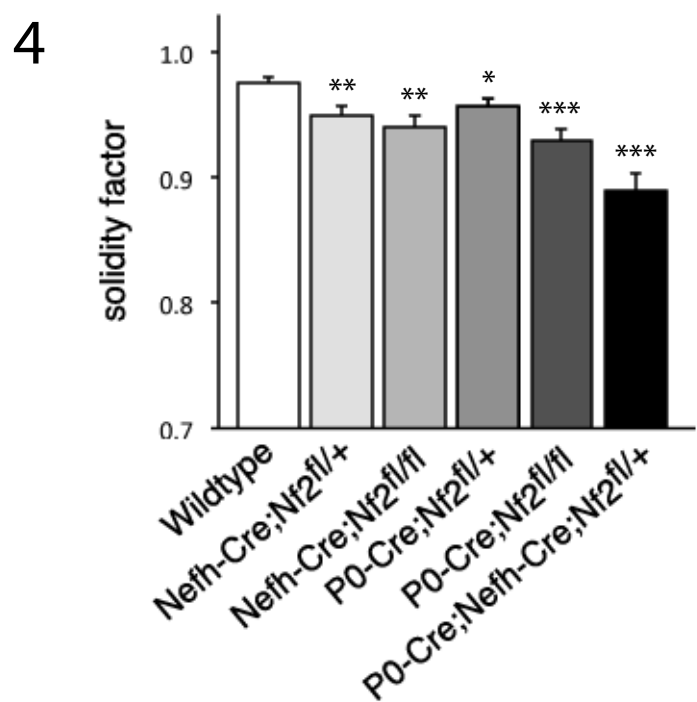
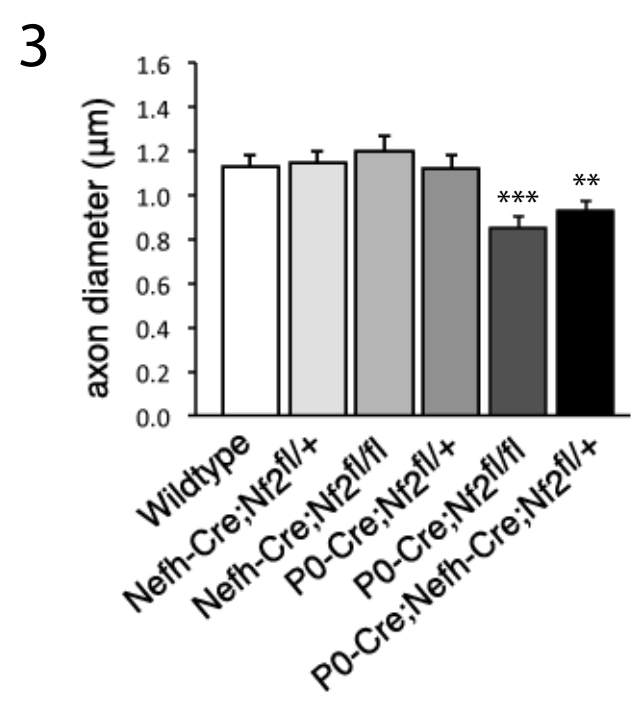


# 1 Mouse lines used in this study

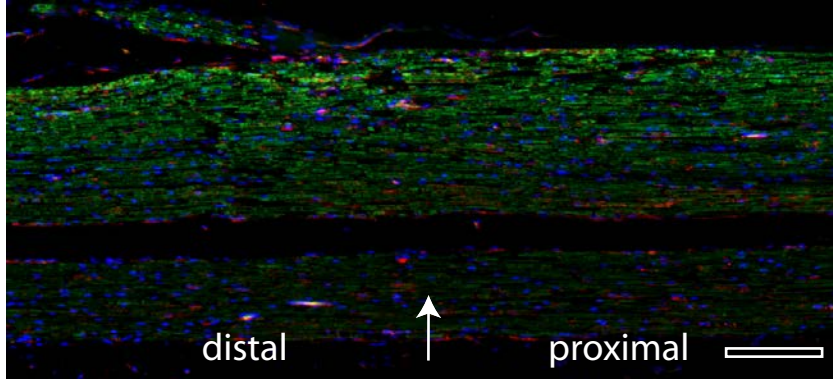
Mouse line	Description
WT	Wildtype animals
P0-Cre;Nf2 <sup>fl/+</sup>	Heterozygous loss of merlin in Schwann cells
P0-Cre;Nf2 <sup>fl/fl</sup>	Homozygous loss of merlin in Schwann cells
Nefh-Cre;Nf2 <sup>fl/+</sup>	Heterozygous loss of merlin in neurons
Nefh-Cre;Nf2 <sup>fl/fl</sup>	Homozygous loss of merlin in neurons
P0-Cre;Nefh-Cre;Nf2 <sup>fl/+</sup>	Heterozygous loss of merlin in Schwann cells and neurons

# 2

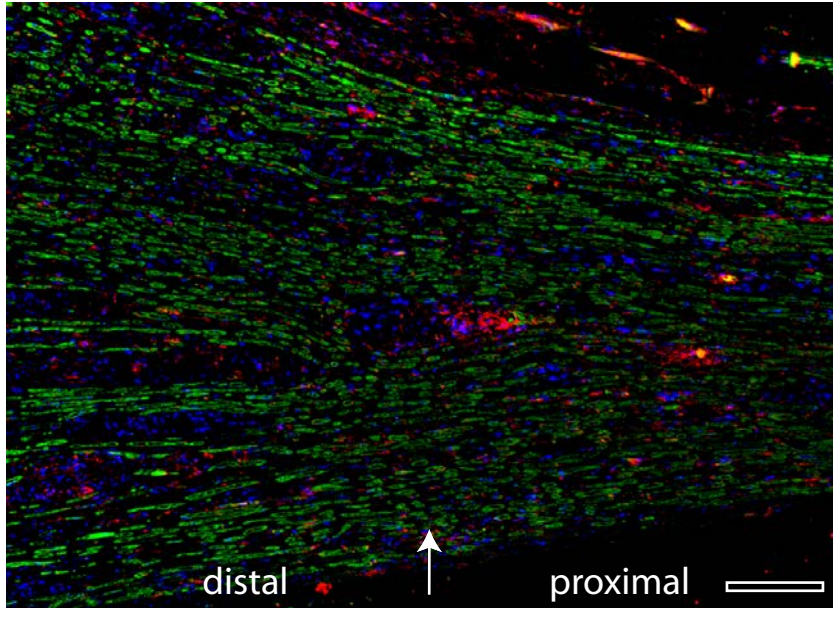




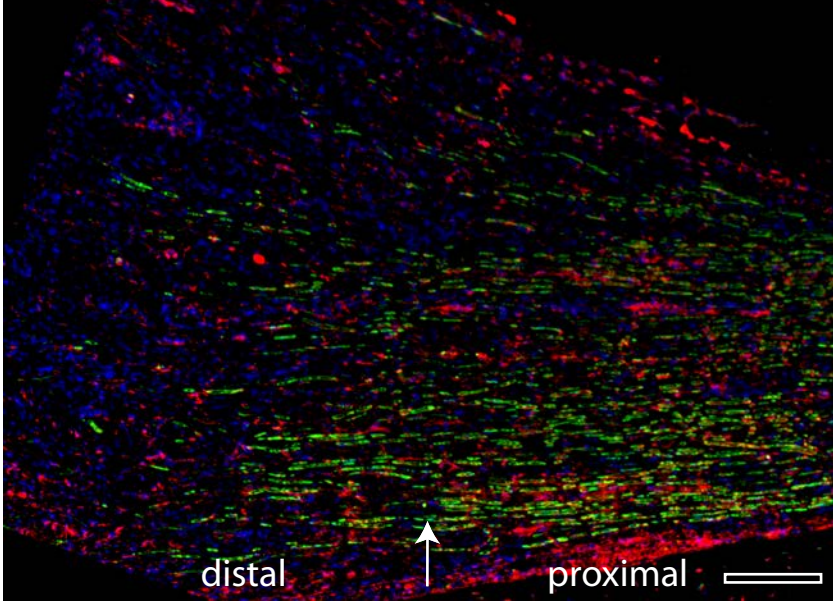
Wildtype



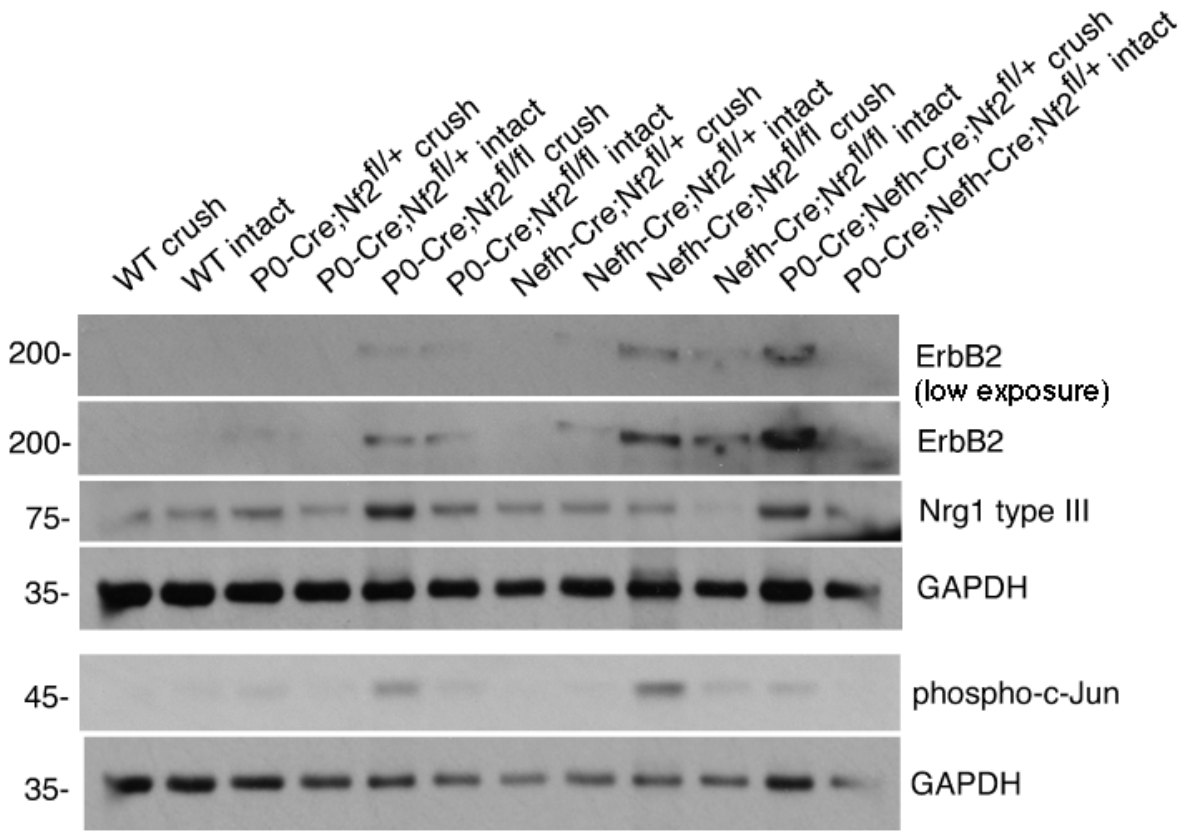
P0-Cre;Nf2<sup>fl/fl</sup>



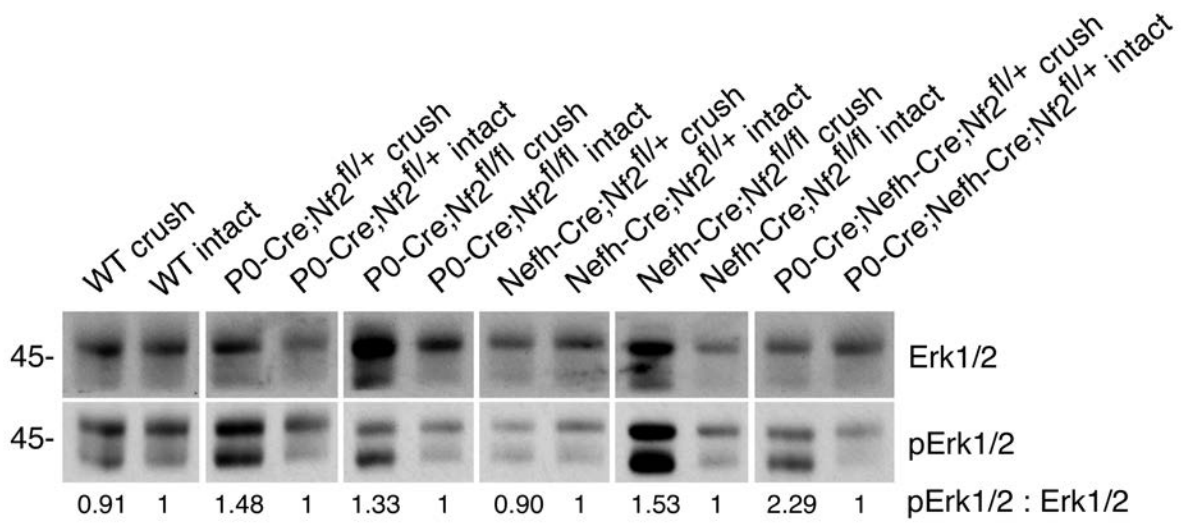
P0-Cre;Nefh-Cre;Nf2<sup>fl/fl</sup>/+



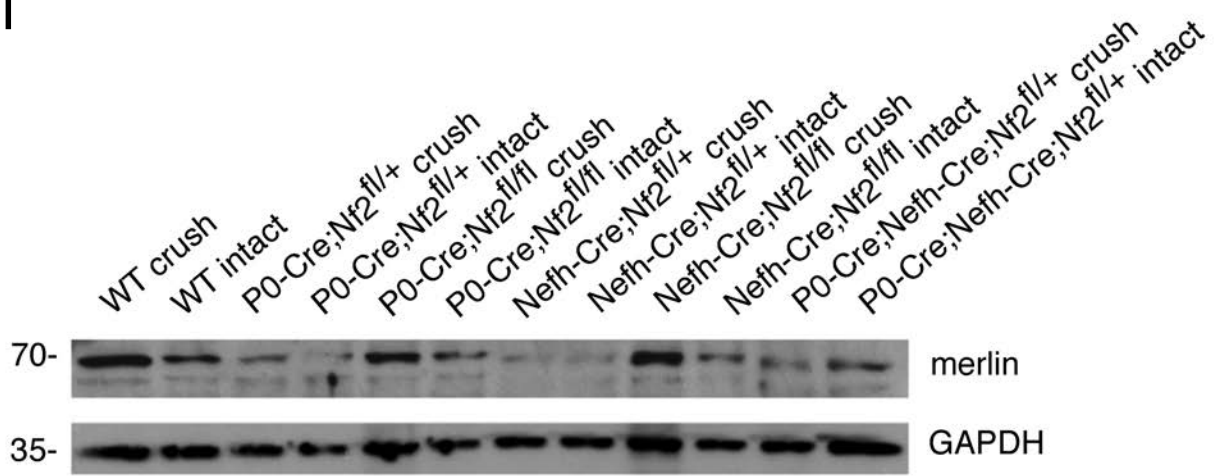
9



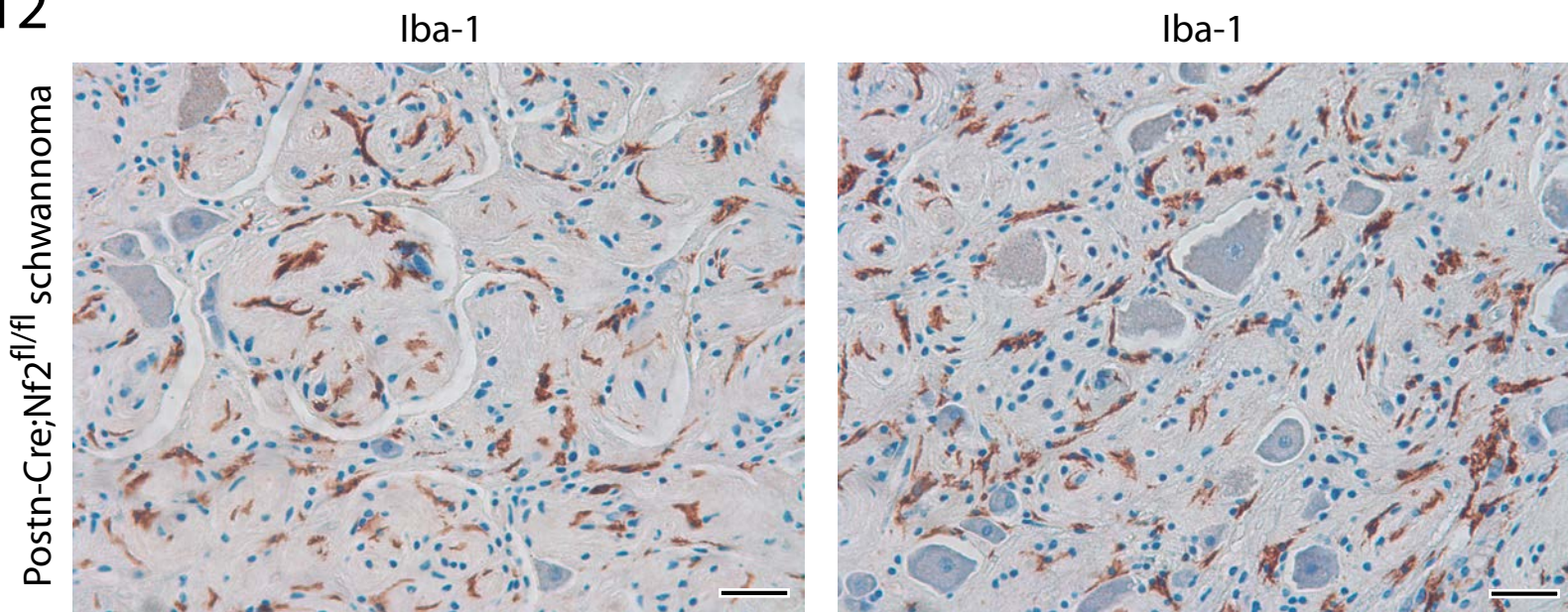
10



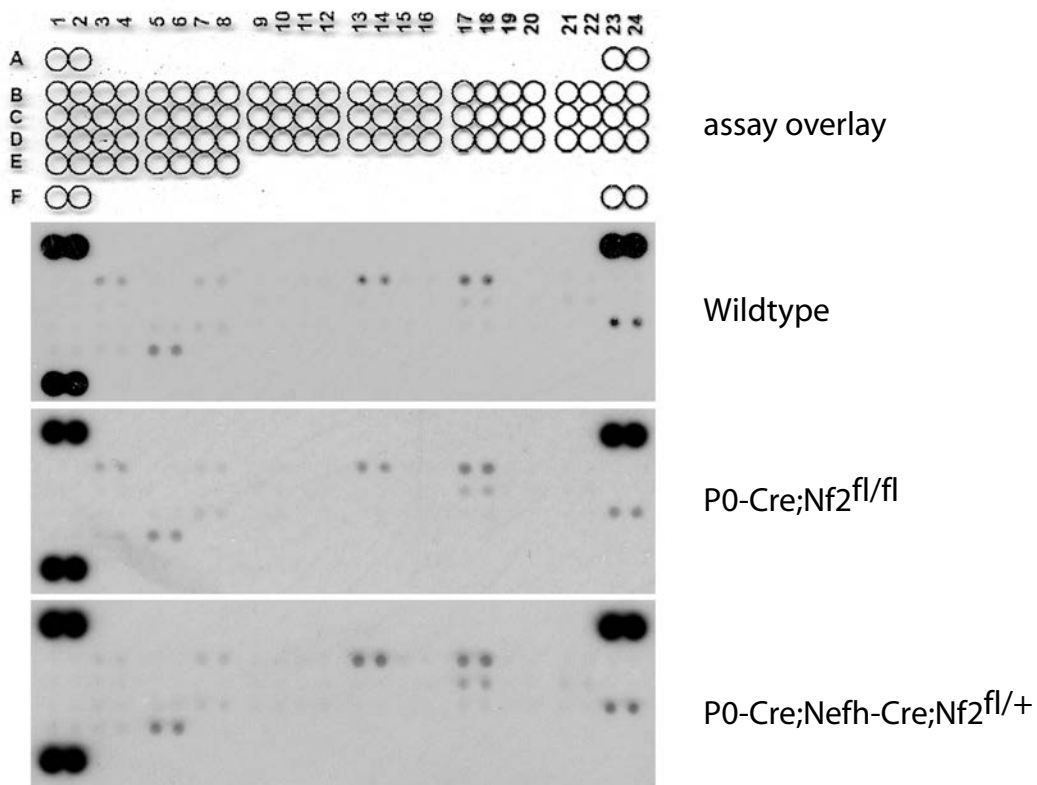
11



12



13



P0-Cre;Nefh-Cre;Nf2<sup>fl/+</sup>

vehicle



aspirin

