

Supplementary Figures 1-8

Tumour compartment transcriptomics demonstrate the activation of inflammatory and odontogenic programmes in human adamantinomatous craniopharyngioma and identify the MAPK/ERK pathway as novel therapeutic target

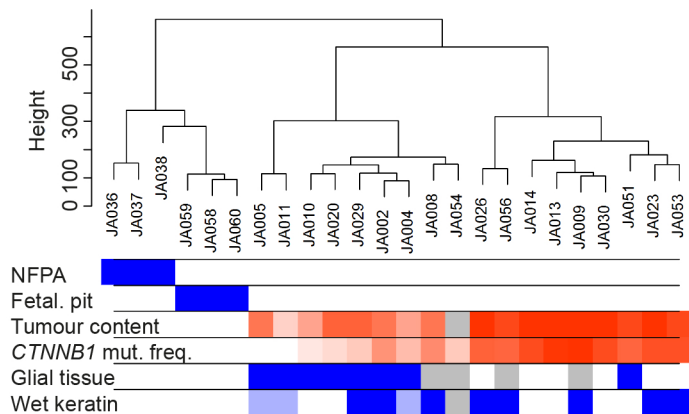
John R. Apps^{1,2,*}, Gabriela Carreno¹, Jose Mario Gonzalez-Meljem^{1,3}, Scott Haston¹, Romain Guiho¹, Julie E. Cooper¹, Saba Manshaei¹, Nital Jani⁴, Annett Hölsken⁵, Benedetta Pettorini⁶, Robert J. Beynon⁷, Deborah M. Simpson⁷, Helen C. Fraser¹, Ying Hong⁸, Shirleen Hallang⁹, Thomas J. Stone^{1,2}, Alex Virasami², Andrew M. Donson¹⁰, David Jones¹¹, Kristian Aquilina¹², Helen Spoudeas¹³, Abhijit R. Joshi¹⁴, Richard Grundy¹⁵, Lisa CD Storer¹⁵, Márta Korbonits¹⁶, David A. Hilton¹⁷, Kyoko Tossell¹⁸, Selvam Thavaraj¹⁹, Mark A. Ungless¹⁸, Jesus Gil¹⁸, Rolf Buslei^{5,20}, Todd Hankinson¹⁰, Darren Hargrave²¹, Colin Goding²², Cynthia L. Andoniadou^{23,24}, Paul Brogan^{8,25}, Thomas S. Jacques^{1,2}, Hywel J. Williams⁴ and Juan Pedro Martinez-Barbera^{1,*}

- 1) Developmental Biology and Cancer Programme, Birth Defects Research Centre, UCL Great Ormond Street Institute of Child Health, University College London, London, UK
- 2) Histopathology Department, Great Ormond Street Hospital NHS Trust, London, UK
- 3) Basic Research Department, National Institute of Geriatrics, Mexico City, Mexico
- 4) Centre for Translational Omics - GOSgene, Genetics and Genomic Medicine Programme, UCL Institute of Child Health, University College London, London, UK
- 5) Department of Neuropathology, Friedrich-Alexander University Erlangen-Nürnberg (FAU), Erlangen, Germany
- 6) Alder Hey Children's Hospital NHS Foundation Trust, Liverpool, UK
- 7) Centre for Proteome Research, Institute of Integrative Biology, University of Liverpool, UK
- 8) Infection, Immunity and Inflammation Programme, UCL Great Ormond Street Institute of Child Health, University College London, London, UK
- 9) Centre for Craniofacial and Regenerative Biology, King's College London, London, UK
- 10) Department of Pediatrics, University of Colorado Anschutz Medical Campus, Aurora, Colorado
- 11) German Cancer Research Center (DKFZ), Heidelberg, Germany
- 12) Neurosurgery Department, Great Ormond Street Hospital NHS Trust, London, UK
- 13) Endocrinology Department, Great Ormond Street Hospital NHS Trust, London, UK
- 14) Laboratory Medicine, Royal Victoria Infirmary, Newcastle, UK
- 15) Children's Brain Tumour Research Centre, University of Nottingham, Nottingham, UK
- 16) William Harvey research Institute, Barts and the London School of Medicine and Dentistry, Queen Mary University, London, UK
- 17) Pathology Department, Plymouth Hospitals NHS Trust, Plymouth, UK
- 18) MRC London Institute of Medical Sciences, Imperial College London, London, UK
- 19) Head and Neck Pathology, Dental Institute, King's College London, London, UK
- 20) Institute of Pathology, Klinikum Sozialstiftung Bamberg, Bamberg, Germany
- 21) Haematology and Oncology department, Great Ormond Street Hospital NHS Trust, London, UK
- 22) Ludwig Institute for Cancer Research, Oxford University, Old Road Campus, Headington, Oxford, UK
- 23) Centre for Craniofacial and Regenerative Biology, King's College London, Guy's Hospital, Floor 27 Tower Wing, London, UK
- 24) Department of Internal Medicine III, Technische Universität Dresden, Fetscherstraße 74, 01307 Dresden, Germany
- 25) Rheumatology department, Great Ormond Street Hospital NHS Trust, London, UK

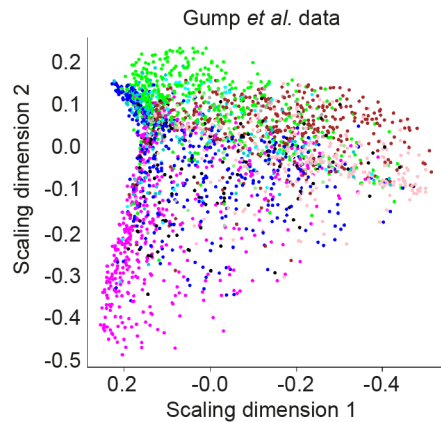
* Corresponding authors: John Apps j.apps@ucl.ac.uk, JP Martinez-Barbera, j.martinez-barbera@ucl.ac.uk. +44 (0) 207 905 2821

SUPPL. FIGURE 1

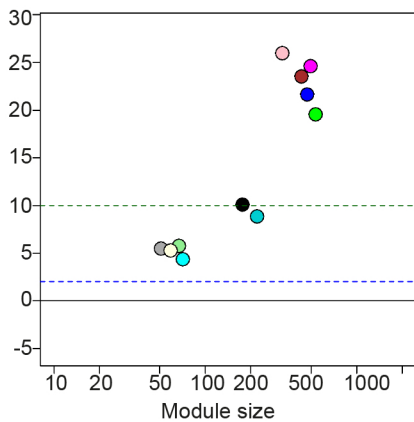
a



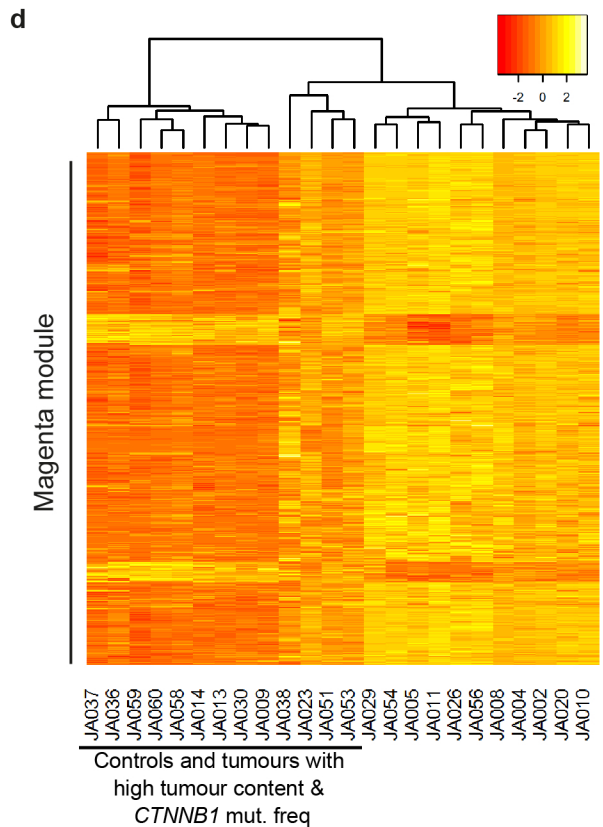
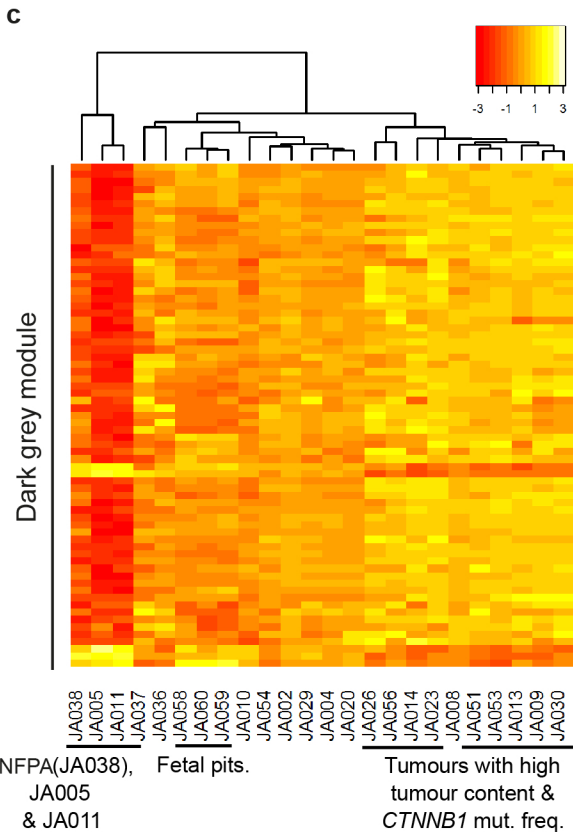
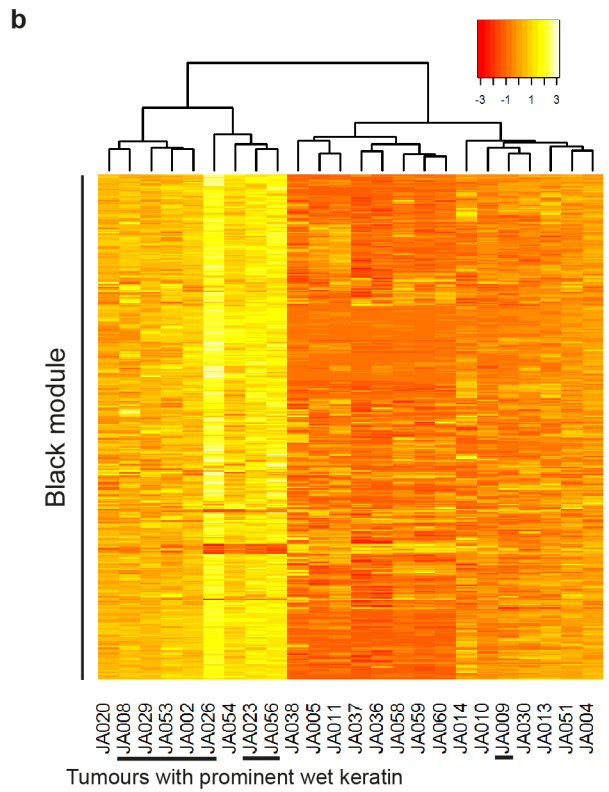
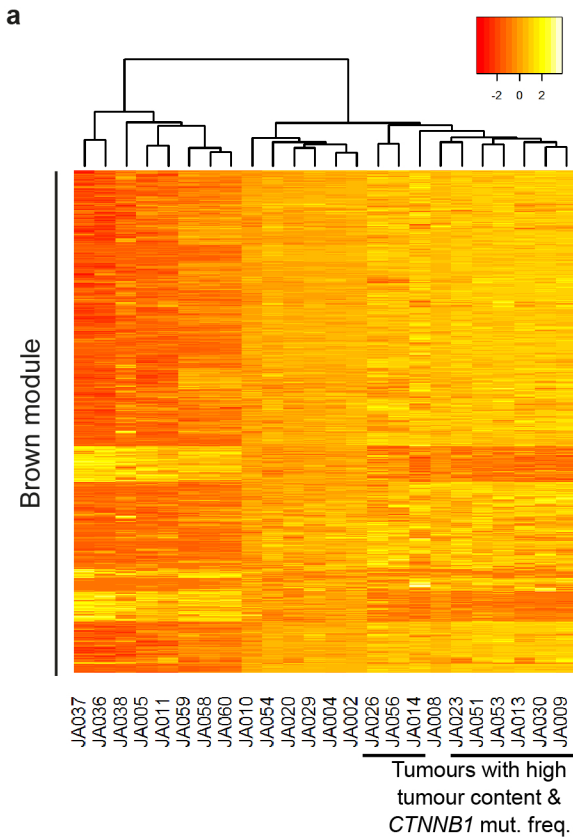
b



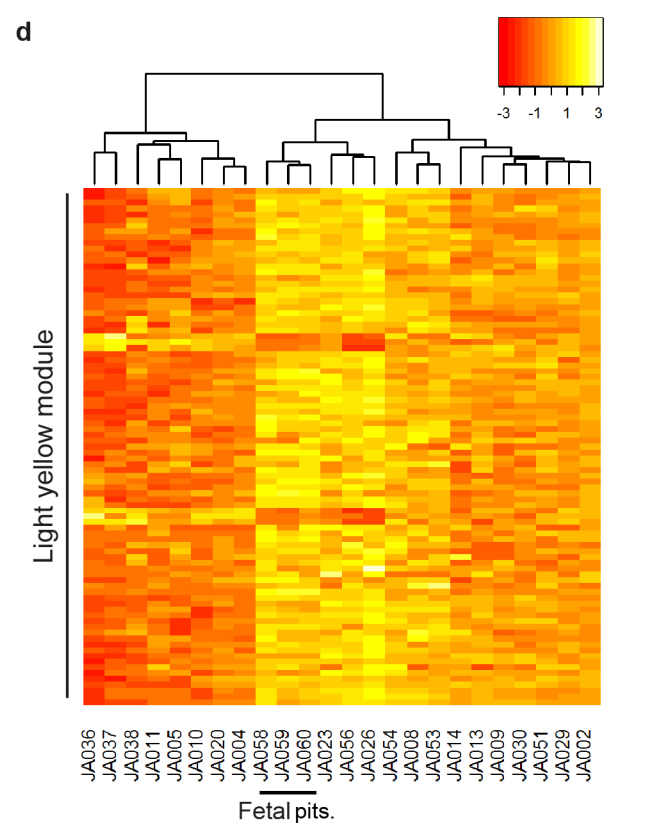
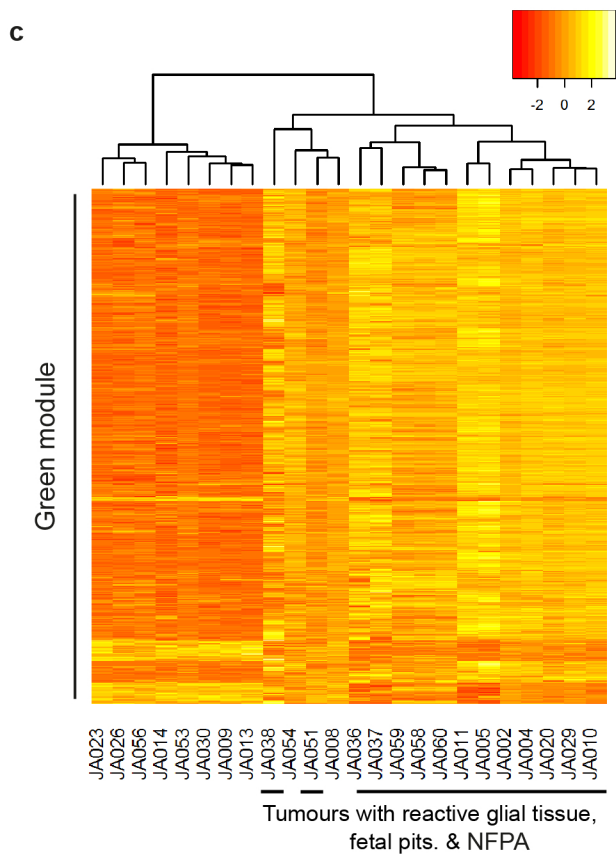
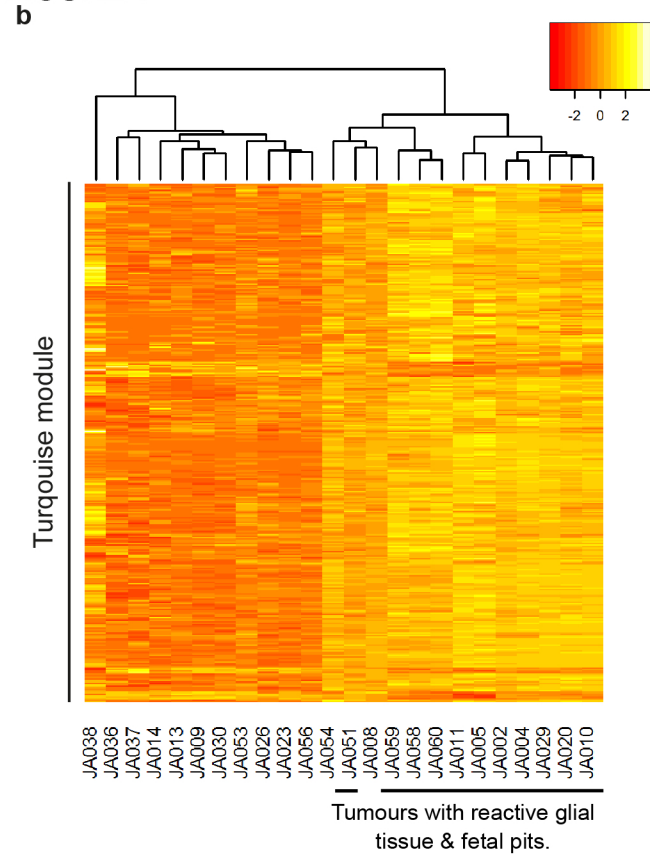
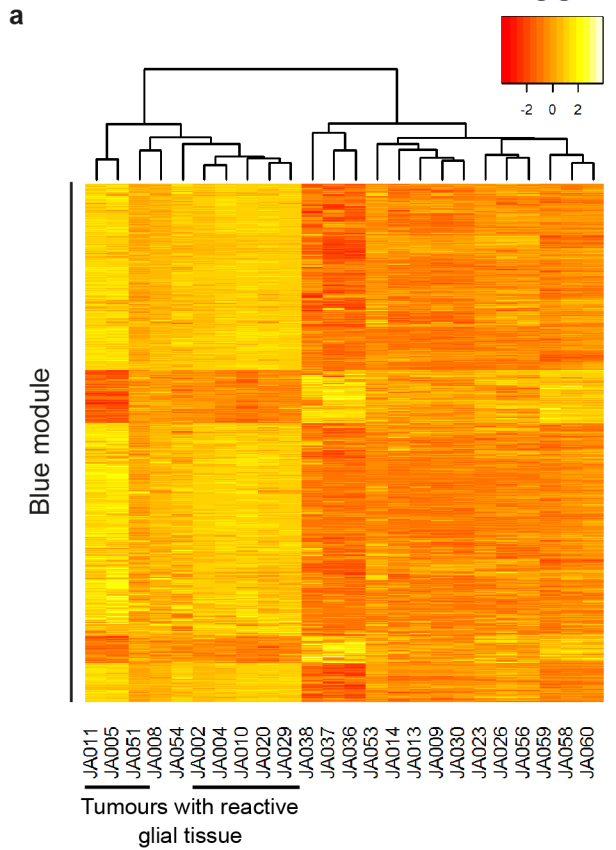
c



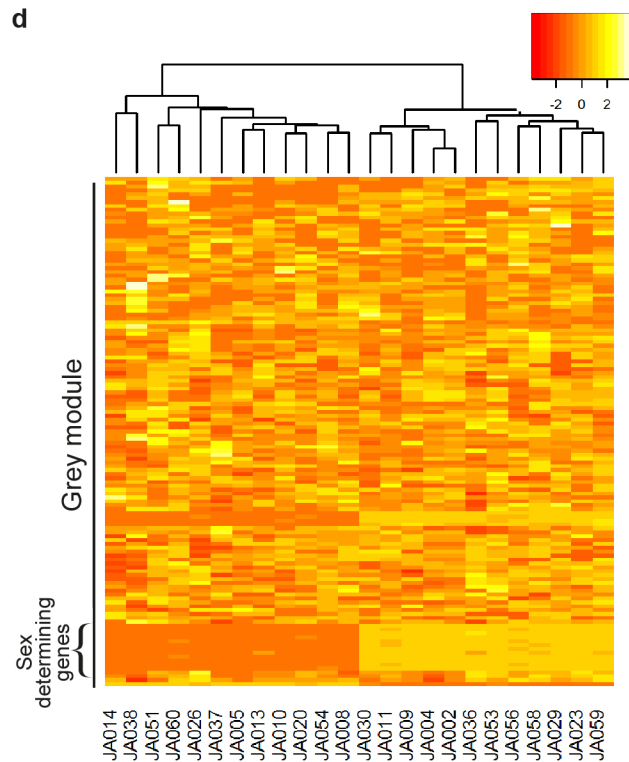
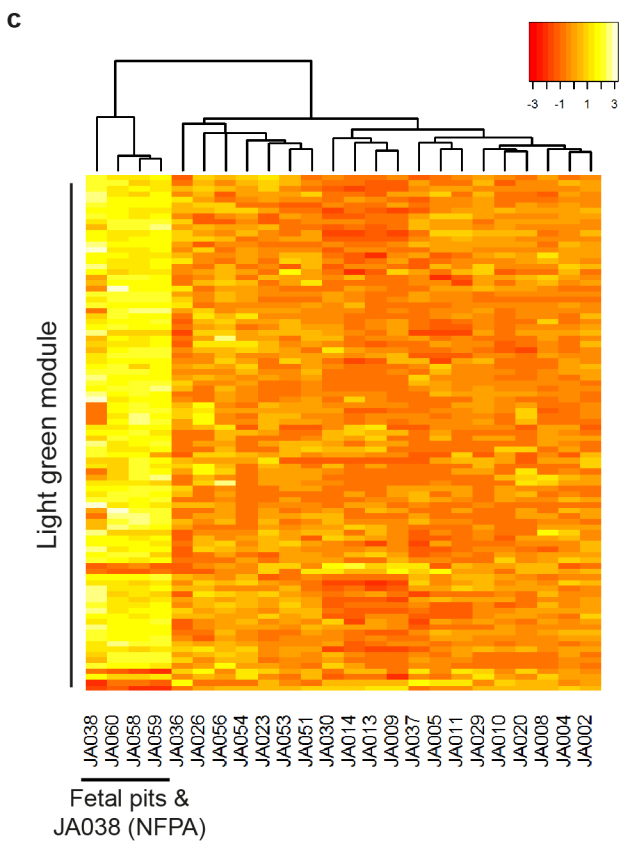
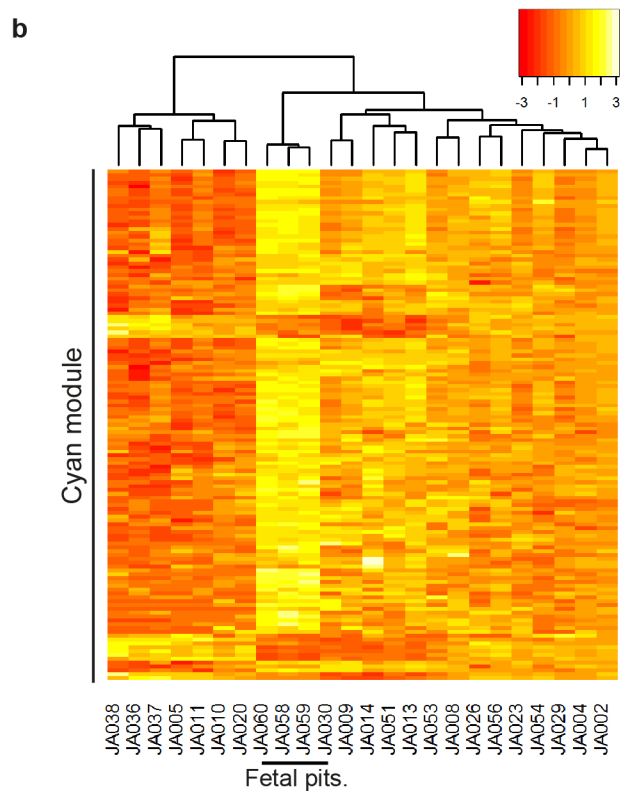
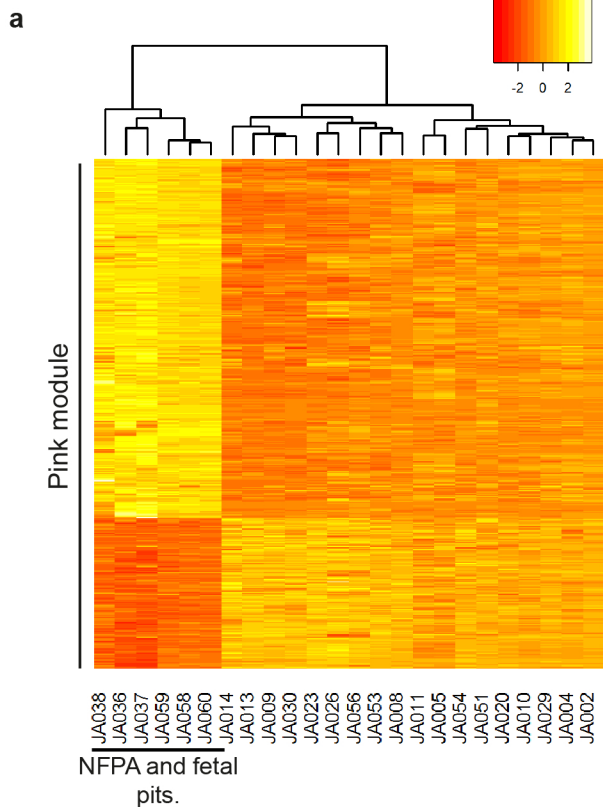
SUPPL. FIGURE 2



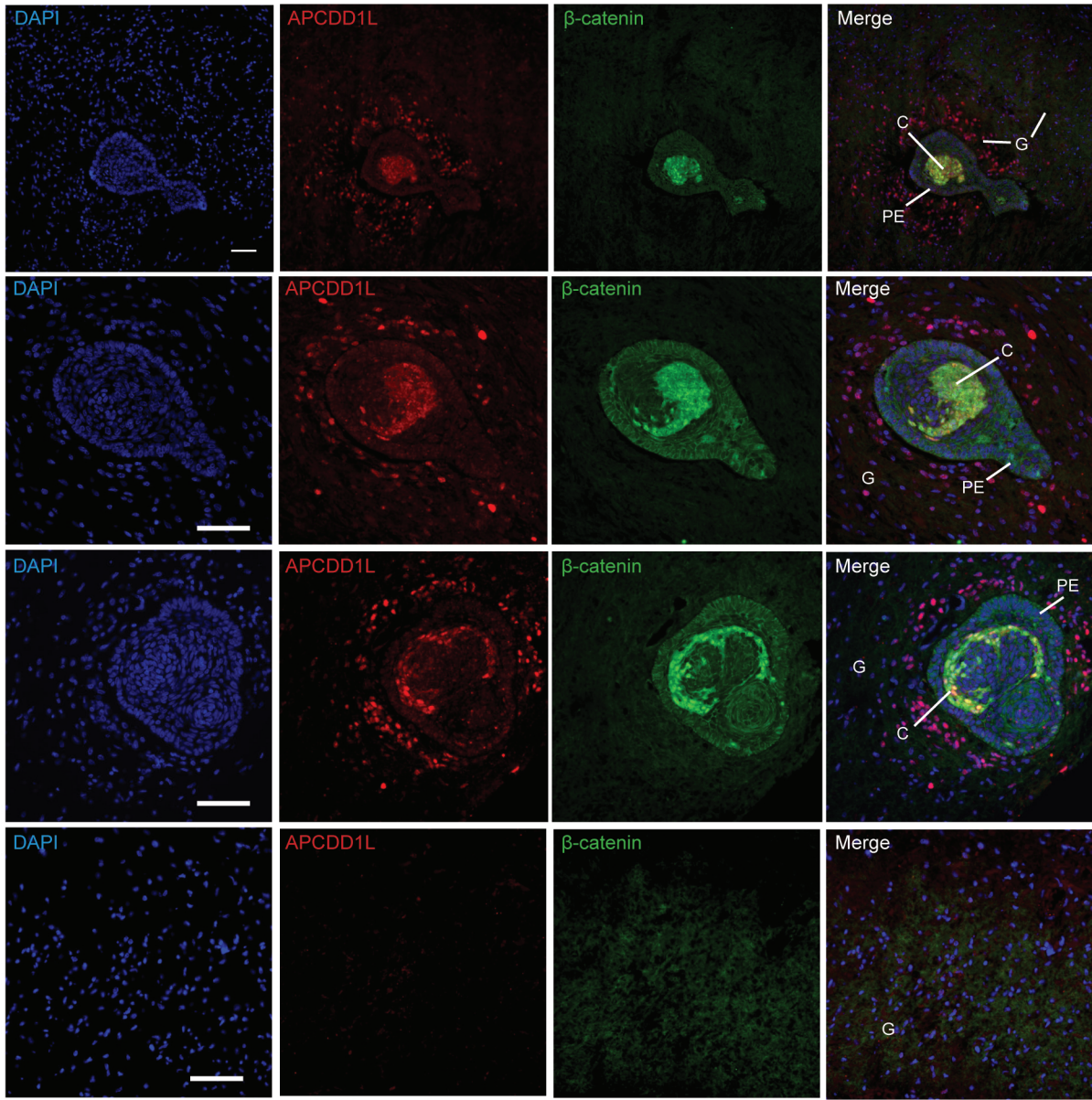
SUPPL. FIGURE 3



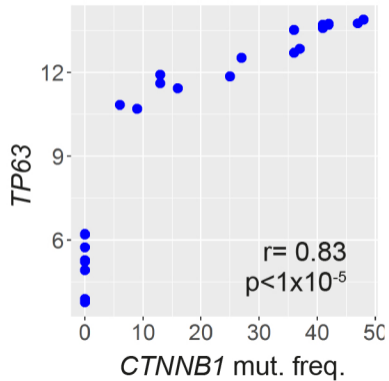
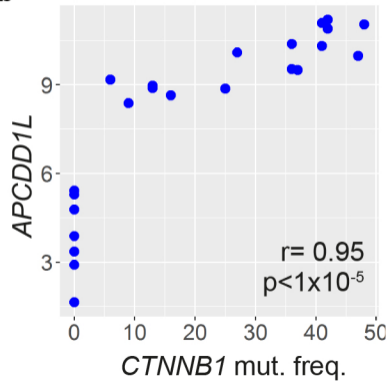
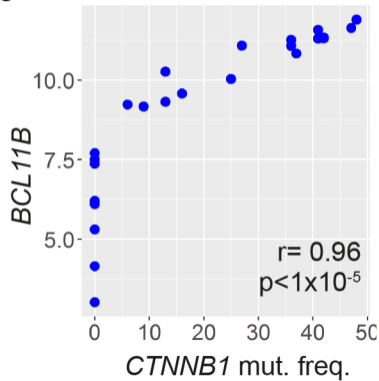
SUPL. FIGURE 4



SUPPL. FIGURE 5
Human ACPs

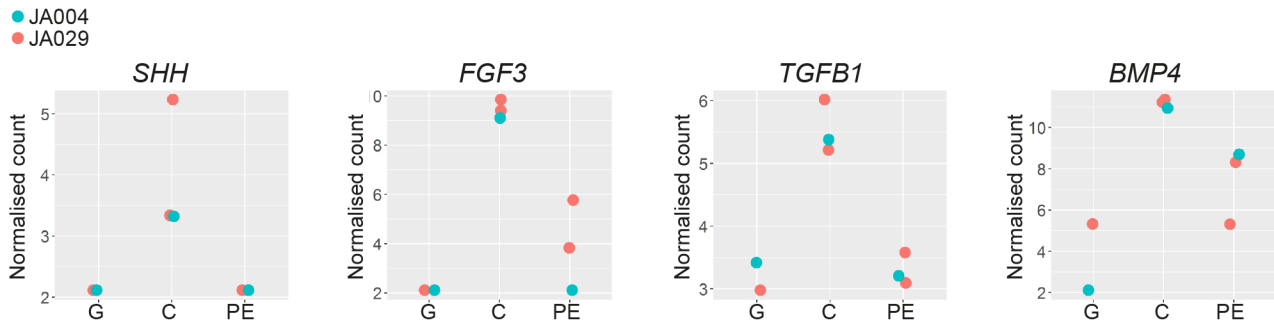


SUPPL. FIGURE 6

a**b****c**

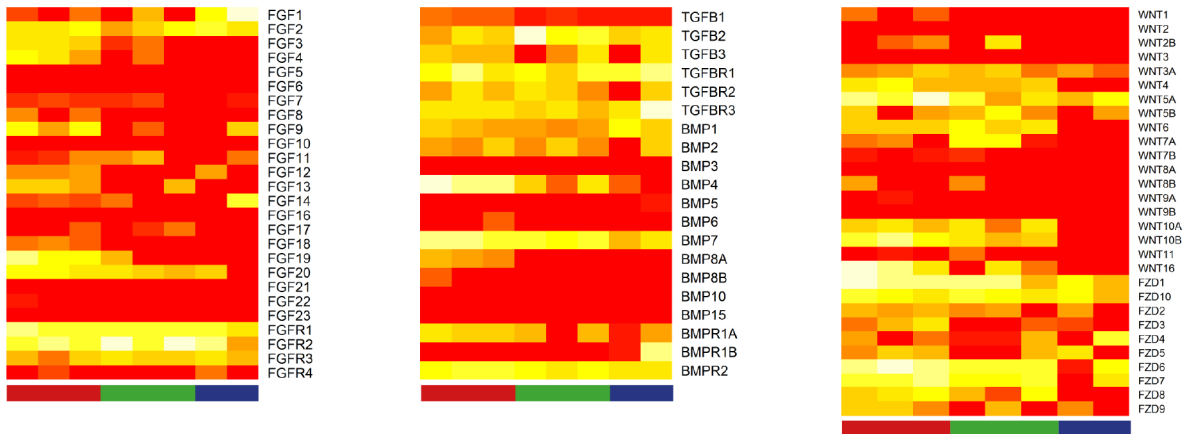
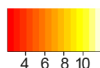
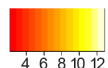
SUPPL. FIGURE 7

a



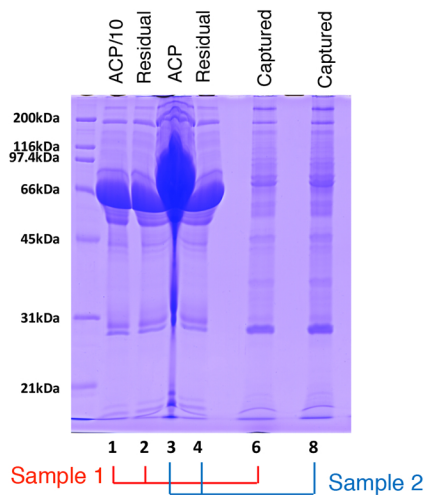
b

- Clusters
- Palisading epithelium
- Glial reactive tissue

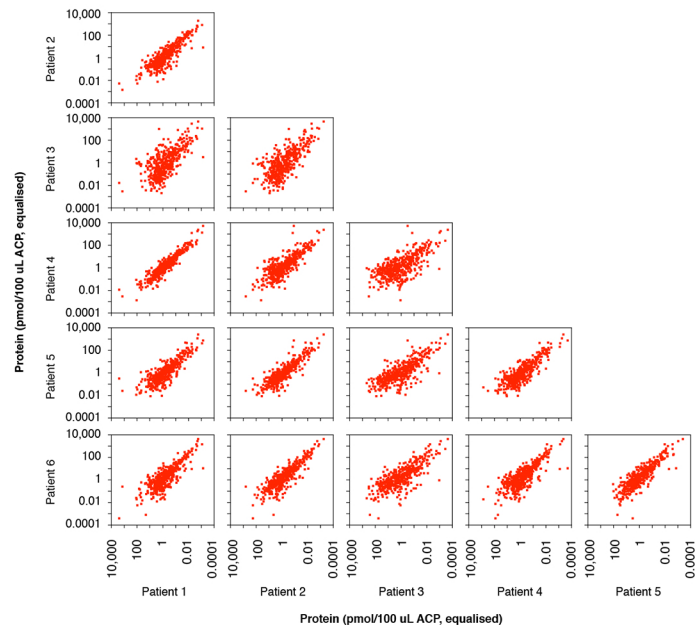


SUPPL. FIGURE 8

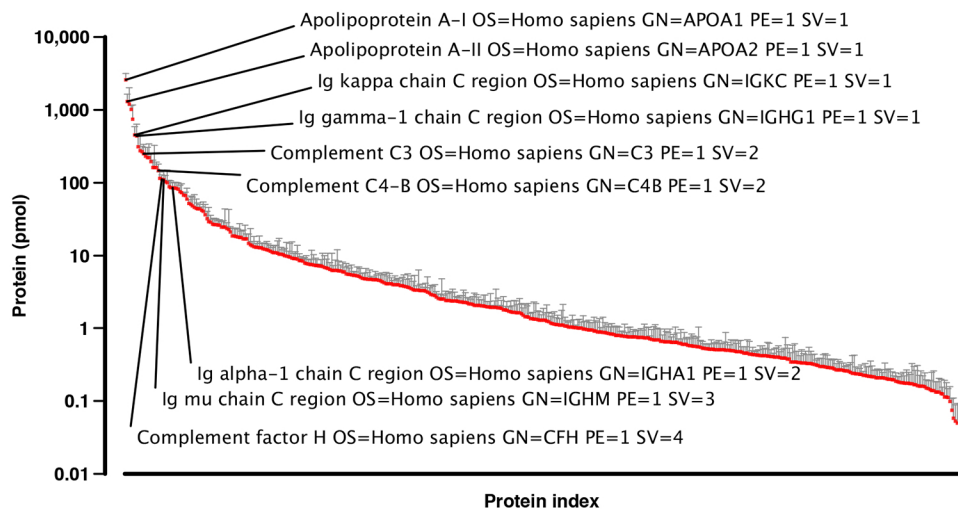
a



b



c



d

