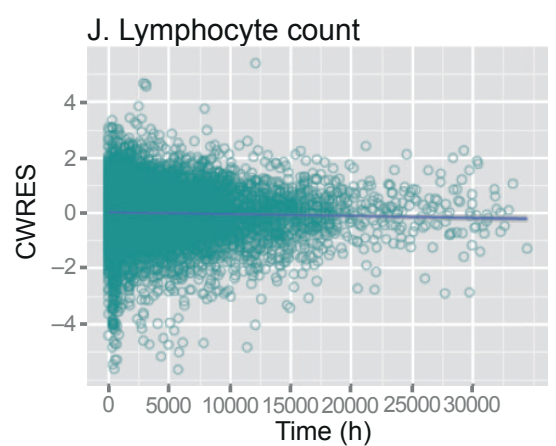
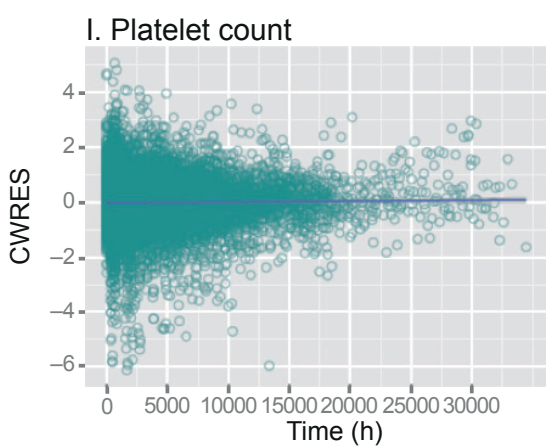
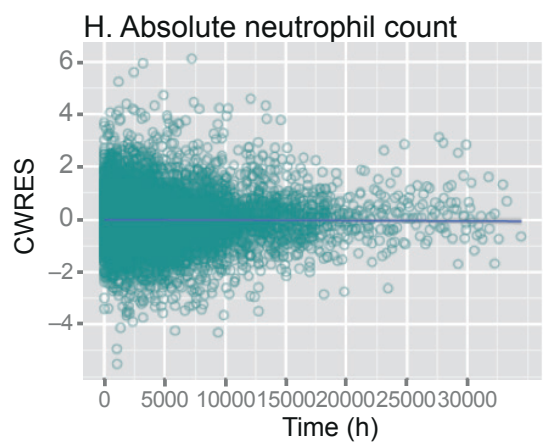
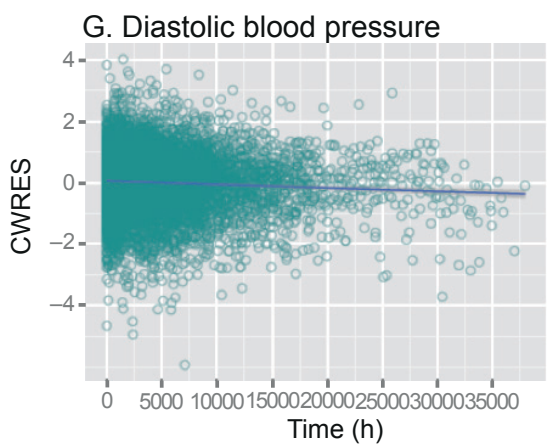
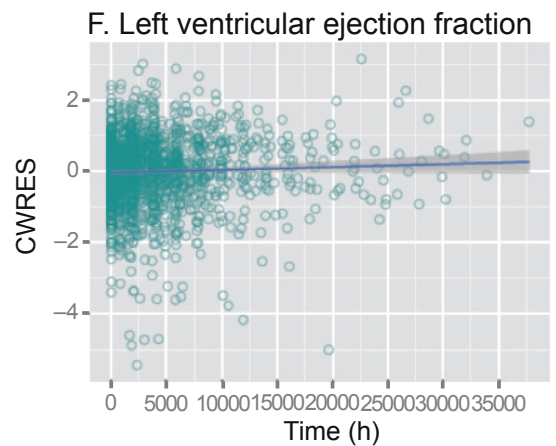
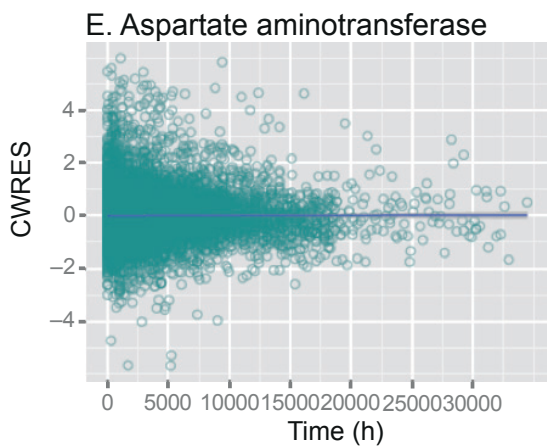
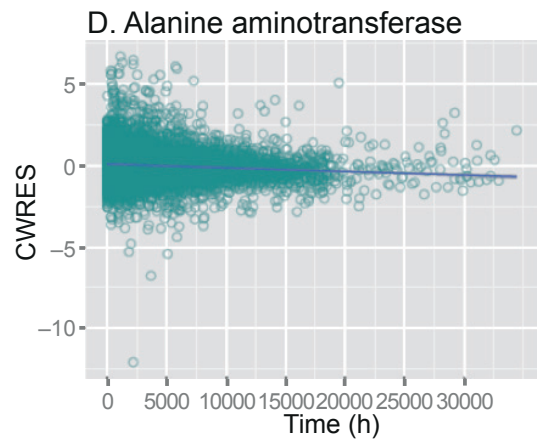
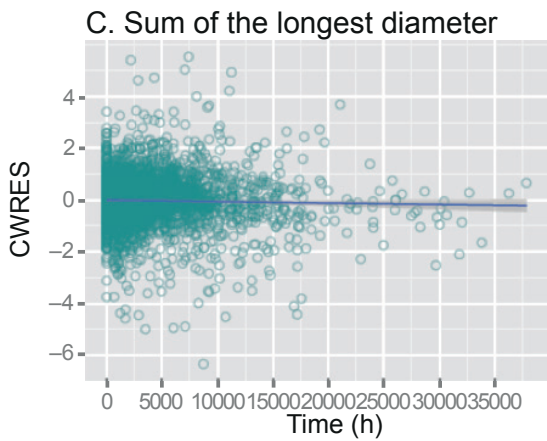
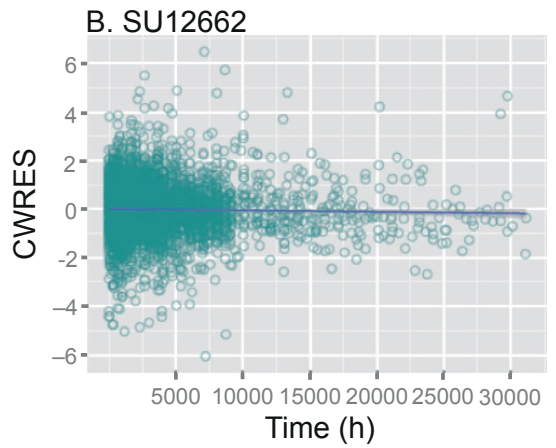
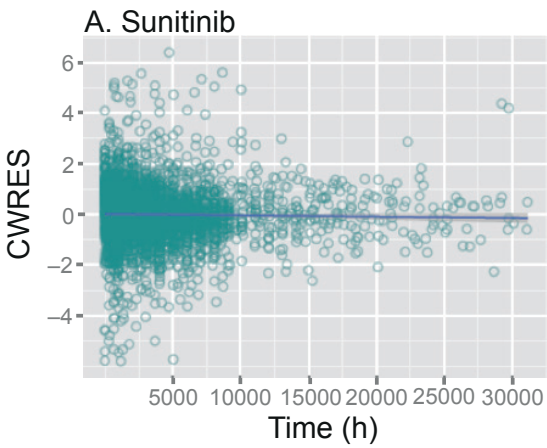
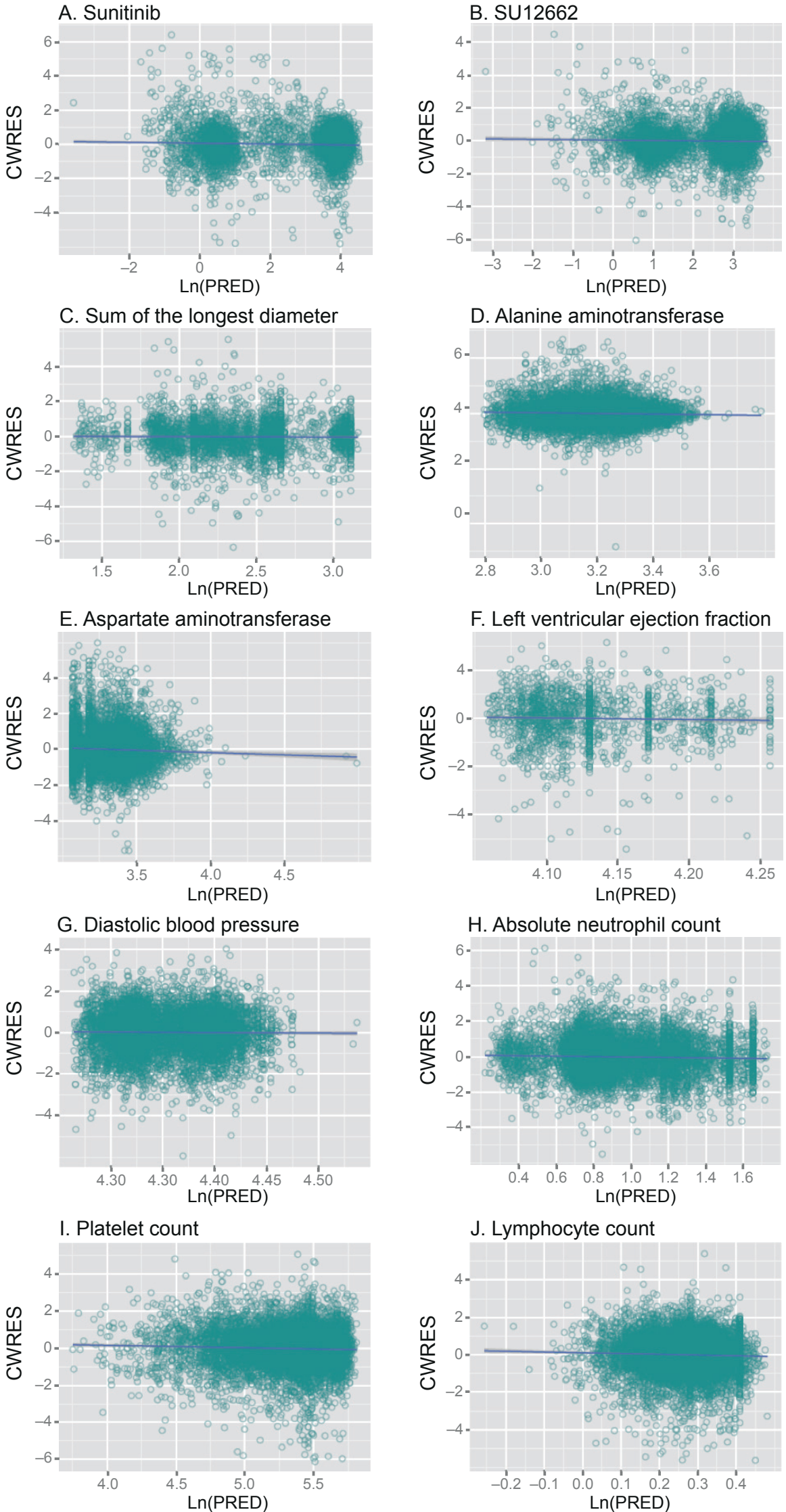


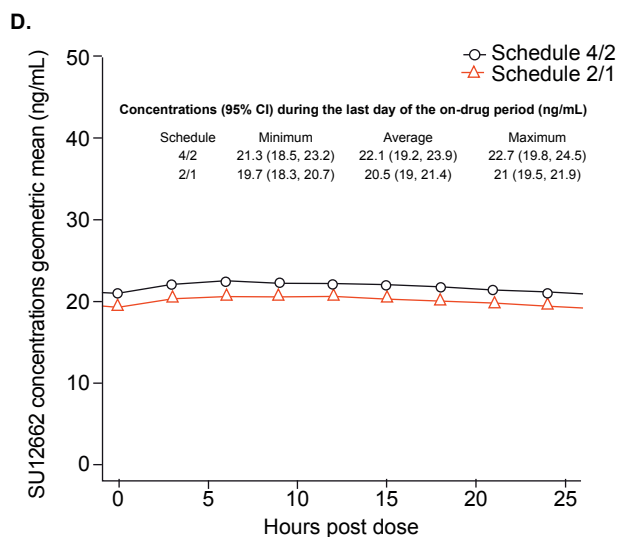
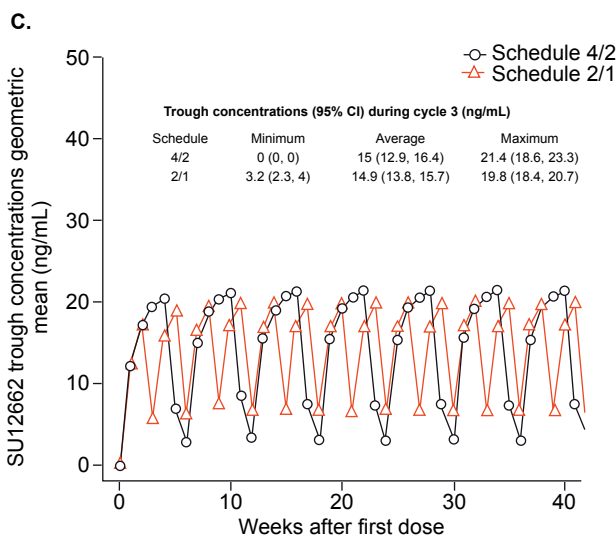
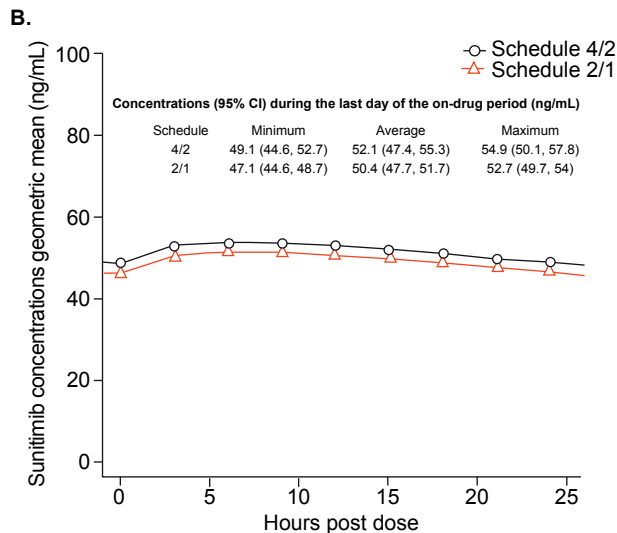
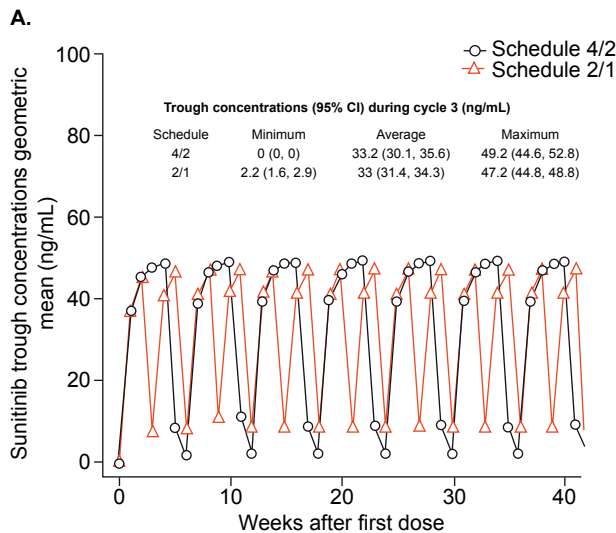
S1 Goodness-of-Fit Diagnostic Plots, Weighted Residuals vs Time (Final Model)



S2 Goodness-of-Fit Diagnostic Plots, Weighted Residuals vs Predicted (Final Model)



S3 Trial simulations predicted mean PK profiles and median (95% CI) PK parameters during (A, C) cycle 3, following weekly trough PK assessments, and (B, D) the last day of the on-drug period, following PK assessments every 3 h, for sunitinib and SU12662 in GIST patients receiving sunitinib 50 mg/day on Schedule 4/2 or Schedule 2/1.

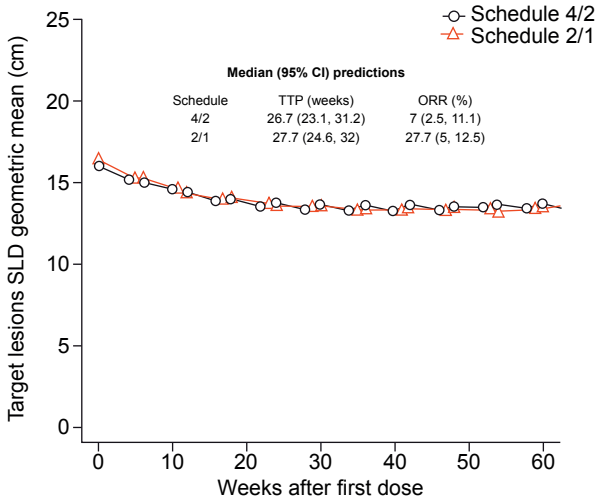


Schedule 4/2: 4-weeks-on followed by 2-weeks-off treatment; Schedule 2/1: 2-weeks-on followed by 1-week-off treatment.

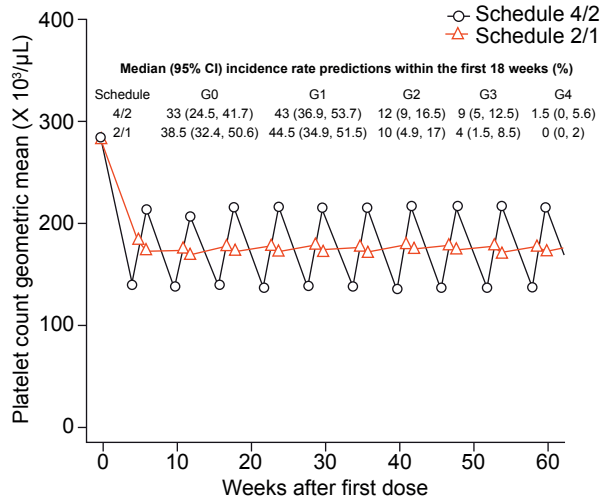
CI = confidence interval; GIST = gastrointestinal stromal tumor; PK = pharmacokinetics.

S4 Trial simulations predicted mean profiles and median (95% CI) values for (A) efficacy and (B–H) safety endpoints in GIST patients receiving sunitinib 50 mg/day on Schedule 4/2 or Schedule 2/1, with corresponding predictions for TTP and ORR and AE incident rates, following assessments made twice every 6 weeks

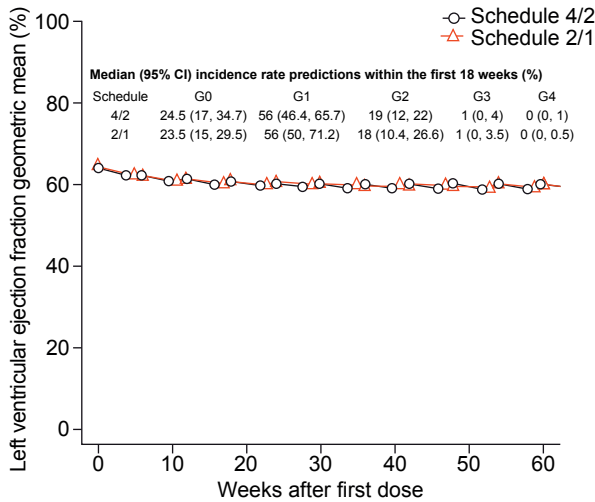
A. Sum of longest diameter (SLD)



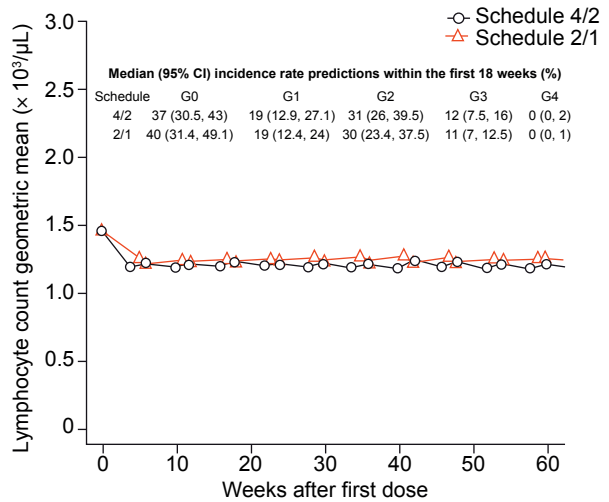
B. Platelet count



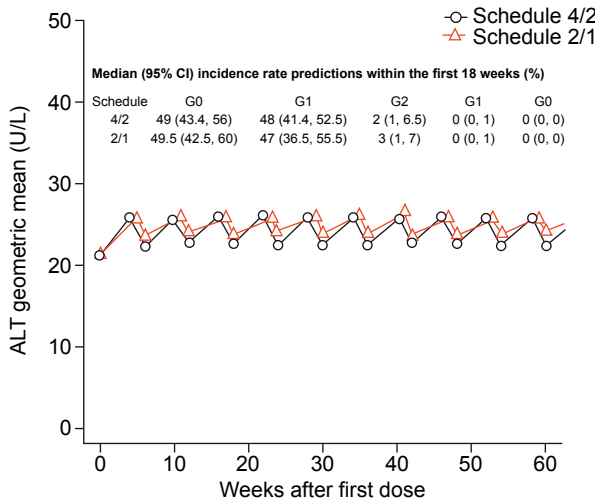
C. Left ventricular ejection fraction



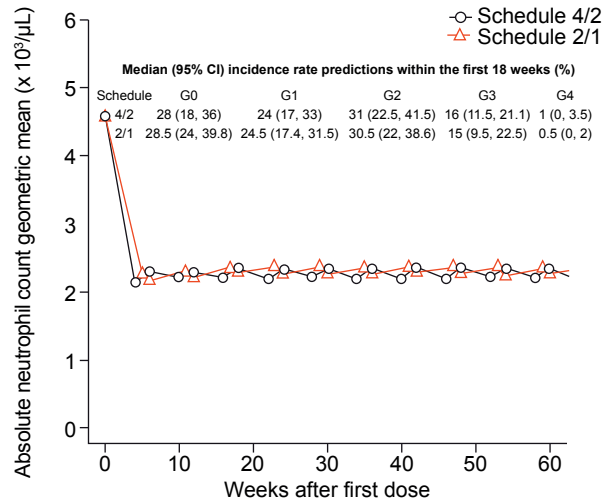
D. Absolute lymphocyte count



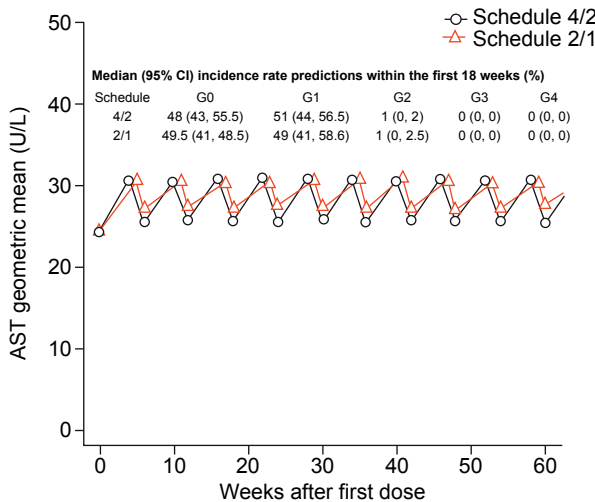
E. Alanine aminotransferase (ALT)



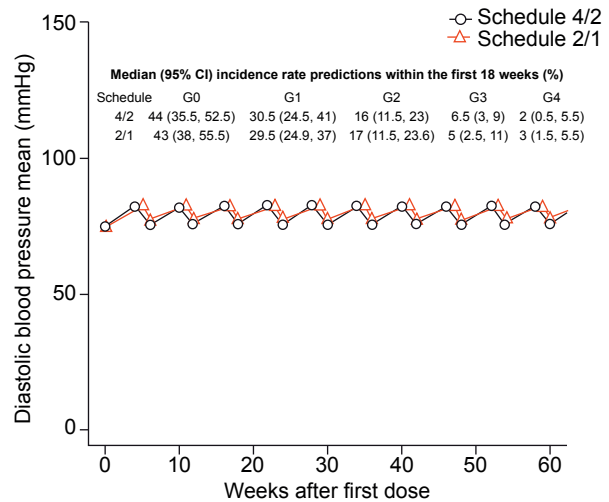
F. Absolute neutrophil count



G. Aspartate aminotransferase (AST)



H. Diastolic blood pressure



Schedule 4/2: 4-weeks-on followed by 2-weeks-off treatment; Schedule 2/1: 2-weeks-on followed by 1-week-off treatment.
 AE = adverse event; CI = confidence interval; G = grade of AE intensity; GIST = gastrointestinal stromal tumor;
 ORR = objective response rate; TTP = time to progression.