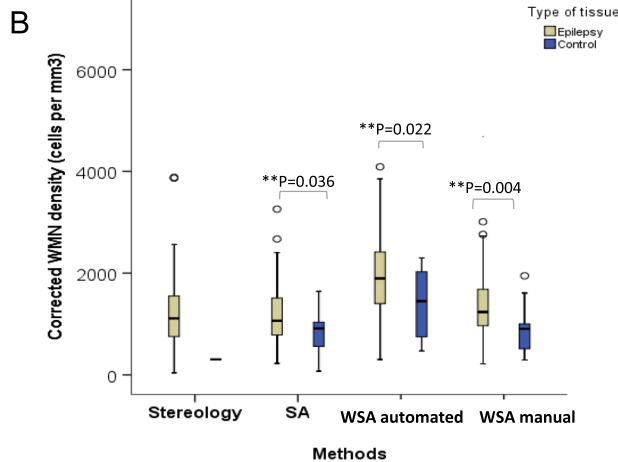


Methods	n	Cells per mm ²		Cells per mm ³	
		Average ± SE	Max - Min	Average ± SE	Max - Min
Stereology	50	15 ± 3	42 - 1	1206 ± 117	3882 - 38
SA	142	39 ± 2	132 - 3	1150 ± 49	4358 - 73
WSA automated	142	65 ± 2	153 - 9	1941 ± 68	6003 - 301
WSA manual	142	44 ± 2	118 - 5	1322 ± 53	4615 - 215



Methods	n	Cells per mm ²		Cells per mm ³	
		Average ± SE	Max - Min	Average ± SE	Max - Min
Stereology					
Control	1	10	10	303	303
Epilepsy	49	15 ± 3	42 - 1	1224 ± 118	3882 - 39 [^]
SA					
Control (all)	12	28 ± 4	63 - 3	831 ± 119	1639 - 73
Surgical	7	34	63 - 17	1009	1639 - 568
PM	5	19	31 - 3	583	929 - 73
Epilepsy	130	40 ± 2	132 - 5	1180 ± 51	4358 - 225
WSA automated					
Control (all)	12	47 ± 7	84 - 14	1399 ± 194	2298 - 467
Surgical	7	52	84 - 14	1561	2298 - 467
PM	5	40	62 - 16	1173	2009 - 481
Epilepsy	130	66 ± 2	153 - 9	1991 ± 71	6003 - 301
WSA manual					
Control (all)	12	30 ± 6	74 - 9	883 ± 143	1947 - 291
Surgical	7	34	74 - 9	998	1947 - 291
PM	5	25	40 - 11	722	1026 - 299
Epilepsy	130	46 ± 2	118 - 5	1362 ± 55	4615 - 215