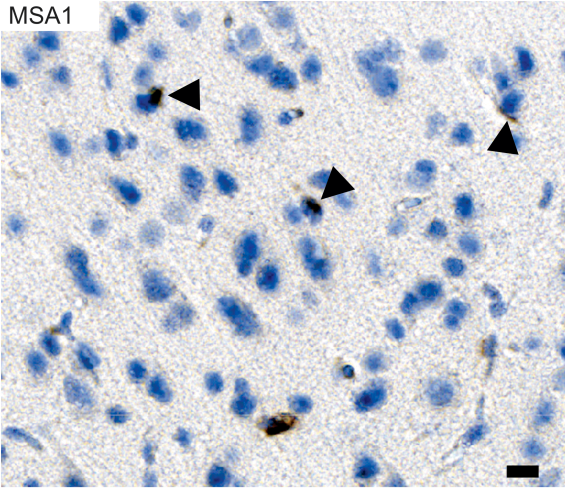


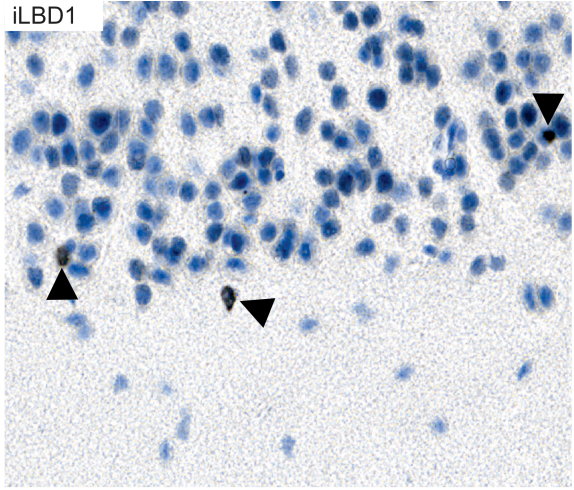
**Additional file 3** Accumulation of inclusion bodies in Tg(SNCA)<sup>1Nbm</sup>/J mice injected with brain extracts from MSA or probable iLBD cases

DAB-staining with the pSyn#64 antibody for phosphorylated alpha-synuclein in brain sections of Tg(SNCA)<sup>1Nbm</sup>/J mice injected with brain extracts from MSA or probable iLBD cases shows at 9 months post injection punctate aggregates of phosphorylated alpha-synuclein (arrow heads). Brain sections from mice injected with PBS did not show any staining for phosphorylated alpha-synuclein. Sections were counterstained with hematoxylin. Scale bar = 10  $\mu$ m.

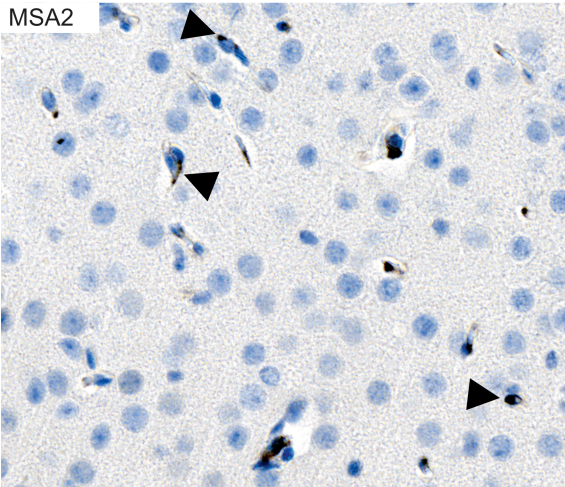
MSA1



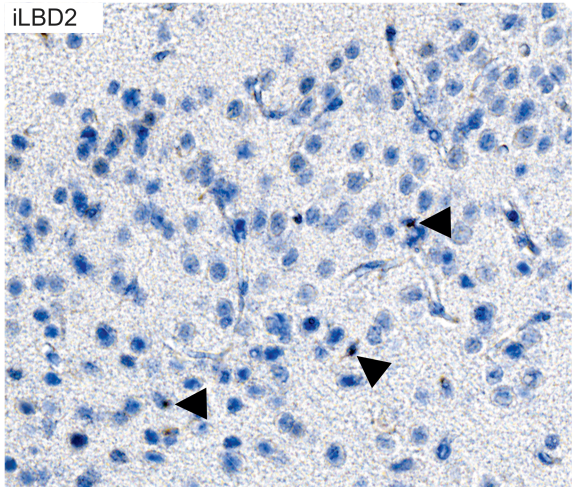
iLBD1



MSA2



iLBD2



PBS

