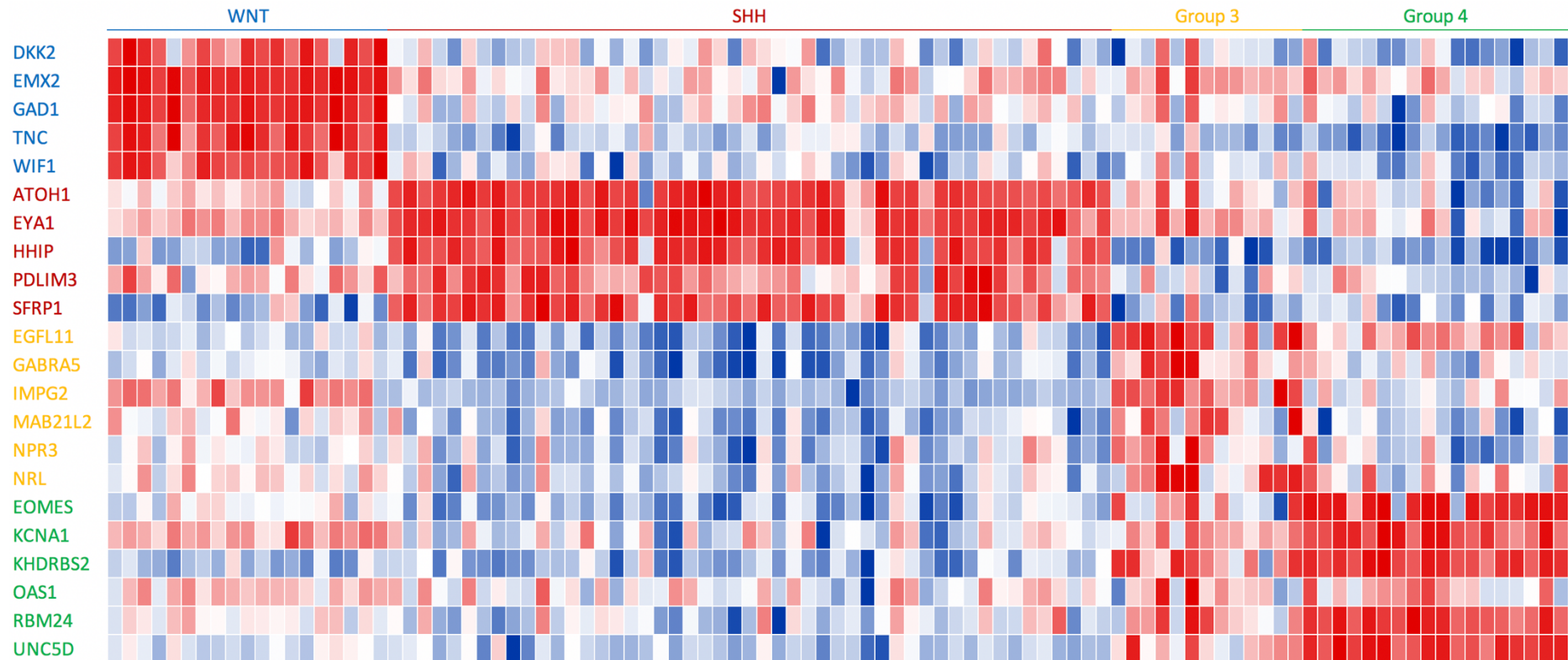
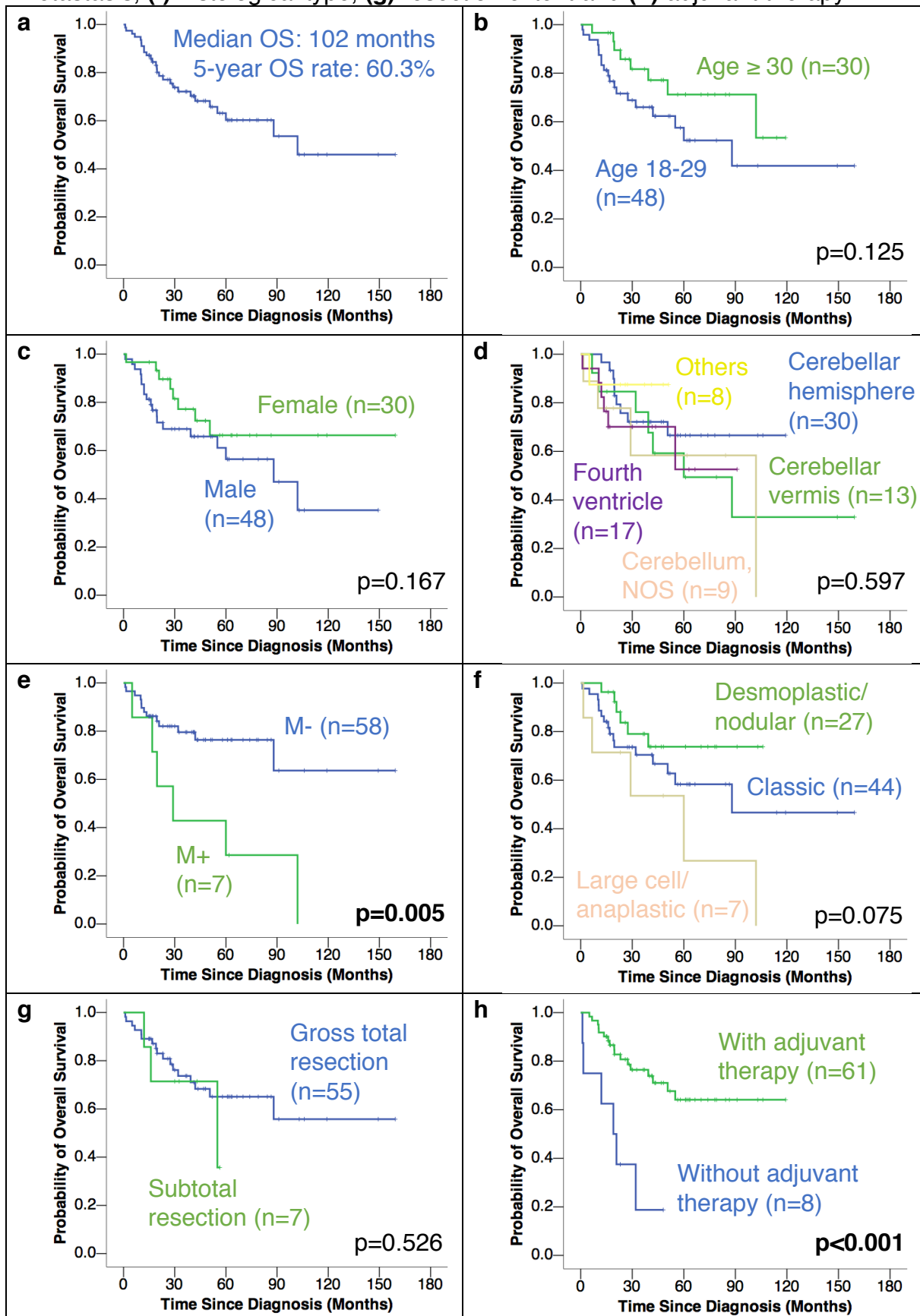


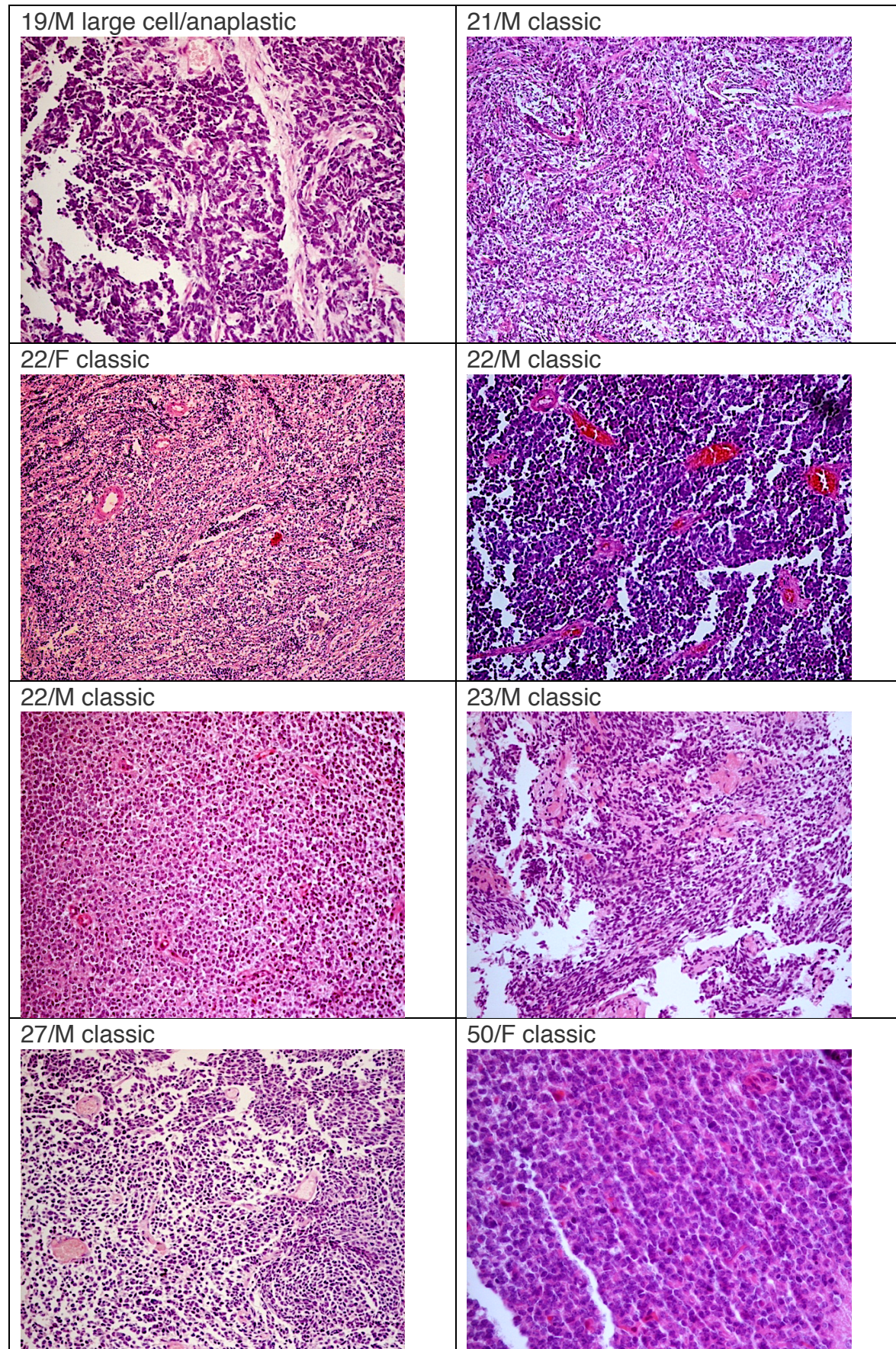
Supplementary Figure 1. Expression heatmap of 22 medulloblastoma group-specific genes in the NanoString CodeSet across a cohort of 99 adult medulloblastomas



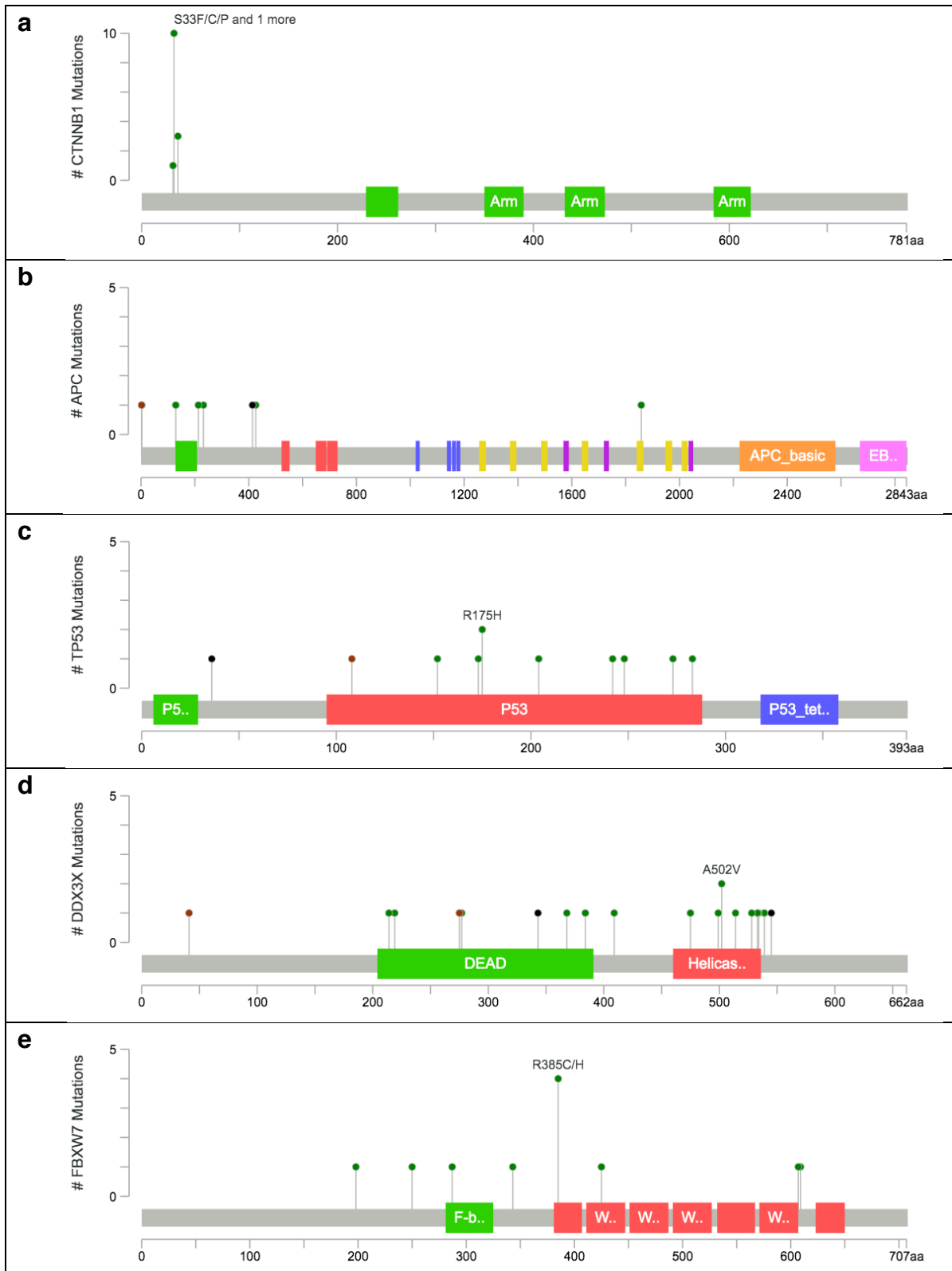
Supplementary Figure 2. Kaplan-Meier survival curves (OS) of adult medulloblastoma patients **(a)**, stratified by **(b)** age group, **(c)** sex, **(d)** location, **(e)** metastasis, **(f)** histological type, **(g)** resection extent and **(h)** adjuvant therapy



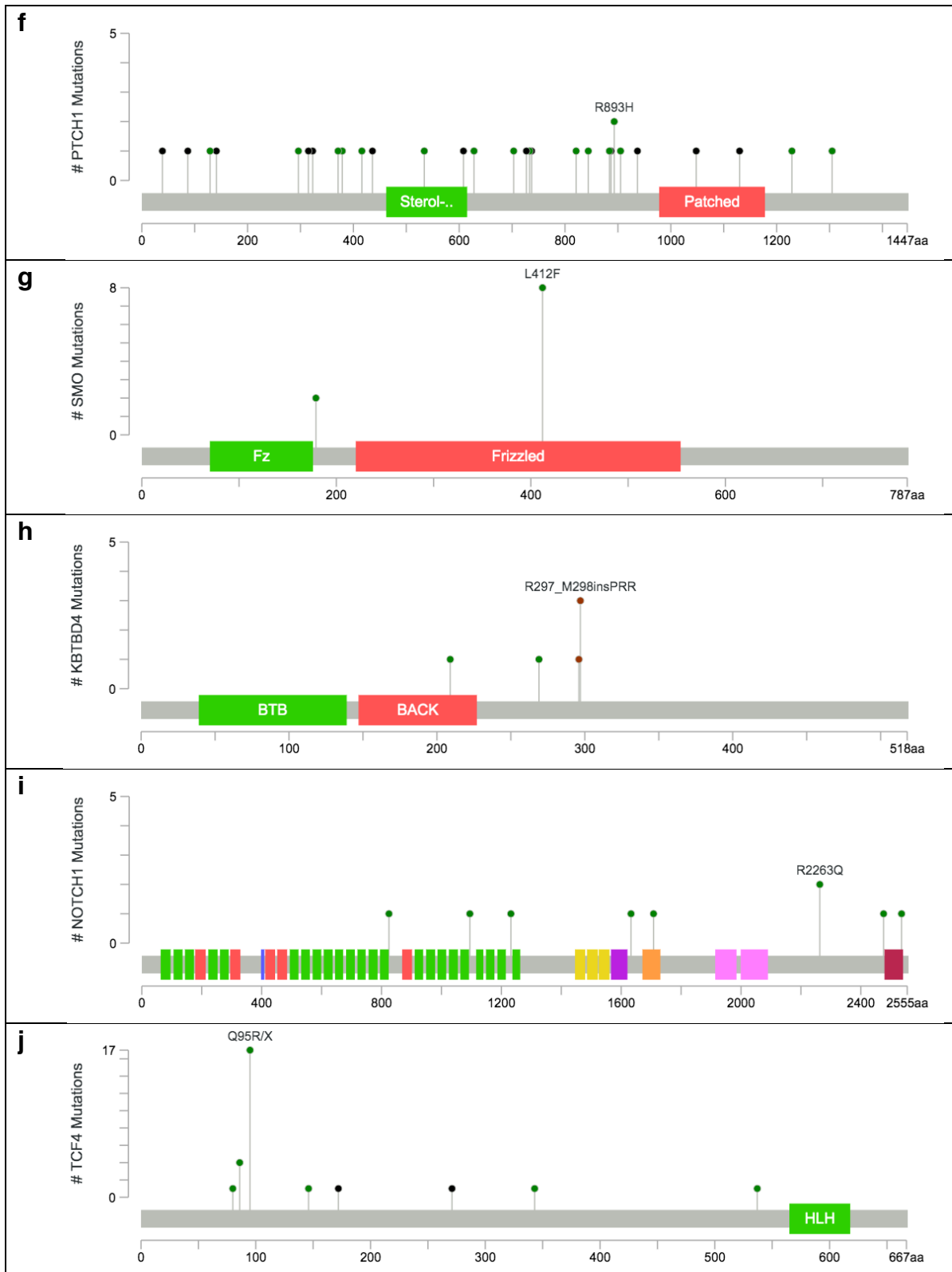
Supplementary Figure 3. H&E photomicrographs of adult Group 3 medulloblastomas



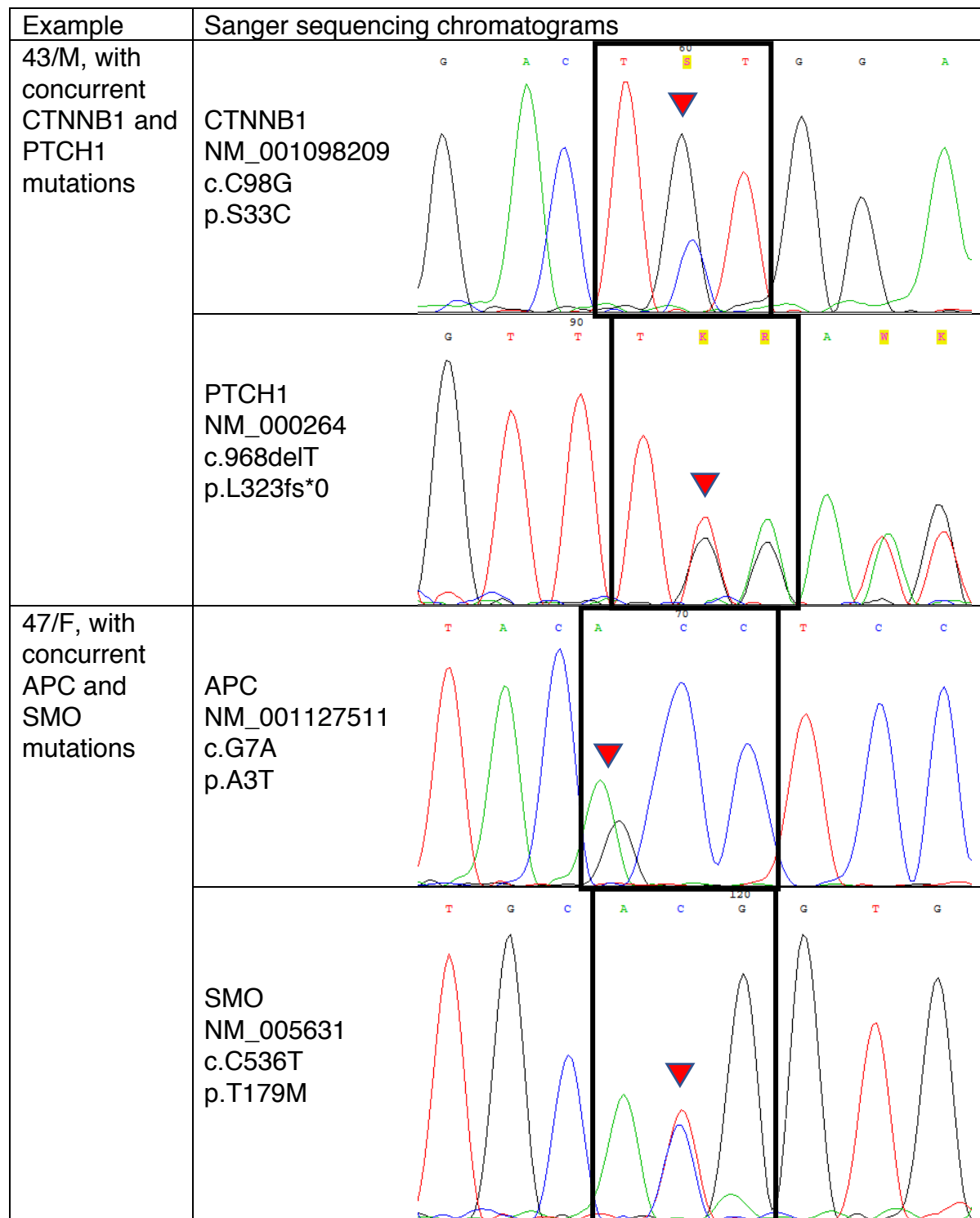
Supplementary Figure 4. Gene-level summary plots of mutations in (a) CTNNB1, (b) APC, (c) TP53, (d) DDX3X, (e) FBXW7, (f) PTCH1, (g) SMO, (h) KBTBD4, (i) NOTCH1 and (j) TCF4. Green, missense mutations; Brown: in-frame mutations; Black: truncating mutations



Supplementary Figure 4 (continued). Gene-level summary plots of mutations in **(a)** CTNNB1, **(b)** APC, **(c)** TP53, **(d)** DDX3X, **(e)** FBXW7, **(f)** PTCH1, **(g)** SMO, **(h)** KBTBD4, **(i)** NOTCH1 and **(j)** TCF4. Green, missense mutations; Brown: in-frame mutations; Black: truncating mutations



Supplementary Figure 5. Sanger sequencing chromatograms showing concurrent WNT and SHH pathway gene mutations in adult WNT medulloblastomas



Supplementary Figure 7. Oncoprint summary showing mutations in genes related to chromatin modification

