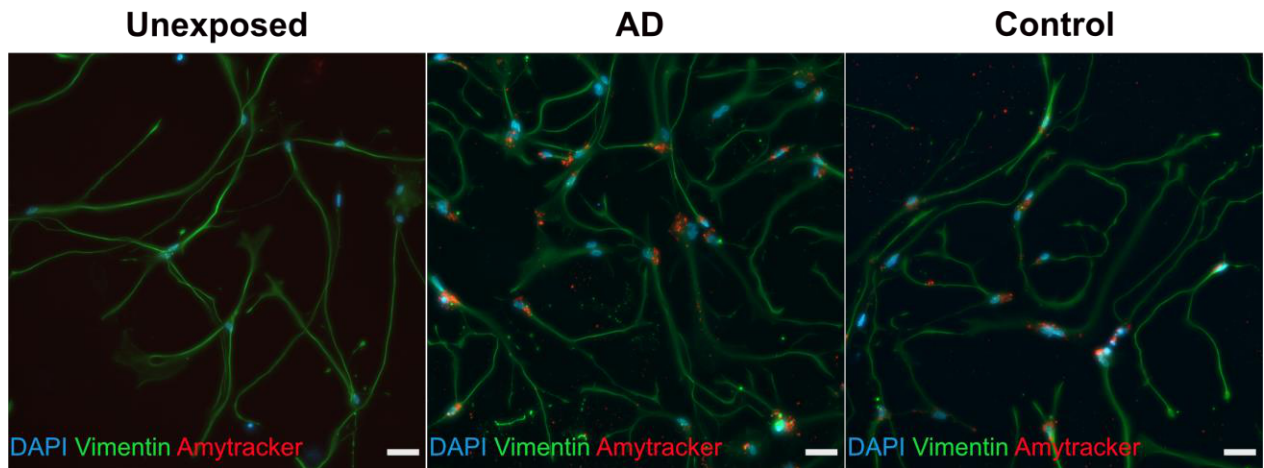
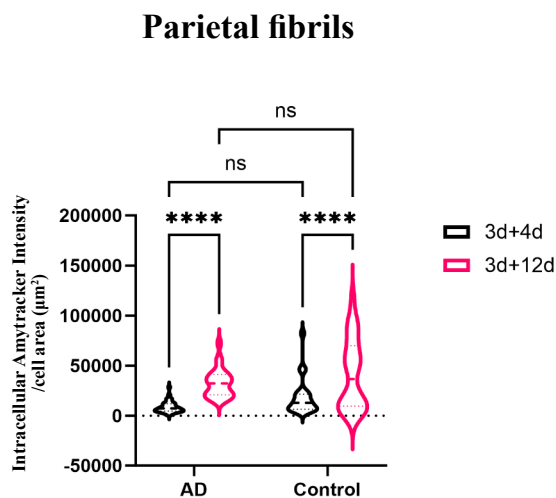
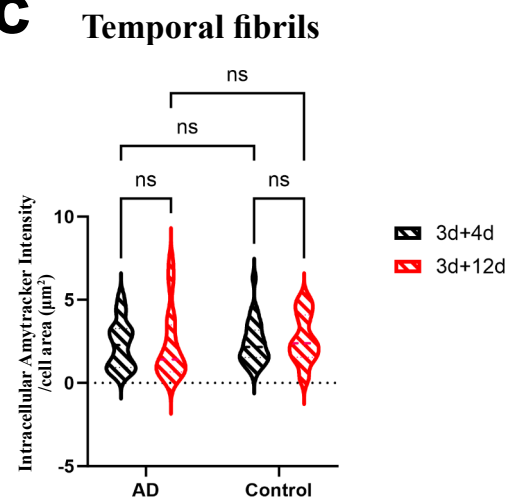


a**b****c**

Online Resource 8 (a) Fluorescent images of Amytracker-stained astrocyte cultures demonstrating uptake of brain-derived AD and control tau fibrils by human astrocytes. No Amytracker signal was detected in unexposed astrocytes, excluding any endogenous formation of tau fibrils. Scale bar= 50 µm. **(b)** Quantification of intracellular Amytracker-680 signal in astrocytes exposed to parietal tau fibrils. **(c)** Quantification of intracellular Amytracker-680 signal in astrocytes exposed to temporal tau fibrils. Three AD and two control samples were used. N= 3 culture experiments, n= 10-12 non-overlapping fields per brain sample. Signal intensities in **b** and **c** were normalized to cell area (µm²). The level of significance was set at *p ≤ 0.05, **p ≤ 0.001, ***p ≤ 0.0001, ****p ≤ 0.00001