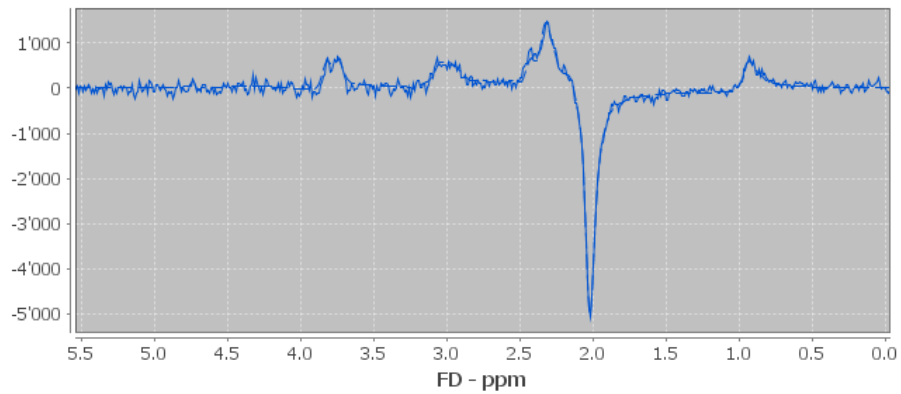


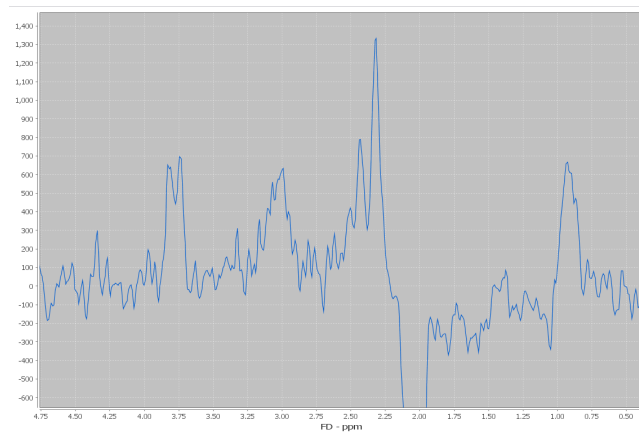
## Appendix

### 1. MRS examples

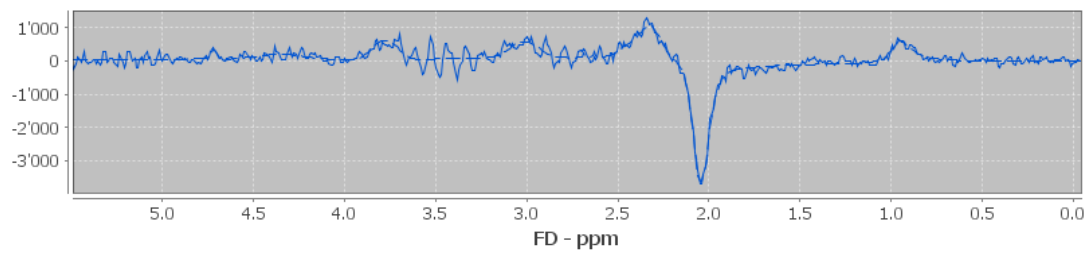
#### 1.1 Example for good quality of the spectrum, made with spectrlm-QMRS.



#### Enlarged view of a good quality spectrum, made with spectrlm-QMRS.

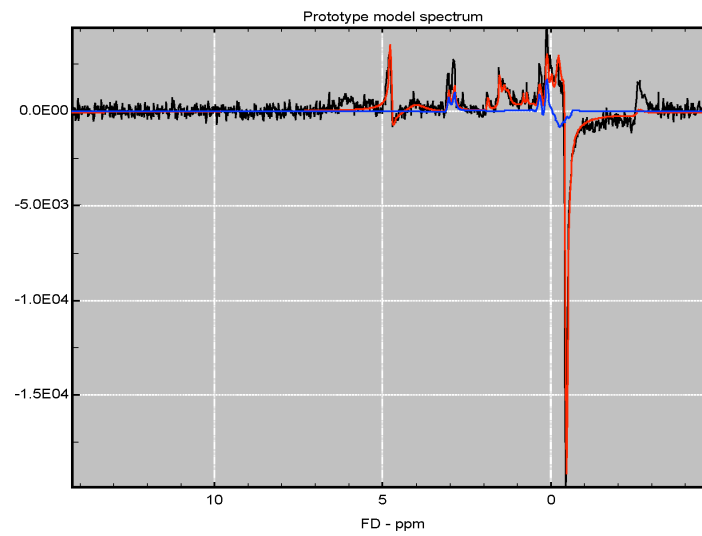


#### 1.2 Example for bad quality of the spectrum that lead to the exclusion of the subject, made with spectrlm-QMRS.



## 2. Glx model fitting

### 2.1 Model fit of glutamate (blue, made with spectrIm-QMRS.)



### 2.2 Model fit of glutamine (blue, made with spectrIm-QMRS.)

