

Ocrelizumab exposure in relapsing–remitting multiple sclerosis: 10-year analysis of the phase 2 randomized clinical trial and its extension

Journal of Neurology

Authors: Ludwig Kappos, Anthony Traboulsee, David K.B. Li, Amit Bar-Or, Frederik Barkhof, Xavier Montalban, David Leppert, Anna Baldinotti, Hans-Martin Schneble, Harold Koendgen, Annette Sauter, Qing Wang, Stephen L. Hauser

Corresponding author:

Prof. Ludwig Kappos, MD

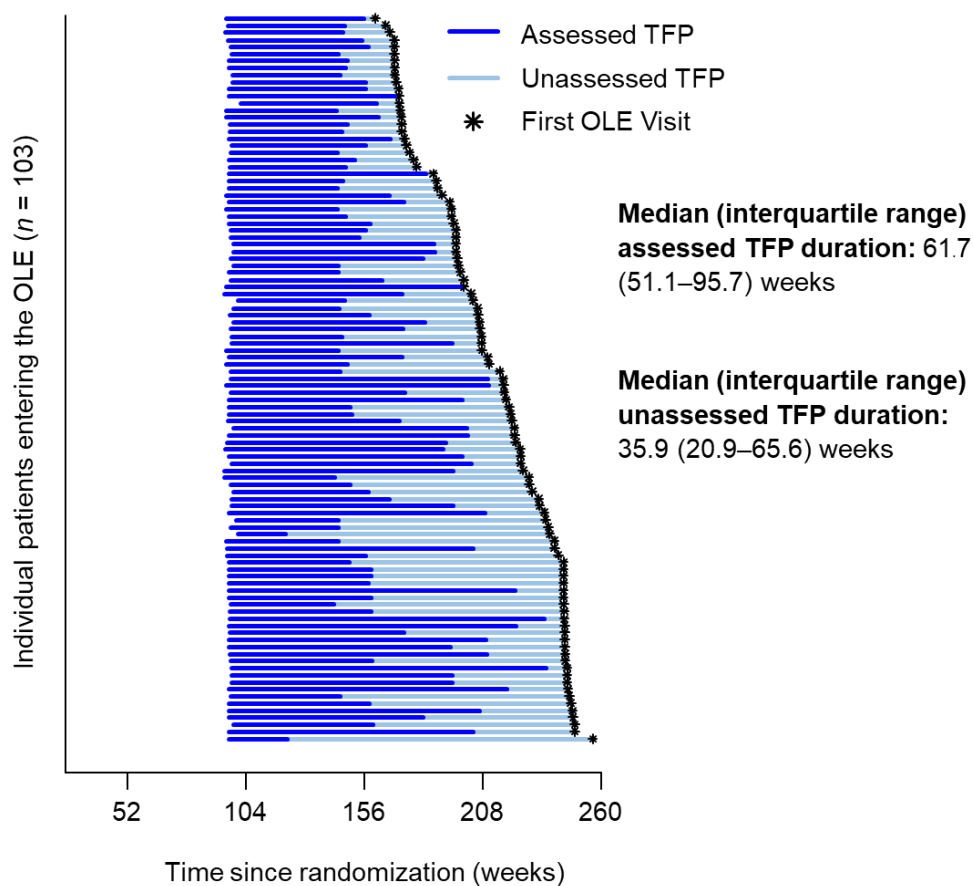
Research Center for Clinical Neuroimmunology and Neuroscience Basel (RC2NB)

Departments of Head, Spine and Neuromedicine, Clinical Research, Biomedicine and Clinical Research, University Hospital Basel

University of Basel, Basel

Switzerland

Email: ludwig.kappos@usb.ch



Supplementary Fig. 2 Duration of the study treatment-free period for each patient who entered the OLE to receive ocrelizumab 600 mg every 24 weeks ($n = 103$)

Assessed TFP assessed treatment-free period, *IQR* interquartile range, *OLE* open-label extension, *unassessed TFP* unassessed treatment-free period