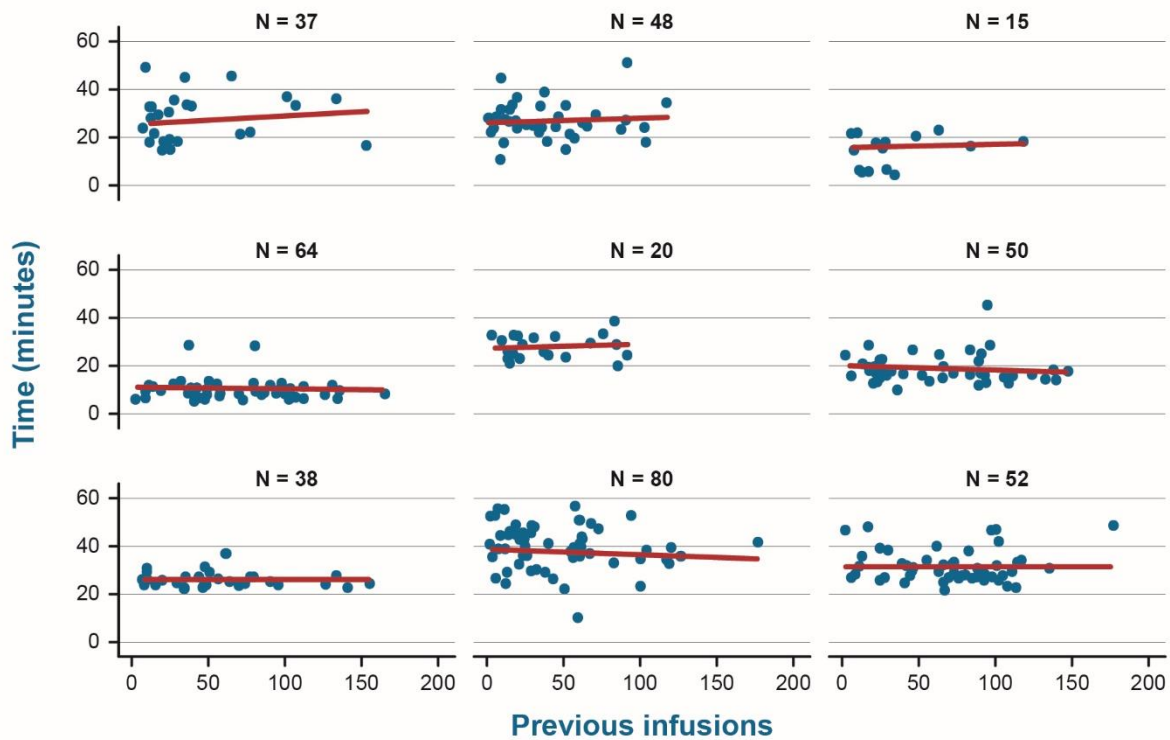


Intravenous or Subcutaneous Natalizumab in Patients with Relapsing Remitting Multiple Sclerosis: Investigation on Efficiency and Savings—The EASIER Study

Massimo Filippi^{1,2}, Luigi Grimaldi³, Antonella Conte^{4,5,6}, Rocco Totaro⁷, Maria Rosaria Valente⁸, Simona Malucchi⁹, Franco Granella¹⁰, Cinzia Cordioli¹¹, Vincenzo Brescia Morra¹², Chiara Zanetta¹, Daria Perini¹³, Laura Santoni¹³; on behalf of the EASIER study working group

¹Neurology Unit, Neurorehabilitation Unit, Neurophysiology Service, and Neuroimaging Research Unit, Division of Neuroscience, IRCCS San Raffaele Scientific Institute, Milan, Italy; ²Vita-Salute San Raffaele University, Milan, Italy; ³Multiple Sclerosis Center, Fondazione Istituto G. Giglio, Cefalù (PA), Italy; ⁴Department of Human Neurosciences, Sapienza, University of Rome, Italy; ⁵Multiple Sclerosis Center Policlinico Umberto I Hospital, Rome, Italy; ⁶IRCCS Neuromed, Pozzilli (IS), Italy; ⁷Demyelinating Disease Center, Department of Neurology, San Salvatore Hospital, L'Aquila, Italy; ⁸Clinical Neurology, Santa Maria della Misericordia University Hospital and Department of Medicine, University of Udine, Udine, Italy; ⁹SCDO Neurologia, S. Luigi Gonzaga University Hospital, Orbassano (TO), Italy; ¹⁰Department of Medicine and Surgery, University Hospital of Parma, Parma, Italy; ¹¹Multiple Sclerosis Center, ASST Spedali Civili di Brescia, Montichiari Hospital (Brescia), Italy; ¹²Multiple Sclerosis Clinical Care and Research Center, Federico II University Hospital—Department of Neuroscience (NSRO), Naples, Italy; ¹³Biogen Italia, Milan, Italy

Corresponding author: Massimo Filippi, filippi.massimo@hsr.it



Online

Online Resource 4. Healthcare professionals time per intravenous administration per center and estimations from the regression model. The dots represent each infusion according to their length and the number of previous infusions performed by the HCP. A slope, which is absent in these graphs, would indicate an association between the time of infusion and the number of previous infusions performed by the HCP.