

Online Resource 1

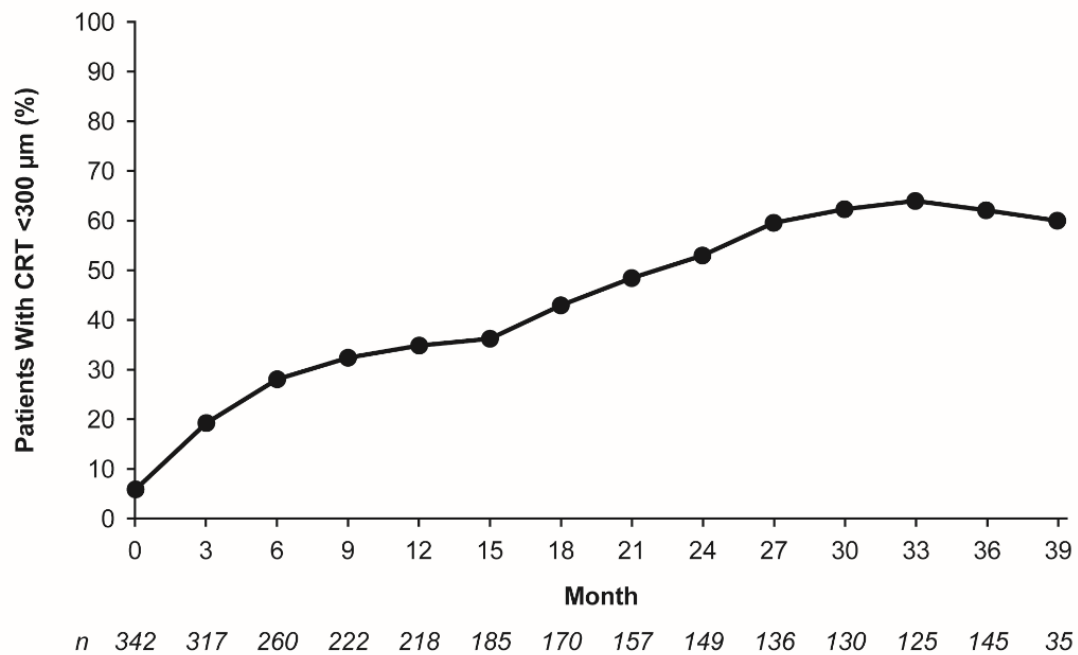


Figure. Percentage of sham-treated patients with CRT <300 μm in the study eye. Analysis is based on observed values with no imputation for missing values. CRT, central retinal thickness.

Yoon YH, Boyer DS, Maturi RK, Bandello F, Belfort Jr R, Augustin AJ, Li X-Y, Bai Z, Hashad Y; Ozurdex MEAD Study Group. Natural history of diabetic macular edema and factors predicting outcomes in sham-treated patients (MEAD study). *Graefe's Archive for Clinical and Experimental Ophthalmology*.

Correspondence: Young Hee Yoon, MD, Asan Medical Center, Seoul, South Korea.
yhyoon@amc.seoul.k