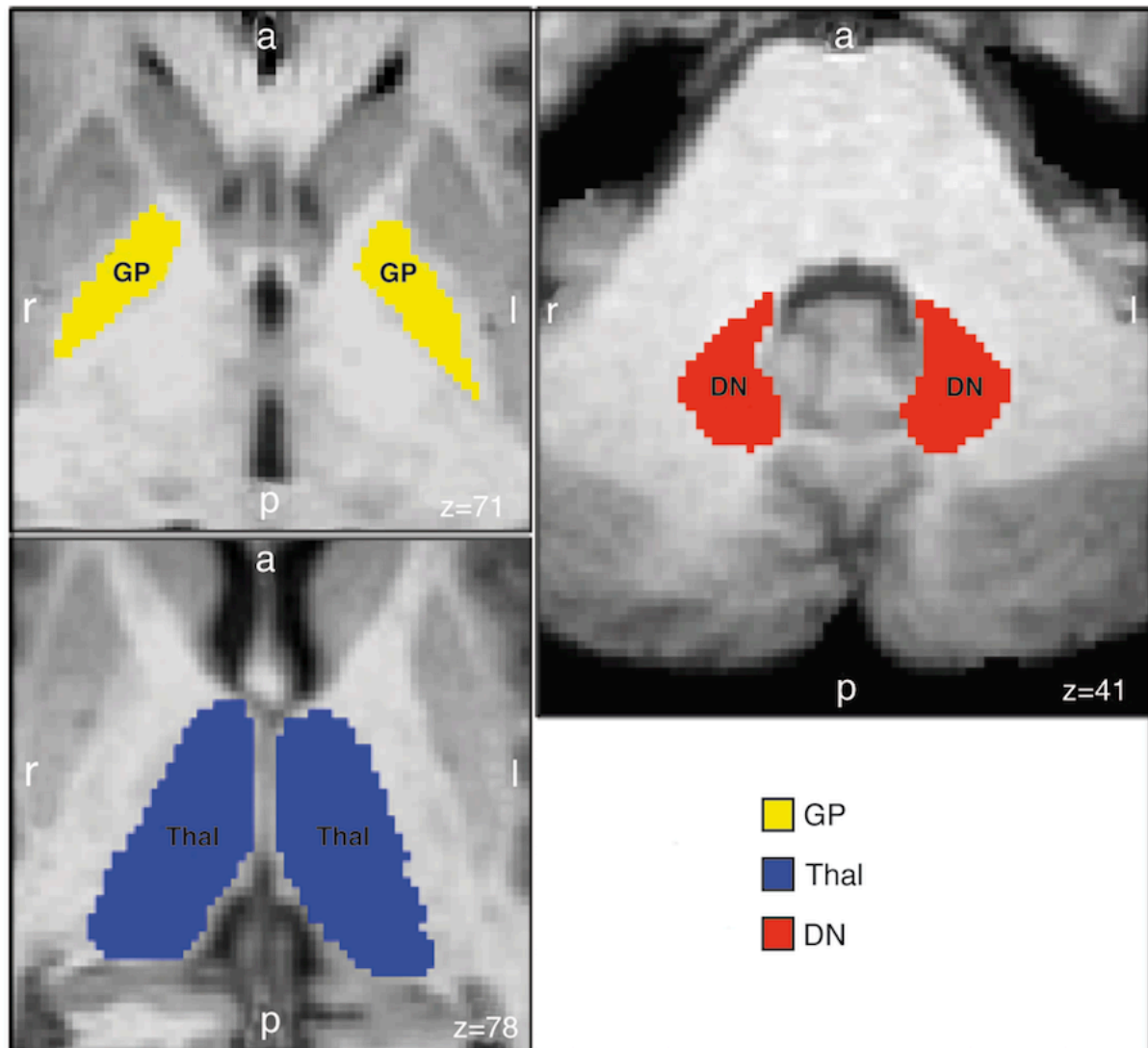


SUPPLEMENTARY MATERIAL

S1 Seed and target mask outline used for tractography

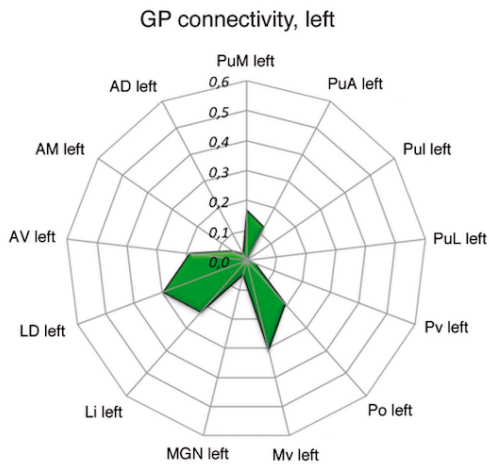
Figure S1: Example of seed and target masks, which were included in the tractography analysis. GP: Globus pallidus (internal and external part); Thal: Thalamus; DN: Dentate nucleus



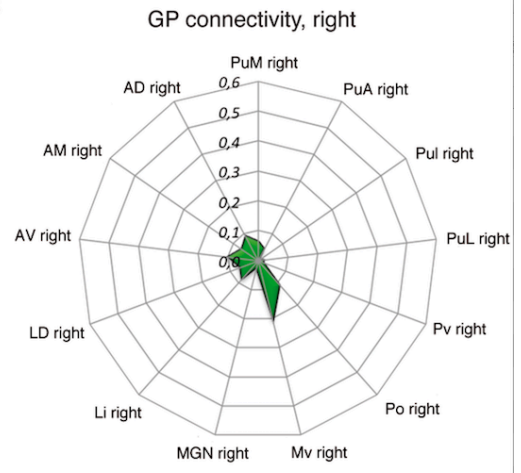
S2 Connectivity fingerprints for pallido-thalamic and cerebello-thalamic projections

Figure 2: Connectional fingerprints for all thalamic projections not revealed in Figure 2. The values indicate the relative connection density for pallidal (in the A, left, and B, right hemisphere) or cerebellar (C, left; B, right) connectivity with thalamic sub-territories (for the connotation of different nuclei, please cf. Krauth et al., 2010, or Table 1).

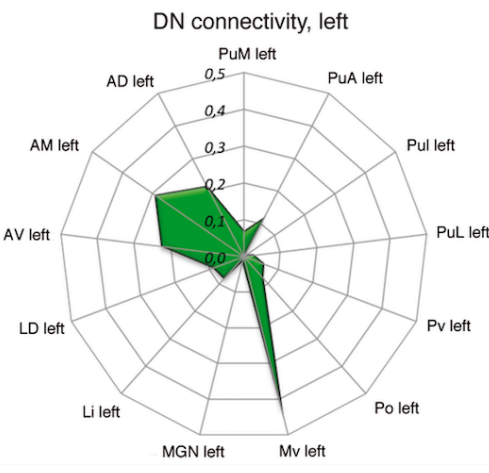
A



B



C



D

