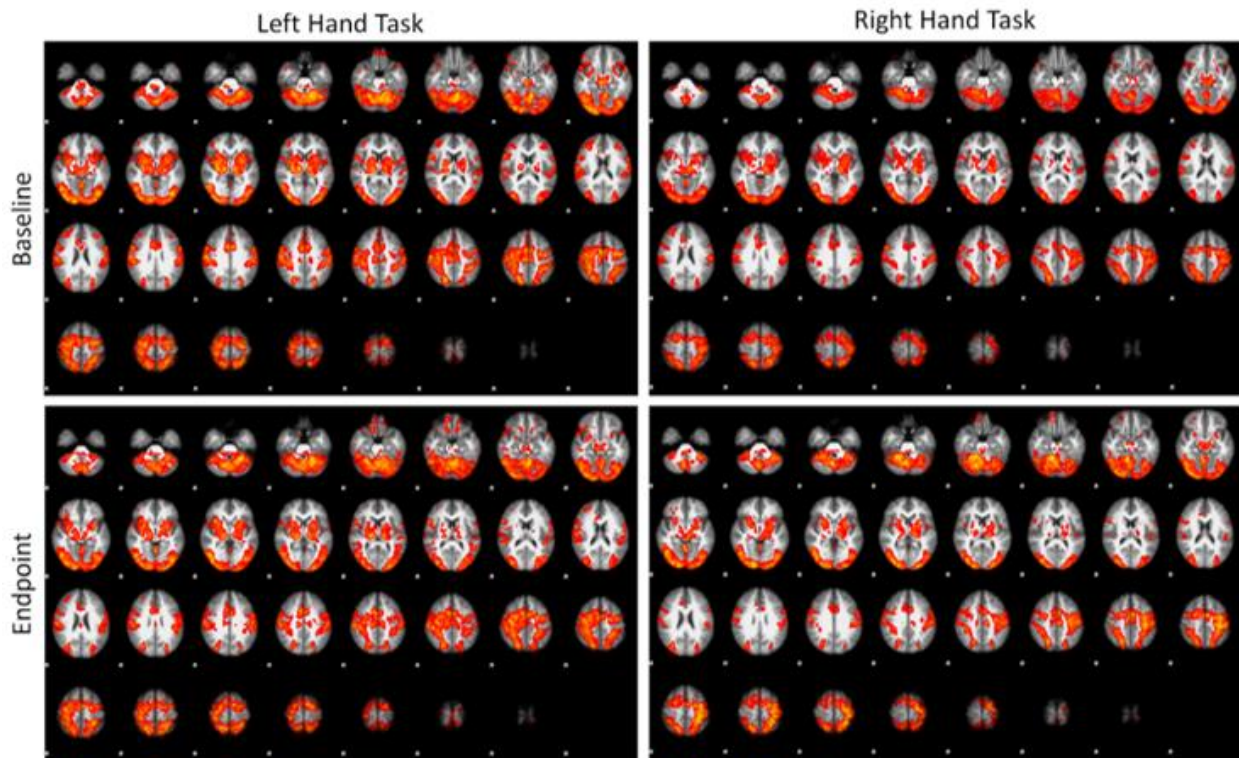
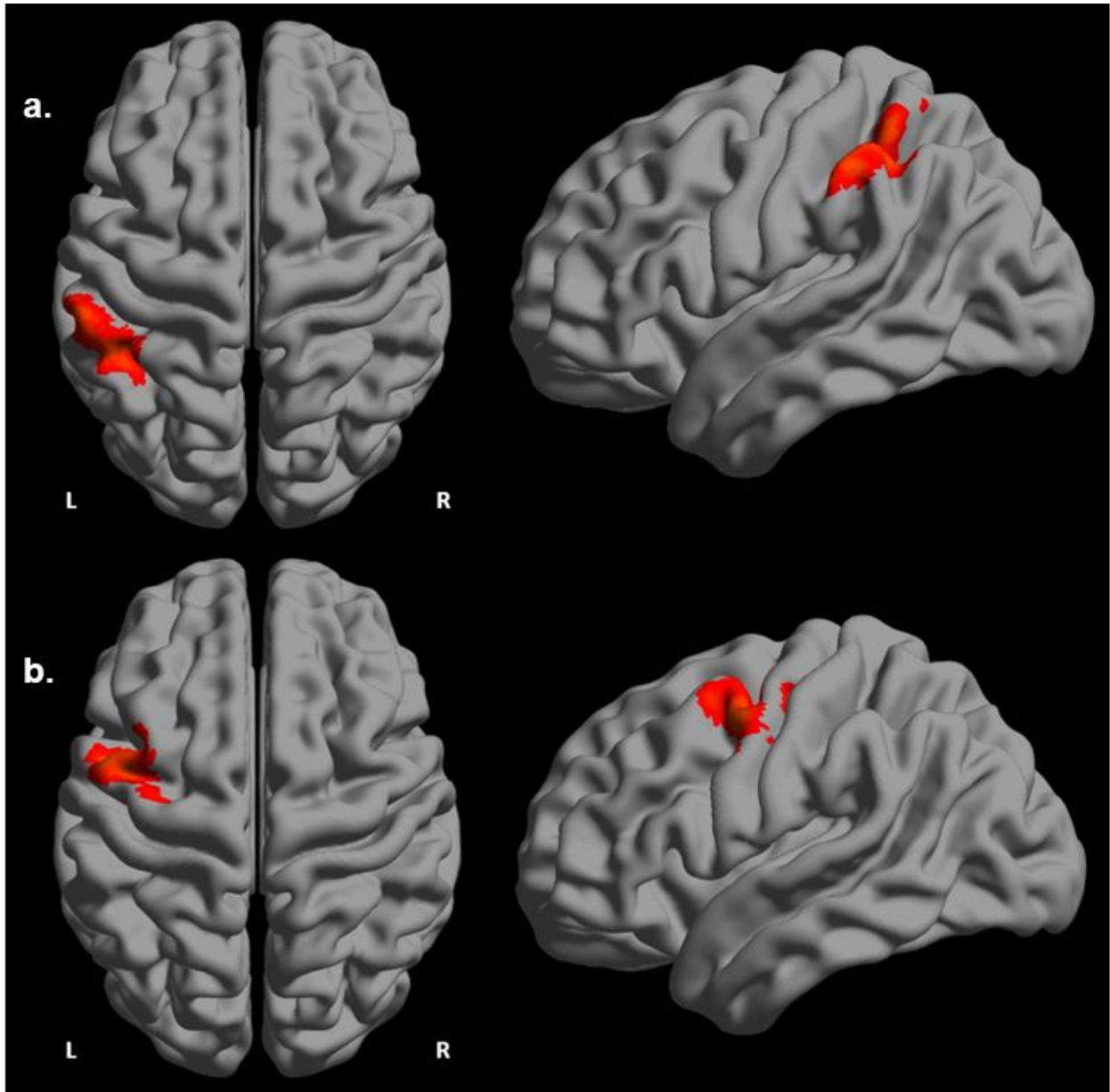


Supplemental Figures

GM analysis:



Supplementary Figure 1: Group level activation for each timepoint for each task condition ($z > 2.5$, $p < 0.05$, two-tailed, FWE).



Supplementary Figure 2: Panel A - Group level difference for Baseline > Endpoint ($p < 0.05$, two-tailed, $z > 3.1$, FWE). Activation decreased in the left inferior parietal lobule for the left hand visuomotor task. Computed using FSL 6.0.0 Glm function using the canonical HRF. Panel B - Group level difference for Baseline > Endpoint ($p < 0.05$, two-tailed, $z > 3.1$, FWE). Activation decreased in the left precentral gyrus for the right hand visuomotor task. Computed using FSL 6.0.0 Glm function using the canonical HRF.