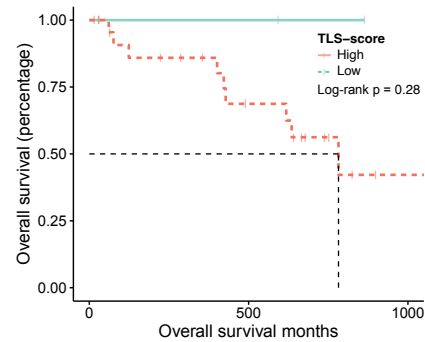


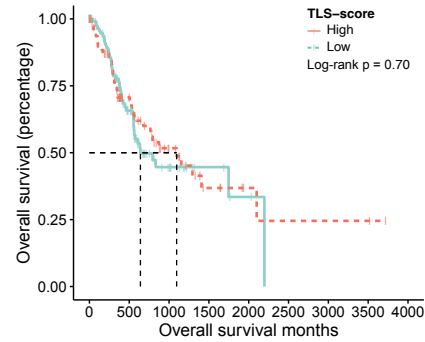
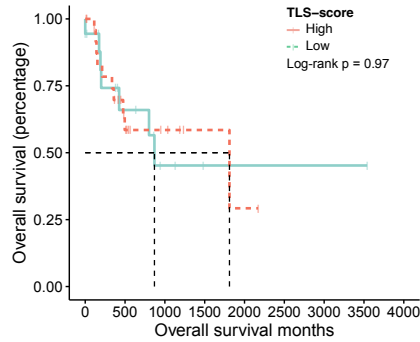
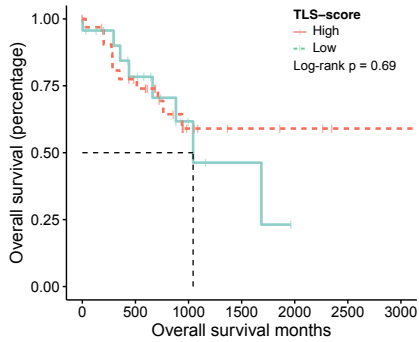
(A)



(B)

Number at risk

Low	2	2	0
High	25	11	1



(C)

(D)

(E)

Number at risk

Low	24	13	4	2	0	0	0
High	36	22	7	4	3	1	1

Number at risk

Low	18	8	3	1	1	1	1	0
High	26	10	5	2	1	0	0	0

Number at risk

Low	123	47	15	5	2	0	0	0	0
High	82	42	19	7	3	2	2	2	0